



## 37 Mountain Boulevard

Warren, New Jersey

### Property Features

- Two office units available for lease in single story office building

**Suite 3/4:** 2,462 Rsf

*(divisible to 1,582 Rsf and 880 Rsf)*

**Suite 5:** 2,100 Rsf

*Units can be combined to 4,562 Rsf*

- Conveniently situated in Warren's business hub, along busy commuter corridor
- Minutes from I-78, I-287, Route 22 & Route 24
- Ideal for medical or office users
- Separate individually metered utilities and private entrances
- Ample parking available
- Call for lease price information

### SPACE AVAILABLE IMMEDIATELY

**Suite 3/4**

2,462 Rsf

**Suite 5**

2,100 Rsf

Call For Lease Price Information



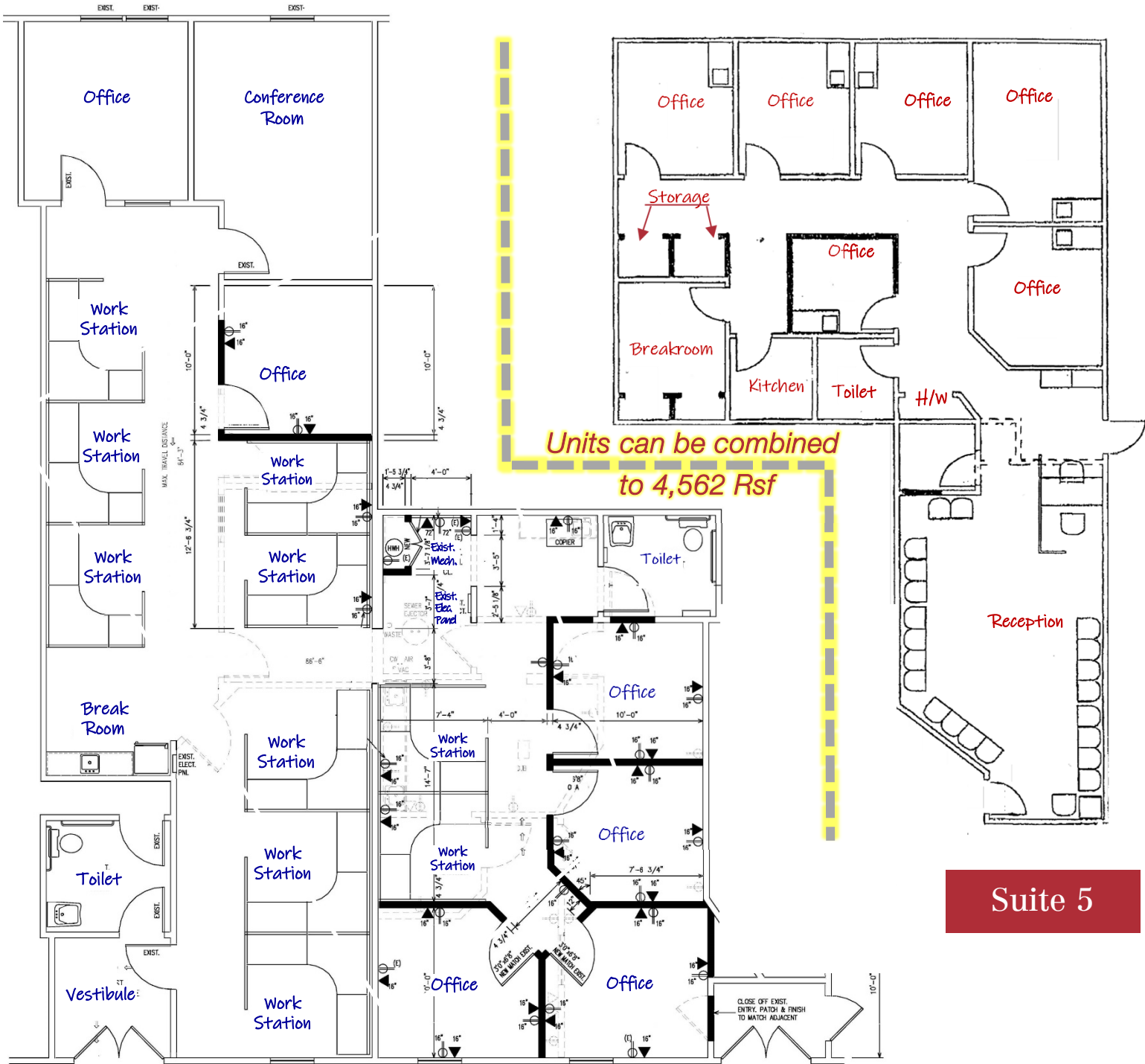
For further information  
please contact Exclusive Broker:

**Marc Shein**  
Senior Vice President

732 985 3000 ext. 212  
mshein@naidb.com

# Office Space For Lease

Suite 3/4



Suite 5

For further information  
please contact Exclusive Broker:

Marc L. Shein  
Senior Vice President

732-985-3000 ext. 212  
mshein@naidb.com

**NAI DiLeo-Bram & Co.**

Commercial Real Estate Services, Worldwide.

90 Woodbridge Center Drive, Suite 160  
Woodbridge, NJ 07095  
732 985 3000 | [naidb.com](http://naidb.com)