

# RETAIL SPACES FOR LEASE



**1370 WASHINGTON AVE**  
**MIAMI BEACH, FLORIDA**

**INHOUSE**  
COMMERCIAL

# PROPERTY OVERVIEW

## ADDRESS

1370 Washington Ave, Miami Beach, Florida

## SIZE

Space A ± 1,620 SF | Space B ± 1,150 SF

## NEIGHBORS

Nofar Method Pilates, Cortadito, Snipes, Miami Ink, Limoncello

## CONDITION

Built-out retail stores

## POSSESSION

Space A: 30 days | Space B: Immediate

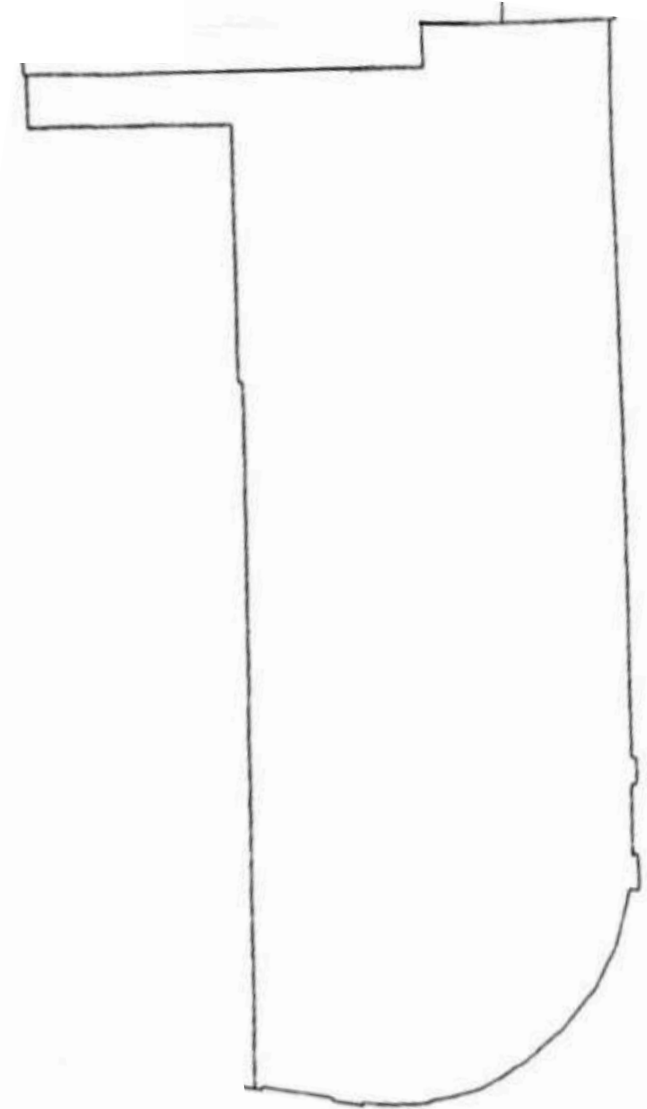
## COMMENTS

- 1370 Washington Ave is located on one of Miami Beach's busiest avenues
- Available spaces include two fully built out retail stores



# SPACE A

- ADDRESS** 1364 Washington Avenue
- SIZE** ± 1,620 SF
- STATUS** Currently House of Intuition
- CONDITION** Prime corner retail space

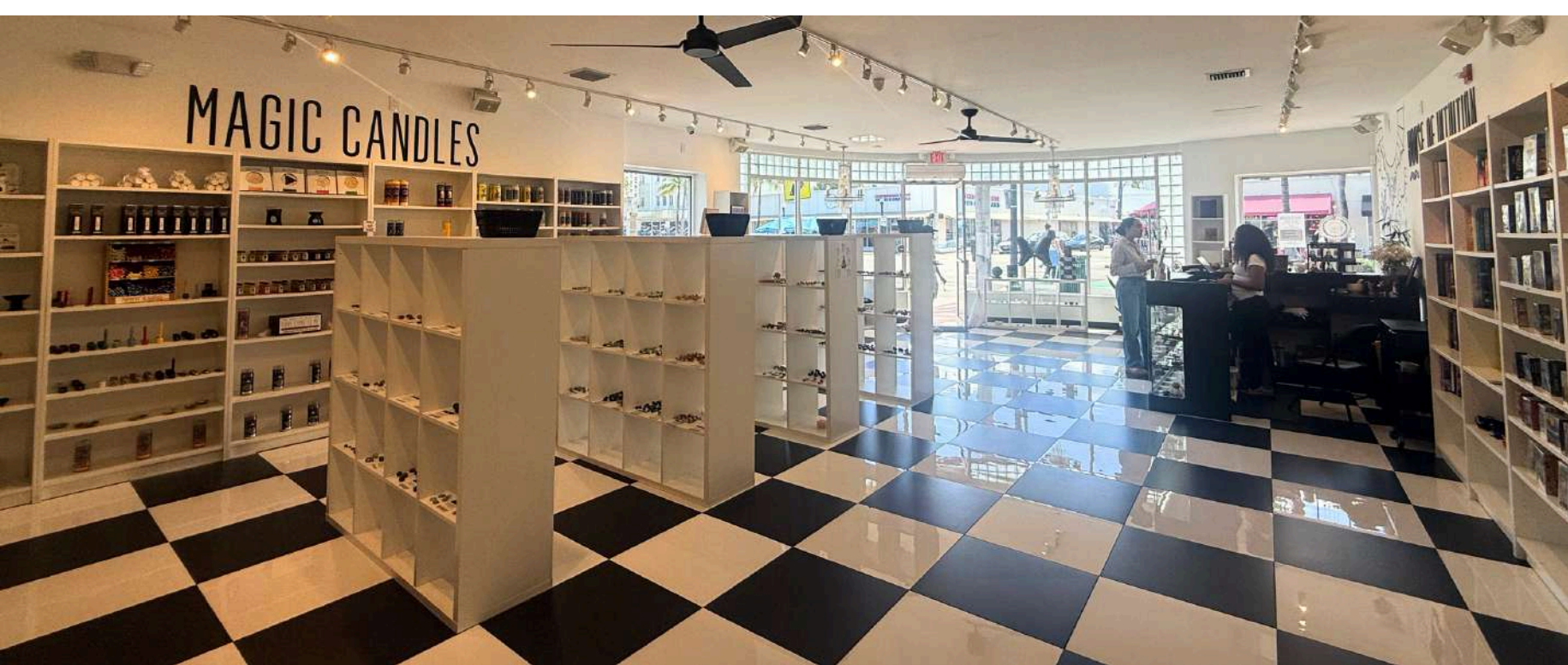


14TH STREET

WASHINGTON AVE



SPACE A INTERIOR



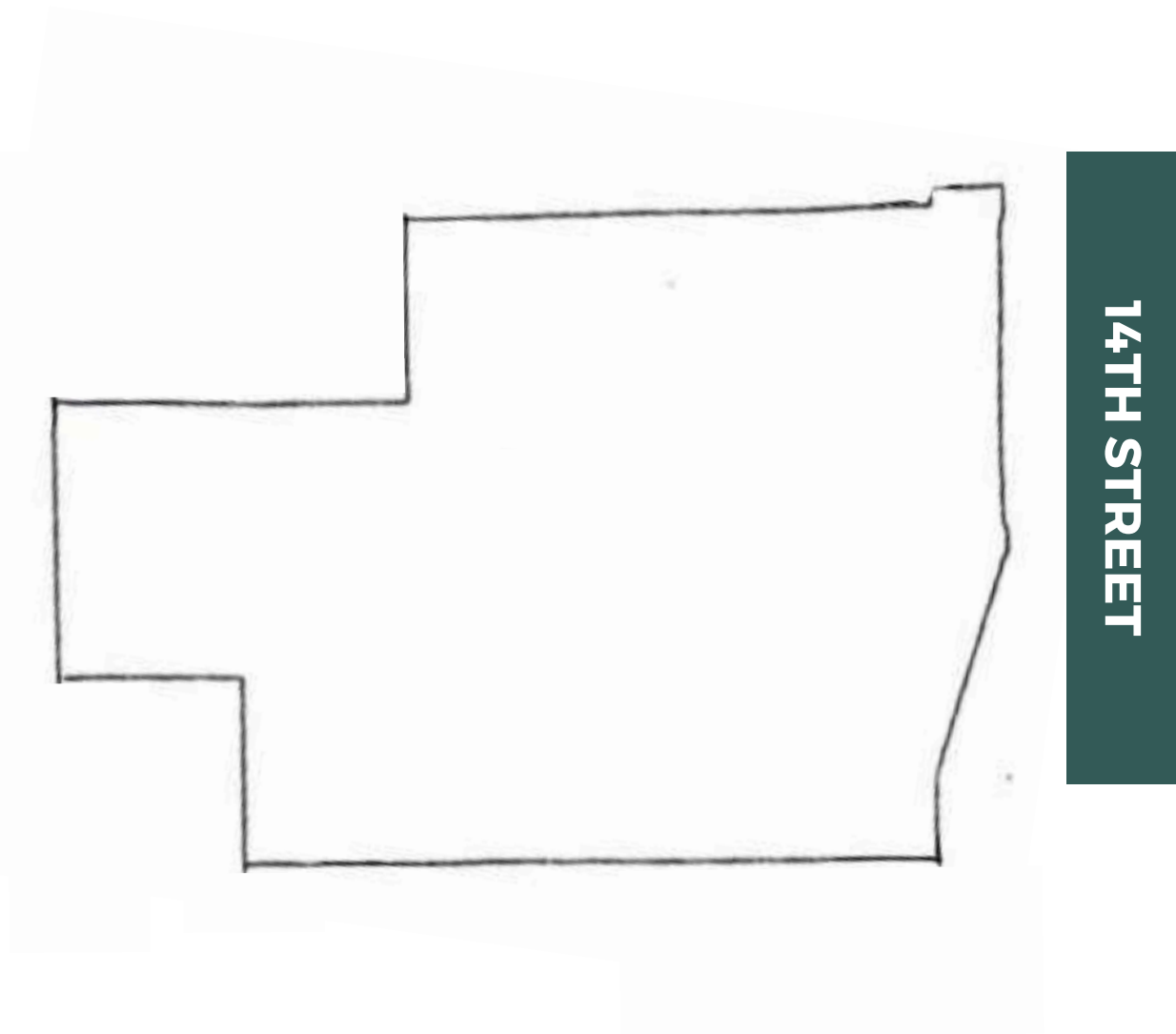
# SPACE B

**ADDRESS** 402 14<sup>th</sup> Street

**SIZE** ± 1,150 SF

**STATUS** Previously Bikini Brasil

**CONDITION** Fully built-out retail space





# WASHINGTON AVENUE

Miami Beach's Washington Avenue is a vibrant and dynamic street that blends unique local culture with global influences. Stretching from 5th to 17th Streets in South Beach, it serves as a hub for boutique shopping, dining, and entertainment. Washington Avenue offers a mix of independent stores, such as Snipes, La Sandwicherie, Cortadito,

## NEIGHBORING TENANTS

NOFAR  
METHOD

Cortadito  
COFFEE HOUSE

snipes

Limoncello  
MIAMI

Miami Ink



# SURROUNDING NEIGHBORHOODS



FOR MORE INFORMATION, PLEASE CALL

**305.376.7802**

---

**JARED ROBINS**

JARED@INHOUSECRE.COM

**NICOLE ROEDERER**

NICOLE@INHOUSECRE.COM

**RAVIV GAILOR**

RAVIV@INHOUSECRE.COM

**INHOUSE**  
COMMERCIAL

MARKETING PROCESS In The investment opportunity is offered on an "as-is, where-is" basis without any representation or warranty and only to select investors registered through an executed Confidentiality Agreement. Preference will be given to those investment offers that reflect the most comprehensive underwriting and the fewest or no due diligence requirements or other conditions to close. Investors should be prepared to disclose their sources of funds and any approval process necessary to close the transaction. COMMUNICATION All communications, inquiries and requests should be addressed directly to INHOUSE COMMERCIAL. In no event shall Prospective Purchasers contact any employee, consultant, or tenant with regards to the offering, without the prior express written consent of the Owner or INHOUSE COMMERCIAL. Any unauthorized contact will result in the Prospective Purchaser being disqualified from consideration to purchase the Property. TRANSACTION COSTS Each Prospective Purchaser shall be responsible for any and all costs, expenses (including legal fees) associated with their inspection and due diligence efforts pertaining to the Property Documents provided upon request.