

# 555

# WEST 25TH STREET

BETWEEN TENTH AND ELEVENTH AVENUES

  
**CURRENT**

GALLERY HENOCH

555

dna



# BUILDING OVERVIEW

- Tenant controlled HVAC
- Private keyed elevator entry/video security system
- On-site super
- 400 AMPS per floor
- 12' Ceiling heights



# 555 WEST 25TH STREET

Partial 3rd Floor

## SIZE

2,214 RSF

## ASKING RENT

\$8k/month

## POSSESSION

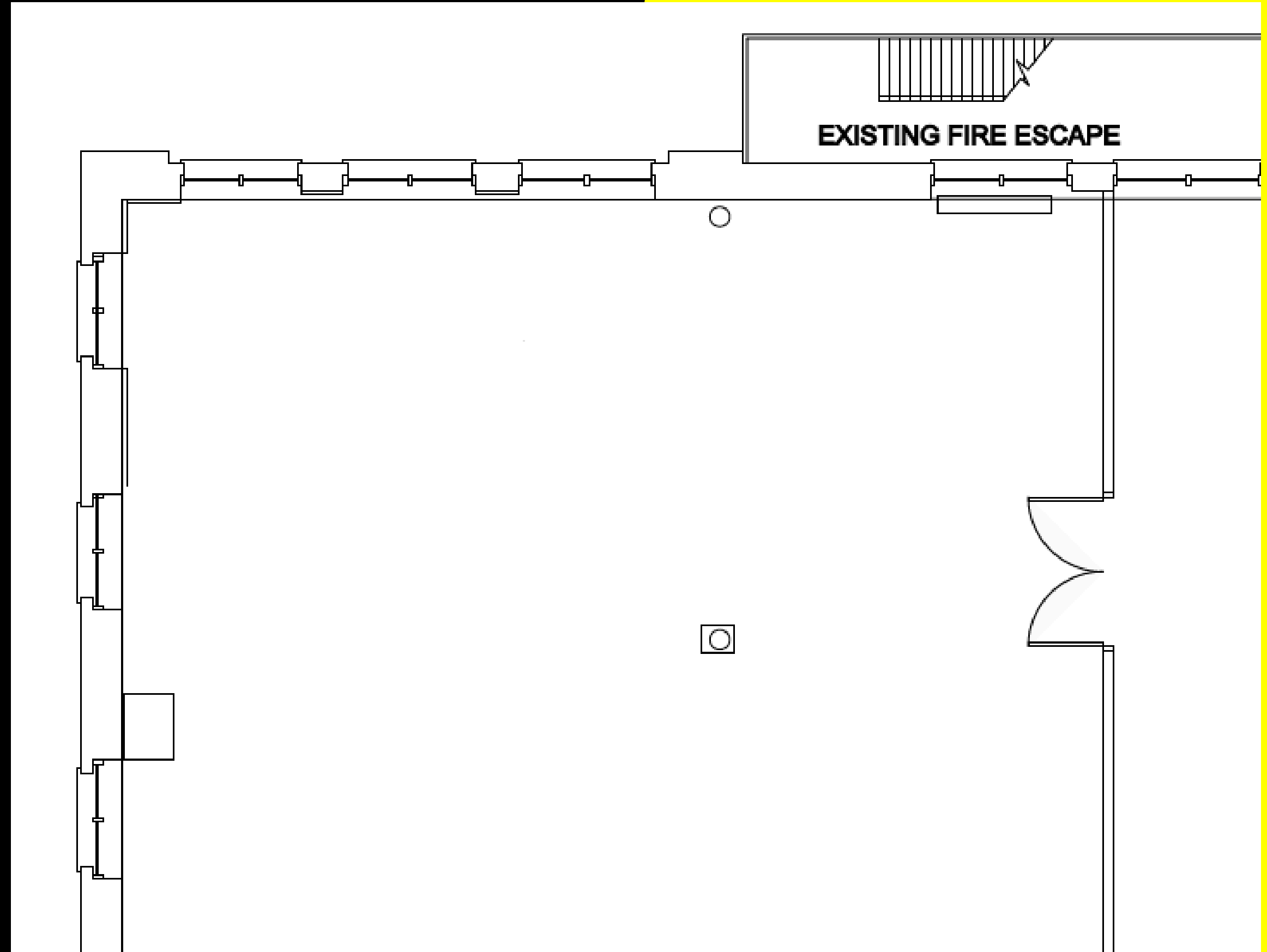
Immediate

## TERM

Negotiable

## HIGHLIGHTS

- Corner space with 6 windows
- Open loft space
- Landlord can build to suit





# CONTACT

MICHAEL SEGERMAN

[msegerman@currentadvisors.com](mailto:msegerman@currentadvisors.com)

516.297.3337

**CURRENT**  
Real Estate Advisors