



# 1050 Fulton Avenue

SACRAMENTO, CA

---

## Available Space: Up to $\pm 9,789$ RSF contiguous

Suite 212, 213,  
230 & 235 (div)  $\pm 9,301$  RSF

Suite 215 (div)  $\pm 4,654$  RSF

---

## Features

- Asking Rent: \$1.75/RSF, FSG
- Mature garden office park setting
- Prominent monument signage available
- Close to high-end restaurants, banking & shopping
- Plentiful above-standard free parking (up to 6/1,000 RSF)
- Flexible floorplans
- Negotiable tenant improvements

---

*For information, please contact:*

### Rich Ellsworth

*Senior Managing Director*

t 916-569-2343

rich.ellsworth@nmrk.com

[nmrk.com](http://nmrk.com)

**NEWMARK**

# 1050 Fulton Avenue

SACRAMENTO, CA

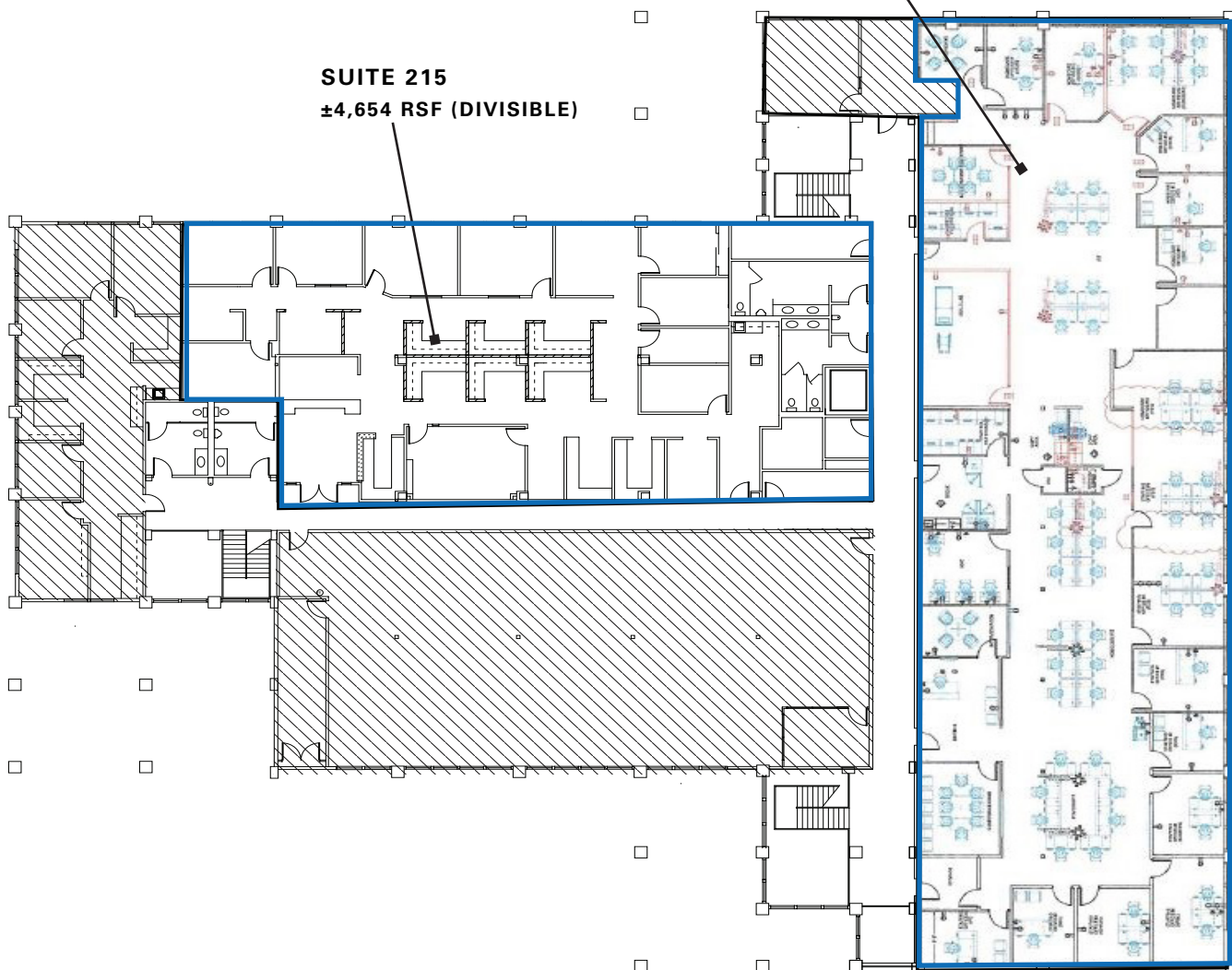
## Floor Plan | Second Floor

SUITE 212, 213, 230 & 235

±9,301 RSF (DIVISIBLE)

SUITE 215

±4,654 RSF (DIVISIBLE)



For information, please contact:

**Rich Ellsworth**

Senior Managing Director

t 916-569-2343

rich.ellsworth@nmrk.com

[nmrk.com](http://nmrk.com)

**NEWMARK**

# 1050 Fulton Avenue

SACRAMENTO, CA

## Property Photos



*For information, please contact:*

**Rich Ellsworth**

*Senior Managing Director*

t 916-569-2343

rich.ellsworth@nmrk.com

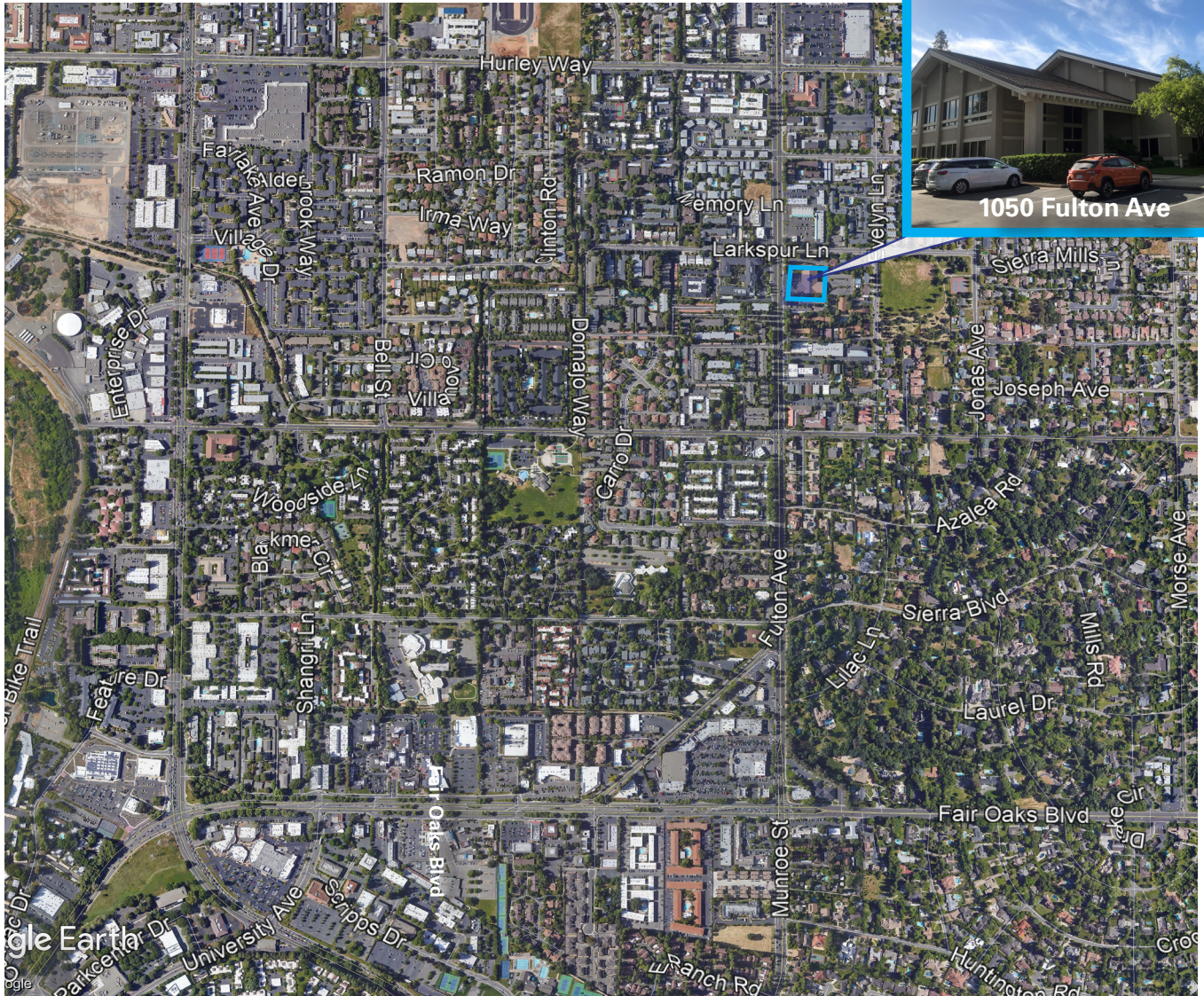
[nmrk.com](http://nmrk.com)

**NEWMARK**

# 1050 Fulton Avenue

SACRAMENTO, CA

## Aerial Map



For information, please contact:

### Rich Ellsworth

Senior Managing Director

t 916-569-2343

rich.ellsworth@nrmk.com

[nrmk.com](http://nrmk.com)

**NEWMARK**

The distributor of this communication is performing acts for which a real estate license is required. The information contained herein has been obtained from sources deemed reliable but has not been verified and no guarantee, warranty or representation, either express or implied, is made with respect to such information. Terms of sale or lease and availability are subject to change or withdrawal without notice.  
08-1285 12-24