

25 CENTRAL PARK WEST

Northwest Corner of Central Park West and West 62nd Street | New York, NY 10023

RETAIL/MEDICAL
CONDO FOR LEASE

1,485 SF± & 3,200 SF± CORNER RETAIL/MEDICAL SPACES AVAILABLE



BROKER CONTACT

ZACH LANDES

914-237-3400, Ext. 123

Zach@RoyalPropertiesInc.com



25 CENTRAL PARK WEST

Northwest Corner of Central Park West and West 62nd Street | New York, NY 10023

RETAIL/MEDICAL
CONDO FOR LEASE

1,485 SF± & 3,200 SF± CORNER RETAIL/MEDICAL SPACES AVAILABLE



AVAILABLE:

3,200 SF± Street Level Plus 2,150 SF± Basement
1,485 SF± Street Level Plus 800 SF± Basement

NEIGHBORING BUSINESSES:

Whole Foods, Target, Chase, West Elm, Bloch, Lincoln Center, Mount Sinai, Starbucks, Amorino, Rosa Mexicano, Sephora, TD Bank, Summit Health, New York Institute of Technology, The Smith, and many more

PEDESTRIAN/TRAFFIC COUNTS:

13,000± Pedestrians per Day Along Columbus Circle
13,202 Cars per Day Along Central Park West

ADDITIONAL INFORMATION:

- Situated at the Base of The Century Condominiums, a 621,304 SF 422 Unit Luxury Building on a 1.26 Acre Lot
- 135' Wraparound Frontage & 10' Ceiling Heights
- Close Proximity to Central Park (42M Annual Visitors)
- 6 Minute Walk to Columbus Circle (62M Annual Visitors)
- Affluent Residential Demographic
- Population of 70,697 (2020 Census) in the Upper West Side Lincoln Square Area from W. 59th Street to W. 74th Street

RENT:

Call For Details

BROKER CONTACT

ZACH LANDES

914-237-3400, Ext. 123

Zach@RoyalPropertiesInc.com

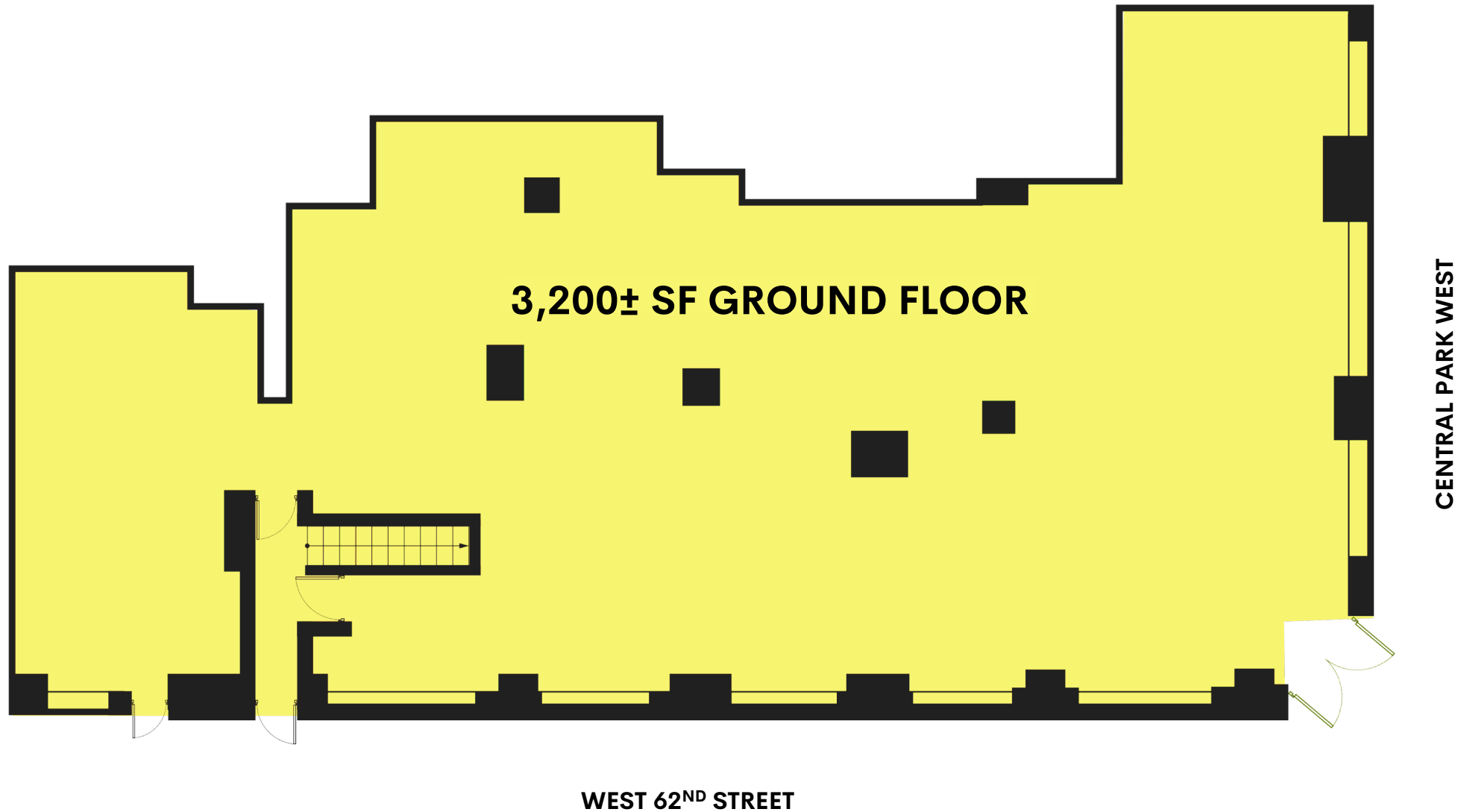
ROYAL
PROPERTIES

25 CENTRAL PARK WEST

Northwest Corner of Central Park West and West 62nd Street | New York, NY 10023

RETAIL/MEDICAL
CONDO FOR LEASE

3,200 SF± CORNER RETAIL/MEDICAL SPACE AVAILABLE



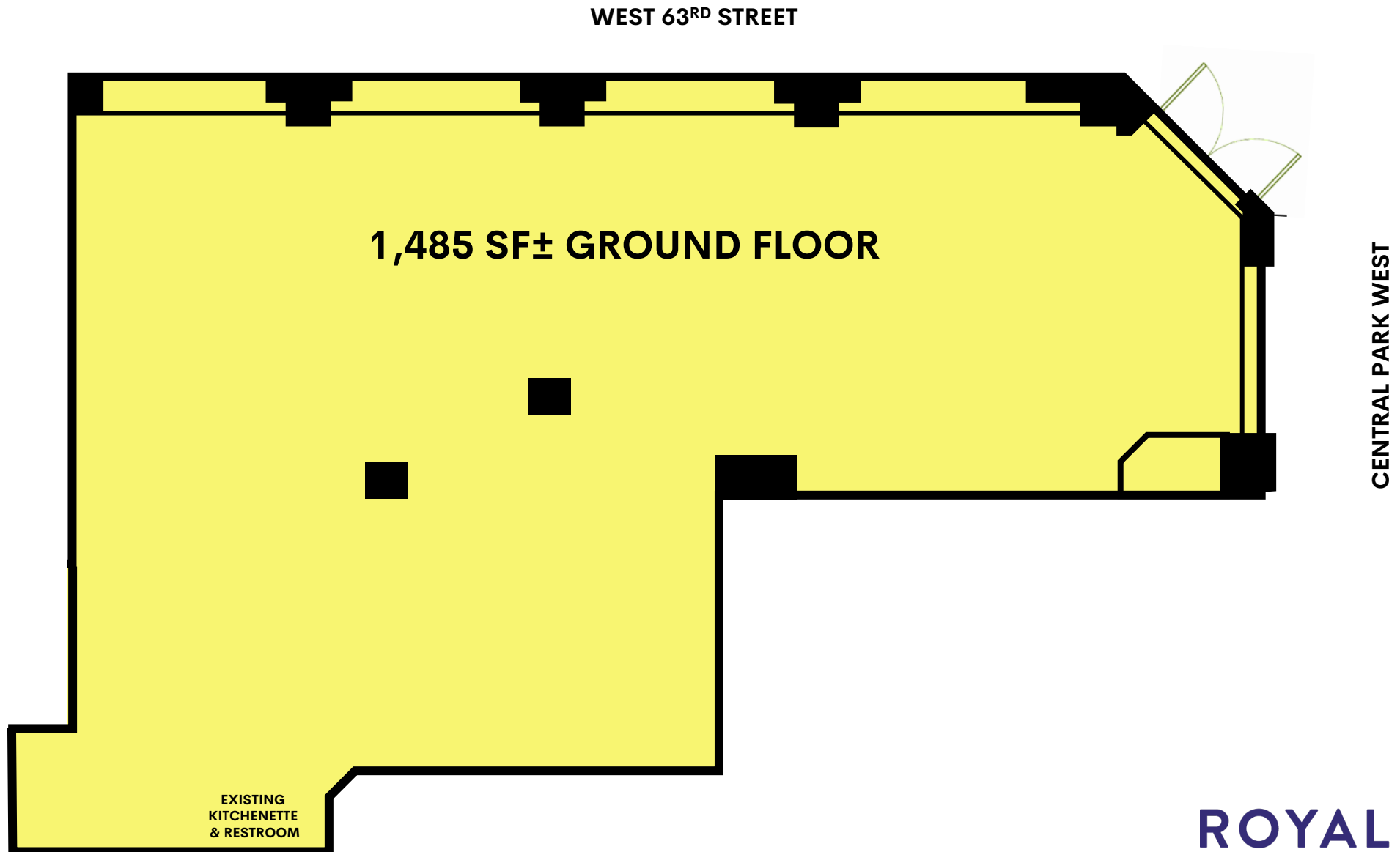
ROYAL
PROPERTIES

25 CENTRAL PARK WEST

Northwest Corner of Central Park West and West 62nd Street | New York, NY 10023

RETAIL/MEDICAL
CONDO FOR LEASE

1,485 SF± 2ND GEN HAIR SALON SPACE AVAILABLE



ROYAL
PROPERTIES

25 CENTRAL PARK WEST

Northwest Corner of Central Park West and West 62nd Street | New York, NY 10023

RETAIL/MEDICAL
CONDO FOR LEASE

1,485 SF± & 3,200 SF± CORNER RETAIL/MEDICAL SPACES AVAILABLE

INTERIOR RENDERINGS



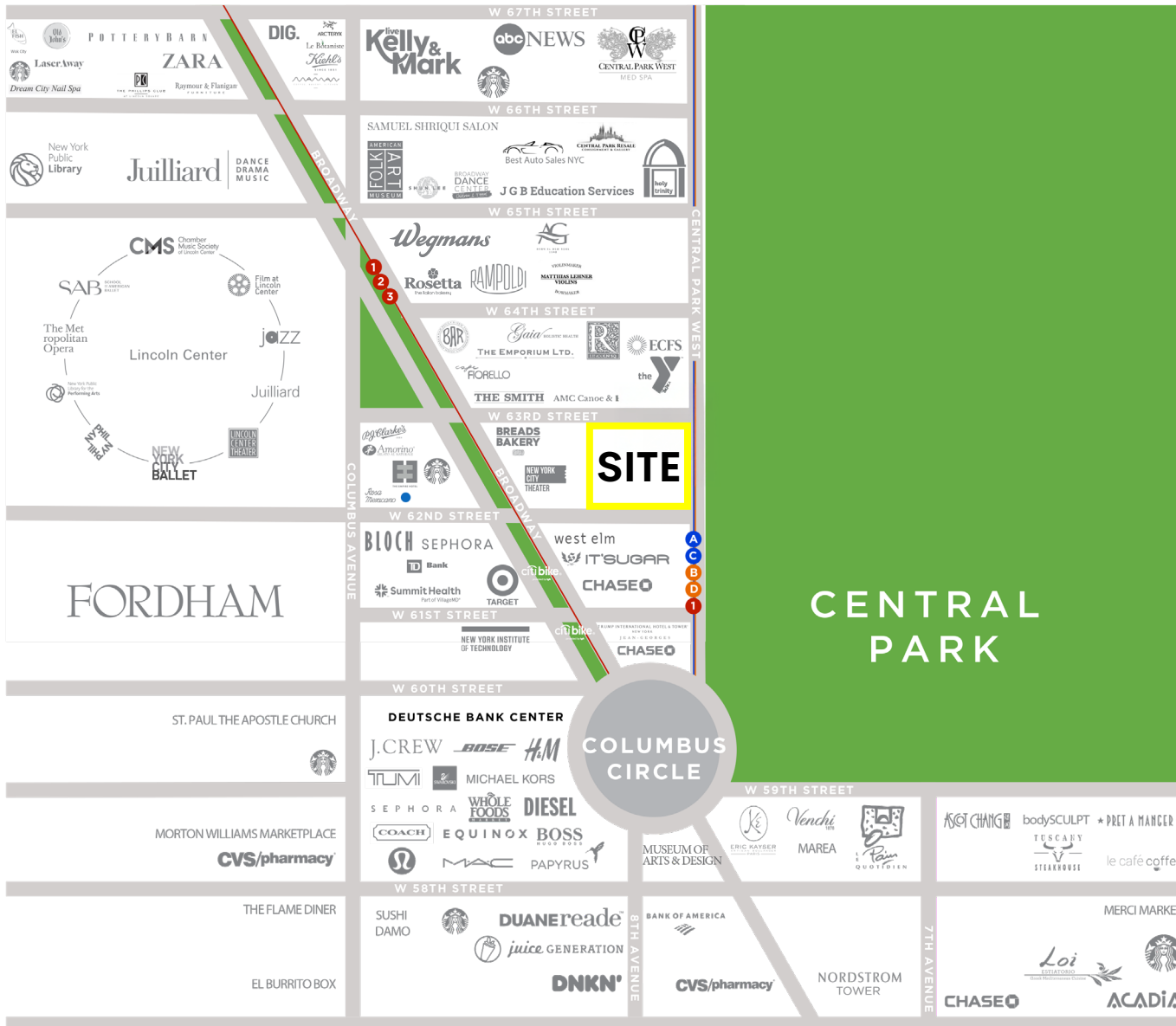
ROYAL
PROPERTIES

25 CENTRAL PARK WEST

Northwest Corner of Central Park West and West 62nd Street | New York, NY 10023

RETAIL/MEDICAL
CONDO FOR LEASE

1,485 SF± & 3,200 SF± CORNER RETAIL/MEDICAL SPACES AVAILABLE



CENTRAL PARK
MANHATTAN, NEW YORK

42M
ANNUAL VISITORS

COLUMBUS CIRCLE
59TH STREET & BROADWAY

6MIN
WALK

59TH STREET STATION
COLUMBUS CIRCLE – SERVING LINES

16M
ANNUAL RIDERSHIP

ROYAL
PROPERTIES

25 CENTRAL PARK WEST

Northwest Corner of Central Park West and West 62nd Street | New York, NY 10023

RETAIL/MEDICAL
CONDO FOR LEASE

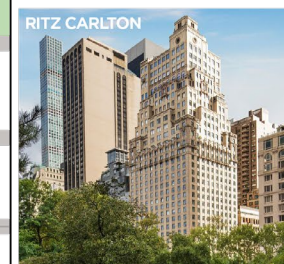
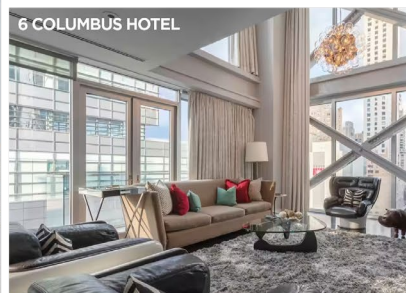
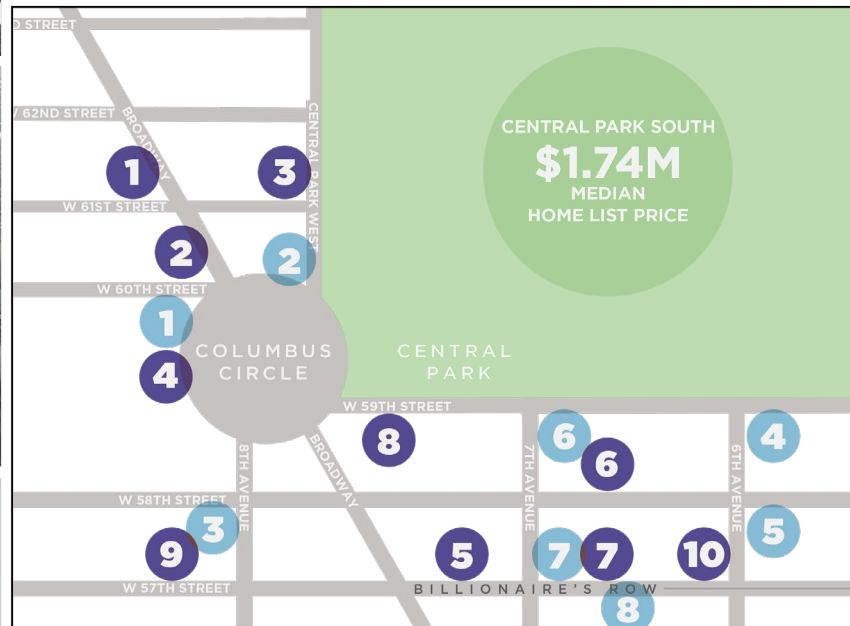
1,485 SF± & 3,200 SF± CORNER RETAIL/MEDICAL SPACES AVAILABLE

RESIDENCES

1. THE PARK LOGGIA
2. ANAGRAM COLUMBUS CIRCLE
3. 15 CENTRAL PARK WEST
4. ONE CENTRAL PARK CONDOMINIUMS
5. CENTRAL PARK TOWER
6. LAUREN BERGER COLLECTION
7. ONE57
8. 220 CENTRAL PARK SOUTH
9. PARK TOWER SOUTH
10. 111 WEST 57TH STREET

HOTELS

1. MANDARIN ORIENTAL
2. TRUMP TOWER & HOTEL
3. 6 COLUMBUS HOTEL
4. RITZ CARLTON
5. 1 CENTRAL PARK HOTEL
6. JW MARRIOTT ESSEX HOUSE
7. PARK HYATT NEW YORK
8. LE MERIDIAN



ROYAL
PROPERTIES