

**CONSTRUCTION NOTES**

1. WORK SHALL CONFORM TO ALL APPLICABLE CODES AND ORDINANCES.
2. DO NOT SCALE THE DRAWINGS.
3. CALL ANY AND ALL DISCREPANCIES OR OMISSIONS IN DIMENSIONS TO THE ATTENTION OF THE OWNER AND ARCHITECT PRIOR TO COMMENCING WORK.
4. NOMINAL DIMENSIONS SHOWN: WALLS TO ALIGN W/ WINDOW OPENINGS WHERE OCCURS.
5. INTERIOR PARTITIONS TO BE AS SCHEDULED. SUB-FLOOR TO UNDERSIDE OF TRUSSES, TYPICAL. CALLA BOTH SIDES OF BOTTOM PLATE. PROVIDE 5/8" DRYWALL ON "SOUNDBOARD" @ LOCATIONS SPECIFIED BY OWNER, INCLUDING BATHROOMS. DRYWALL TO EXTEND FROM SUBFLOOR TO UNDERSIDE OF TRUSSES IN ALL CASES. CLOSETS TO HAVE DRYWALL CEILINGS @ UNDERSIDE OF TRUSSES.

**HARDWARE SCHEDULE**

NUMBER	DESCRIPTION
HW #1	LOOKSET KEYS TO BUILDING MASTER
HW #2	PASSAGE SET
HW #3	PRIVACY LOCK
HW #4	DUMMY KNOBS & MAGNETIC CATCH
HW #5	CARD READER EQUIPPED

**BUILDING ENTRY DOORS**

NUMBER	SIZE	HARDWARE SET
D-35	EXIST.	HW SET #5 MASTER #1
D-36	EXIST.	HW SET #5 MASTER #1
D-37	EXIST.	HW SET #5 MASTER #1
D-38	EXIST.	HW SET #5 MASTER #2

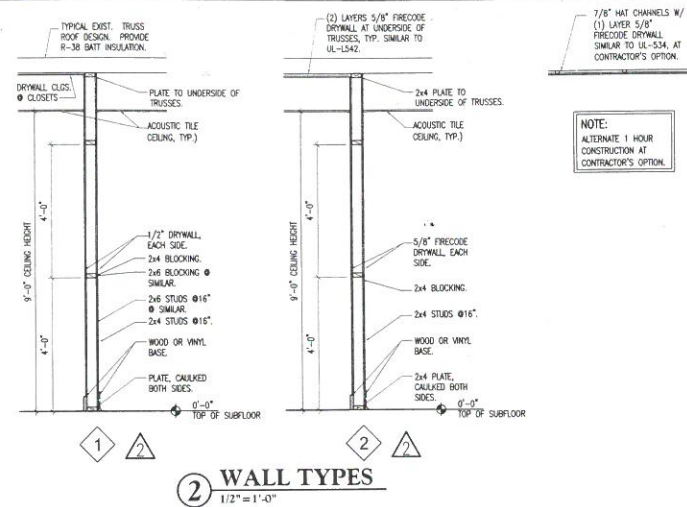
NOTE: ALL SOW CORRIDOR DOORS TO HAVE 20 MINUTE UL RATING

**INTERIOR DOOR SCHEDULE**

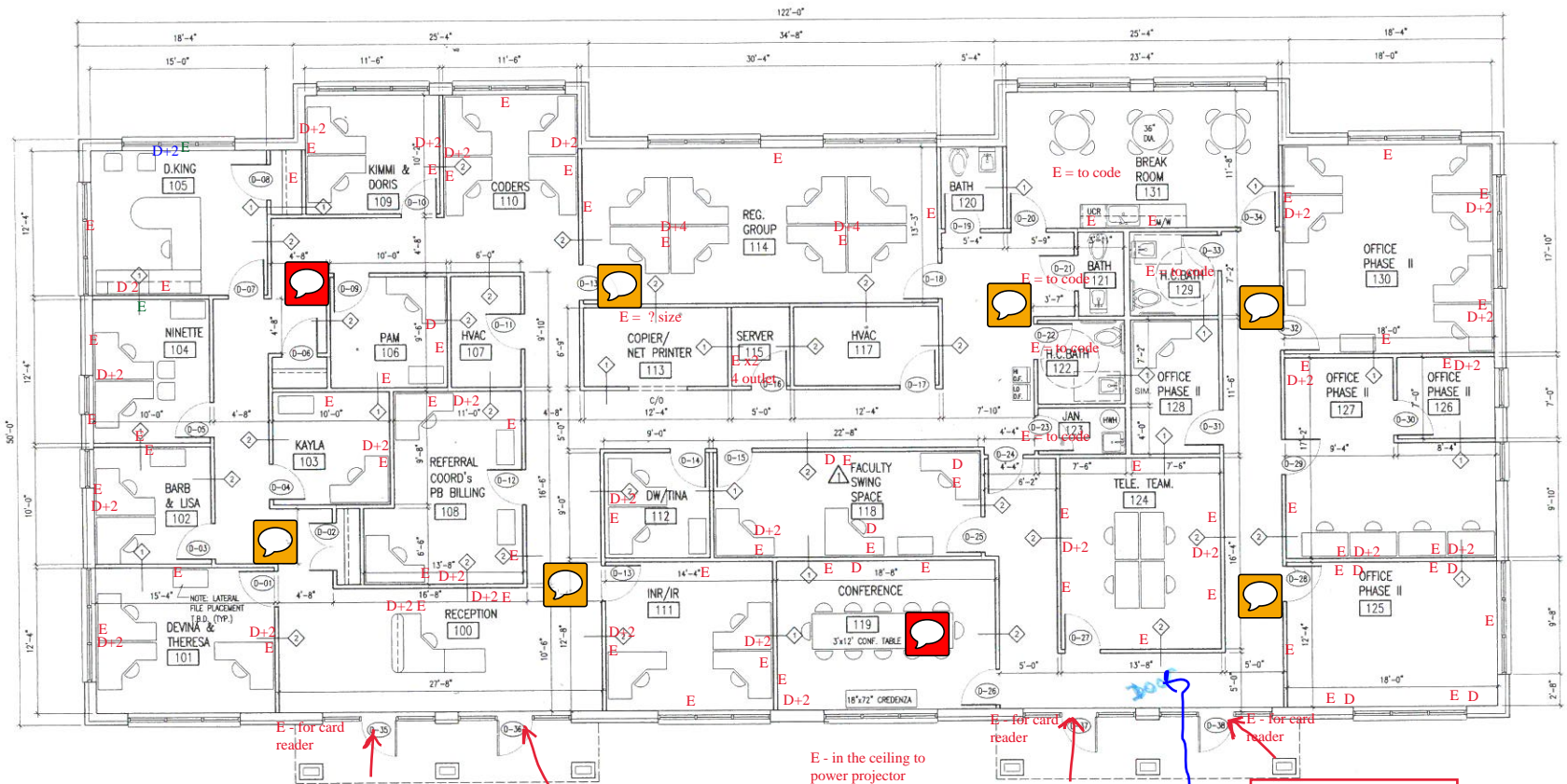
NUMBER	SIZE	HARDWARE SET
D-01	36"x80"	HW SET #2
D-02	PR. 24"x80"	HW SET #4
D-03	36"x80"	HW SET #2
D-04	36"x80"	HW SET #2
D-05	36"x80"	HW SET #2
D-06	36"x80"	HW SET #2
D-07	36"x80"	HW SET #1
D-08	36"x80"	HW SET #2
D-09	36"x80"	HW SET #2
D-10	36"x80"	HW SET #2
D-11	36"x80"	HW SET #2
D-12	36"x80"	HW SET #2
D-13	36"x80"	HW SET #2
D-14	36"x80"	HW SET #2
D-15	36"x80"	HW SET #5
D-16	36"x80"	HW SET #2
D-17	36"x80"	HW SET #2

**INTERIOR DOOR SCHEDULE**

NUMBER	SIZE	HARDWARE SET
D-18	36"x80"	HW SET #2
D-19	36"x80"	HW SET #3
D-20	36"x80"	HW SET #5
D-21	36"x80"	HW SET #3
D-22	36"x80"	HW SET #3
D-23	36"x80"	HW SET #3
D-24	36"x80"	HW SET #5
D-25	36"x80"	HW SET #2
D-26	36"x80"	HW SET #2
D-27	36"x80"	HW SET #2
D-28	36"x80"	HW SET #2
D-29	36"x80"	HW SET #2
D-30	36"x80"	HW SET #2
D-31	36"x80"	HW SET #2
D-32	36"x80"	HW SET #2
D-33	36"x80"	HW SET #3
D-34	36"x80"	HW SET #2



D = Data  
 D x2 = Two Data Line  
 E = Electrical Outlet



**MAIN DOOR - w/ card reader**

**Locked at all times**

**DOOR - with card reader**

**Interior door with key lock**

**Main door for Suite 4 - with key lock**

**1 SECOND FLOOR PLAN**  
 3/16" = 1'-0"