



For Sublease

4725 W Sand Lake Road
Orlando, FL 32819

1,909 & 22,798 SF (entire floor)

 **JLL** SEE A BRIGHTER WAY

4725 W SAND LAKE ROAD



67,671 s.f.
Building Size



1,909 - 22,798 s.f.
Available



I-4 and Turnpike
Easily Accessed



2007
Year Built



24-Hour
Controlled Access



Class A
Building



4.00/1,000 ratio
Free Surface Parking



Tourist Corridor
Submarket



4725 W Sand Lake Road is a 67,671 s.f. office building located in Orlando, Florida at the corner of Kingspointe and Sand Lake Road. It is ideally located less than 2.5 miles from Interstate 4, Florida's Turnpike, Kirkman Road, John Young Parkway and South Orange Blossom Trail making it easily accessible for commuters and clients alike. There are an abundance of high-class surrounding amenities situating the building in an attractive area. Not to mention, the owner may consider offering new building naming rights to a new tenant dependant on the occupancy size and term.

Downtown Orlando



4725 W SAND LAKE ROAD



1,909 s.f.
Suite 110 | Ground level



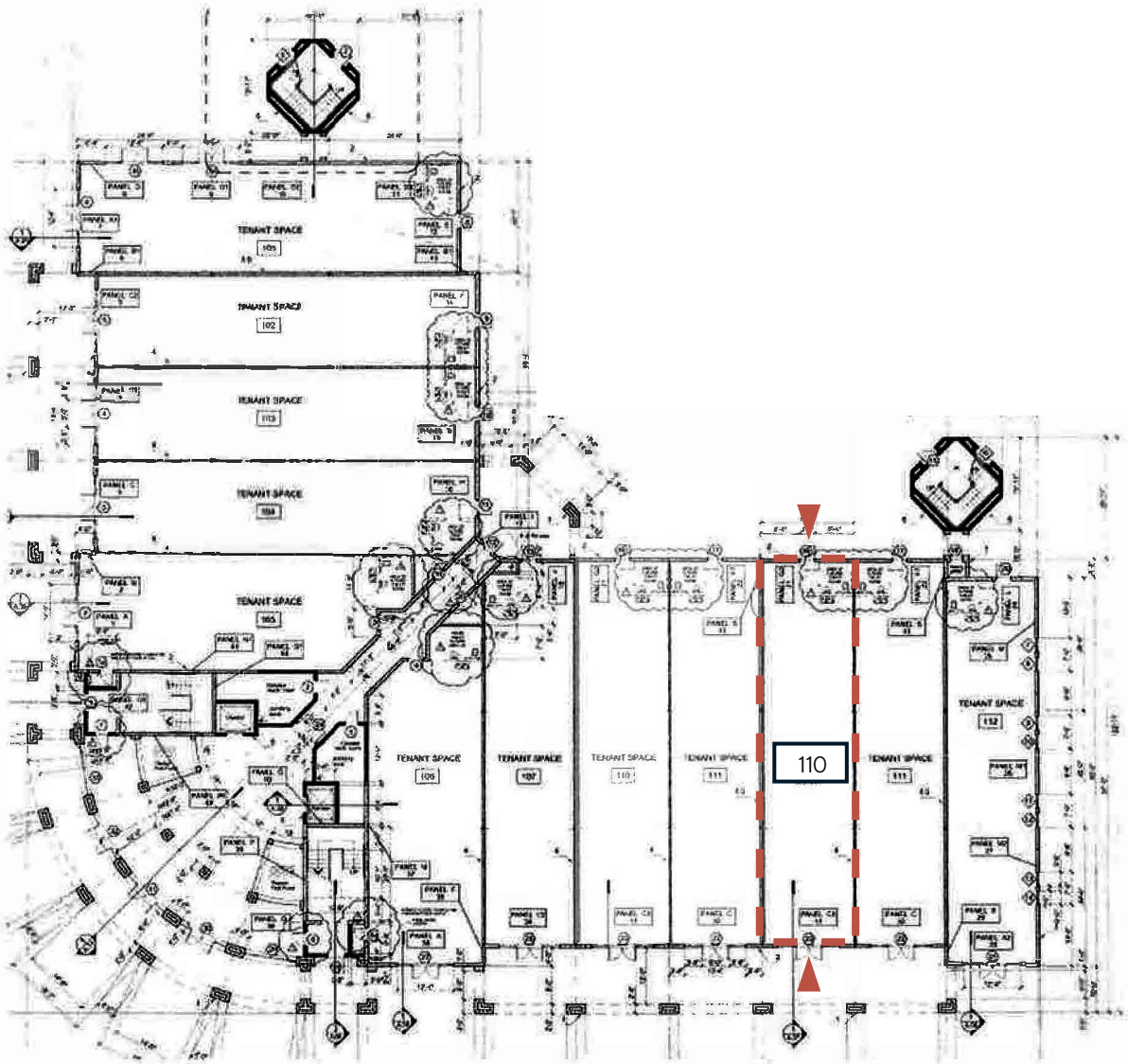
Offered at \$24.00/SF Modified Gross
(Net of utilities and janitorial)



Sublease through
12/31/2029



Furniture, Fixtures, & Equipment
Can be made available



4725 W SAND LAKE ROAD



22,798 s.f.
Entire 3rd Floor



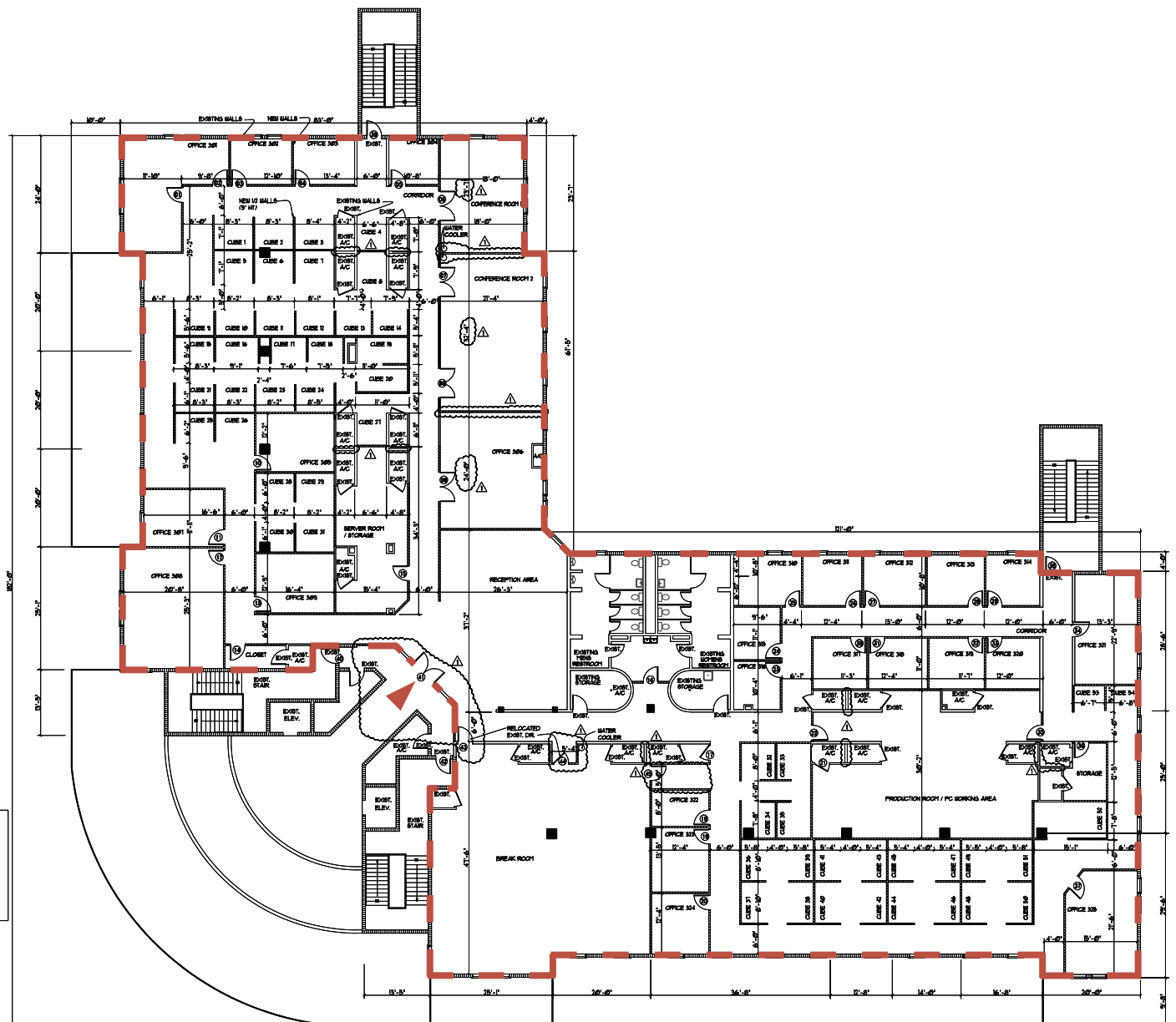
Offered at \$24.00/SF Modified Gross
(Net of utilities and janitorial)



Sublease through
12/31/2029



Furniture, Fixtures, & Equipment
Can be made available



4725 W SAND LAKE ROAD



JLL.com

John Worrell, CCIM
Senior Vice President
john.worrell@jll.com
+1 321 684-9240

Jamie Barati, SIOR, CCIM
Senior Vice President
jamie.barati@jll.com
+1 407 930 1803

Although information has been obtained from sources deemed reliable, neither Owner nor JLL makes any guarantees, warranties or representations, express or implied, as to the completeness or accuracy as to the information contained herein. Any projections, opinions, assumptions or estimates used are for example only. There may be differences between projected and actual results, and those differences may be material. The Property may be withdrawn without notice. Neither Owner nor JLL accepts any liability for any loss or damage suffered by any party resulting from reliance on this information. If the recipient of this information has signed a confidentiality agreement regarding this matter, this information is subject to the terms of that agreement. ©2026 Jones Lang LaSalle IP, Inc. All rights reserved.