



FOR LEASE

DIAMOND VALLEY CENTER

1109-1287 SOUTH STATE STREET | HEMET, CA

OFFICE
RETAIL
LAND
INDUSTRIAL

YOUR NAME HERE



JANET F. KRAMER, JD, CRRP
951.600.8634 x702
janetk@svn.com
CaIDRE #01351570



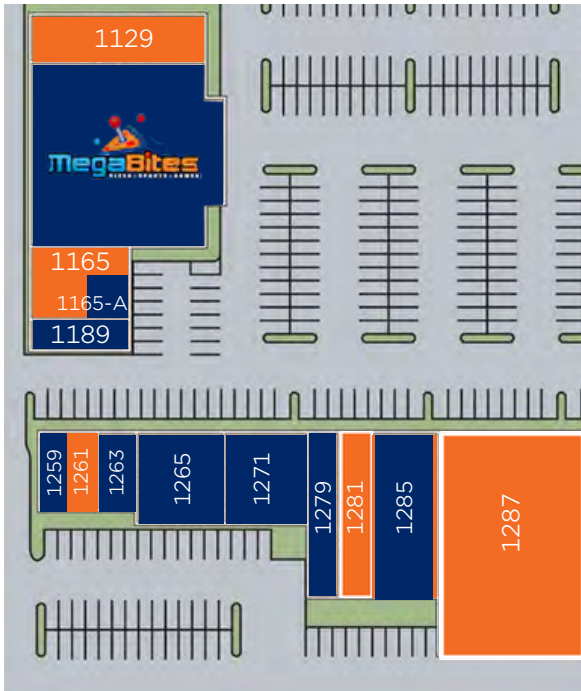
JOHN GOGA
951.551.0793
john.goga@svn.com
CaIDRE #01156272



STEVE CASTELLANOS
951.600.8634 x703
stevec@svn.com
CaIDRE #01922901

PROPERTY SUMMARY

DIAMOND VALLEY CENTER | 1109-1287 SOUTH STATE STREET | HEMET, CA



Asking \$1.25-\$1.50 PSF NNN
Nets Currently \$0.33

TENANT ROSTER								
SUITE	TENANT	SF	SUITE	TENANT	SF	SUITE	TENANT	SF
1109	Watermill	±225	1189	Smoke Shop	±1,200	1271	Restaurant	±3,600
1129	VACANT	±3,600	1259	Cynthia's	±1,000	1279	Appliances 4 Less	±3,082
1153	MegaBites	±15,400	1261	VACANT	±1,000	1281	VACANT	±2,160
1165	VACANT	±2,210	1263	Barber	±1,000	1285	Tri-Valley	±4,300
1165-A	Hair Salon	±790	1265	Eagles	±3,360	1287	VACANT	±15,000

JANET F. KRAMER, JD, CRRP
951.600.8634 x702
janetk@svn.com
CaIDRE #01351570

JOHN GOGA
951.551.0793
john.goga@svn.com
CaIDRE #01156272

STEVE CASTELLANOS
951.600.8634 x703
stevec@svn.com
CaIDRE #01922901



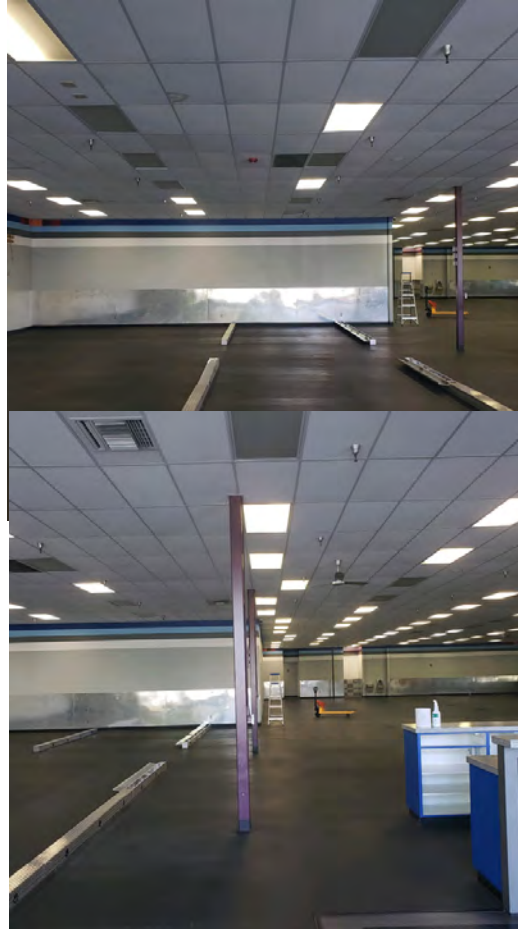
SUITE INTERIOR PHOTOS

DIAMOND VALLEY CENTER | 1109-1287 SOUTH STATE STREET | HEMET, CA

SUITE 1261 - ±1,000 SF



SUITE 1287 - ±15,000 SF



SUITE 1165 - ±2,210 SF



JANET F. KRAMER, JD, CRRP
951.600.8634 x702
janetk@svn.com
CaDRE #01351570

JOHN GOGA
951.551.0793
john.goga@svn.com
CaDRE #01156272

STEVE CASTELLANOS
951.600.8634 x703
stevec@svn.com
CaDRE #01922901



RETAILER MAP

DIAMOND VALLEY CENTER | 1109-1287 SOUTH STATE STREET | HEMET, CA



JANET F. KRAMER, JD, CRPP
951.600.8634 x702
janetk@svn.com
CaIDRE #01351570

JOHN GOGA
951.551.0793
john.goga@svn.com
CaIDRE #01156272

STEVE CASTELLANOS
951.600.8634 x703
stevec@svn.com
CaIDRE #01922901



DEMOGRAPHICS

DIAMOND VALLEY CENTER | 1109-1287 SOUTH STATE STREET | HEMET, CA



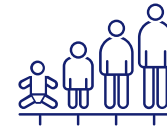
- State** California
- County** Riverside
- Mayor** Malcolm Lilienthal
- Website** hemetca.gov

POPULATION

Source: ESRI



96,600
POPULATION



38.4
MEDIAN AGE



33,375
HOUSEHOLDS

3-Mile
Radius



EMPLOYMENT



50%
WHITE COLLAR



33%
BLUE COLLAR



22%
SERVICES



10.2%
UNEMPLOYMENT RATE

EDUCATION



33%

HIGH SCHOOL
GRADUATE



36%

SOME COLLEGE



12%

BACHELORS/GRAD/
PROF DEGREE

INCOME



\$47,110

MEDIAN HOUSEHOLD
INCOME



\$23,472

PER CAPITA
INCOME



\$71,969

MEDIAN NET
WORTH

JANET F. KRAMER, JD, CRRP
951.600.8634 x702
janetk@svn.com
CaIDRE #01351570

JOHN GOGA
951.551.0793
john.goga@svn.com
CaIDRE #01156272

STEVE CASTELLANOS
951.600.8634 x703
stevec@svn.com
CaIDRE #01922901

