

DELRAY BUSINESS PARK

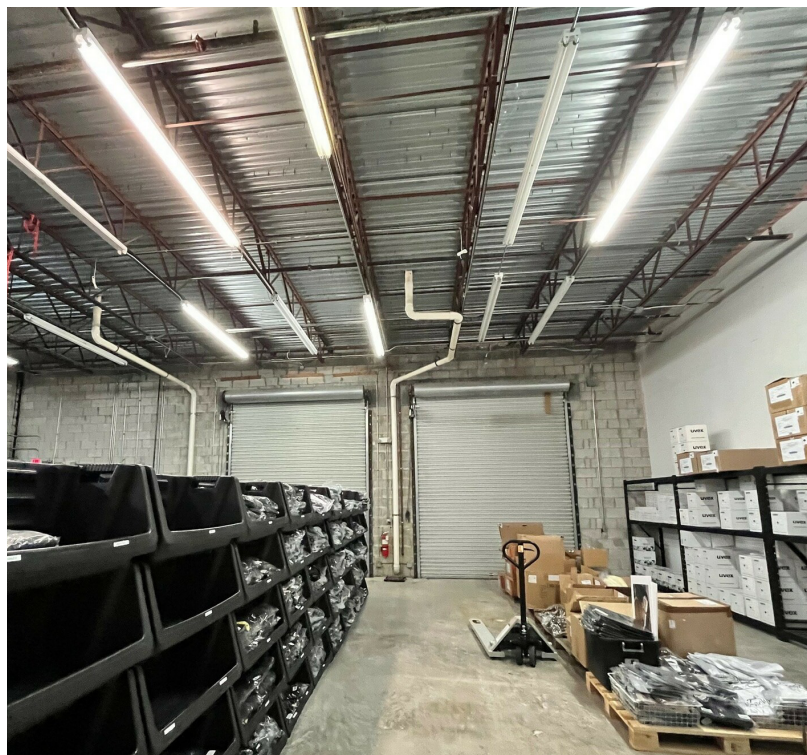
1255 NORTHWEST 17TH AVENUE, DELRAY BEACH, FL 33445

SUITE 2



SPACE HIGHLIGHTS

- 4,150 SF
- 100% Air-Conditioned Space
- AC in Warehouse Installed in 2025
- 1,683 SF 3 offices and Front Showroom
- Kitchenette
- 2 private restrooms
- 2 rear 10' x 12' grade level overhead doors
- 15' clear ceiling in warehouse
- Mezzanine
- Minutes from I-95



LORETTA SHATTO

Certified Property Manager/Sales Associate
Direct: 954.491.5505 | Cell: 954.302.8639
loretta@levyai.com

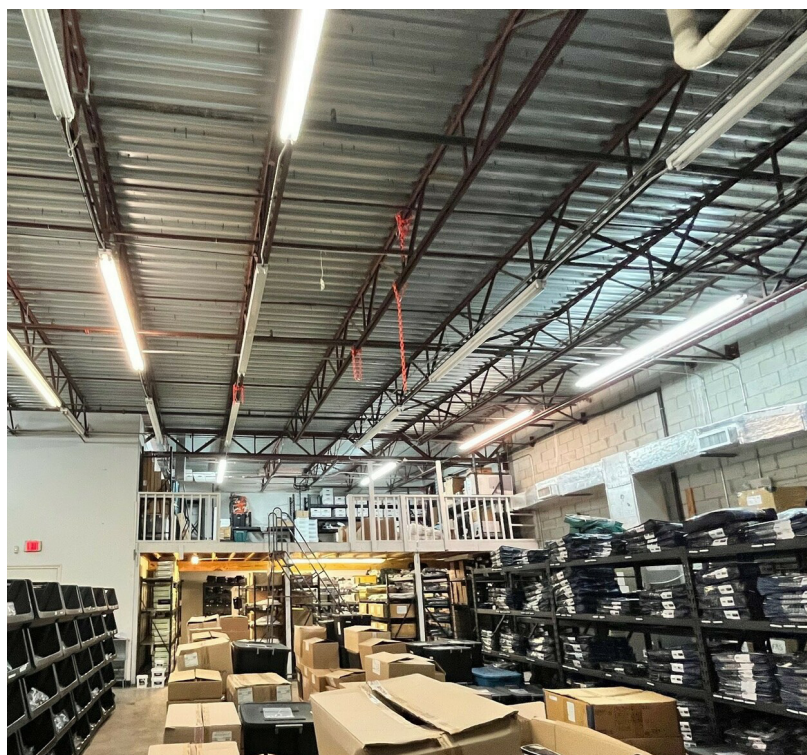


FOR LEASE

DELRAY BUSINESS PARK

1255 NORTHWEST 17TH AVENUE, DELRAY BEACH, FL 33445

SUITE 2 ADDITIONAL PHOTOS



LORETTA SHATTO

Certified Property Manager/Sales Associate
Direct: 954.491.5505 | Cell: 954.302.8639
loretta@levyrai.com



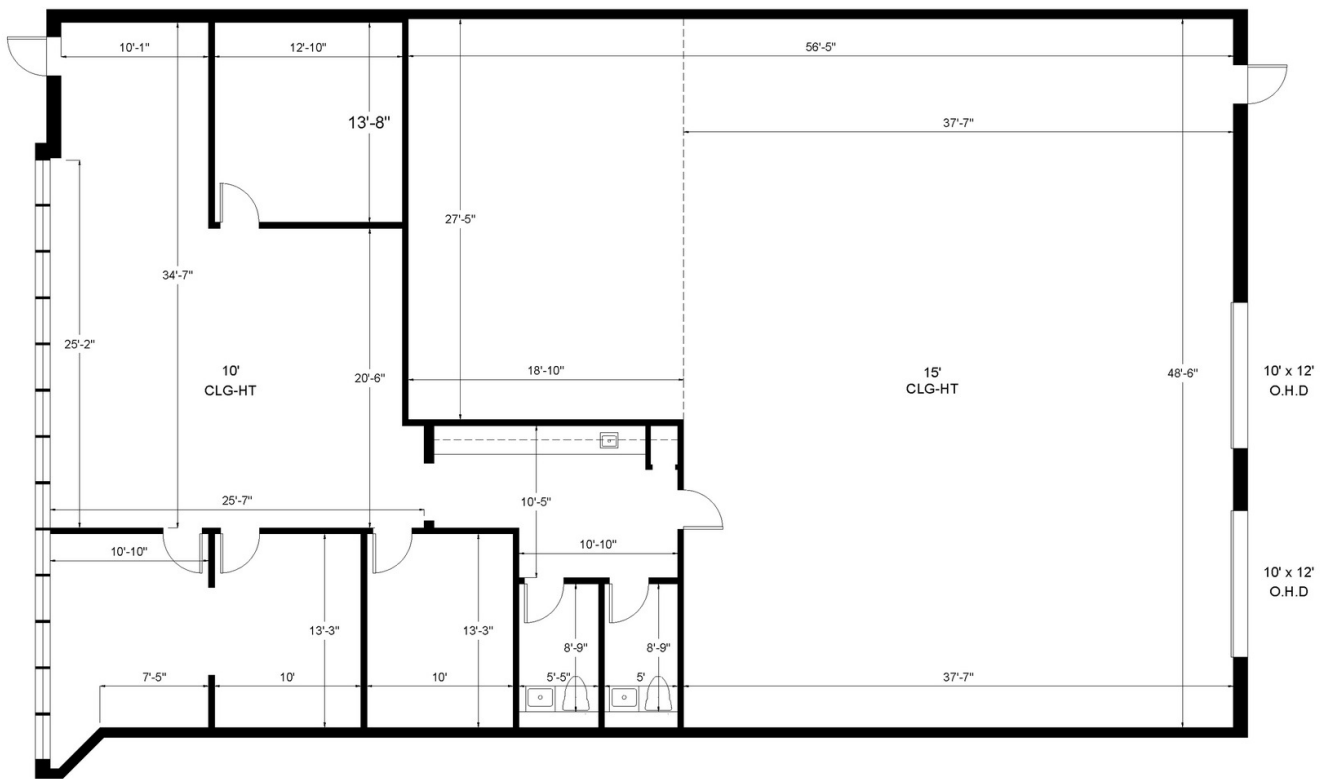
DELRAY BUSINESS PARK

1255 NORTHWEST 17TH AVENUE, DELRAY BEACH, FL 33445

SUITE 2 FLOOR PLAN

DELRAY BUSINESS PARK

1255 NW 17th Avenue | Delray Beach, FL 33444
Suite 2



Office - 1,683 Sq. Ft.
Warehouse - 2,467 Sq. Ft.

4,150 Rentable Sq. Ft.
www.LevyRealtyAdvisors.com

LORETTA SHATTO

Certified Property Manager/Sales Associate
Direct: 954.491.5505 | Cell: 954.302.8639
loretta@levyrai.com

