



Salts Mill Road, Shipley, Bradford, The Waterfront,  
Salts Mill Road, Shipley, BD17 7TD

---

Serviced office spaces TO LET

- Common Areas
- Elevator
- Parking
- Business Park Location
- City/Town Centre
- Meeting Rooms
- Airport Location
- Wheelchair Accessible

## Summary

<b>Available Size</b>	215 to 646 sq ft
<b>Rent</b>	£44.60 per sq ft
<b>Business Rates</b>	Upon Enquiry
<b>EPC Rating</b>	C

## Description

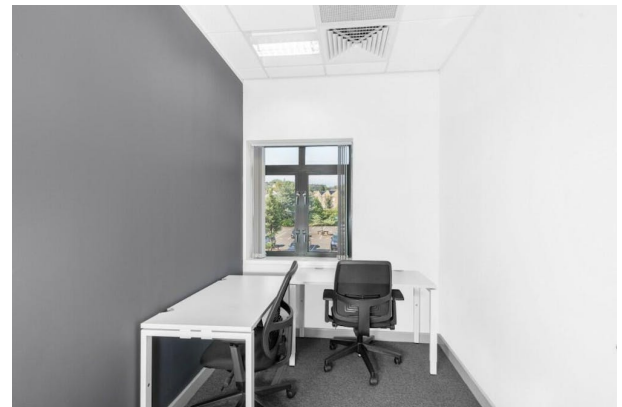
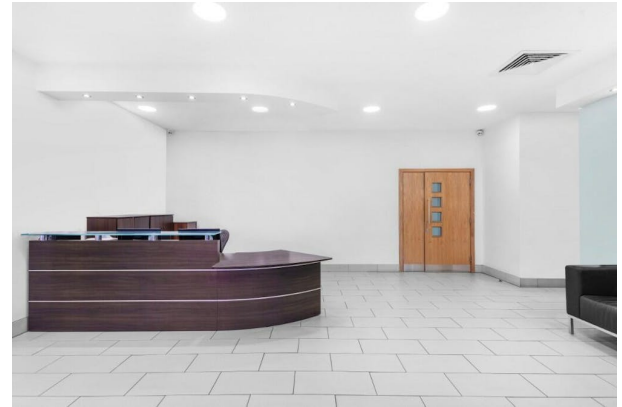
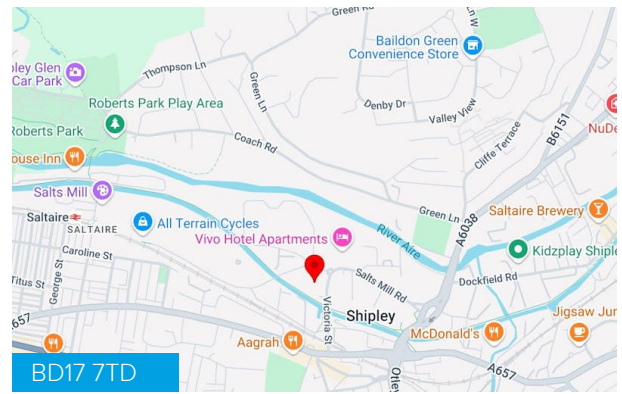
Feel at home immediately in the light and airy workspace. Take in the scenic waterside views and catch up with colleagues and clients on the outdoor terrace, before strolling to The Salts Mill Cafe's and Galleries.

## Location

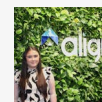
Salts Mill Road is located in the centre of Shipley off the A6038 which offers access into the Centre of Bradford. Transport links are excellent with Commercial Street, Upper Ashley Lane bus stop (676 and 678) which is 0.5-miles away, located along Saltaire Road. Access to Saltaire Train Station is 1.1-miles away and Shipley Train Station is 0.8-miles away, providing access in and around Bradford City with bars and restaurants within walking distance.

The A650 is just west from the site which connects to the M6 North and South which connects to Glasgow going North bound and to Manchester and Liverpool South bound. To the East of Shipley is the A658 which connects with the A1(M) which gives access to larger cities such as Newcastle, Leeds and London.

Leeds Bradford Airport is 7.5 miles North East of Shipley.



## Viewing & Further Information



**Caitlin Parker**

01609 797 330

[caitlin.parker@alignpropertypartners.co.uk](mailto:caitlin.parker@alignpropertypartners.co.uk)

**View Properties Here**  
[www.alignpropertypartners.co.uk](http://www.alignpropertypartners.co.uk)

