

SUNRISE MEDICAL PARK

8391-8399 W OAKLAND PARK BLVD, SUNRISE, FL 33351

PROPERTY SUMMARY



360° VIRTUAL TOUR

PROPERTY DESCRIPTION

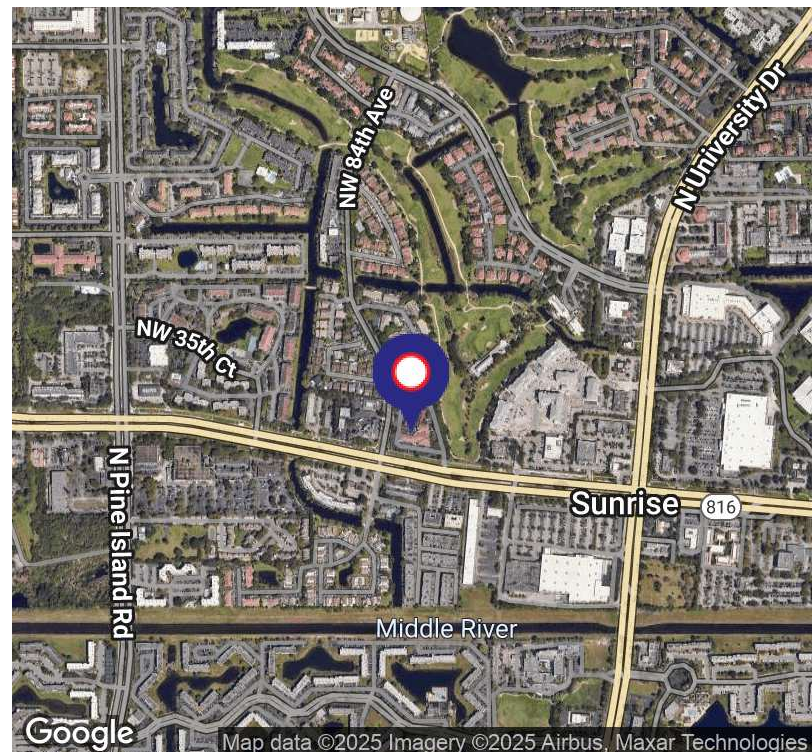
The Sunrise Medical Park was built in 1992 and is a 28,798 SF Class A medical office campus. The park is composed of 4 single story buildings with convenient drive-up access. Sunrise Medical Park is located on W. Oakland Park Boulevard and University Drive, and is within 4 miles of 3 hospitals: HCA Woodmont, HCA Florida Westside and Florida Medical Center. The campus has all turnkey medical spaces with functional layouts suited for a variety of medical office uses. Suite sizes range from 1,300 SF to 5,000 SF. The campus overlooks the Bridges at Springtree Golf Club and is just 10 minutes to the Sawgrass Expressway. There is ample parking and accessibility with the parking ratio of 6/1,000 SF. Sunrise Medical Park is zoned B-2 for General Commercial Zoning.

PROPERTY HIGHLIGHTS

- Medical office campus with 4 single-story buildings
- Turnkey Medical spaces
- Suite Sizes from 1,300 Sq. Ft. - 5,000 Sq. Ft.
- Ample parking at 6 spaces per 1,000 sf and accessibility
- Proximity to 3 Hospitals: HCA Woodmont, HCA Florida Westside & Florida Medical Center
- Prime location along W. Oakland Park Blvd and University Drive

HALEY PRESSER

Property Manager / Sales Associate
Direct: 954.485.9200 | Cell: 954.254.5396
Haley@levyai.com



FOR LEASE

SUNRISE MEDICAL PARK

8391-8399 W OAKLAND PARK BLVD, SUNRISE, FL 33351

SUNRISE MEDICAL PARK PHOTOS



HALEY PRESSER

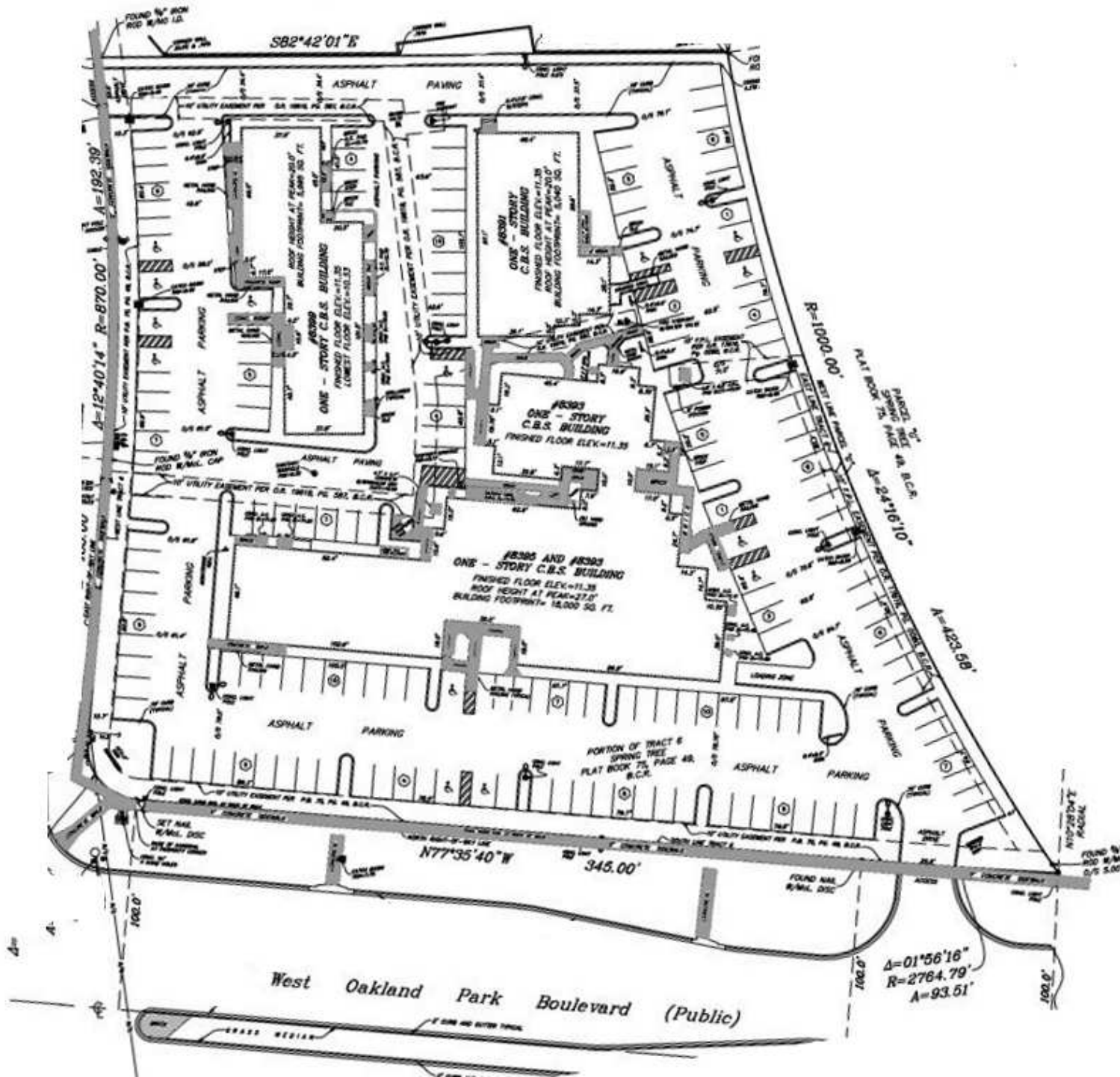
Property Manager / Sales Associate
Direct: 954.485.9200 | Cell: 954.254.5396
Haley@levyrai.com



SUNRISE MEDICAL PARK

8391-8399 W OAKLAND PARK BLVD, SUNRISE, FL 33351

SUNRISE MEDICAL PARK SURVEY



HALEY PRESSER

Property Manager / Sales Associate
Direct: 954.485.9200 | Cell: 954.254.5396
Haley@levyrai.com

