

REMAX
COMMERCIAL®

FOR LEASE
NEW MAIN FLOOR COMMERCIAL SPACE
9700 Main Street, Lake Country, BC



Kris McLaughlin Personal Real Estate Corporation
kris@commercialbc.com
250.870.2165

REMAX Commercial - REMAX Kelowna
1391 Ellis Street, Kelowna, BC V1Y 6G1

Each Office Independently Owned and Operated.

Property Details

Civic Address:

9700 Main Street, Lake Country, BC

Location:

Located on the west side of Main Street between Hill Rd and Winfield Rd in the Lake Country's Town Centre

Total Space Available:

Unit 103: ±2,590 SF

Unit 104: ±1,954 SF

Zoning:

C1 - Mixed-Use Commercial

Lease Rate:

Unit 103: \$26.00/SF plus additional rents & applicable taxes

Unit 104: \$27.00/SF plus additional rents & applicable taxes

Two Brand-New Commercial Units Available For Lease in the Downtown Area of Lake Country

Opportunity:

RE/MAX Commercial presents this outstanding opportunity to lease retail/office space in a new mixed-use building on Main Street in the commercial area of Lake Country

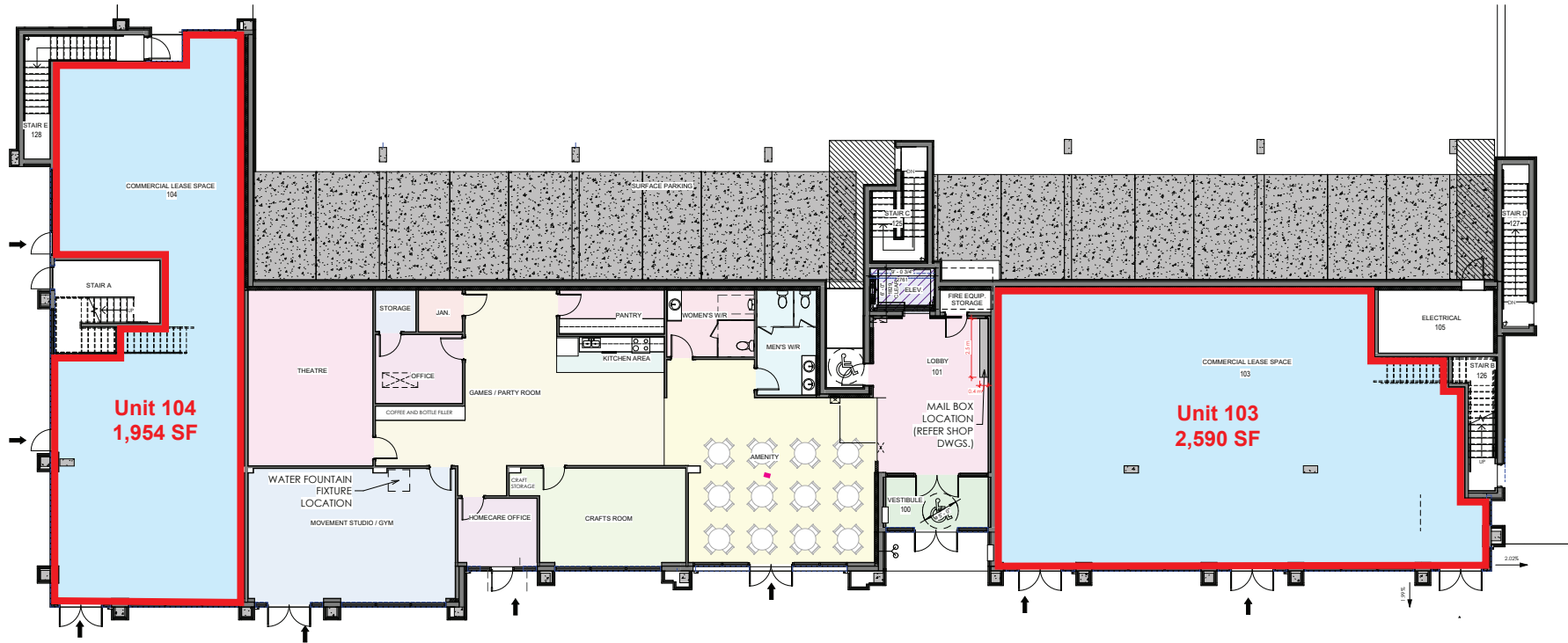
Features:

Two brand new commercial units on the main floor, with frontage along Main Street.

- ▶ Retail/office units now leasing on the main floor of a new 6-storey mixed-use building with commercial space on the main floor with 5 storeys of residential above
- ▶ Located in the centre of the Town Centre commercial area of Lake Country just one block east of Highway 97N, near restaurants, coffee shops, financial institutions, boutique shops and professional services
- ▶ Parking will be to the rear of the building or on nearby streets
- ▶ Public transportation nearby
- ▶ For more information or to discuss this opportunity to prelease these brand-new retail/office units contact Kris McLaughlin, PREC at 250 870 2165 or by email at kris@commercialbc.com



Floor Plan



① MAIN FLOOR PLAN
1/8" = 1'-0"

MAIN STREET

Note: Floor plan has been provided, is approximate and may not be to scale. Some interior walls may have been adjusted. If important, information and configuration should be verified.

FOR LEASE: 9700 Main Street, Lake Country, BC

Exterior Rendering

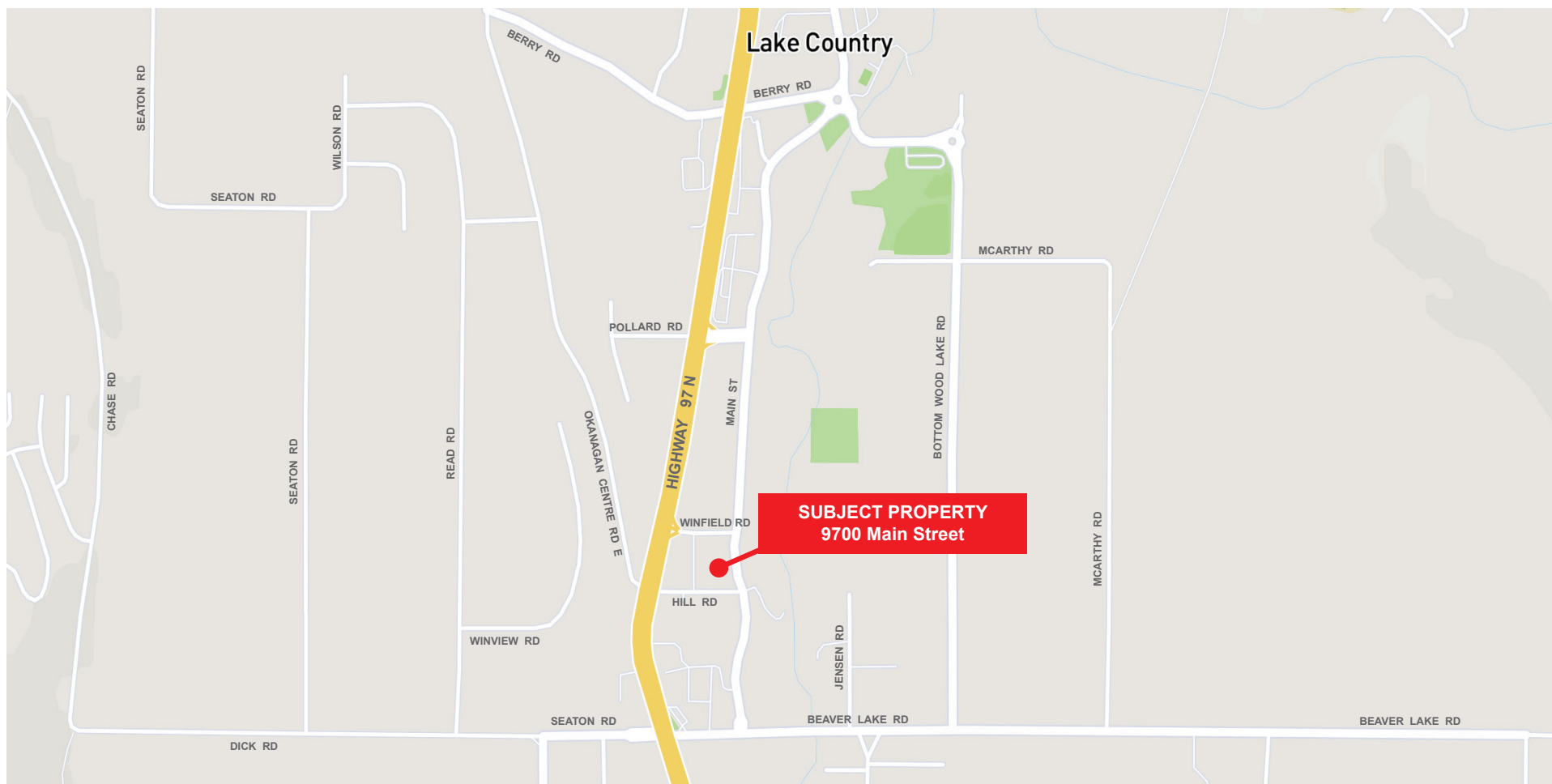


FOR LEASE: 9700 Main Street, Lake Country, BC

Exterior Rendering



FOR LEASE: 9700 Main Street, Lake Country, BC



Kris McLaughlin Personal Real Estate Corporation
REMAX Commercial - REMAX Kelowna
#100 - 1553 Harvey Ave, Kelowna, BC V1Y 6G1
kris@commercialbc.com
250.870.2165



© Kris McLaughlin Personal Real Estate Corporation - All Rights Reserved.

This document/email has been prepared by Kris McLaughlin Personal Real Estate Corporation for advertising and general information only. Kris McLaughlin Personal Real Estate Corporation, REMAX Commercial or REMAX Kelowna makes no guarantees, representations or warranties of any kind, expressed or implied, regarding the information including, but not limited to warranties of content, accuracy and/or reliability. All information contained in this document has been obtained from sources believed to be reliable. It is the responsibility of the reader to independently confirm and verify the accuracy of the information and content of this document and to satisfy themselves as to its completeness. Any financial projects, assumptions, or estimates are used for example only and may or may not reflect the current or future performance of the property. This communication is not intended to cause or induce breach of an existing listing agreement.

