

33155-33161 CAMINO CAPISTRANO, SAN JUAN CAPISTRANO, CA 92675

# THE ESPLANADE BUSINESS PARK



*Office, industrial, medical, and retail suites available for lease in San Juan Capistrano, CA*

Immediate occupancy

Freeway signage

Convenient access to the 5 Freeway

ERIC TSE  
949.557.5018 | [eric.tse@kidder.com](mailto:eric.tse@kidder.com)  
LIC N° 01476614

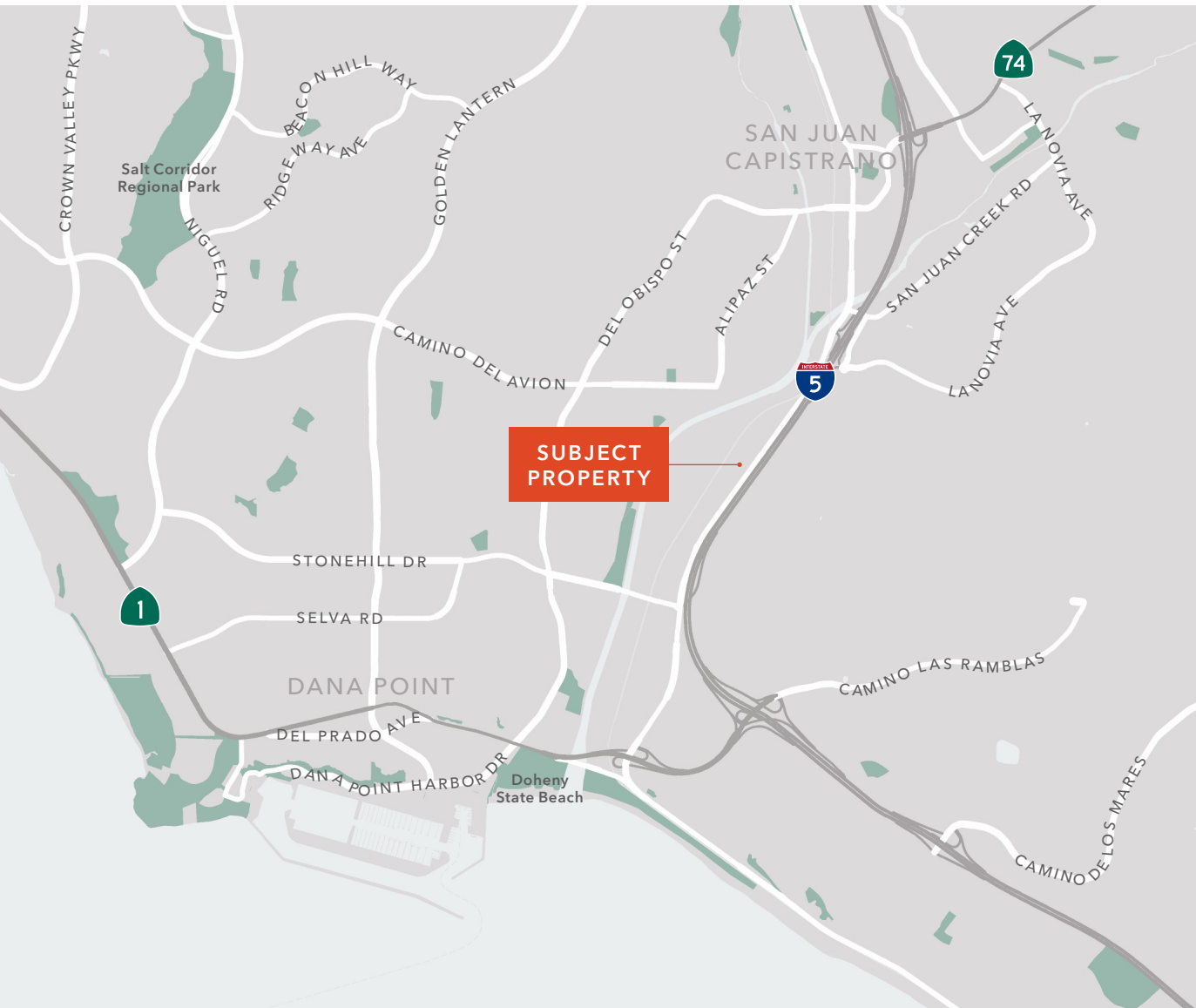
ALEX MATAR  
949.557.5069 | [alex.matar@kidder.com](mailto:alex.matar@kidder.com)  
LIC N° 01990417

**KIDDER.COM**

This information supplied herein is from sources we deem reliable. It is provided without any representation, warranty, or guarantee, expressed or implied as to its accuracy. Prospective Buyer or Tenant should conduct an independent investigation and verification of all matters deemed to be material, including, but not limited to, statements of income and expenses. Consult your attorney, accountant, or other professional advisor. All Kidder Mathews designs are the sole property of Kidder Mathews. Branded materials and layouts are not authorized for use by any other firm or person.



# THE ESPLANADE BUSINESS PARK



## Availabilities

Building	Suite	RSF	Notes
33161	B1	±535 SF	Two (2) offices, conference room, open area and storage room
33161	K-1	±349 SF	Two (2) offices, miscellaneous furniture available
33161	J	±618 SF	

**ERIC TSE**  
 949.557.5018 | eric.tse@kidder.com  
 LIC N° 01476614

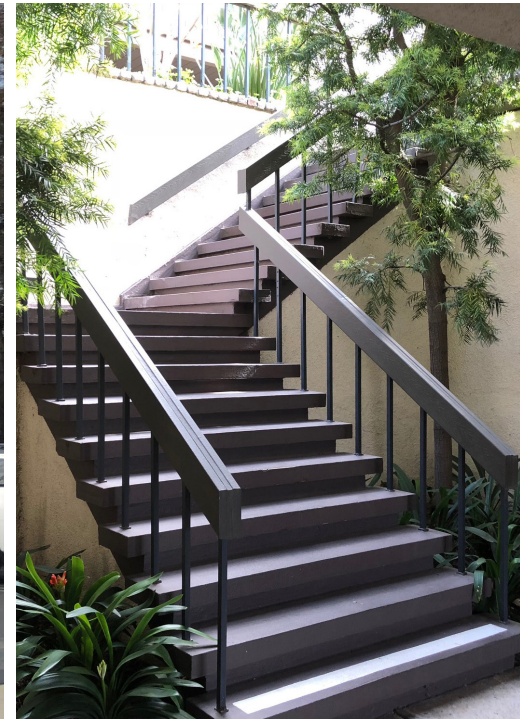
**ALEX MATAR**  
 949.557.5069 | alex.matar@kidder.com  
 LIC N° 01990417

**KIDDER.COM**

This information supplied herein is from sources we deem reliable. It is provided without any representation, warranty, or guarantee, expressed or implied as to its accuracy. Prospective Buyer or Tenant should conduct an independent investigation and verification of all matters deemed to be material, including, but not limited to, statements of income and expenses. Consult your attorney, accountant, or other professional advisor. All Kidder Mathews designs are the sole property of Kidder Mathews. Branded materials and layouts are not authorized for use by any other firm or person.



# THE ESPLANADE BUSINESS PARK



ERIC TSE  
949.557.5018  
eric.tse@kidder.com  
LIC N° 01476614

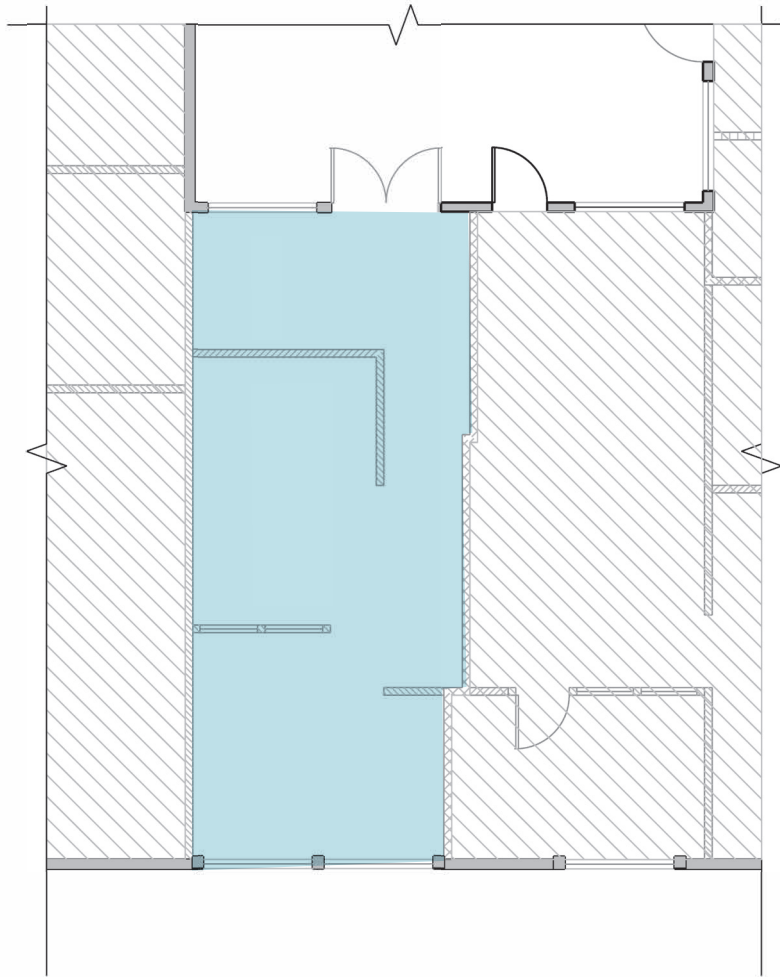
ALEX MATAR  
949.557.5069  
alex.matar@kidder.com  
LIC N° 01990417

[KIDDER.COM](http://KIDDER.COM)

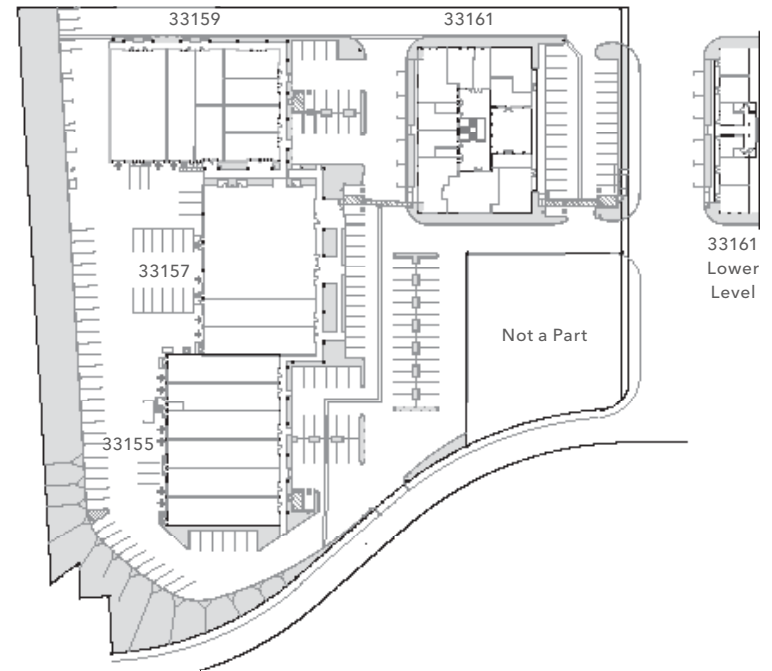
This information supplied herein is from sources we deem reliable. It is provided without any representation, warranty, or guarantee, expressed or implied as to its accuracy. Prospective Buyer or Tenant should conduct an independent investigation and verification of all matters deemed to be material, including, but not limited to, statements of income and expenses. Consult your attorney, accountant, or other professional advisor. All Kidder Mathews designs are the sole property of Kidder Mathews. Branded materials and layouts are not authorized for use by any other firm or person.

 **Kidder  
Mathews**

# 33161 CAMINO CAPISTRANO, SUITE B1 FLOOR PLAN



*Available Now*



***±535 SF***  
AVAILABLE

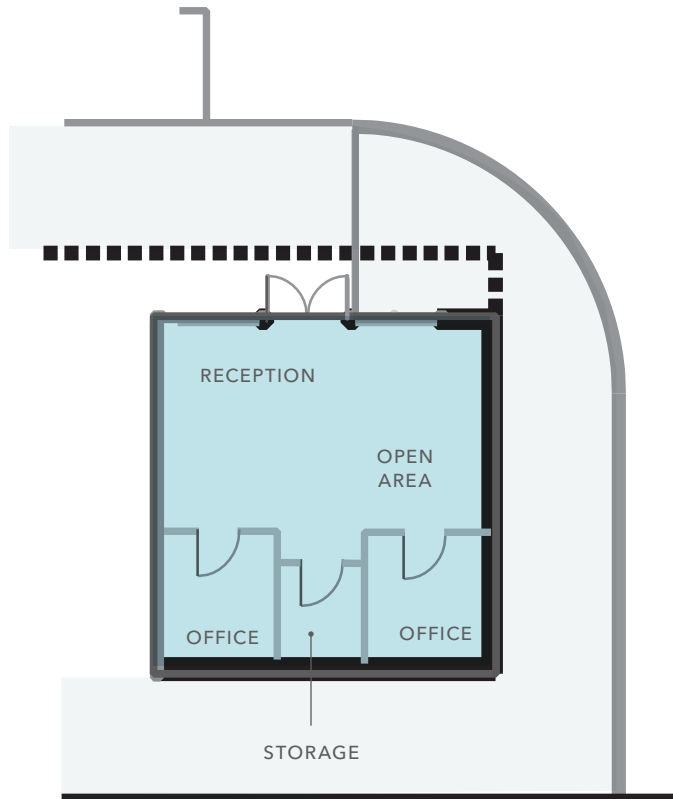
***NOW***  
AVAILABLE

[KIDDER.COM](http://KIDDER.COM)

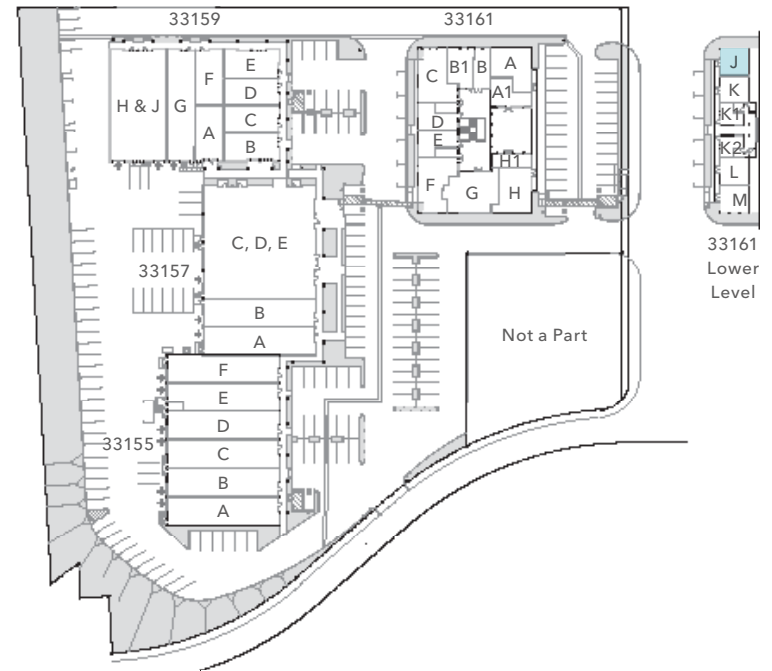
This information supplied herein is from sources we deem reliable. It is provided without any representation, warranty, or guarantee, expressed or implied as to its accuracy. Prospective Buyer or Tenant should conduct an independent investigation and verification of all matters deemed to be material, including, but not limited to, statements of income and expenses. Consult your attorney, accountant, or other professional advisor. All Kidder Mathews designs are the sole property of Kidder Mathews. Branded materials and layouts are not authorized for use by any other firm or person.



# 33161 CAMINO CAPISTRANO, SUITE J FLOOR PLAN



*Available Now*



***±618 SF***  
AVAILABLE

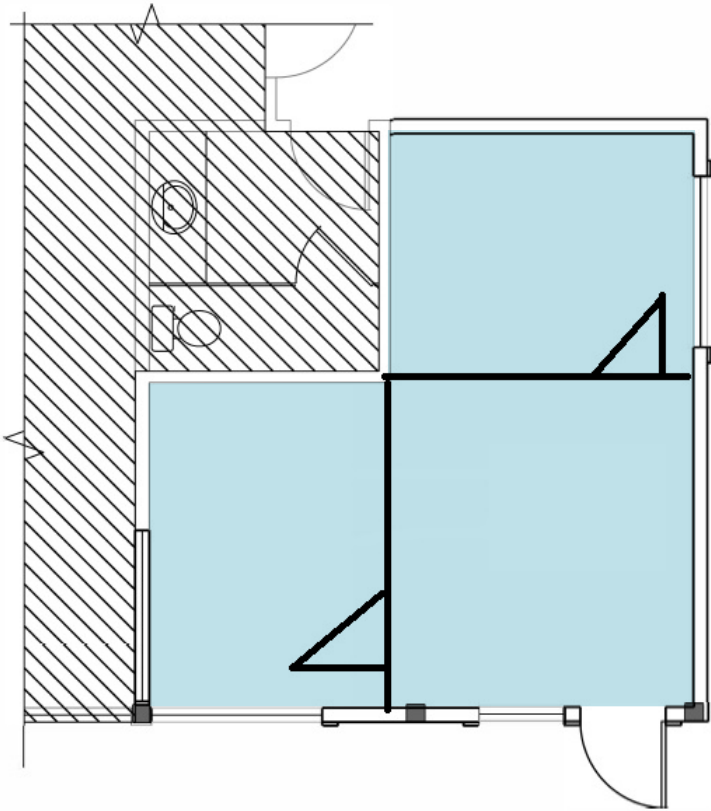
***NOW***  
AVAILABLE

[KIDDER.COM](http://KIDDER.COM)

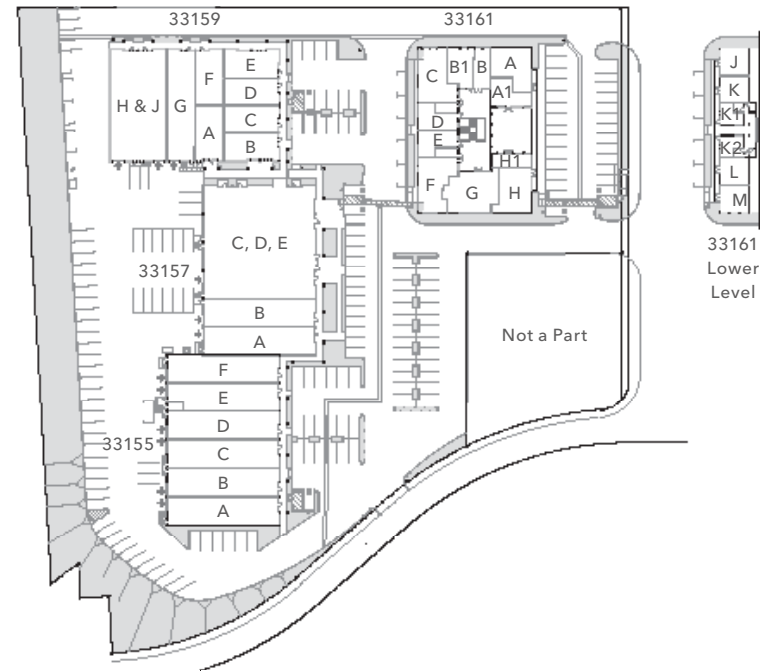
This information supplied herein is from sources we deem reliable. It is provided without any representation, warranty, or guarantee, expressed or implied as to its accuracy. Prospective Buyer or Tenant should conduct an independent investigation and verification of all matters deemed to be material, including, but not limited to, statements of income and expenses. Consult your attorney, accountant, or other professional advisor. All Kidder Mathews designs are the sole property of Kidder Mathews. Branded materials and layouts are not authorized for use by any other firm or person.



# 33161 CAMINO CAPISTRANO, SUITE K1 FLOOR PLAN



*Available Now*



***±349 SF***  
AVAILABLE

***NOW***  
AVAILABLE

[KIDDER.COM](http://KIDDER.COM)

This information supplied herein is from sources we deem reliable. It is provided without any representation, warranty, or guarantee, expressed or implied as to its accuracy. Prospective Buyer or Tenant should conduct an independent investigation and verification of all matters deemed to be material, including, but not limited to, statements of income and expenses. Consult your attorney, accountant, or other professional advisor. All Kidder Mathews designs are the sole property of Kidder Mathews. Branded materials and layouts are not authorized for use by any other firm or person.

