

Sutter Square

1800 Sutter Street, Suite 500, Concord, CA 94520



PRIVATE OFFICES

Highly professional private offices for individuals and teams that are flexible and scaled for growth.

MEETING ROOMS

Spacious, well-appointed meeting rooms with on-site administrative support. Available for an hour, day or longer.

VIRTUAL OFFICES

Establish a business presence with mail handling, phone answering or meeting room time.

ABOUT THIS LOCATION

Our Concord office space is in the Sutter Square Class A building surrounded by Sutter Street, Mira Vista Terrace, Clayton Road, and Willow Pass Road. This prime location offers easy access to Interstate 680, Highway 242, and Highway 4. Our hybrid office space on the 5th floor offers 74 private offices, 2 conference rooms, an on-site administrative staff, and a virtual office address for your business needs.

CONTACT US

Let's touch base! Contact the on-site General Manager at 925-338-8505 or SUTmanager@premierworkspaces.com to schedule a tour.



Sutter Square

1800 Sutter Street, Suite 500, Concord, CA 94520



PREMIER AMENITIES

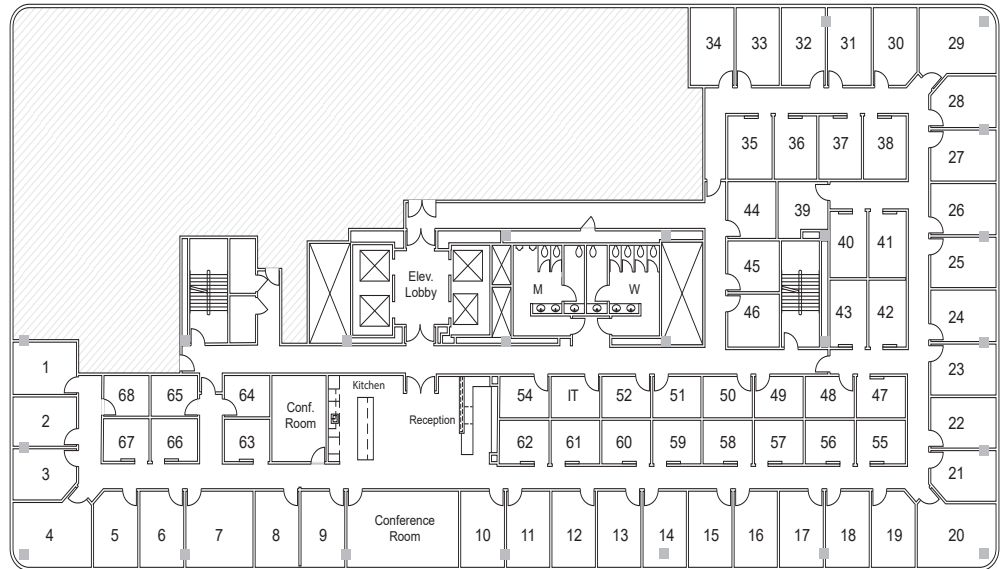
Our private suites can be easily customized to fit your desired aesthetic and brand.

- Private Offices
- Team Rooms
- High Speed Internet
- Telephone Answering
- Mail Collection
- Equipped Kitchen
- Day Offices
- Meeting Rooms
- Daily Janitorial
- Furnished or Unfurnished

PREMIER DIFFERENCE

We've been perfecting the professional workspace for over 20 years.

- Highly-Professional Atmosphere
- On-Site Manager & Support Staff
- Scalable Solutions for Individuals and Teams
- On-Site Billing
- 90+ Locations Nationwide



NEARBY AMENITIES

Located in downtown Concord, one of California's highest profile business communities. Sutter Square is 3 blocks from Concord BART and Highway 242. It is also within walking distance to major retail, financial and business services.

Nearby Amenities:

- Ellis Lake Park
- Todos Santos Plaza
- Brenden Theatres
- Sutter Plaza

Onsite Amenities:

- Fitness Center
- 2 Story Marble Atrium
- 6 Levels of Subterranean Parking

CONTACT US

Let's touch base! Contact the on-site General Manager at 925-338-8505 or SUTmanager@premierworkspaces.com to schedule a tour.