



# metroplace 1

2650 PARK TOWER DRIVE | VIENNA, VA

**OFFICE LEASING: 703.522.4600**

**METROPLACE1.COM**

**DOUG MCLEARN**

dmclearn@lpc.com

703.284.5862

**CORRELL CAULFIELD**

ccaufield@lpc.com

703.284.5886

# LOCAL RETAIL

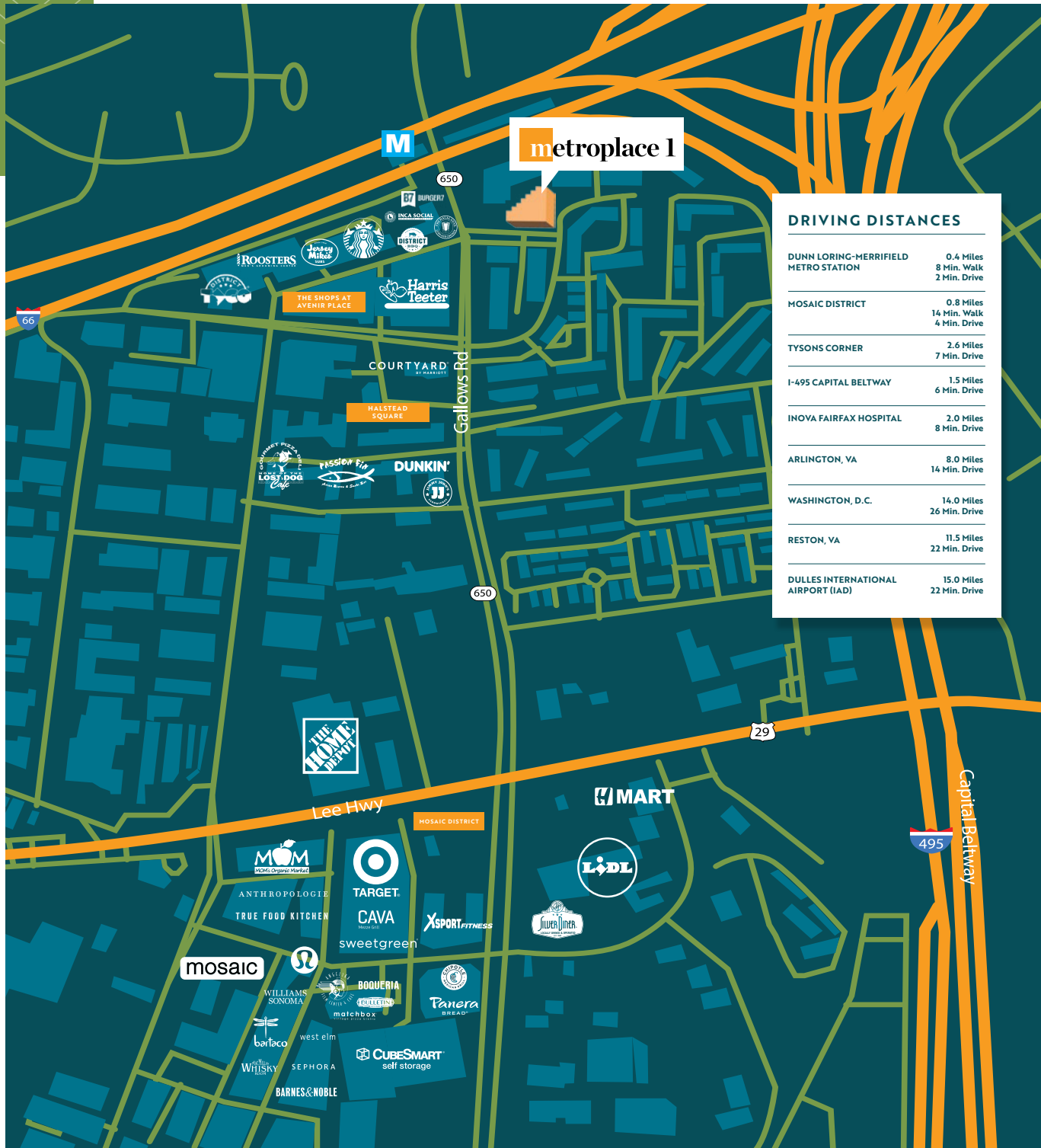
## THE SHOPS AT AVENIR PLACE



## HALSTEAD SQUARE



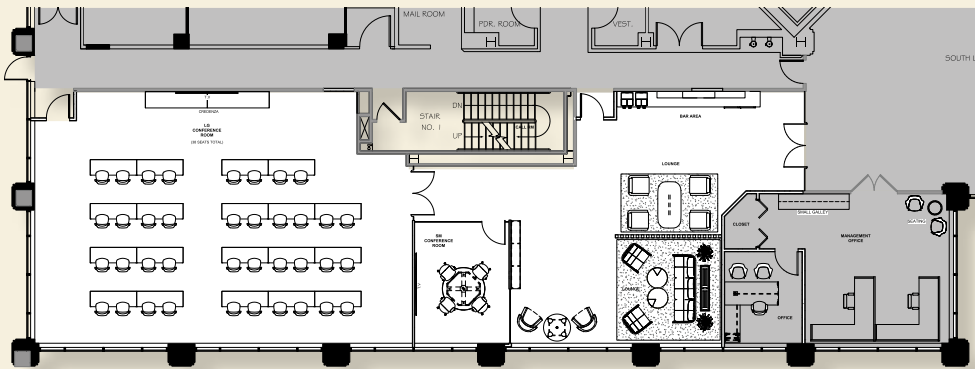
## MOSAIC DISTRICT



DRIVING DISTANCES	
DUNN LORING-MERRIFIELD METRO STATION	0.4 Miles 8 Min. Walk 2 Min. Drive
MOSAIC DISTRICT	0.8 Miles 14 Min. Walk 4 Min. Drive
TYSONS CORNER	2.6 Miles 7 Min. Drive
I-495 CAPITAL BELTWAY	1.5 Miles 6 Min. Drive
INOVA FAIRFAX HOSPITAL	2.0 Miles 8 Min. Drive
ARLINGTON, VA	8.0 Miles 14 Min. Drive
WASHINGTON, D.C.	14.0 Miles 26 Min. Drive
RESTON, VA	11.5 Miles 22 Min. Drive
DULLES INTERNATIONAL AIRPORT (IAD)	15.0 Miles 22 Min. Drive

COMING TO METROPLACE 1 IN IQ 2024

Host your next  
big meeting,

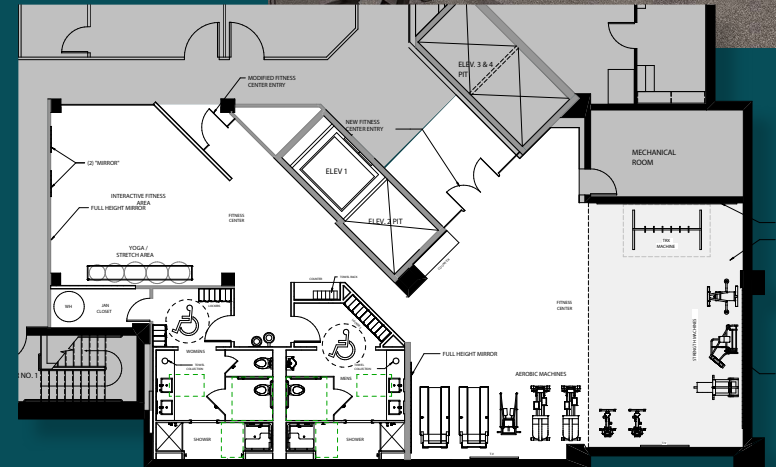


## CONFERENCE CENTER

- 40-person conferencing capacity
- Tenant lounge area
- Coffee bar



Crush your  
fitness goals



## EXPANDED FITNESS CENTER

- Yoga Area
- State-of-the-art Fitness Equipment
- Showers & Lockers
- Towel Service

## OUTDOOR PARK SETTING & PATIO

---

**A place to inspire  
your best work.**

### **EXPAND YOUR WORKPLACE. PARK YOURSELF HERE.**

---

**At Metroplace 1, the office expands beyond the walls.**

Enjoy wooded surroundings where tenants can maximize the outdoor areas for huddle-ups or stepping away from their desks. Take your next conference call outside or unwind on the outdoor patio & café.

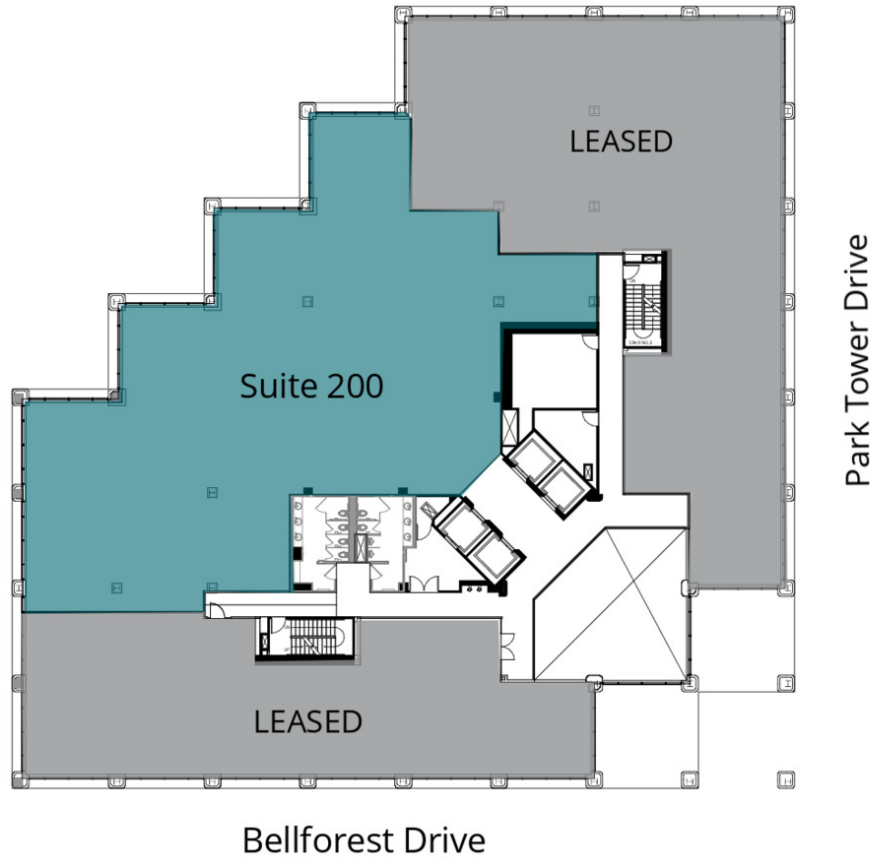




Availabilities	SF	Date Available
Suite 200	8,527 SF	Immediately
Suite 300	23,124 SF	2/1/2027
Suite 501	3,404 - 6,340 SF	Immediately
Suite 502	2,936 - 6,340 SF	Immediately
Suite 800	4,232 SF	Immediately
Suite 850	2,746 SF	January 2026

### Property Highlights

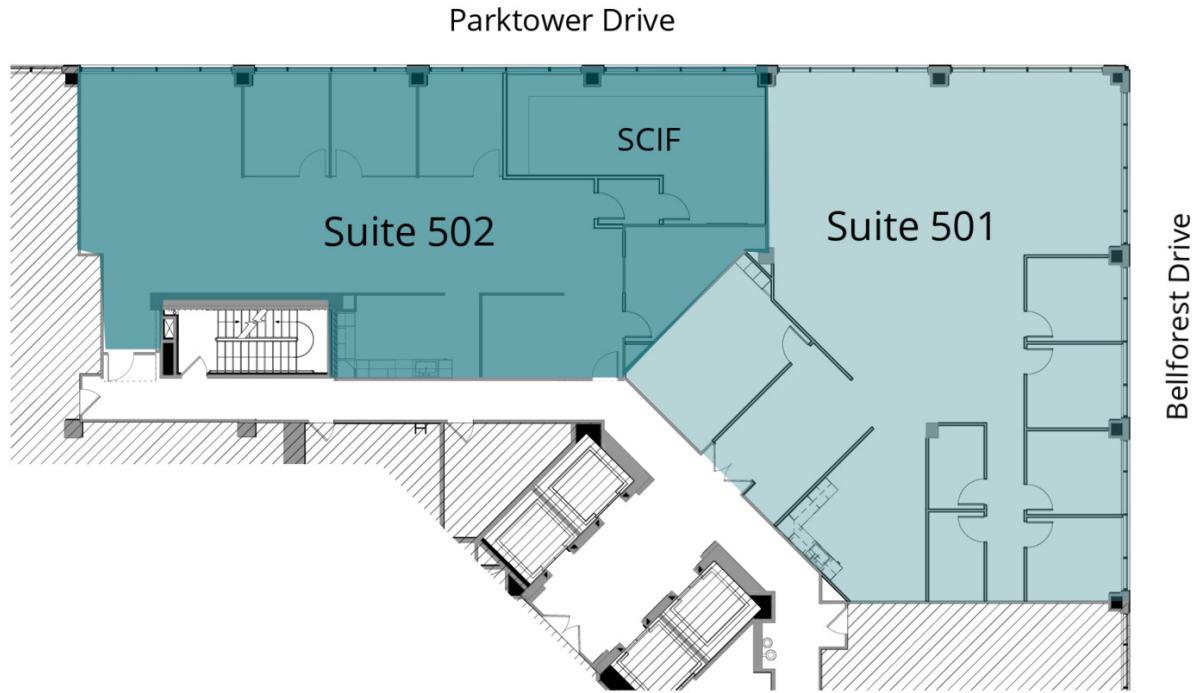
- Outdoor patio seating
- Walking distance to abundant amenities Shops at Avenir Place, Halstead Square and Mosaic District
- Direct Access to Dunn Loring-Merrifield Metro-Orange Line
- Highly visible from I-66. Easy access to I-495 & Tysons Corner
- Free structured parking with a ratio of 3.6/ 1,000 SF
- Recently renovated on-site deli
- New 40+ person conference center with a lounge and coffee bar
- New expanded fitness center with showers, lockers, yoga area, and aerobic machines
- On-site property management services



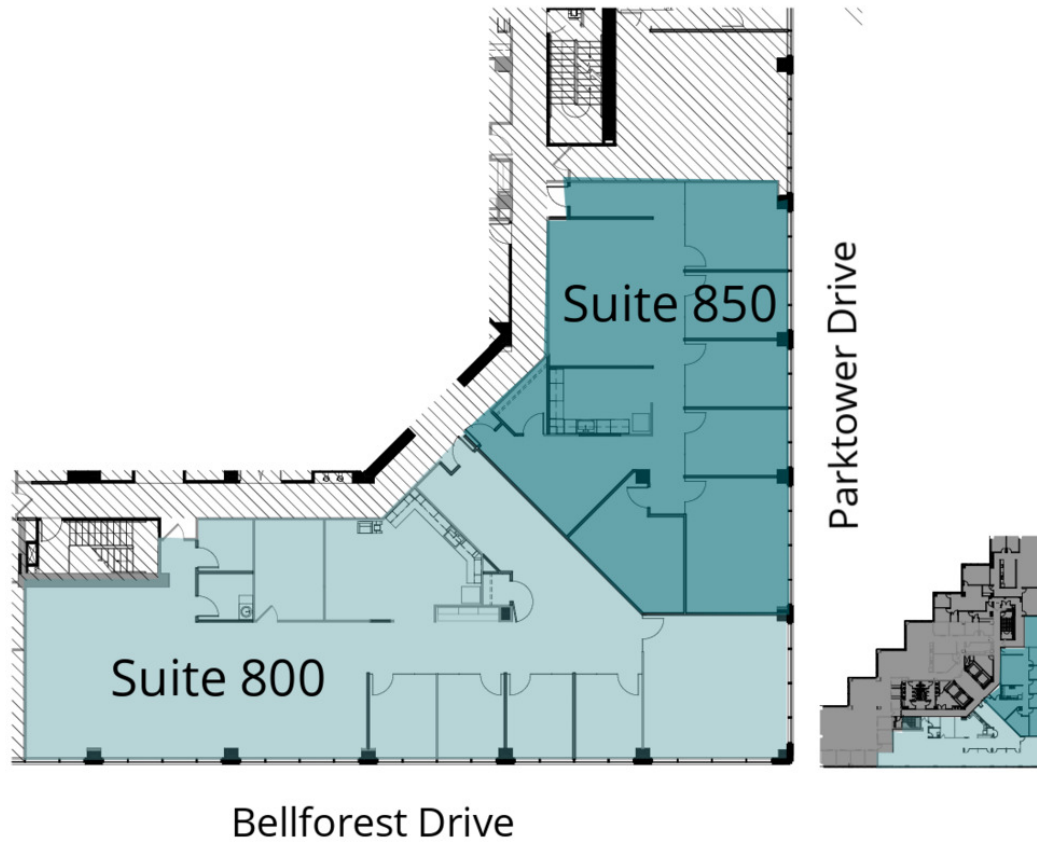
Suite	Size	Description
■ Suite 200	8,527 SF	Shell Condition Available Immediately



Suite	Size	Description
■ Suite 300	23,124 SF	Available 2/1/2027



Suite	Size	Description
■ Suite 501	3,404 - 6,340 SF	Newly Built Space.
■ Suite 502	2,936 - 6,340 SF	705 SCIF Space. Newly Built Space.



Suite	Size	Description
■ Suite 800	4,232 SF	Available Immediately
■ Suite 850	2,746 SF	Available January 2026



# metroplace 1

2650 PARK TOWER DRIVE | VIENNA, VA

**OFFICE LEASING: 703.522.4600**

**METROPLACE1.COM**

---

**DOUG MCLEARN**

dmclearn@lpc.com

703.284.5862

**CORRELL CAULFIELD**

ccaufield@lpc.com

703.284.5886

**Lincoln**