

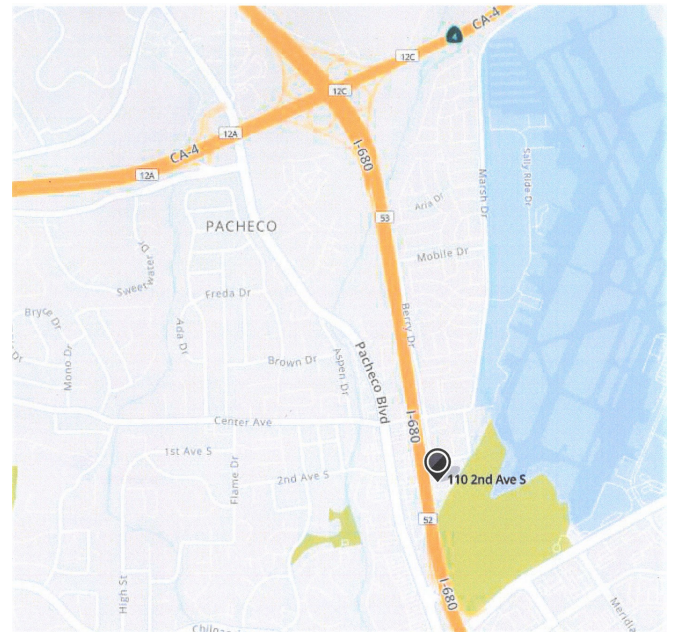
Light Industrial/Commercial FOR LEASE

110 Second Avenue South, Suite A-2
Pacheco, California



Property Information:

- **UNIT FRONTS ON INTERSTATE 680**
- **4,000 +/- RENTABLE SQUARE FEET**
- **RATE: \$1.85 PER MO. INDUSTRIAL GROSS**
- **800 +/- SQUARE FEET OF IMPROVED OFFICE/SHOWROOM AREA WITH HVAC**
- **TWO RESTROOMS, TWO OFFICES, STORE ROOM**
- **POSSIBLE FREEWAY VISIBLE SIGNAGE**
- **ONE GRADE LEVEL 12' X 12' DOOR**
- **200 AMPS OF 120/208 VOLT 3 PHASE**
- **GOOD ACCESS TO HWY 4 AND I-680**



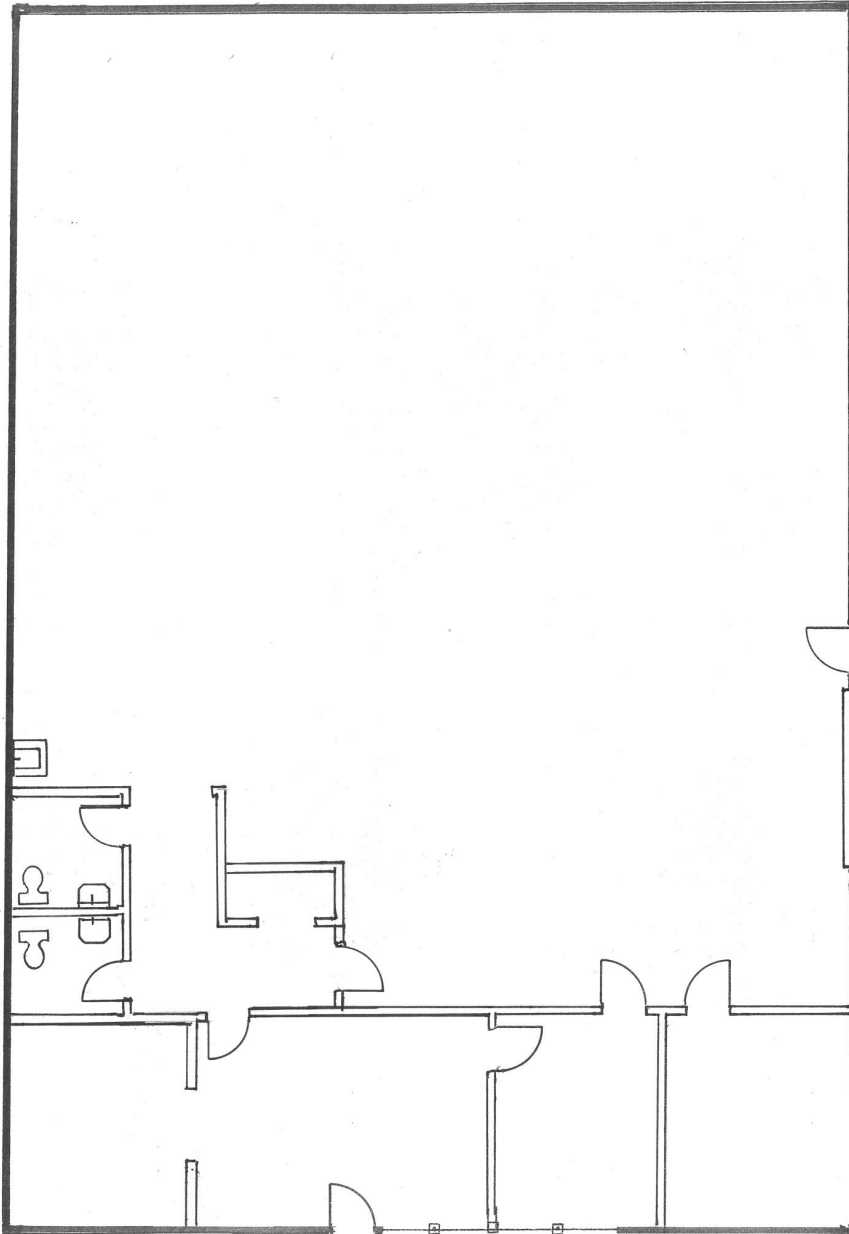
Contact Listing Brokers:

Graham Deutscher
Deutscher Properties Corp
(925) 908-0505
graham@dpccommercial.com
BRE# 01854629

Tom Cranmer
Cranmer Assoc. Inc.
(925) 933-1044
tom@cranmerassociatesinc.com
BRE# 00370734

Deutscher Properties Corp.
370 Civic Drive
Pleasant Hill, CA
Office (925) 676-6166
Fax (925) 676-6177
www.dpccommercial.com

**110 Second Avenue South, Suite A-2,
Pacheco, California – FLOOR PLAN**



Contact Listing Brokers:

Graham Deutscher
Deutscher Properties Corp
CA BRE# 01089011
(925) 908-0505
graham@dpccommercial.com

Tom Cranmer
Cranmer & Assoc., Inc.
CA BRE# 00370734
(925) 933-1044
tom@cranmerassociatesinc.com

Deutscher Properties Corp.
370 Civic Drive
Pleasant Hill, CA
Office (925) 676-6166
Fax (925) 676-6177
www.dpccommercial.com

110 Second Avenue South, Suite A-2, Pacheco, California – SITE PLAN



Contact Listing Brokers:

Graham Deutscher
Deutscher Properties Corp
CA BRE# 01854629
(925) 768-1389
graham@dpccommercial.com

Tom Cranmer
Cranmer & Assoc., Inc.
CA BRE# 00370734
(925) 933-1044
tom@cranmerassociatesinc.com

Deutscher Properties Corp.
370 Civic Drive
Pleasant Hill, CA
Office (925) 676-6166
Fax (925) 676-6177
www.dpccommercial.com