

Beverly Hills 90210

9171 Wilshire Boulevard, Suite 500, Beverly Hills, CA 90210



PRIVATE OFFICES

Highly professional private offices for individuals and teams that are flexible and scaled for growth.

MEETING ROOMS

Spacious, well-appointed meeting rooms with on-site administrative support. Available for an hour, day or longer.

VIRTUAL OFFICES

Establish a business presence with mail handling, phone answering or meeting room time.

ABOUT THIS LOCATION

Welcome to the world-famous 90210 zip-code. This recently opened workspace features new interior amenities that blend natural elements with modern design to create a stunning atmosphere that's professional and welcoming. The 90210 area is well-known for its world-class restaurants, shops, and hotels – all at your fingertips. It's also a short drive away from 405 and 10 Freeways.

CONTACT US

Let's touch base! Contact the on-site General Manager at 310-929-2500 or BH3manager@premierworkspaces.com to schedule a tour.



Beverly Hills 90210

9171 Wilshire Boulevard, Suite 500, Beverly Hills, CA 90210



PREMIER AMENITIES

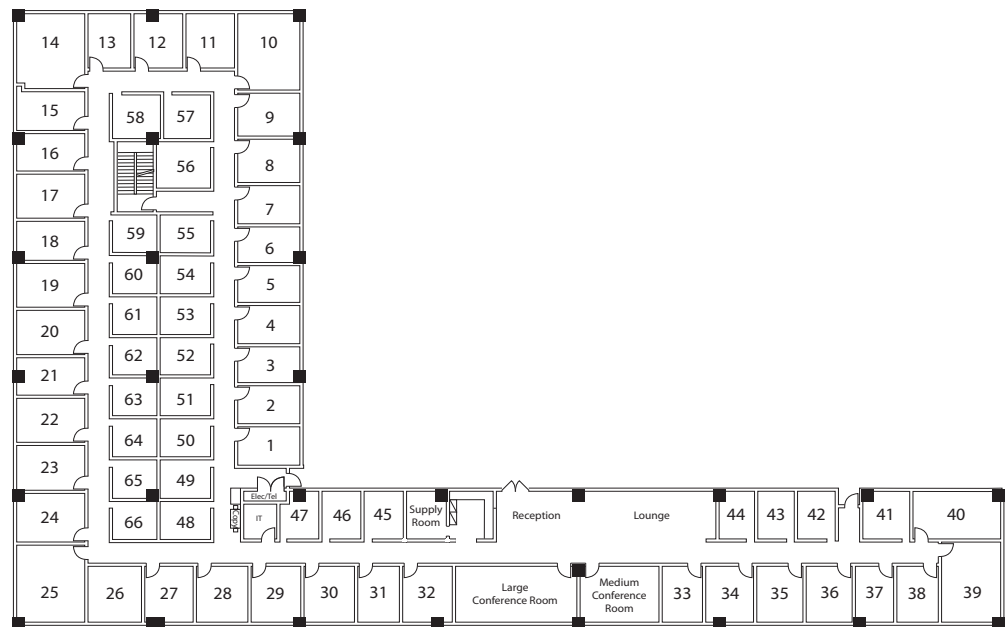
Our private suites can be easily customized to fit your desired aesthetic and brand.

- Private Offices
- Team Rooms
- High Speed Internet
- Telephone Answering
- Mail Collection
- Equipped Kitchen
- Day Offices
- Meeting Rooms
- Daily Janitorial
- Furnished or Unfurnished

PREMIER DIFFERENCE

We've been perfecting the professional workspace for over 17 years.

- Highly-Professional Atmosphere
- On-Site Manager & Support Staff
- Scalable Solutions for Individuals and Teams
- On-Site Billing
- 90+ Locations Nationwide



NEARBY AMENITIES

Beverly Hills is an international business, hospitality, and shopping destination with world-class experiences lurking around every corner. Clients of this location enjoy unprecedented access to the best of Los Angeles – all within walking distance.

Nearby Amenities:

- The Annenberg Center for Performing Arts
- Cedar Sinai Medical Center
- The Beverly Center
- Beverly Hills Garden Park
- Beverly Hills Public Library
- The Sunset Strip
- Two Rodeo Drive
- West Hollywood
- Westfield Century City Plaza

Nearby Transit:

- Freeways – I-405 and the I-10
- Bus – LA Metro
- Santa Monica Blvd & Wilshire Blvd

CONTACT US

Let's touch base! Contact the on-site General Manager at 310-929-2500 or BH3manager@premierworkspaces.com to schedule a tour.