

JOIN THESE RETAILERS



RETAIL FOR LEASE

- 1.7 AC for ground lease with frontage on Lee Rd (20,370 ADT)
- Anchored by Lidl with signalized access
- Shadow anchored by Costco and Target
- Strong daytime employment within excellent trade area
- Delivery Q1 2026

MARKET

CHANTILLY CROSSING

14445 CHANTILLY CROSSING LANE, CHANTILLY, VA 20151, FAIRFAX COUNTY



BO GALLES
bgalles@klnb.com | 703-268-2712

JOSH WEINER
jweiner@klnb.com | 703-268-2715



CHANTILLY CROSSING

14445 CHANTILLY CROSSING LANE, CHANTILLY, VA 20151, FAIRFAX COUNTY



SITE PLAN

CHANTILLY CROSSING

14445 CHANTILLY CROSSING LANE, CHANTILLY, VA 20151, FAIRFAX COUNTY



BO GALLES

bgalles@klnb.com | 703-268-2712

JOSH WEINER

jweiner@klnb.com | 703-268-2715

klnb



Placer.ai
CHANTILLY CROSSING



5.3M
VISITS PER YEAR

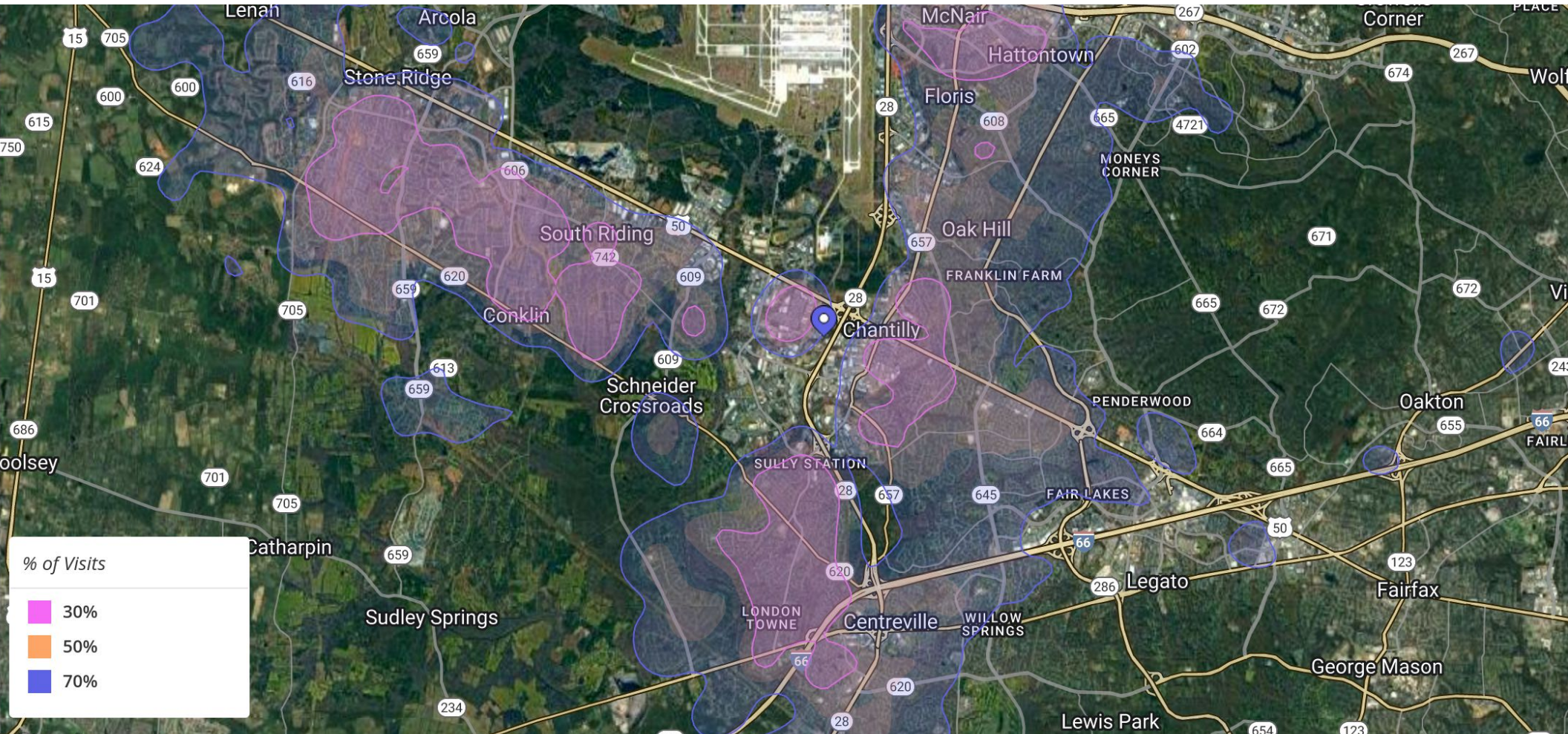


707,600
UNIQUE VISITORS PER YEAR



7.53
VISIT FREQUENCY

DATA IS FROM JANUARY 1, 2023 - DECEMBER 31, 2023



BO GALLES

bgalles@klnb.com | 703-268-2712

JOSH WEINER

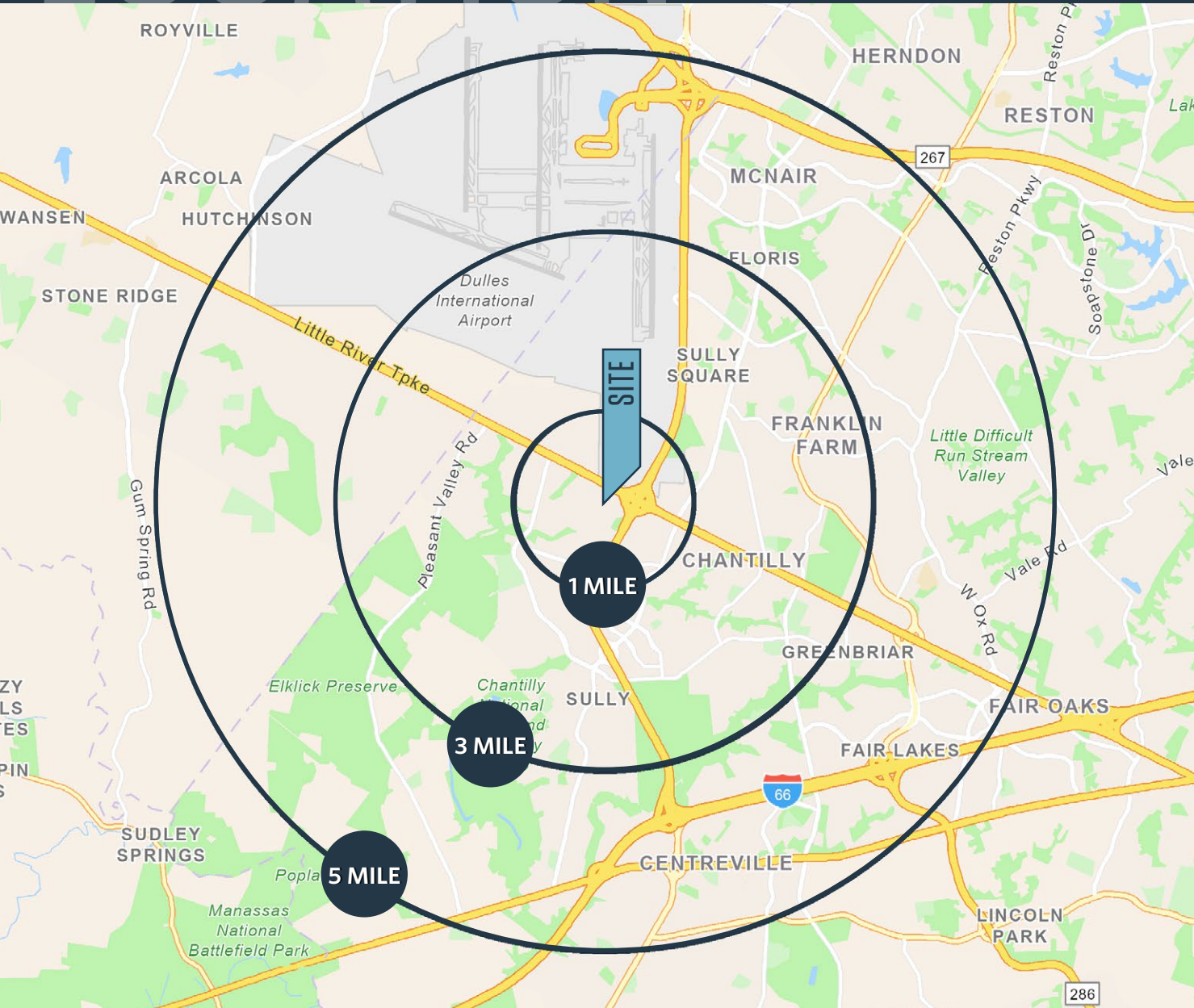
jweiner@klnb.com | 703-268-2715



LOCATION

CHANTILLY CROSSING

14445 CHANTILLY CROSSING LANE, CHANTILLY, VA 20151, FAIRFAX COUNTY



PROPERTY HIGHLIGHTS:

18,000 Square Feet of Retail Space for Lease

DEMOGRAPHICS | 2023:

	1-MILE	3-MILE	5-MILE
Population	2,723	63,750	104,821
Daytime Population	104,821	58,911	140,868
Households	759	20,569	77,950
Average HH Income	\$83,794	\$211,705	\$193,471

[CLICK TO DOWNLOAD DEMOGRAPHIC REPORT](#)

TRAFFIC COUNTS | 2022:

Route 50	71,802 ADT
Lee Rd	20,370 ADT
Route 28	114,955 ADT

BO GALLES

bgalles@klnb.com | 703-268-2712

JOSH WEINER

jweiner@klnb.com | 703-268-2715





CHANTILLY CROSSING

14445 CHANTILLY CROSSING LANE, CHANTILLY, VA 20151, FAIRFAX COUNTY

FOR MORE INFORMATION, PLEASE CONTACT:

BO GALLES

bgalles@klnb.com

703-268-2712

JOSH WEINER

jweiner@klnb.com

703-268-2715

8065 Leesburg Pike, Suite 700, Tysons, VA 22182

.....

klnb.com



[instagram.com/klnbcre](https://www.instagram.com/klnbcre)



[linkedin.com/company/klnb](https://www.linkedin.com/company/klnb)



[facebook.com/KLNBCRE](https://www.facebook.com/KLNBCRE)

CLICK TO VIEW PROPERTY WEBSITE

While we have no reason to doubt the accuracy of any of the information supplied, we cannot, and do not, guarantee its accuracy. All information should be independently verified prior to a purchase or lease of the property. We are not responsible for errors, omissions, misuse, or misinterpretation of information contained herein and make no warranty of any kind, express or implied, with respect to the property or any other matters.