

Available  
Office Space  
in  
Stone Haven  
Business Park

10600  
Trademark  
Parkway  
Suite 400

FOR LEASING  
INFORMATION  
CONTACT:

Carol D. Plowman  
BRE License # 00849369  
909-373-2905

Danielle Parker  
BRE License # 01927503  
909-373-2906

3535 Inland Empire Blvd  
Ontario, CA 91764



Corporate ID# 00976995

# STONE HAVEN BUSINESS PARK

10600 - 10608 Trademark Parkway  
Rancho Cucamonga, CA 91730



## Great Business Park Environment:

- Multi-Tenant Office / Flex Spaces
- Building and Monument Signs Available
- Move-In Ready Suites
- Up to 4:1,000 Parking on Select Units
- Easy Access to Interstate 10 and 15 Freeways
- Near LA-Ontario International Airport, Ontario Mills Mall, and Victoria Gardens



Available  
Office Space  
in  
Stone Haven  
Business Park

10608  
Trademark  
Parkway  
Suite 100  
&  
10600  
Trademark  
Parkway  
Suite 400

FOR LEASING  
INFORMATION  
CONTACT:



Corporate ID# 00976995

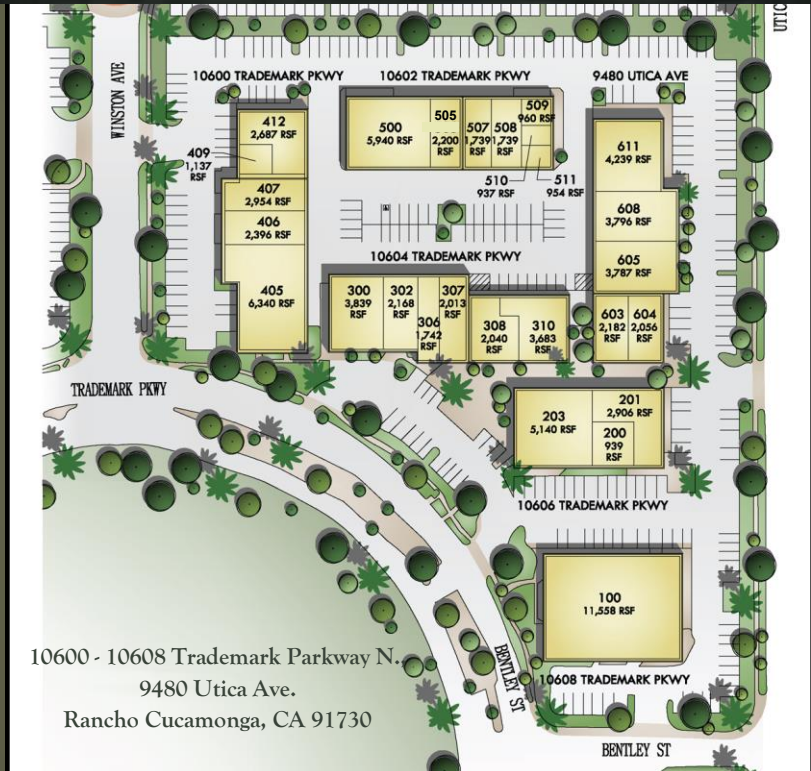
Carol D. Plowman  
BRE License # 00849369  
909-373-2905

Danielle Parker  
BRE License # 01927503  
909-373-2906

3535 Inland Empire Blvd  
Ontario, CA 91764



# STONE HAVEN BUSINESS PARK



## AVAILABILITIES:

STREET ADDRESS	SUITE	±SF	RATE / SF	AVAILABILITY
10600 Trademark Pkwy	400	2,458	\$1.65 *	4/30/2025

Lease Term:

1 – 5 Years

Tenant Improvements:

Negotiable

CAM Fee:

\$0.13 / SF

\* Additional electrical charge of \$.20 PSF

# STONE HAVEN

## BUSINESS PARK

10600  
Trademark  
Parkway  
Suite 400

FOR LEASING  
INFORMATION  
CONTACT:

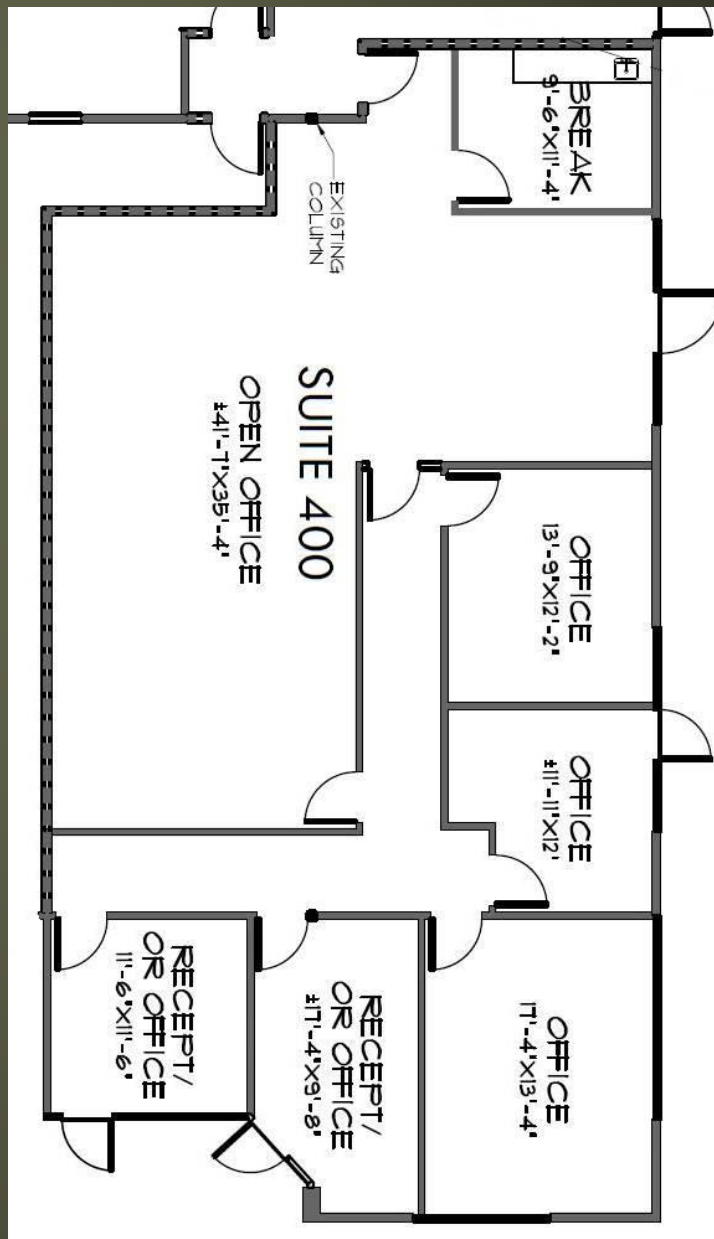


Corporate ID# 00976995

Carol D. Plowman  
BRE License # 00849369  
909-373-2905

Danielle Parker  
BRE License # 01927503  
909-373-2906

3535 Inland Empire Blvd  
Ontario, CA 91764



Suite 400  
± 2,458 SF