



## PROPERTY FEATURES

- » Part of a master planned project
- » HVAC Offices and Private Restrooms
- » Ground Level Warehouse Doors
- » Skylights
- » Fire Sprinkler System
- » Part of an Eleven (11) Building Master Planned Multi-Tenant Project
- » Great Location with Easy Freeway Access to the 405 Freeway
- » Abundant Retail Amenities Close to the Property

## LOCATION MAP

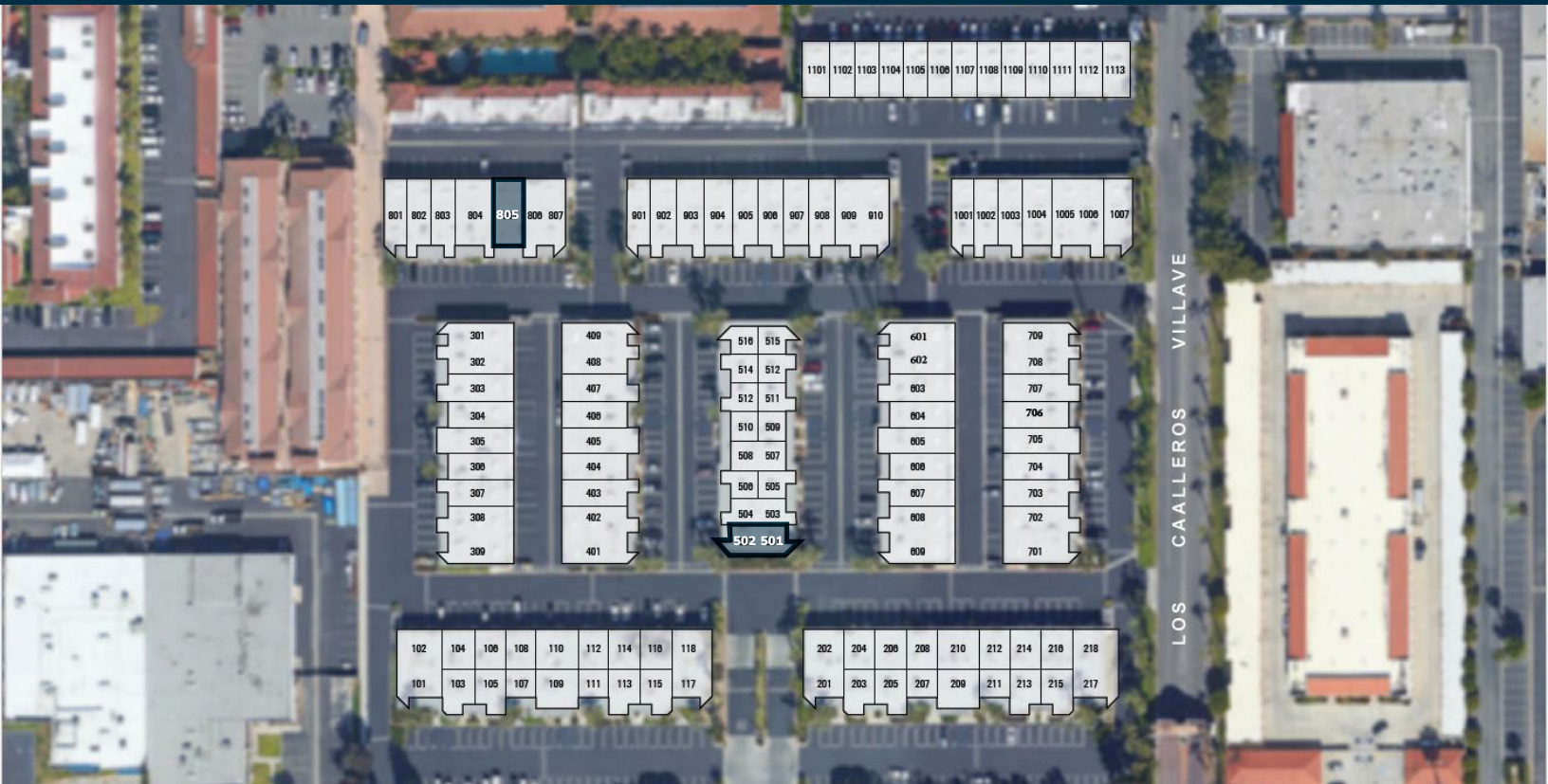


**CHRIS COYTE**  
ccoyle@lee-assoc.com  
D 909.373.2935  
DRE #01017328

**JOHN MARTIN**  
jmartin@lee-assoc.com  
D 714.307.1250  
DRE #01346629

LEE & ASSOCIATES - ONTARIO  
3535 Inland Empire Boulevard | Ontario, CA 91764  
(909) 989-7771 | lee-associates.com  
Corporate ID: 00976995

**LEE & ASSOCIATES**  
COMMERCIAL REAL ESTATE SERVICES



**CURRENT AVAILABILITY**

ADDRESS	UNIT	UNIT SIZE	OFFICE SIZE	OFFICE(S)	REST-ROOMS	GL DOOR	DATE AVAIL.	RATE
17150 Newhope Street	501-502	±1,618 SF	±1,618 SF	3	1	0	Now	\$1.65 G + \$.08 CAM
17150 Newhope Street	805	±1,340 SF	400 SF	2	1	1	Now	\$1.65 G + \$.08 CAM

**CHRIS COYTE**  
 ccoyte@lee-assoc.com  
 D 909.373.2935  
 DRE #01017328

**JOHN MARTIN**  
 jmartin@lee-assoc.com  
 D 714.307.1250  
 DRE #01346629

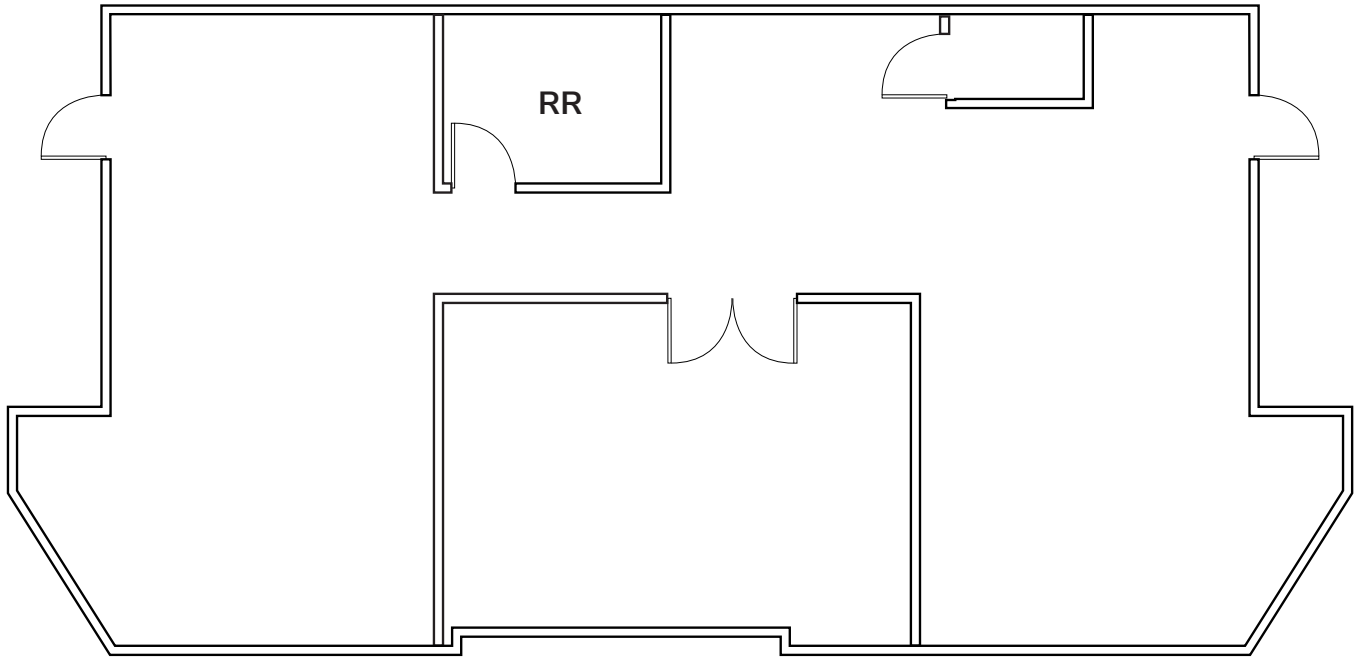
LEE & ASSOCIATES - ONTARIO  
 3535 Inland Empire Boulevard | Ontario, CA 91764  
 (909) 989-7771 | lee-associates.com  
 Corporate ID: 00976995



DISCLAIMER: The information contained herein has been obtained from the property owner or other third party and is provided to you without verification as to accuracy. We (Lee & Associates, its brokers, employees, agents, principals, officers, directors and affiliates) make no warranty or representation regarding the information, property, or transaction. You and your attorneys, advisors and consultants should conduct your own investigation of the property and transaction.

17150 Newhope Street, Unit 501-502

---



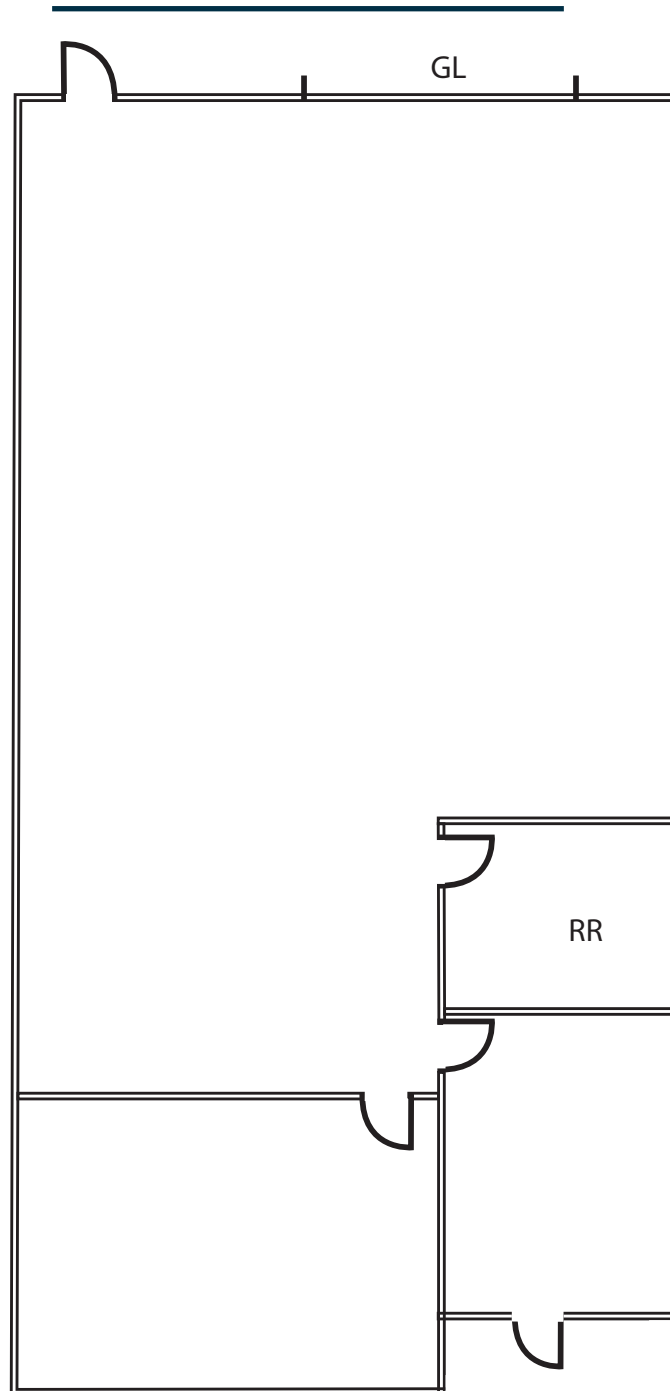
**CHRIS COYTE**  
ccoyle@lee-assoc.com  
D 909.373.2935  
DRE #01017328

**JOHN MARTIN**  
jmartin@lee-assoc.com  
D 714.307.1250  
DRE #01346629

LEE & ASSOCIATES - ONTARIO  
3535 Inland Empire Boulevard | Ontario, CA 91764  
(909) 989-7771 | lee-associates.com  
Corporate ID: 00976995



17150 Newhope Street, Unit 805



**CHRIS COYTE**  
ccoyle@lee-assoc.com  
D 909.373.2935  
DRE #01017328

**JOHN MARTIN**  
jmartin@lee-assoc.com  
D 714.307.1250  
DRE #01346629

LEE & ASSOCIATES - ONTARIO  
3535 Inland Empire Boulevard | Ontario, CA 91764  
(909) 989-7771 | lee-associates.com  
Corporate ID: 00976995

