

Workplace Co.

19-20 GREAT SUTTON STREET

FARRINGDON, LONDON, EC1V 0DR

THEWORKPLACECOMPANY.CO.UK | 020 7993 8075



19-20 GREAT SUTTON STREET

Fully fitted office space with 18 desks, 2 meeting rooms and a kitchenette along with breakout space. The office benefits from 2 demised WC's and a shower on the same floor. The property has triple aspect natural light from all sides of the property creating a brilliant working environment.

Available by **sublease** until January 2028

Floor	SQFT	Rent	Rates	Service	£ Monthly	£ Annually
3rd	1,400	£55	£5.70	£17	£9,065	£108,780

Key Features

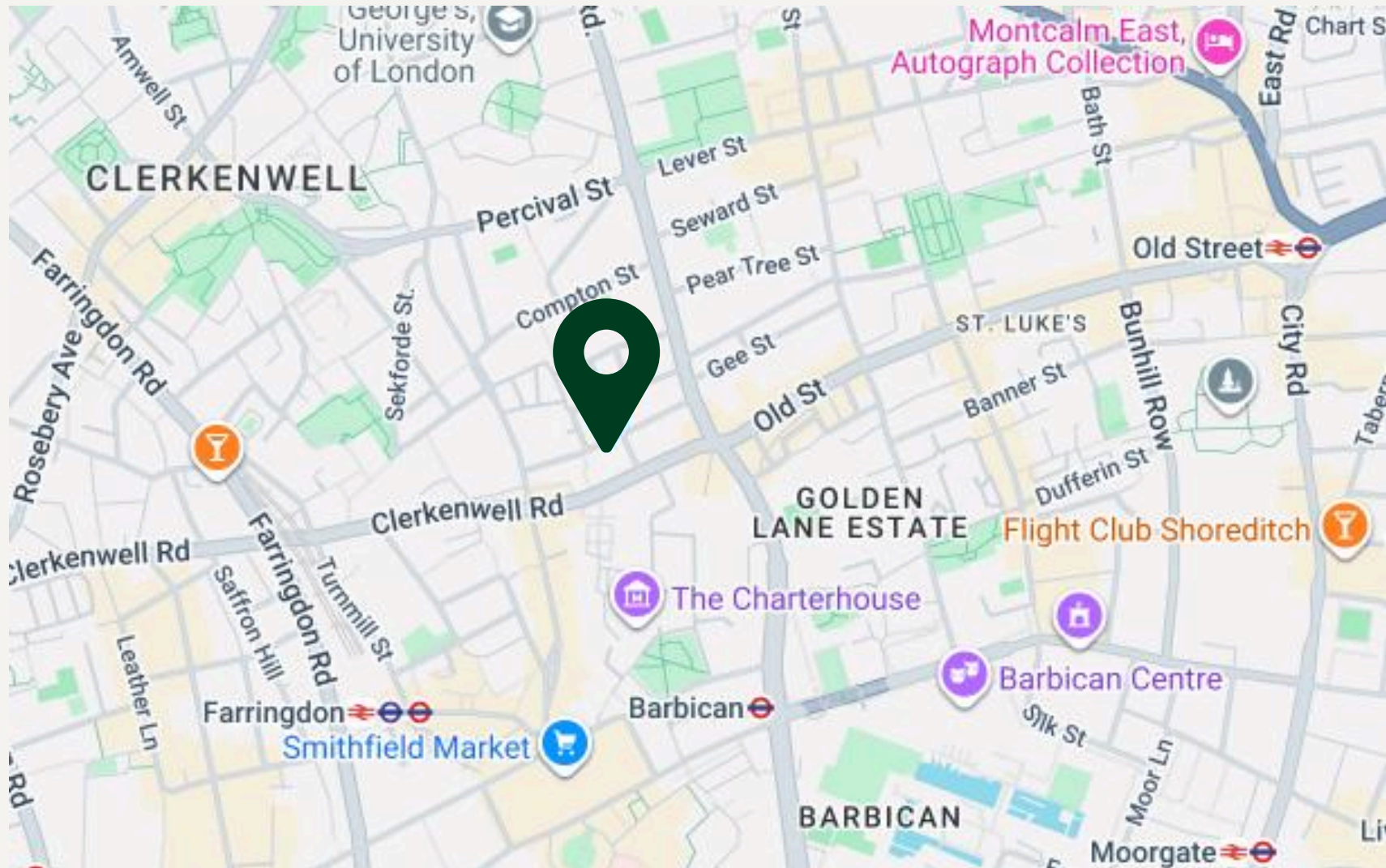
- Fully Fitted
- Shower
- Meeting Rooms
- CAT A+
- Great Natural Light
- Kitchenette
- Wooden Flooring
- Air Conditioning
- Fibre

Nearby Stations

-  Barbican (7 mins walk)
-  Farringdon (8 mins walk)
-  Old Street (13 mins walk)

19-20 GREAT SUTTON STREET

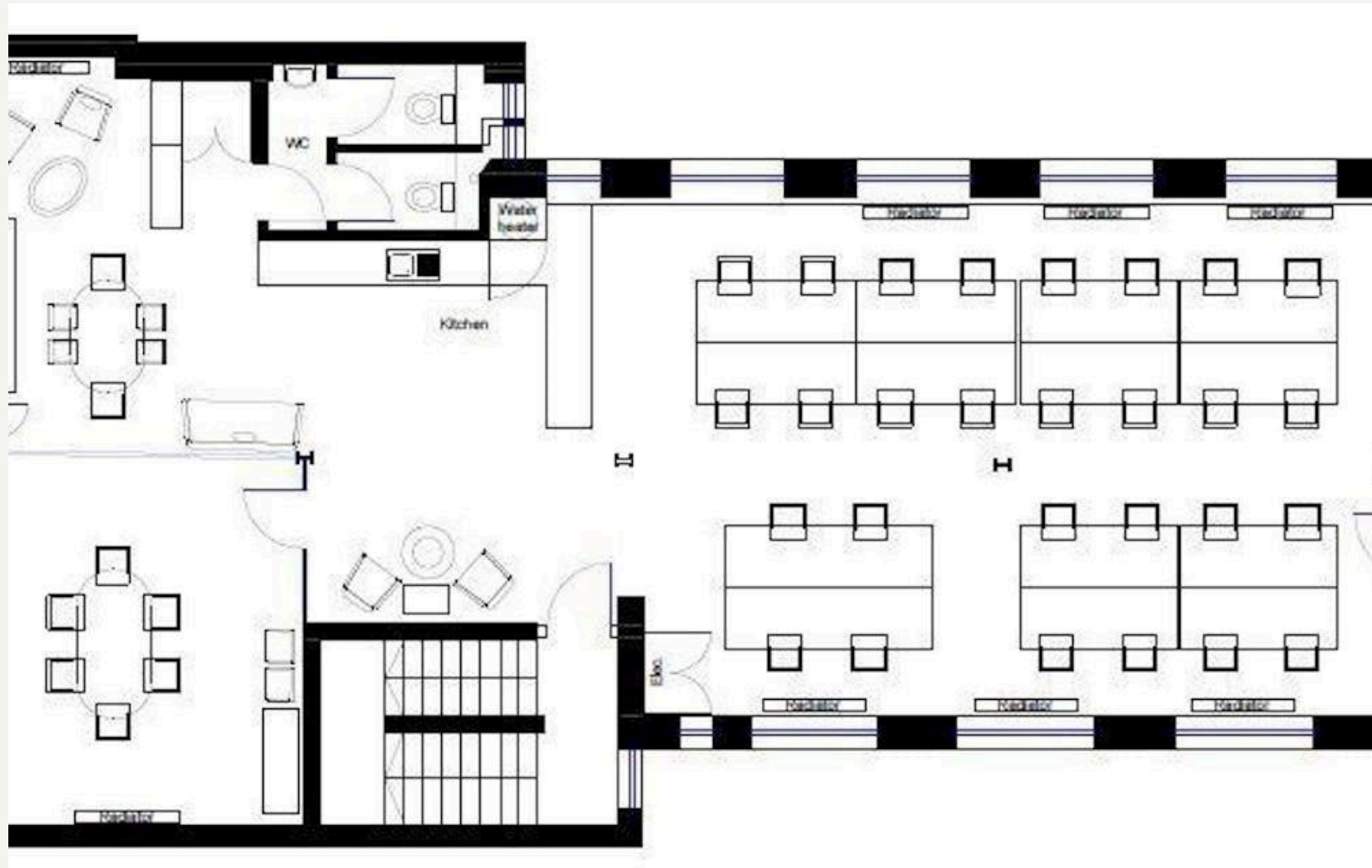
The office is located moments away from Farringdon and Barbican Station, surrounding the property are plenty of amenities such as cafe's, bars and restaurants.



GALLERY



FLOOR PLAN



Workplace Co.

VIEWINGS

Lisa Moran MRICS - Partner

DD: 02079938075 / **M:** 07808073959

E: lm@theworkplacecompany.co.uk

THEWORKPLACECOMPANY.CO.UK | 020 7993 8075

Misrepresentation Act 1967: These particulars are believed to be correct but their accuracy is not guaranteed and they do not form part of any contract. Unless otherwise stated, all prices and rents are quoted exclusive of VAT