

FOR SALE

2010 W LINCOLN AVE, ANAHEIM, CA92801

10-UNIT COMMERCIAL BUILDING

OFFERED AT **\$2,400,000**



EXCLUSIVELY LISTED BY:



N H U W H I T E

Phone : (949) 216 - 0888

Website : www.nhuwhite.com

Email : realtor@nhuwhite.com

DRE# : 02100195

Broker: Frontier Realty Inc

DRE# : 02073454



NHU WHITE

(949) 216 - 0888

Realtor@nhuwhite.com

DRE#02073454/02100195



INVESTMENT HIGHLIGHTS

- **Prime High-Traffic Anaheim Location:** positioned on W Lincoln Ave with approximately 30,000 vehicles per day.
- **Two Separate Buildings totaling 6,912 SF on a single 17,424 SF lot,** offering layout flexibility and diversified income.
- **Strong & Stable Cash Flow with 9 of 10 units occupied,** providing immediate income with significant upside through lease-up.
- **Ample On-Site Parking with 22 dedicated spaces,** a rare and valuable asset for tenants and customers.
- **Exceptional Freeway Access moments from both I-5 and SR-91** ensuring unmatched regional visibility and ease of access.
- **Ideal for a Diversified Tenant Mix,** perfectly suited for retail, restaurants, medical offices, services, or professional use.
- **High-Visibility Presence** offers premium signage opportunities and multiple points of access.
- **Positioned in a Dense West Anaheim Trade Area** surrounded by established neighborhoods with consistent daily demand.



NHU WHITE

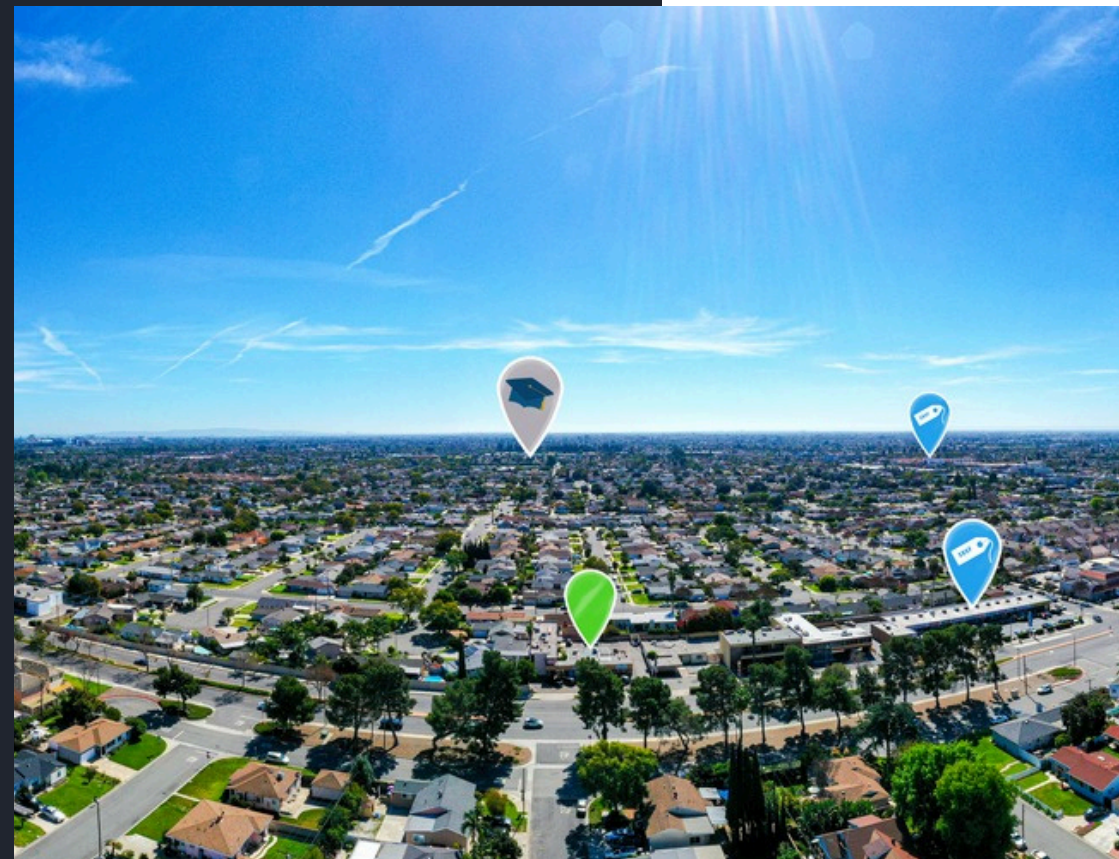
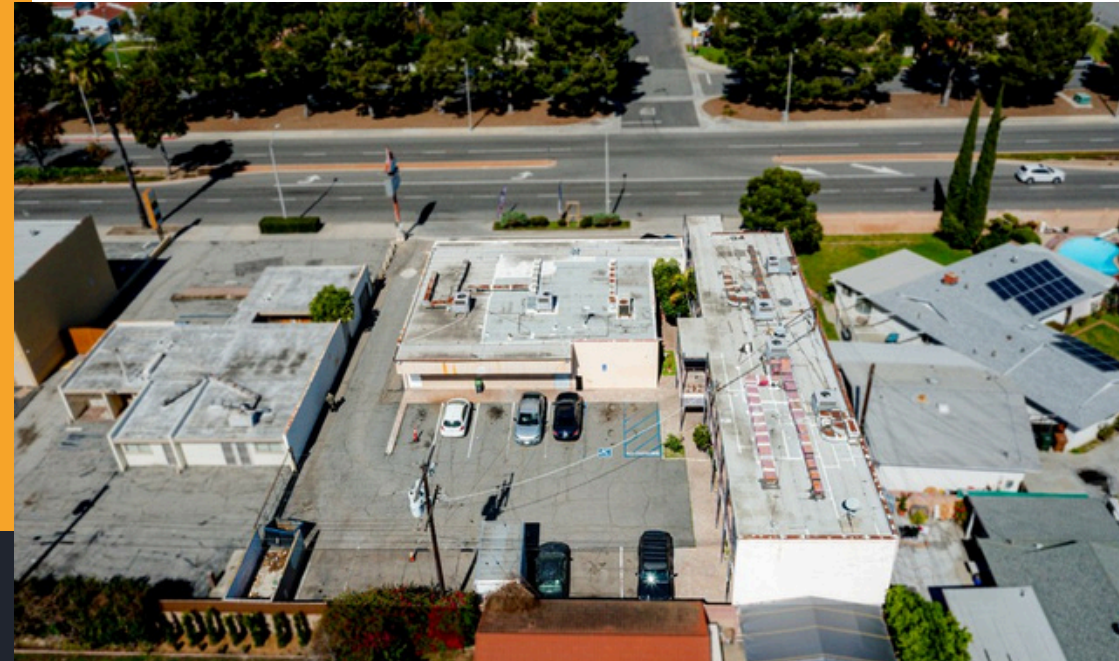
(949) 216 - 0888

Realtor@nhuwhite.com

DRE#02073454/02100195



INVESTMENT SUMMARY



ADDRESS	2010 W LINCOLN AVE, ANAHEIM, CA 92801
BUILDING SIZE	6,912 SF
PARCEL SIZE	0.40 ACRE
ZONING	C-G
APN	12803114
YEAR BUILT	1962
PARKING	22
NUMBER OF UNITS	10
TRAFFIC COUNTS	30,000 Vehicles/Day

NHU WHITE

(949) 216 - 0888

Realtor@nhuwhite.com

DRE#02073454/02100195



LEASE SUMMARY

TENANT	UNIT	COMMENCEMENT	EXPIRATION DATE	ANNUAL INCREASES	MONTHLY +NNN	PRO FORMA
ADO NUTRITION	#2010	05/01/2025	05/01/2030	5%	\$1,800.00	\$1,800.00
VMV PARTY RENTAL	#2006	12/15/2024	12/15/2027	3%	\$2,800.00	\$2,800.00
MAY BEAUTY SALON	#203 & #204	05/04/2025	05/04/2027	5%	\$2,000.00	\$2,100.00
AUTO PARTS	#101 & #102	03/08/2025	MONTH TO MONTH	5%	\$2,200.00	\$2,200.00
BARBERSHOP	#103	07/01/2024	06/30/2026	3-5%	\$850.00	\$850.00
T-SHIRT SHOP	#104	03/15/2025	MONTH TO MONTH	5%	\$600.00	\$600.00
CONTRACTOR	#103	06/01/2026	05/31/2027		\$900.00	\$900.00
VACANT						\$1,800.00

FINANCIAL OVERVIEW

PROPERTY TAX	\$25,838.91
INSURANCE	\$5,909.15
CLEANING SERVICE	\$1,200.00
ESTIMATED GROSS INCOME	\$155,400.00
ESTIMATED NET OPERATING INCOME	\$122,451.94
ESTIMATED CAP RATE	5.10 %

** Tentants pay utilities



NHU WHITE

(949) 216 - 0888

Realtor@nhuwhite.com

DRE#02073454/02100195



PROPERTY PHOTOS



NHU WHITE

(949) 216 - 0888

Realtor@nhuwhite.com

DRE#02073454/02100195



No warranty or representation is made to the accuracy of the foregoing information.

PROPERTY PHOTOS



NHU WHITE

(949) 216 - 0888

Realtor@nhuwhite.com

DRE#02073454/02100195



No warranty or representation is made to the accuracy of the foregoing information.

PROPERTY PHOTOS



NHU WHITE
(949) 216 - 0888
Realtor@nhuwhite.com
DRE#02073454/02100195



No warranty or representation is made to the accuracy of the foregoing information.

PROPERTY PHOTOS

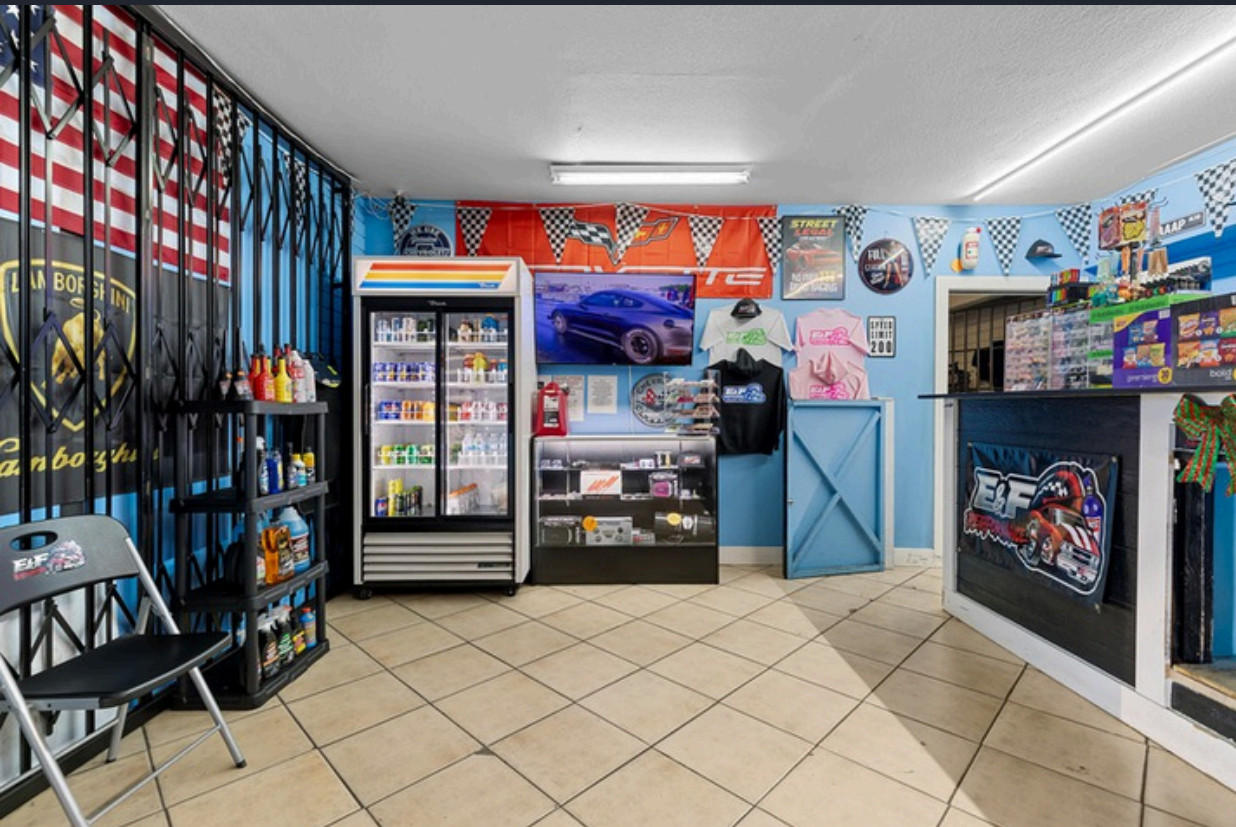


NHU WHITE
(949) 216 - 0888
Realtor@nhuwhite.com
DRE#02073454/02100195



No warranty or representation is made to the accuracy of the foregoing information.

PROPERTY PHOTOS



NHU WHITE

(949) 216 - 0888

Realtor@nhuwhite.com

DRE#02073454/02100195



No warranty or representation is made to the accuracy of the foregoing information.

PROPERTY PHOTOS



NHU WHITE
(949) 216 - 0888
Realtor@nhuwhite.com
DRE#02073454/02100195



No warranty or representation is made to the accuracy of the foregoing information.

PROPERTY PHOTOS



NHU WHITE

(949) 216 - 0888

Realtor@nhuwhite.com

DRE#02073454/02100195



No warranty or representation is made to the accuracy of the foregoing information.



ANAHEIM OVERVIEW

As of mid-2025, Anaheim, CA, stands as a premier commercial investment destination, offering a rare combination of massive tourism-driven foot traffic, a robust and diversified local economy, and unparalleled multi-modal transportation access. Far more than just its world-famous Resort District, Anaheim is a dynamic, large-scale city that functions as a major employment hub and a critical logistics and manufacturing center for Southern California.

The city's strategic positioning at the convergence of the I-5, SR-91, SR-57, and SR-22 freeways provides unmatched regional connectivity, placing it within a short drive of over 10 million people across Orange, Los Angeles, Riverside, and San Bernardino counties. This infrastructure supports not only the influx of over 20 million annual visitors but also facilitates efficient goods movement and commuter access for a large and diverse workforce.

Anaheim's commercial landscape is powerfully bifurcated, offering distinct and compelling opportunities:

The Resort District & Platinum Triangle: A high-density, high-dollar environment dominated by hospitality, entertainment, conference space, and luxury residential. Demand here is driven by tourism, supporting premium retail, experiential dining, and hospitality-support services.

The Industrial & Logistics Corridors: Particularly in West Anaheim, the city boasts a critical mass of manufacturing, warehousing, and distribution facilities, benefiting from its central location and freeway network. This sector provides a stable base of B2B and industrial tenancy.

Established Neighborhood Retail Corridors: Arterial streets like Lincoln Ave, Ball Rd, and Katella Ave are vibrant, well-trafficked corridors serving the city's dense residential rooftops. These areas exhibit strong, consistent demand for daily-needs retail, medical services, personal care, and quick-service restaurants.

From an investment perspective, Anaheim appeals to a broad spectrum of capital, from institutional investors targeting trophy assets in the Resort Area to private buyers seeking value-add opportunities in well-located strip centers or functional industrial assets. The city's economic diversity acts as a hedge against sector-specific downturns. With a constrained supply of developable land and a pro-business city government actively encouraging investment, well-located properties with strong ingress/egress, clear signage, and functional parking are positioned to capture strong tenant interest and rental rate appreciation.

Looking ahead, Anaheim's fundamentals are strengthened by continuous reinvestment in its public infrastructure and iconic attractions, ensuring its status as a perpetual draw for people, capital, and commerce. The sustained demand from both the captive tourist population and the essential local market creates a compelling case for long-term investment in this core Orange County market.

NHU WHITE

(949) 216 - 0888

Realtor@nhuwhite.com

DRE#02073454/02100195



CONFIDENTIALITY AGREEMENT & DISCLAIMER

The information contained in this offering memorandum is proprietary and strictly confidential. It is intended to be reviewed only by the party receiving it from Nhu White Realty and should not be made available to any other person or entity without the written consent of Nhu White Realty. This offering memorandum has been prepared to provide summary, unverified information to prospective purchasers, and to establish only a preliminary level of interest in the subject property. The information contained herein is not a substitute for a thorough due diligence investigation. Nhu White Realty has not made any investigation, and makes no warranty or representation, with respect to the income or expenses for the subject property, the future projected financial performance of the property, the size and square footage of the property and improvements, the presence or absence of contaminating substances, PCB's or asbestos, the compliance with State and Federal regulations, the physical condition of the improvements thereon, or the financial condition or business prospects of any tenant, or any tenant's plans or intentions to continue its occupancy of the subject property. The information contained in this offering memorandum has been obtained from sources we believe to be reliable; however, Nhu White Realty has not verified, and will not verify, any of the information contained herein, nor has Nhu White Realty conducted any investigation regarding these matters and makes no warranty or representation whatsoever regarding the accuracy or completeness of the information provided. All potential buyers must take appropriate measures to verify all of the information set forth herein.

NON-ENDORSEMENT NOTICE

Nhu White Realty is not affiliated with, sponsored by, or endorsed by any commercial tenant or lessee identified in this offering memorandum. The presence of any corporation's logo or name is not intended to indicate or imply affiliation with, or sponsorship or endorsement by, said corporation of Nhu White Realty, its affiliates or subsidiaries, or any agent, product, service, or commercial listing of Nhu White Realty, and is solely included for the purpose of providing tenant lessee information about this listing to prospective customers.

NHU WHITE

(949) 216 - 0888

Realtor@nhuwhite.com

DRE#02073454/02100195

