

Restaurant Space For Lease

3079 Route 27, Franklin Park, New Jersey 08823



PROPERTY FEATURES

- **3,928 SF Available**
- **Turn-Key Restaurant, Renovated in 2019**
- **Total Capacity of 200**
- **Join Anchors IHOP & Davita Dialysis Center**

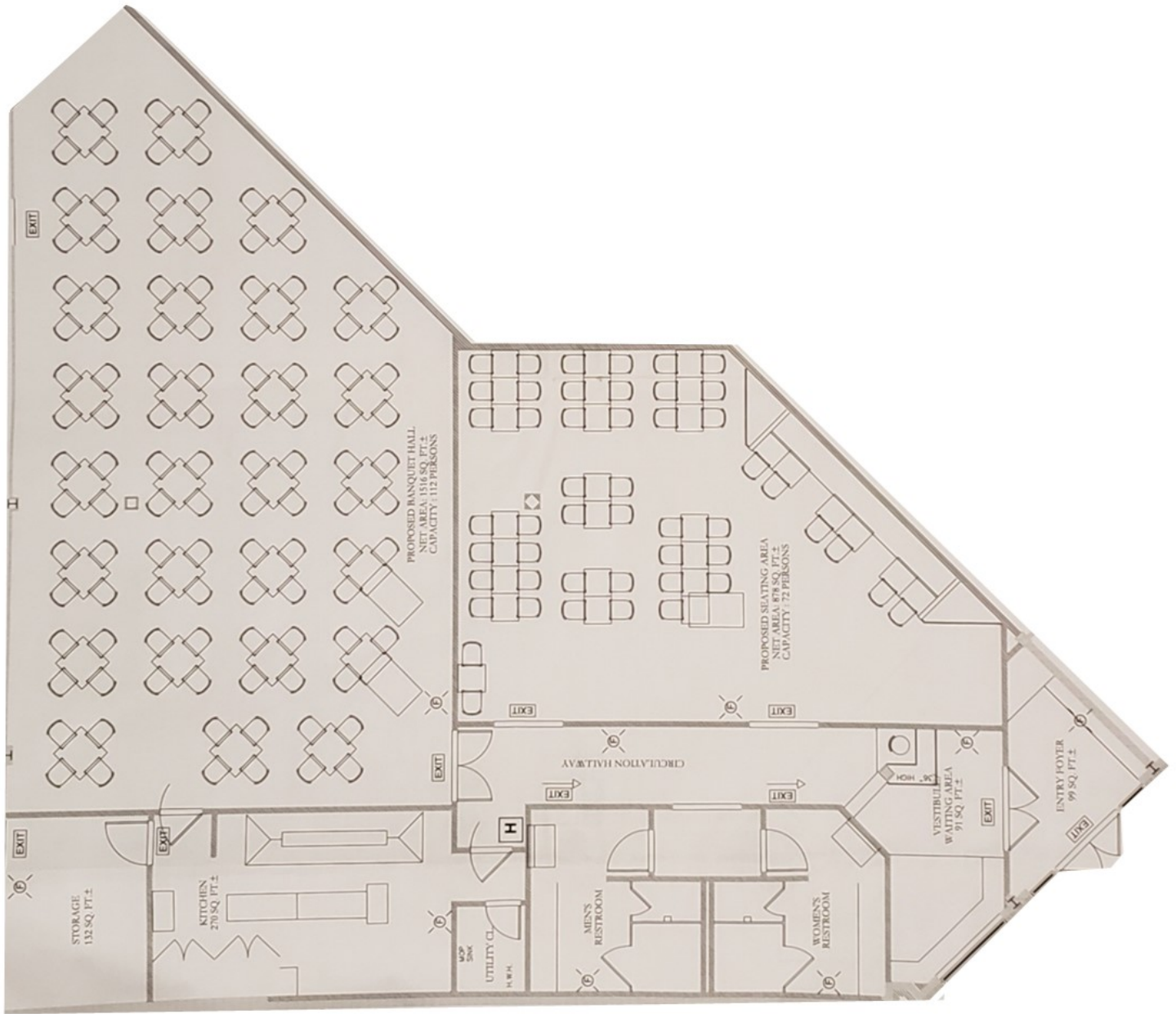
DEMOGRAPHIC INFORMATION	1 Mile	3 Miles	5 Miles
2016 Population	15,792	54,620	125,737
2016 Households	6,114	19,705	43,857
2016 Avg. HH Income	\$107,903	\$112,719	\$114,036
Traffic Count +/-	30,000 Vehicles Per Day		

Asking \$22.00 NNN

For Further Information Please Contact Exclusive Broker:

Lance Bram
COMMERCIAL BROKERAGE

Joe D'Agostino
732.545.1850 x17
732.690.6339 Cell
joe@lancebram.com



For Further Information Please Contact Exclusive Broker:

Lance Bram
COMMERCIAL BROKERAGE

Joe D'Agostino
732.545.1850 Ext 17
732.690.6339 Cell
joe@lancebram.com

The information contained herein has been given to us by the owner of the property or other sources we deem reliable, we have no reason to doubt its accuracy, but we do not guarantee it. All information should be verified prior to purchase or lease.