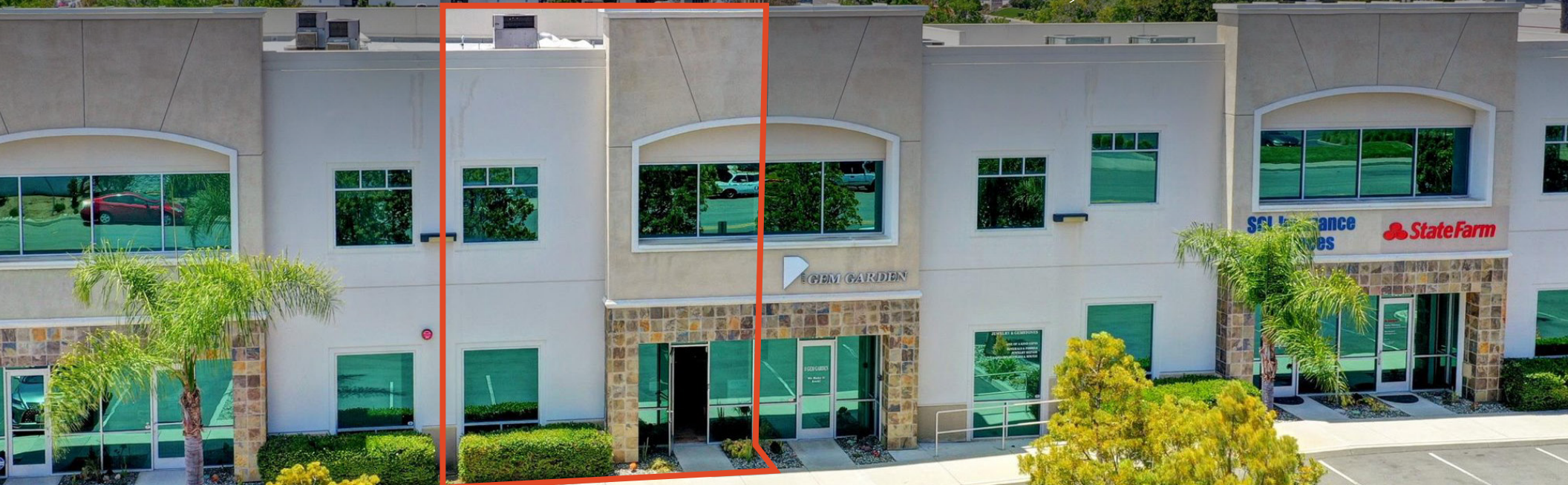


250 S PACIFIC ST / STE 106

FLEX CONDO FOR LEASE

*2,950 RSF Suite Ideal for Retail,
Office, & Small Warehouse Uses
in San Marcos, CA*



EXCLUSIVELY LEASED BY

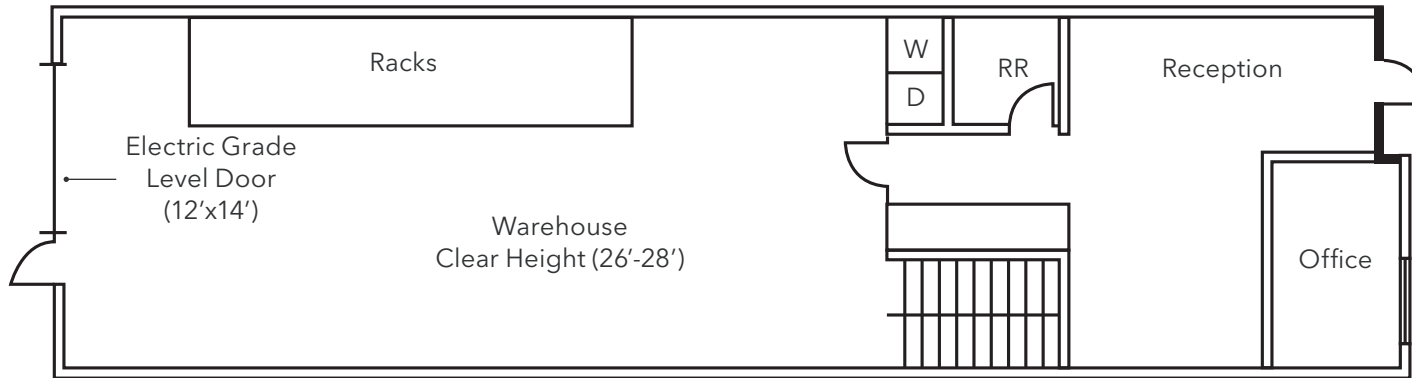


High-image suite with abundant skylights, high-bay warehouse lights & loading features with proximity to CA-78.

ADDRESS	250 S Pacific St San Marcos, CA 92078
AVAILABLE RENTABLE SF	2,950 SF
STORIES	2
TYPE	Flex Condo
LOT SIZE	1.13 AC
ZONING	L1
LOADING	Electric over sized grade level roll up (12x14)
WAREHOUSE AMENITIES	<ul style="list-style-type: none">• Racks included• Viking appliances• Fully Fixturized
CLEAR HEIGHT	26'-28'
PARKING	Ample

FLOOR PLAN

First Floor



2,950 RSF

AVAILABLE

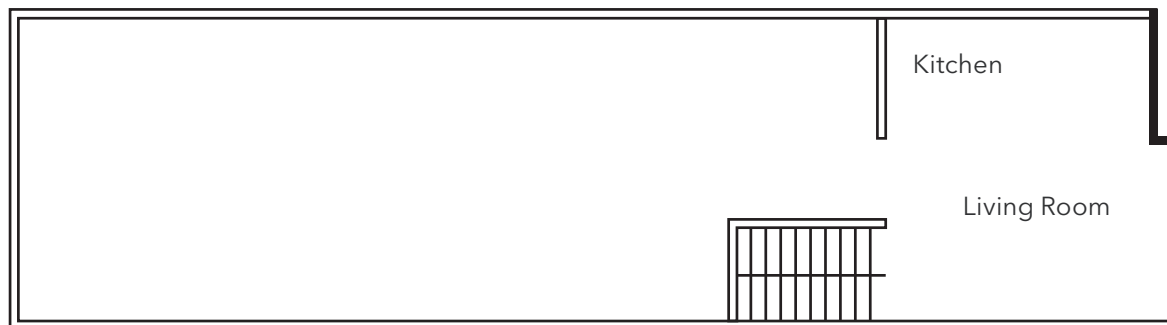
26'-28'

CLEAR HEIGHT

\$1.60/NNN

LEASE RATE (RSF/MO)

Mezzanine



NOW

AVAILABLE

Approximately 1,000 SF office,
open warehouse, and grade
level loading

Not to scale.

AVAILABLE FOR LEASE

KIDDER MATHEWS

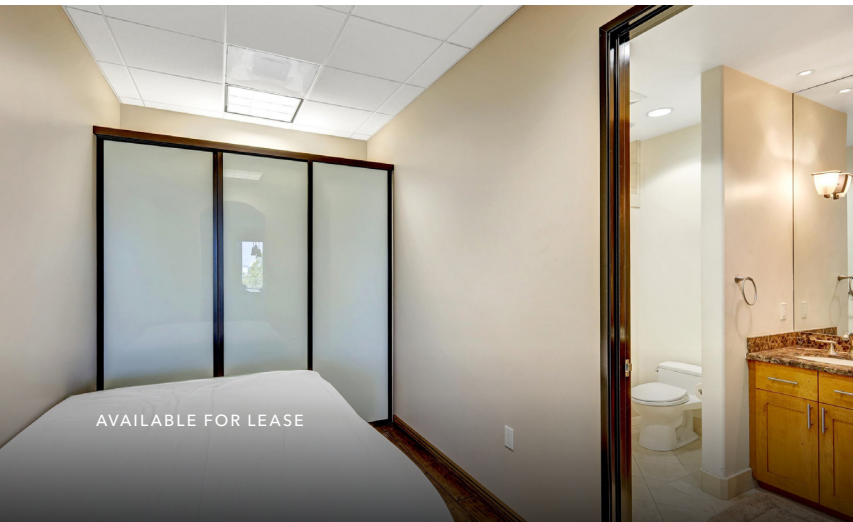




250 S PACIFIC ST | STE 106



250 S PACIFIC ST | STE 106



AVAILABLE FOR LEASE



KIDDER MATHEWS

HIGHLY- ACCESSIBLE LOCATION

Close to McClellan-Palomar Airport

Conveniently located near major
confluences Highway-78 and Interstate-5

Easy for visitors to locate

Surrounded by San Marcos' premier
industrial & commercial hub

2 MIN

CALIFORNIA 78
VIA S RANCHO
SANTA FE RD

14 MIN

MCCLELLAN-
PALOMAR AIRPORT



250 S PACIFIC ST | STE 106



PM
OLE/OLE

*Exclusively
listed by*

TODD DAVIS, SIOR, CCIM
Kidder Mathews
760.430.1000
todd.davis@kidder.com
LIC N° 01383147

KIDDER.COM

This information supplied herein is from sources we deem reliable. It is provided without any representation, warranty, or guarantee, expressed or implied as to its accuracy. Prospective Buyer or Tenant should conduct an independent investigation and verification of all matters deemed to be material, including, but not limited to, statements of income and expenses. Consult your attorney, accountant, or other professional advisor. All Kidder Mathews designs are the sole property of Kidder Mathews. Branded materials and layouts are not authorized for use by any other firm or person.

km Kidder
Mathews