

HOFFNER FULFILLMENT CENTER

6210 HOFFNER AVENUE, ORLANDO, FL 32822



**CONVENIENT ACCESS
TO SR 528 AND MCO**

**23,992 SF AVAILABLE
FOR LEASE**

SPACE HIGHLIGHTS

ASKING RATE
NEGOTIABLE

OPEX*
\$4.74 PSF

ELECTRICAL SPECS
3-PHASE

WAREHOUSE SF
21,209 SF

OFFICE SF
2,783 SF

ZONING
IND-1/IND-5

CLEAR HEIGHT
32'

YEAR BUILT
2019

AVAILABILITY
IMMEDIATELY

LOADING DOORS
(10) DOCK DOORS
(1) RAMP

**Denotes Estimated Operating Expenses for 2026*

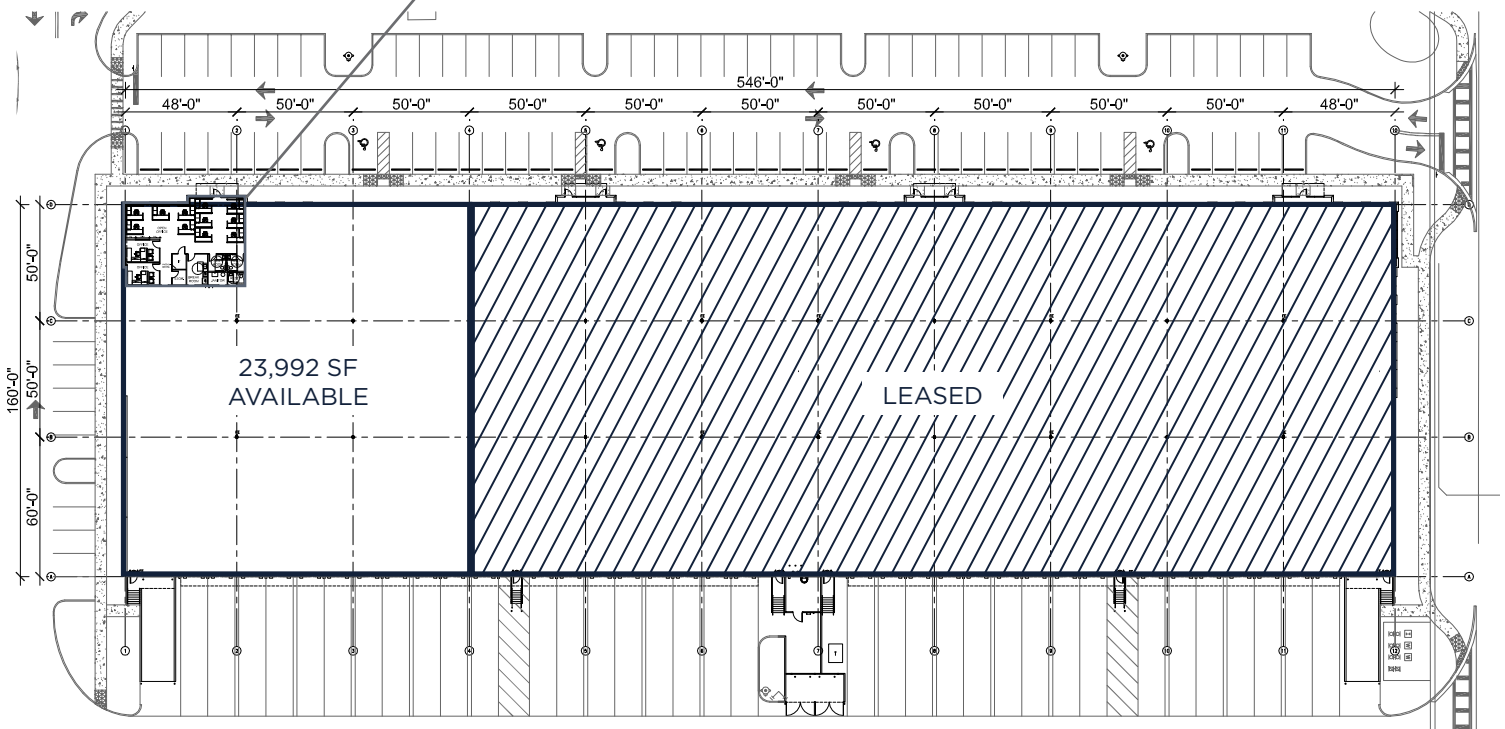
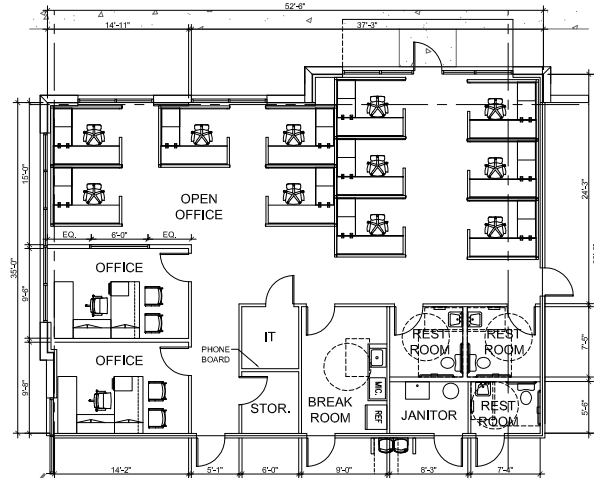
CONTACT INFORMATION

TAYLOR ZAMBITO
Senior Director
+1 407 541 4409
taylor.zambito@cushwake.com

RYAN HUBBARD
Director
+1 407 541 4390
ryan.hubbard@cushwake.com



6210 HOFFNER AVENUE SUITE 100



CONTACT INFORMATION

TAYLOR ZAMBITO

Senior Director
+1 407 541 4409
taylor.zambito@cushwake.com

RYAN HUBBARD

Director
+1 407 541 4390
ryan.hubbard@cushwake.com

