

99

SOUTH
BEDFORD
STREET

20

BLANCHARD
ROAD



BURLINGTON • MA

6,412 - 74,198 RSF

Sublease
Available



ISO 8-5
Clean Rooms



AMPLE
Power



AVAILABLE
Immediately



PRICING
Negotiable



TERM
Flexible



LIFETIME

Burlington Square
I, II, & III

GOLF GALAXY
DULUTH TRADING

Staples
Orangetheory FITNESS
Visionworks
SUPERCUTS

UPS

Wayside Commons

Wegmans
KINGS
REDSTONE
ARCHER BURLINGTON

Burlington Mall

Apple
macy's
NORDSTROM
Crate&Barrel
PRIMARK
sweetgreen
The Cheesecake Factory

Burlington Marketplace

Starbucks
CHIPOTLE
pure barre
FedEx

Beth Israel Lahey Health

Mercedes-Benz

MARRIOTT

PORSCHE

KOHL'S

CHASE

99 SOUTH BEDFORD STREET

Burlington Crossroads

Target
Total Wine & More
Marshalls
Michaels
five BELOW
Panera BREAD
CVS pharmacy

DUNKIN'

HONDA

Burlington Mall Rd

Residence INN BY MARRIOTT

S Bedford St

Bedford Rd

Eddie V's

extended STAY AMERICA

Keurig DrPepper

amc

Middlesex Turnpike

Interstate 95
3

ORACLE

Wayside Commons

BARNES & NOBLE
EASTERN MOUNTAIN SPORTS
BUFFALO WILD WINGS
Yard House
BURGER KING
Visionworks

20 BLANCHARD

DUNKIN'

Hilton Garden Inn

McDonald's

LOFT
THE CAPITAL GRILL
Starbucks
YOUR JOE'S KITCHEN & BAR
EUROPEAN WAX CENTER
JARED

LL.Bean
Seasons 52 FRESH GRILL | WINE BAR
carter's
TALBOTS
LANE BRYANT
POTBELLY SANDWICH SHOP
COLD STONE CREAMERY

ME Massage Envy

MILLIPORE SIGMA

TRADER JOE'S
BED BATH & BEYOND
petco

Cambridge Rd

Site Layout



99 South Bedford Street

Suite 1	Client Hosting
Suite 2	Manufacturing/Lab Voltage: 120V/208V 3 phase 4 wire Amperage: 2,000A
Suite 3	Manufacturing/Lab Voltage: 120V/208V 3 phase 4 wire Amperage: 2,000A
Suite 4	Office Voltage: 277V/480V 3 phase 4 wire Amperage: 1,600A
Suite 5	Office
Suite 7	Warehouse

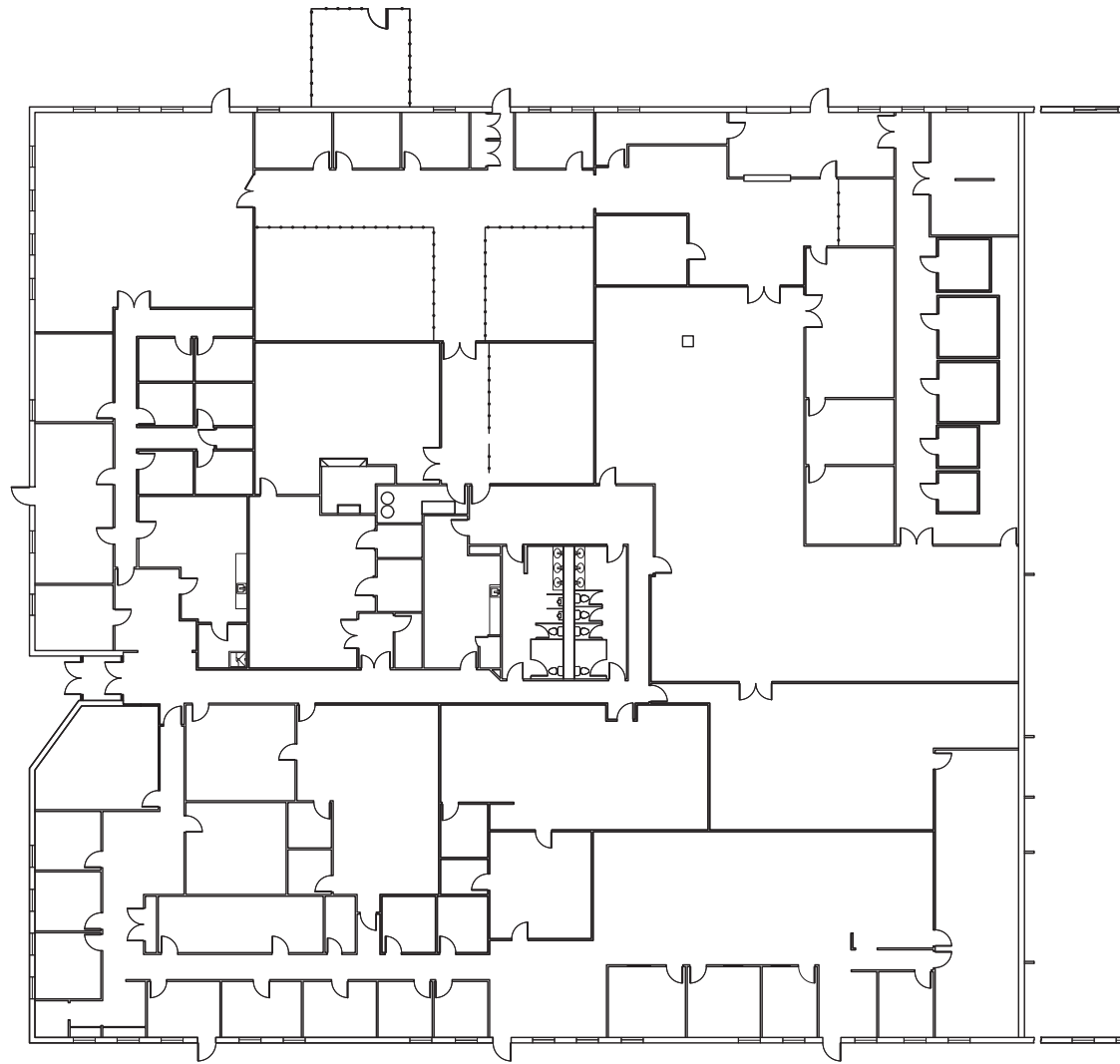
20 Blanchard Road

Office/Warehouse/Labs
Cleaning/Manufacturing Space
Voltage: 120V/208V 3 phase 4 wire Amperage: 2,000A



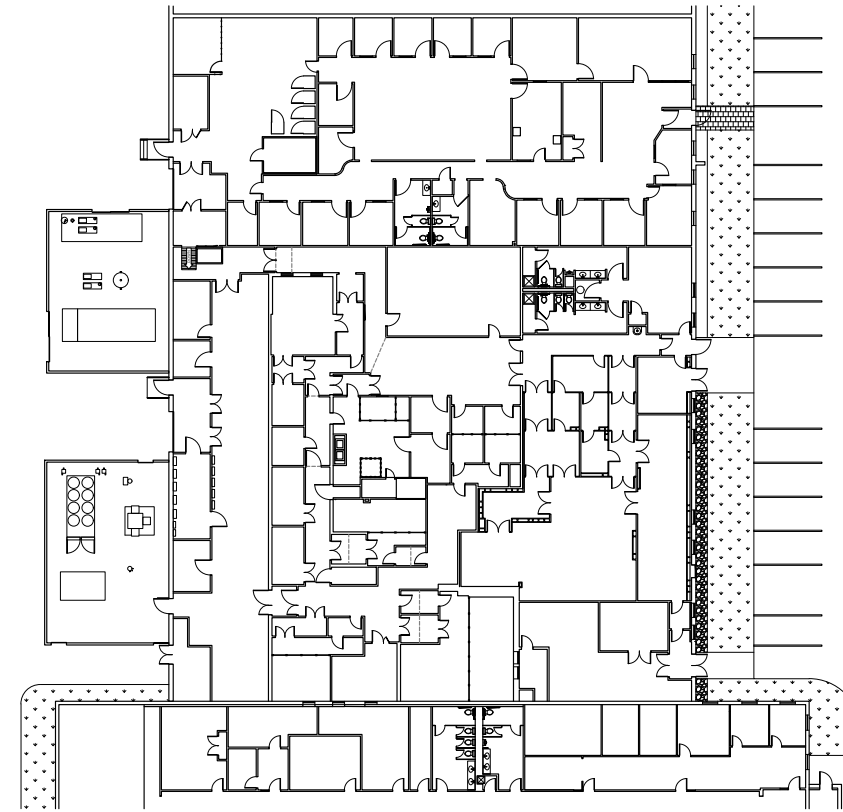
Floor Plan

20 Blanchard Road
32,245 SF

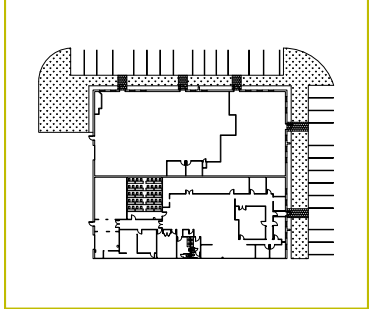


99 South Bedford Street
41,953 SF

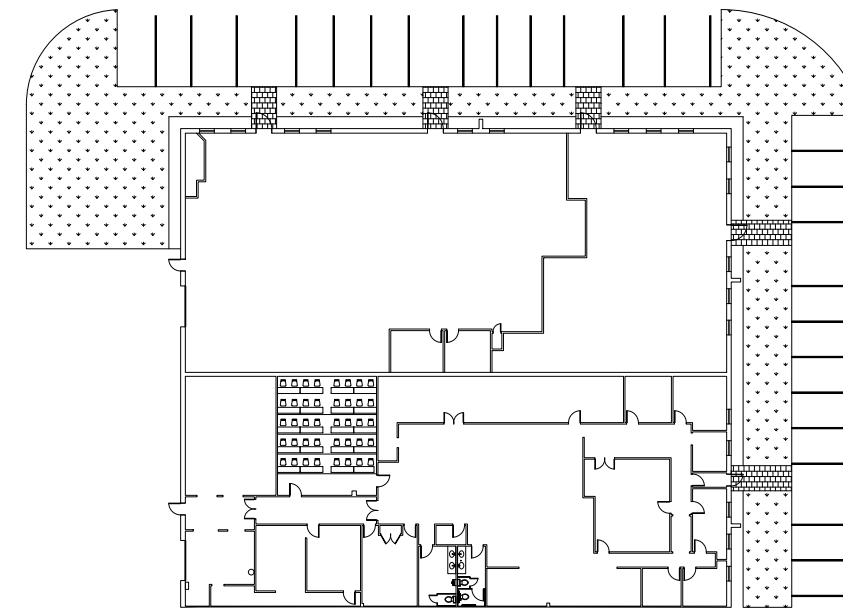
Suites 2/3/4



THIS BUILDING CAN BE
SUBDIVIDED AS SMALL
AS 6,412 (SUITE 7)



Suites 5/7





CONTACT:

Ross Gaudet

+1 617 204 4195

ross.gaudet@cushwake.com

Michael O'Leary

+1 617 279 4585

michael.oleary@cushwake.com

225 Franklin Street
Boston, MA 02110
main +1 617 330 6966
fax +1 617 279 4556

cushmanwakefield.com

