

552 Clarke Road, Unit 100

LONDON, ON

REDUCED ASKING RATE | \$10.50 PER SQ. FT.



Property Details

LOCATION	Clarke Rd & Oxford St E
WAREHOUSE SIZE	26,304 Sq. Ft.
OFFICE SIZE	8,090 Sq. Ft.
TOTAL UNIT SIZE	34,394 Sq. Ft.
CLEAR HEIGHT	16' 6"
SHIPPING	2 Truck Level Doors
ZONING	LI1 (light industrial)
POSSESSION	TBD
ASKING RATE	\$10.50 Per Sq. Ft.
TMI (2024)	\$3.27 Per Sq. Ft.

ADDITIONAL HIGHLIGHTS



Full roof replacement completed in 2022



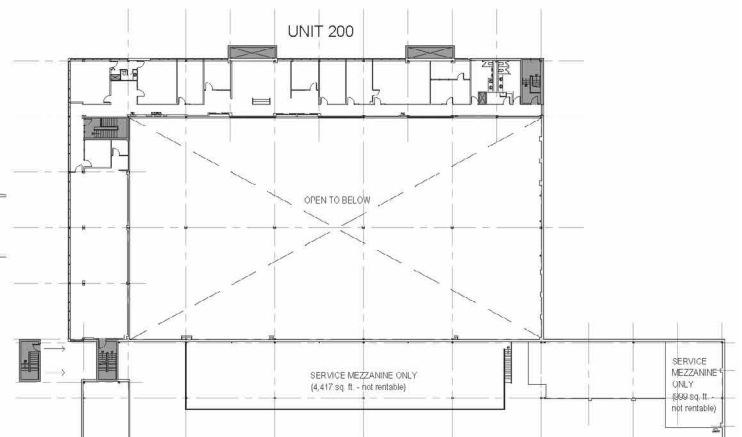
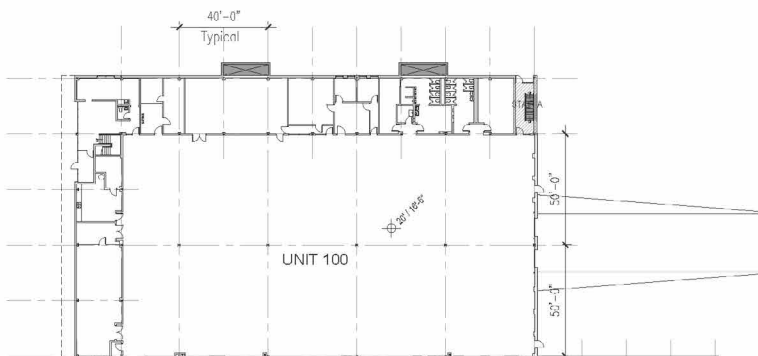
Close to many amenities with great access to public transit



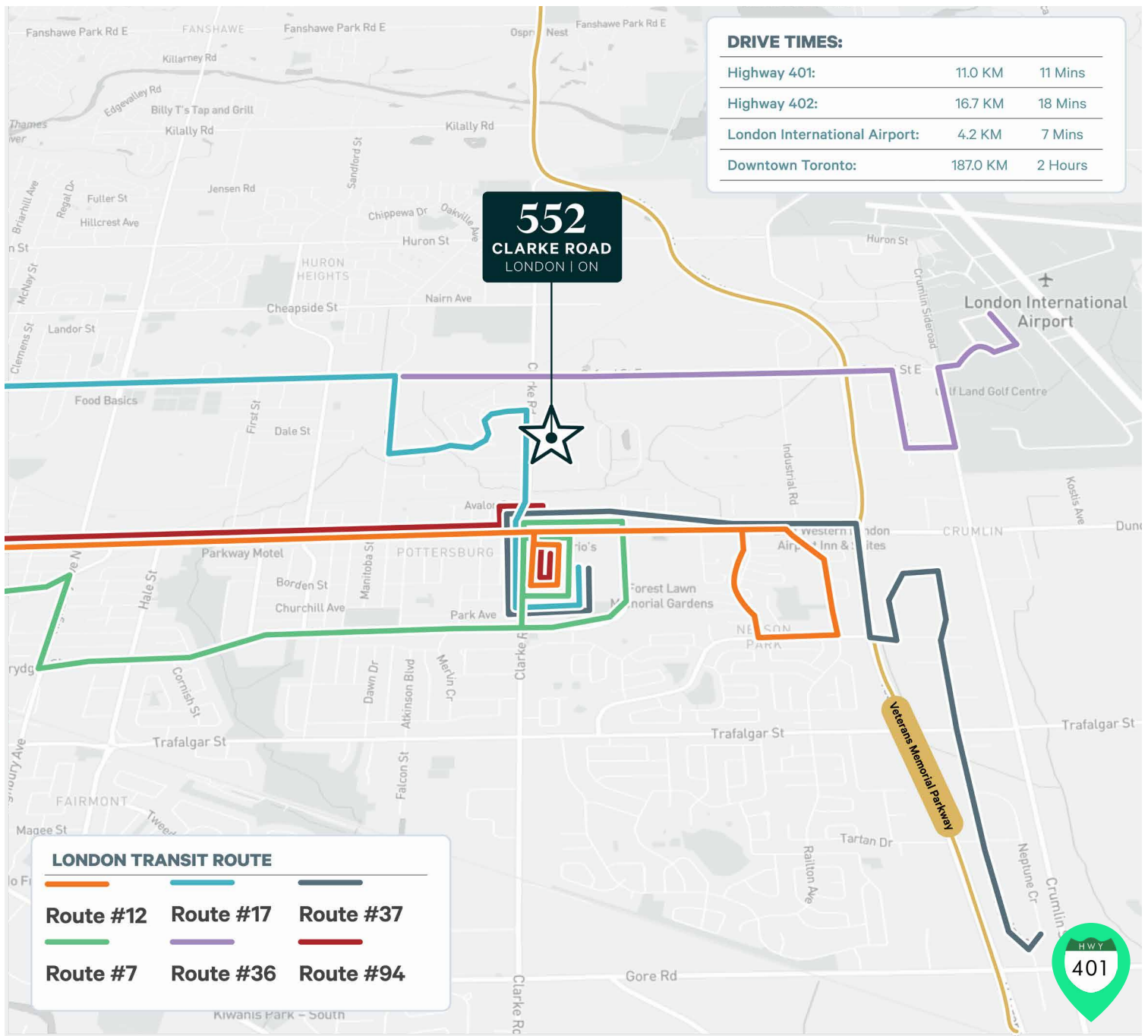
Easy access to Highway 401 via Veterans Memorial Parkway

[Click Here for Zoning](#)

Floor Plan



2nd Level



For more information, please contact

Randy Fisher**
Senior Vice President
+1 519 872 3494
randy.fisher@cbre.com

Larin Shouldice*
Vice President
+1 519 851 7654
larin.shouldice@cbre.com

Fraser McKenna*
Vice Chairman
+1 416 798 6275
fraser.mckenna@cbre.com

Ted Peters*
Vice President
+1 905 234 0375
ted.peters@cbre.com

*Sales Representative **Broker

This disclaimer shall apply to CBRE Limited, Real Estate Brokerage, and to all other divisions of the Corporation ("CBRE"). The information set out herein, including, without limitation, any projections, images, opinions, assumptions and estimates obtained from third parties (the "Information") has not been verified by CBRE, and CBRE does not represent, warrant or guarantee the accuracy, correctness and completeness of the Information. CBRE does not accept or assume any responsibility or liability, direct or consequential, for the Information or the recipient's reliance upon the Information. The recipient of the Information should take such steps as the recipient may deem necessary to verify the Information prior to placing any reliance upon the Information. The Information may change and any property described in the Information may be withdrawn from the market at any time without notice or obligation to the recipient from CBRE. CBRE and the CBRE logo are the service marks of CBRE Limited and/or its affiliated or related companies in other countries. All other marks displayed on this document are the property of their respective owners. All Rights Reserved. Mapping Sources: Canadian Mapping Services canadamapping@cbre.com; DMTI Spatial, Environics Analytics, Microsoft Bing, Google Earth