

The Desmond Building

5500 WILSHIRE BOULEVARD

MUSEUM ROW | MIRACLE MILE

FOR LEASE



NEW opportunity to lease boutique office spaces in an iconic building along Museum Row; a highly dynamic and central stretch of Wilshire Boulevard.

AVAILABLE SF

TOWER SUITES | FULL FLOOR OFFICES

From 1,445 to 1,679 SF

UNIQUE HIGH CEILING SPEC SUITES

2nd Floor - Up to 11,500 SF

ICONIC ART DECO BUILDING

Distinguished 1920's facade, stylized lobby with terrazzo floors and ornate architectural details

NEW YORK STYLE KEYED ELEVATOR

Secured entry, lift opens into suite

OPEN VISTA VIEWS

Light and bright views of Los Angeles, the Hollywood Hills, and bustling street scenes from most suites

- **PARKING**
3:1,000
- **SECURITY**
On-site

LISTING TEAM

JAKE ZACUTO

Managing Director

310.469.9012

jake@zacutogroup.com

DRE #01377441

ANDREW SINASOHN

Executive Vice President

310.469.9023

andrew@zacutogroup.com

DRE #01951740

JACOB DE LA HOYA

Director

213.509.8899

jacob@zacutogroup.com

DRE #02243676

Availabilities

The Desmond Building

TOWER SUITES

Penthouse	LEASED	\$4.95/SF
No. 1000		1,469 SF \$4.75/SF
No. 900	LEASED	\$4.65/SF
No. 800	LEASED	\$4.55/SF
No. 700		1,551 SF \$4.45/SF
No. 600		1,551 SF \$4.25/SF
No. 500		1,613 SF \$4.25/SF
No. 400	LEASED	\$2.95/SF*
No. 300		1,679 SF \$2.95/SF*

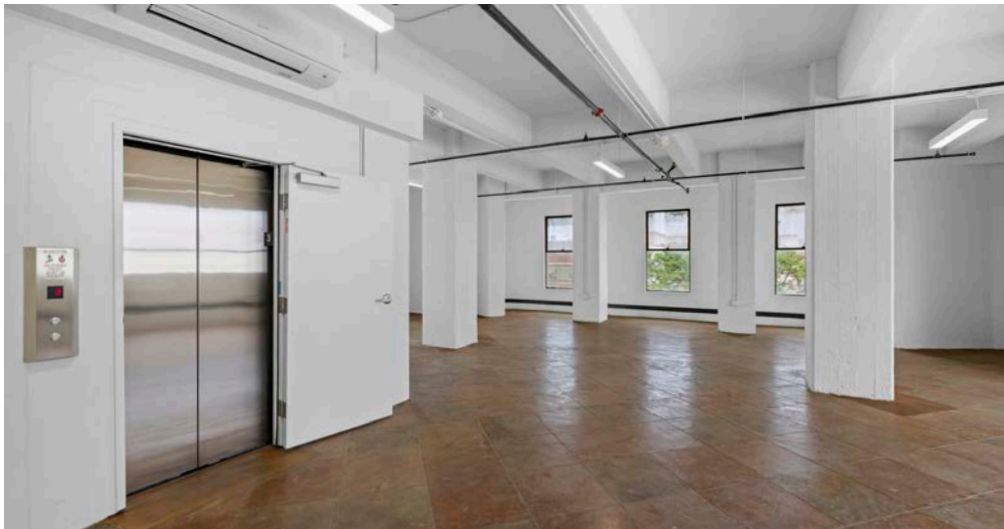
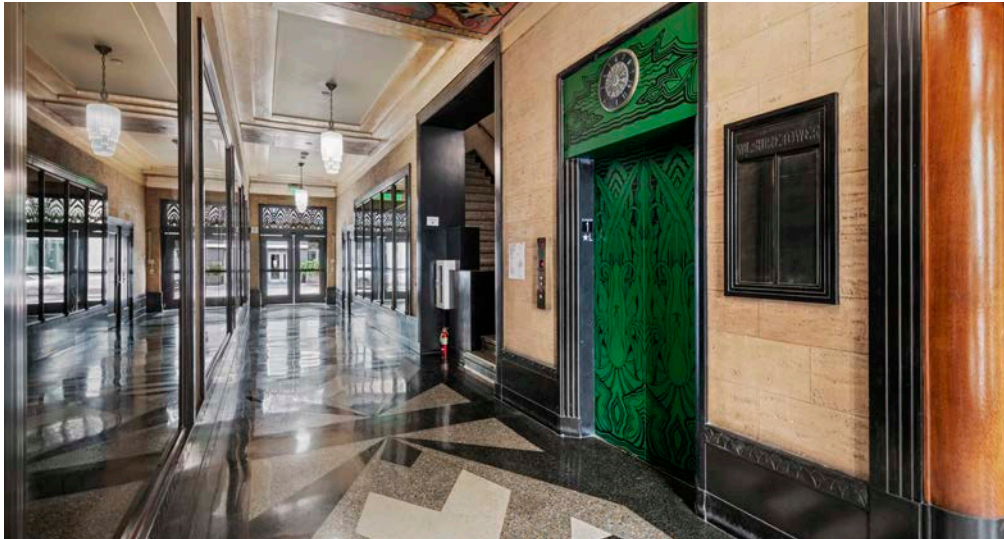
2ND FL UP TO 11,500 SF - \$3.95/SF

LEASED

* Teaser rate for the first year. \$3.65/SF thereafter

FOR LEASE

5500 WILSHIRE BOULEVARD, THE DESMOND BUILDING



WEST HOLLYWOOD

LACMA



5500 Wilshire Boulevard



STAPLES



Ralphs

WILSHIRE BOULEVARD

FedEx

S DUNSMUIR AVE

El Rey THEATRE



Walgreens

REPUBLIQUE



The Desmond Building

2ND FLOOR

HIGH CEILING SPEC SUITES

HALF FLOOR SUITE

250 - 11,500 SF

INDIVIDUAL SUITES

900 - 6,181 SF

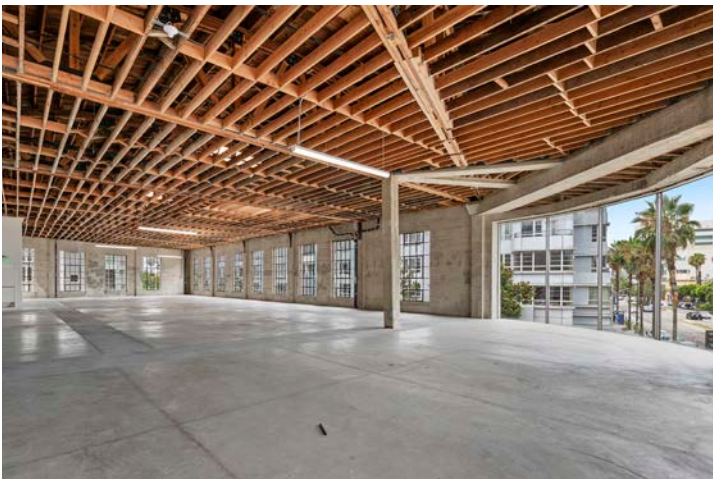
CEILING HEIGHT

± 20ft at the peak

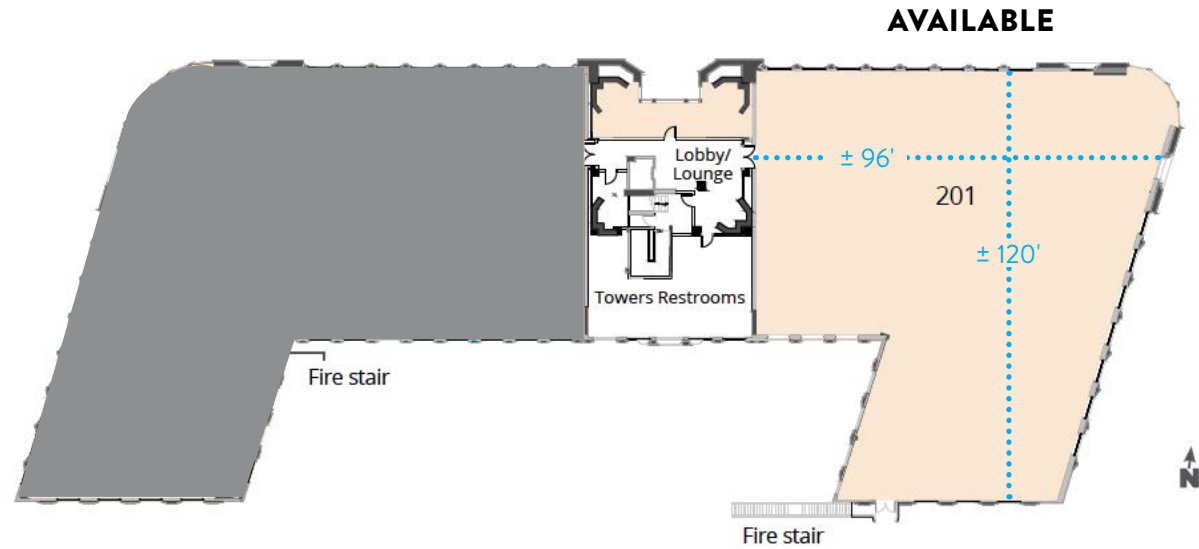
SPEC SUITES

HALF FLOOR - 11,500 SF

SINGLE SUITES - From 900 SF

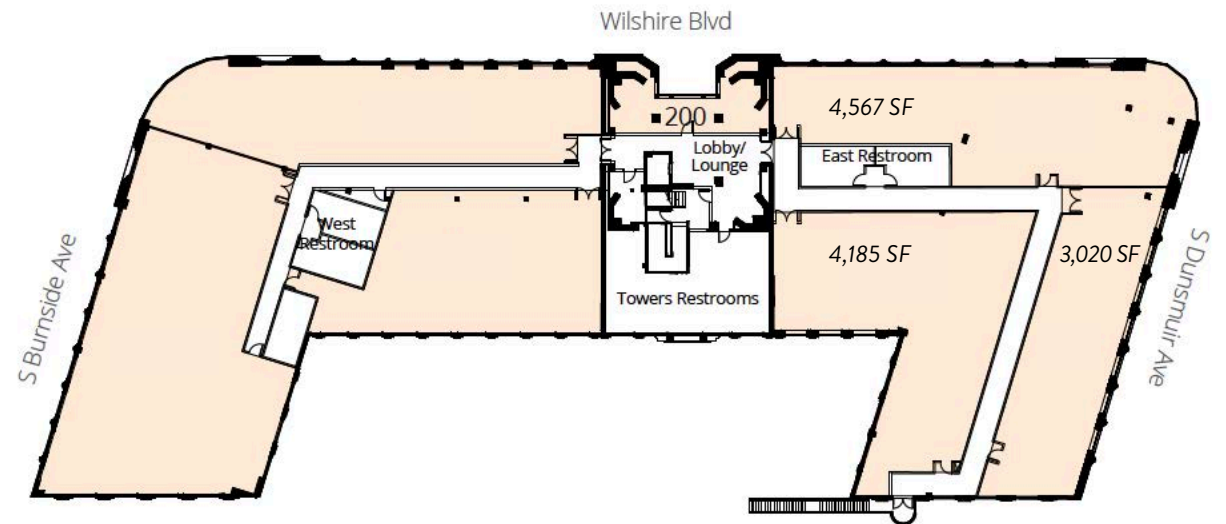


SPLIT SPACE

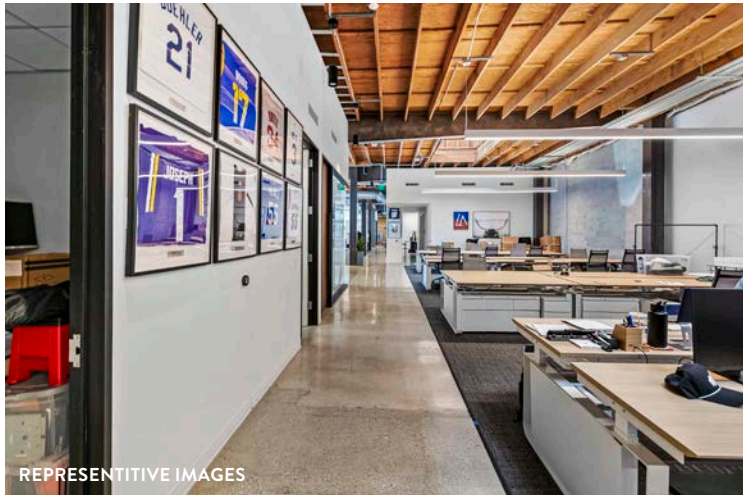
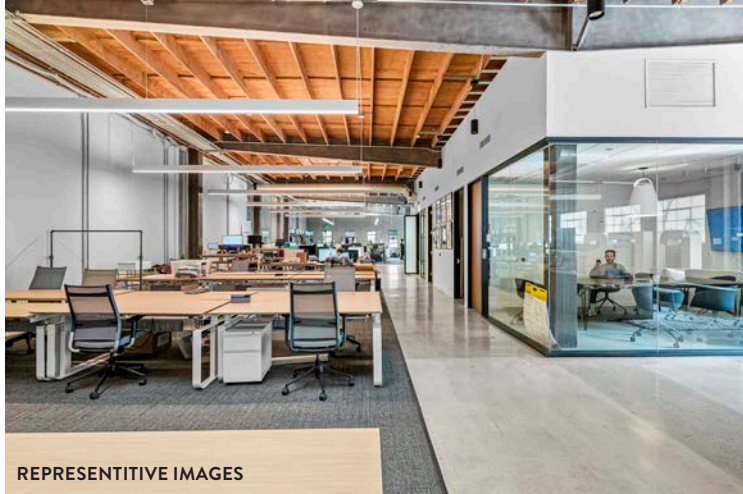


CEILING HEIGHT
± 20ft

INDIVIDUAL SUITE LAYOUT (HYPOTHETICAL)



The Desmond Building



HYPOTHETICAL 3 SUITE LAYOUT

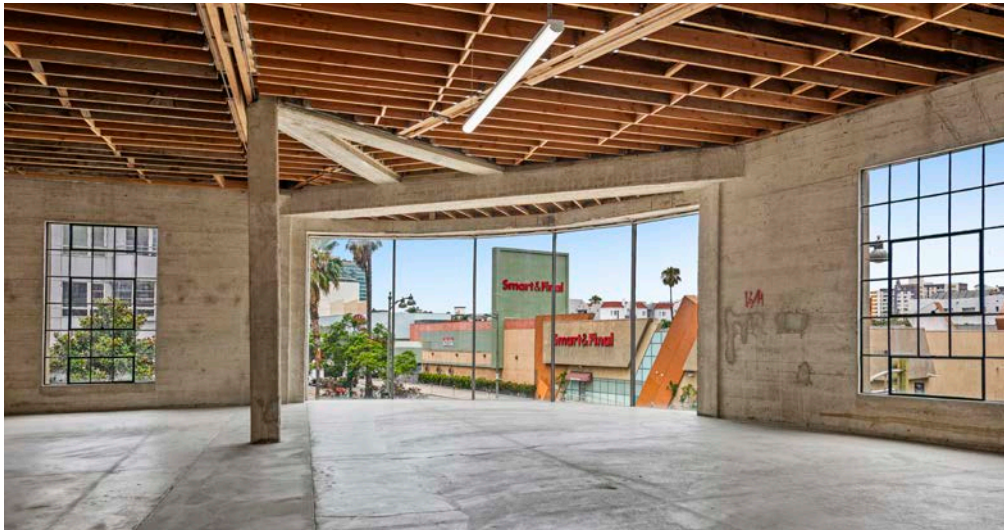
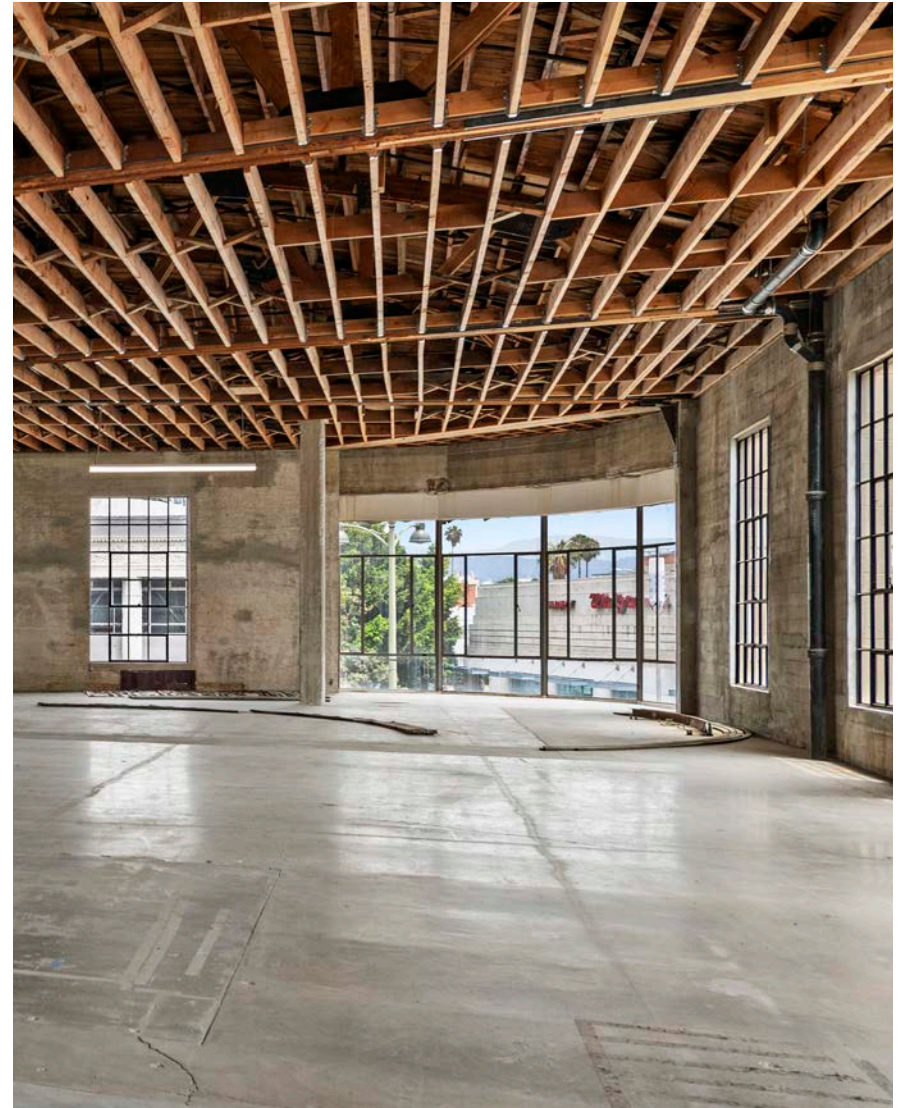
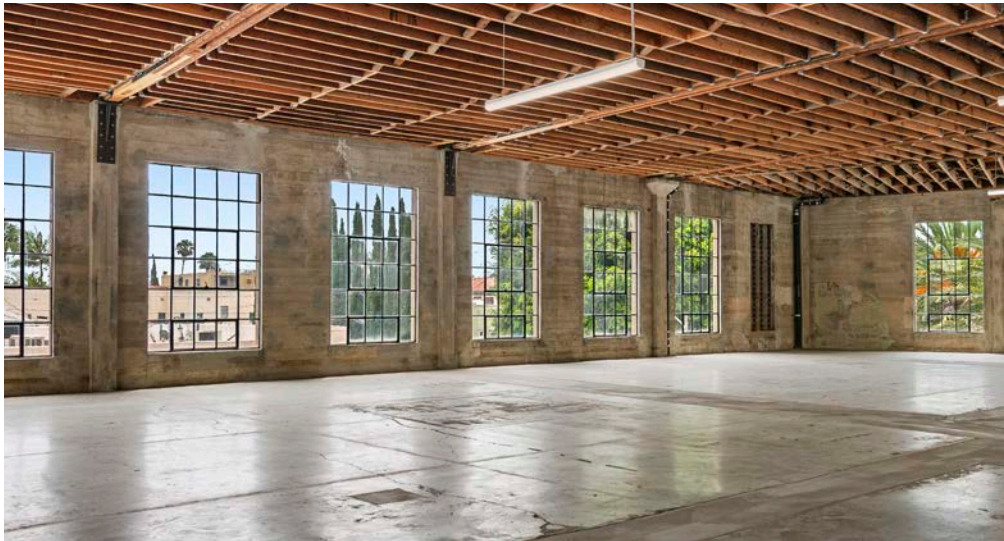




2ND FLOOR

FOR LEASE

5500 WILSHIRE BOULEVARD, THE DESMOND BUILDING



TOWER SUITES

TOWER SUITES

FLOORS 3 - 10

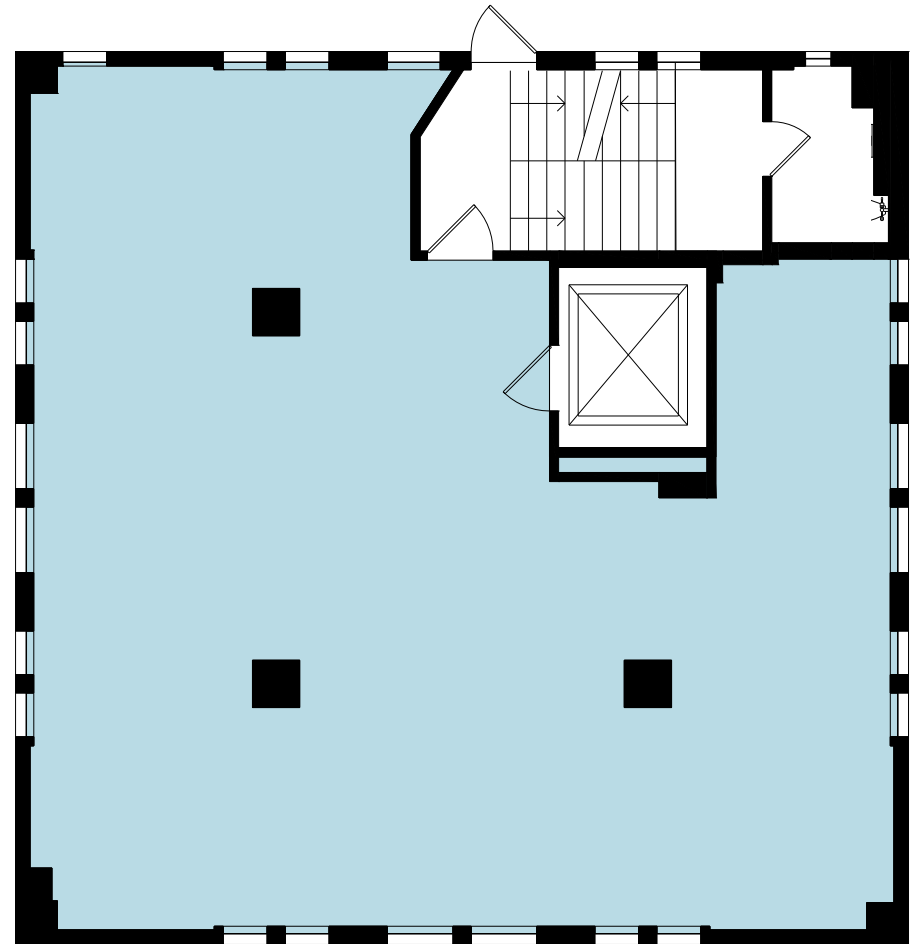
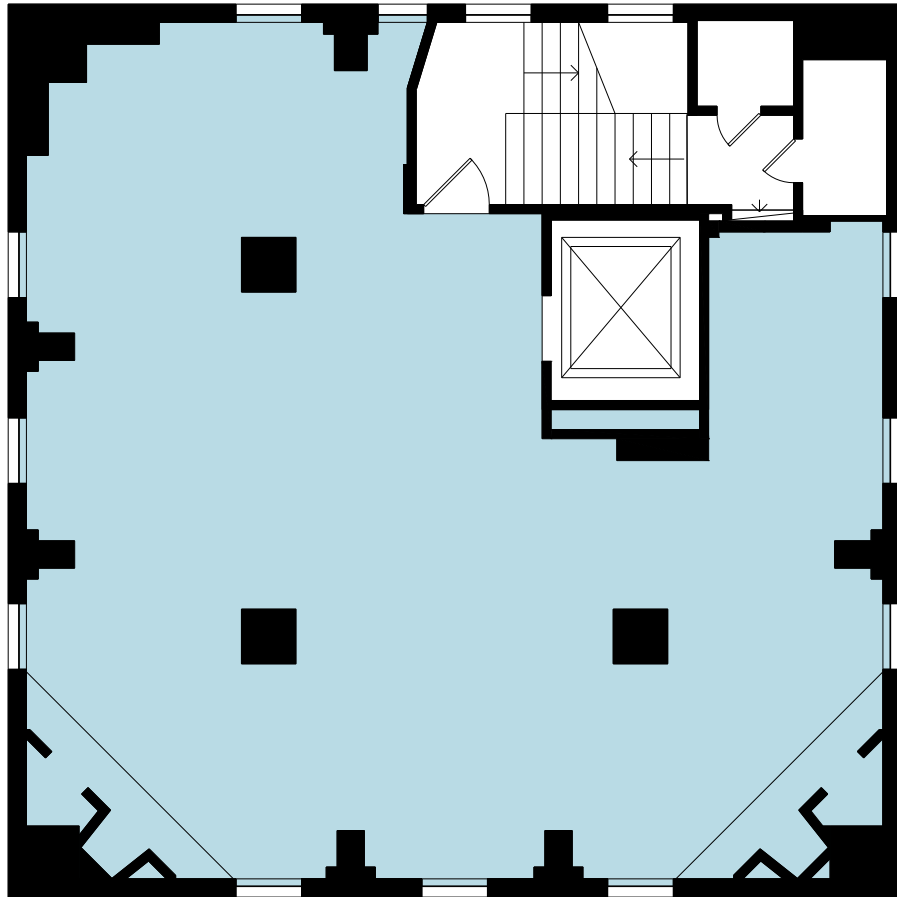
300 -	1,679 SF	\$2.95/SF*
500 -	1,613 SF	\$4.25/SF
600 -	1,551 SF	\$4.25/SF
700 -	1,551 SF	\$4.45/SF
1000 -	1,469 SF	\$4.75/SF

- *Brand new*
- *Move-in ready spec suites*

** Teaser rate for the first year. \$3.65/SF thereafter*

Floor Plan

Penthouse, 10th Floor



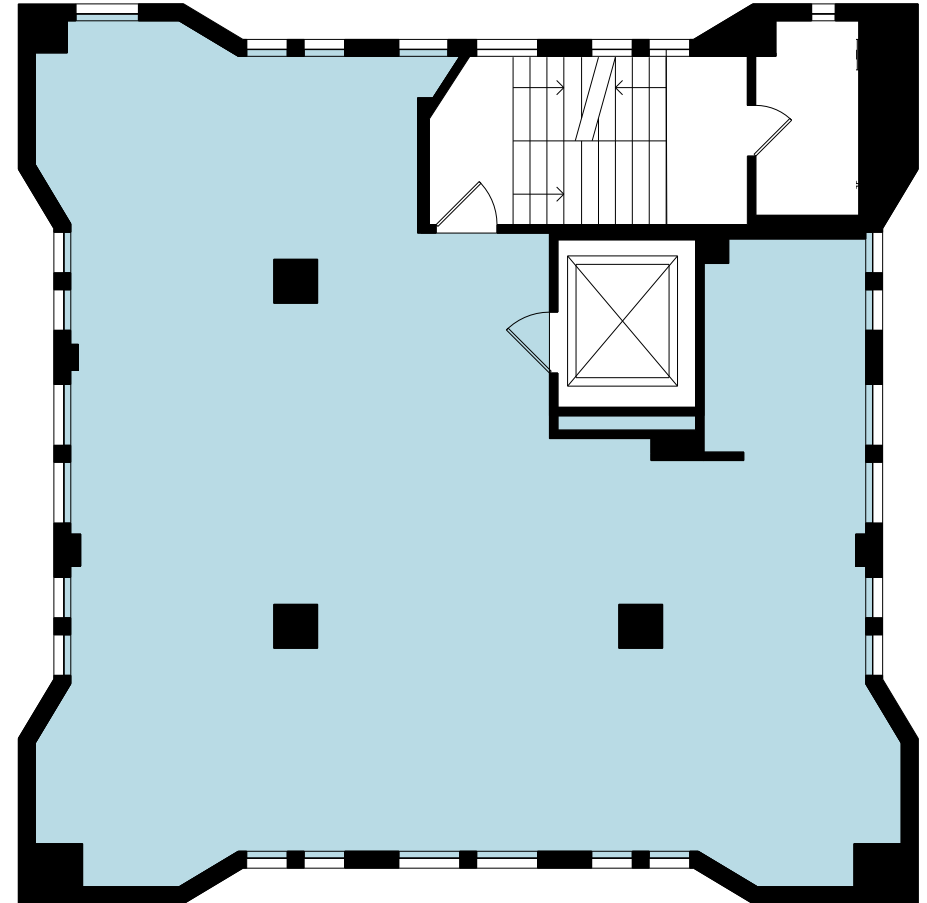
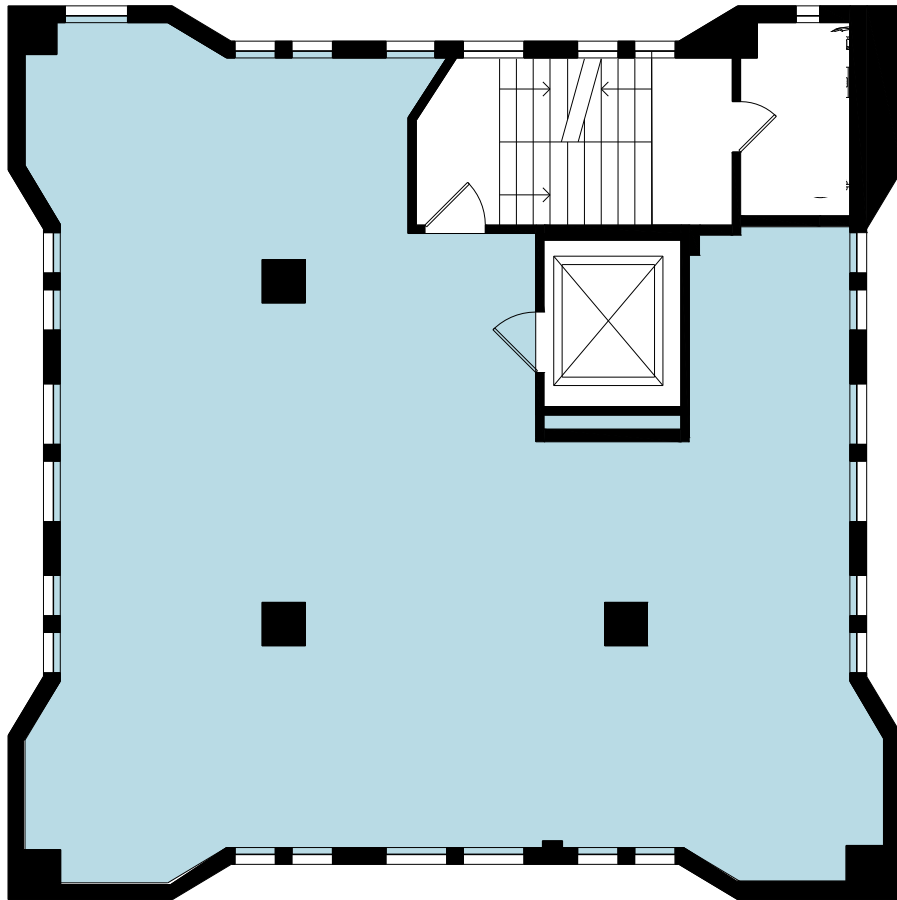
The Desmond Building



Suite 1000 - 10th FL

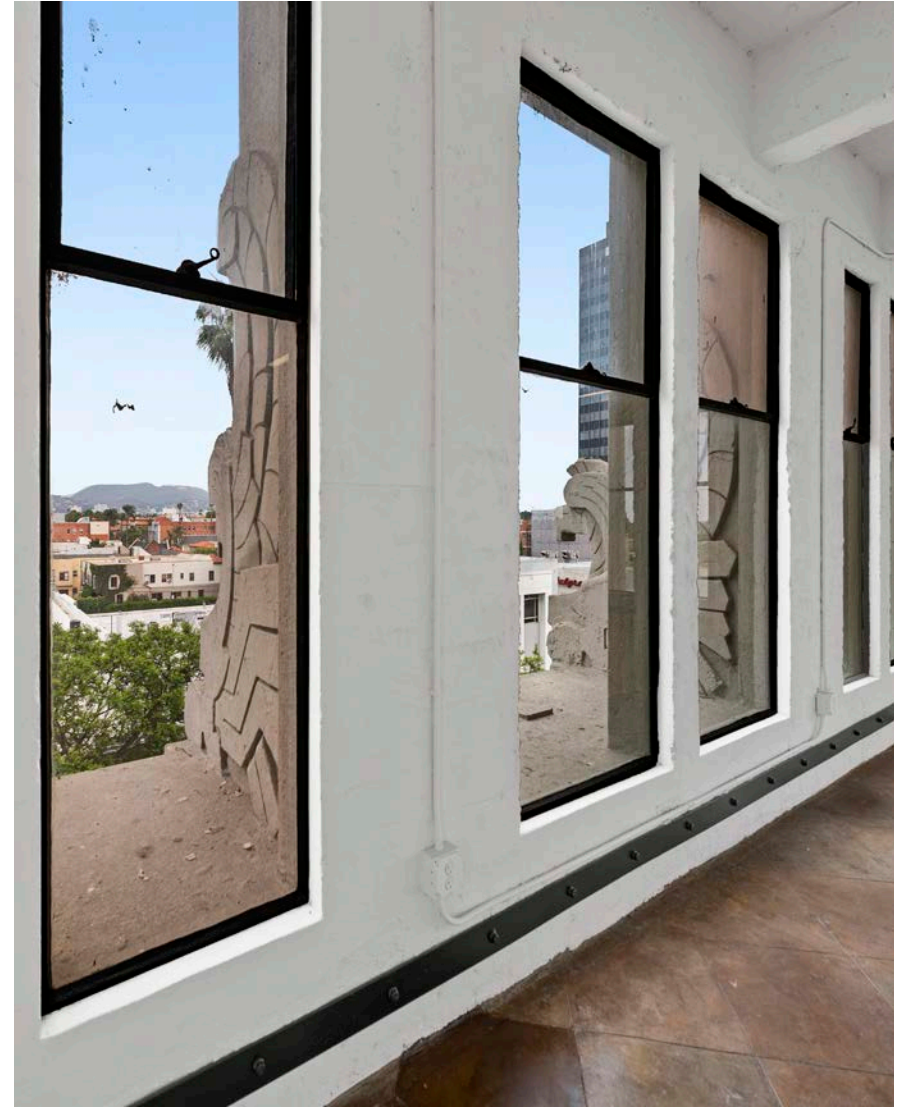
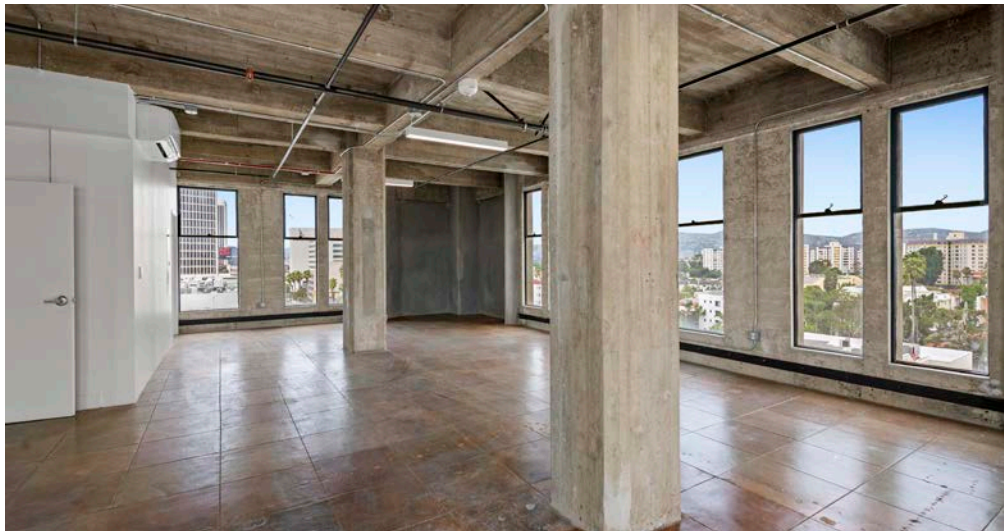
Floor Plan

5th - 8th Floor



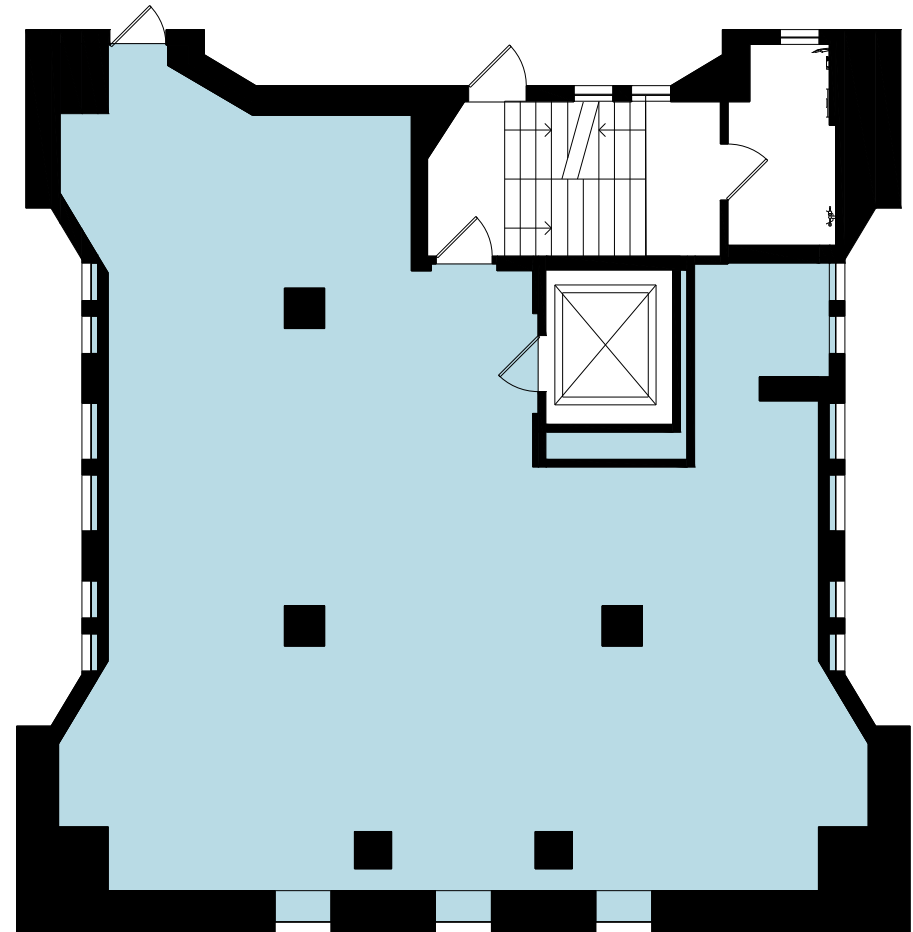
FOR LEASE

5500 WILSHIRE BOULEVARD, THE DESMOND BUILDING



Floor Plan

3rd Floor





TOWER SUITES

A+ LOCATION AT THE CENTER OF IT ALL

CENTRAL TO SOME OF THE BEST RESTAURANTS, MUSEUMS & AMENITIES IN THE CITY

5500 WILSHIRE BOULEVARD, THE DESMOND BUILDING



📍 REPUBLIQUE - LA BREA AVE



📍 EL REY THEATRE - WILSHIRE BLVD



📍 MET HER AT A BAR - LA BREA AVE



📍 LACMA - WILSHIRE BLVD

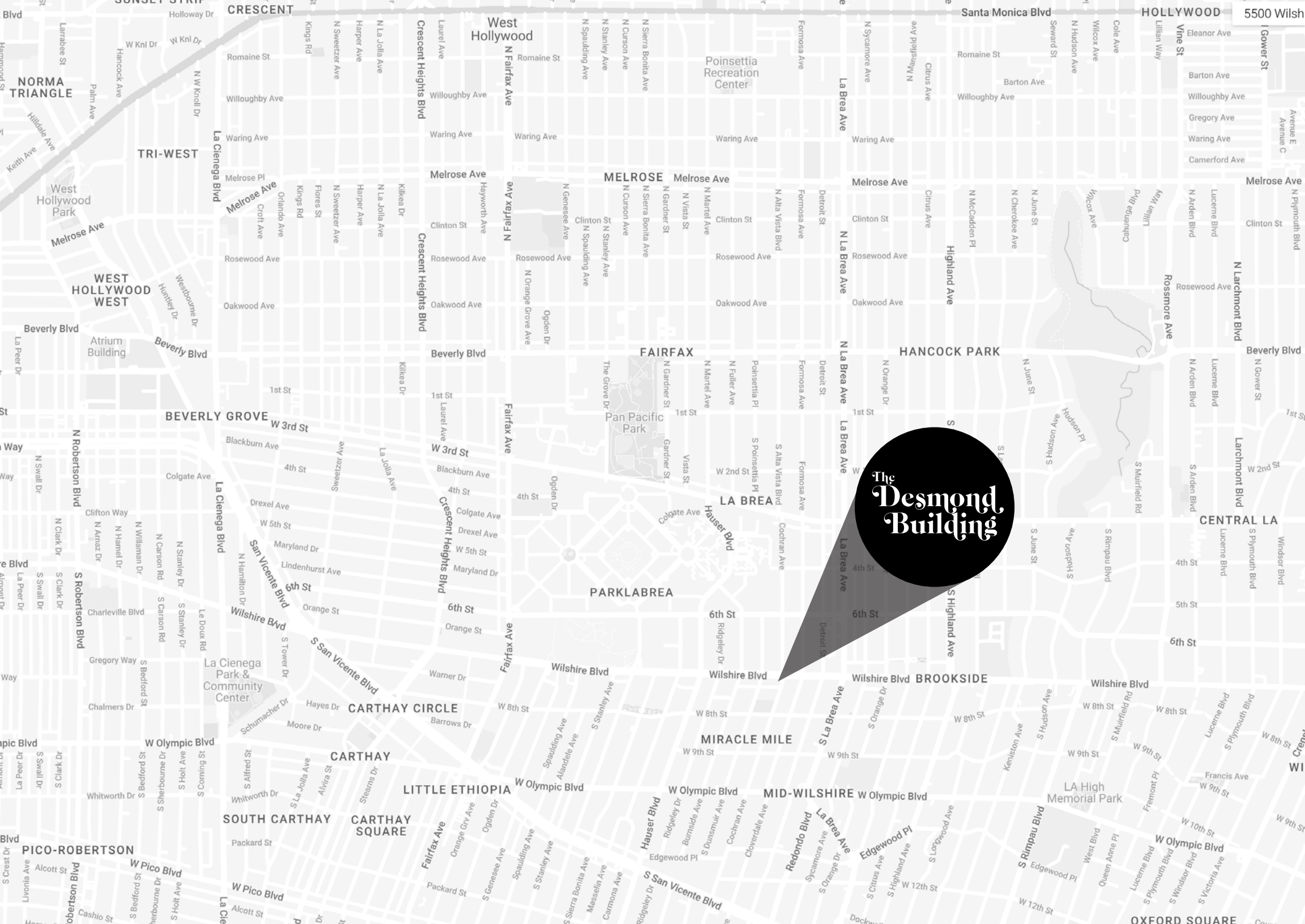


📍 KAZUNORI - WILSHIRE BLVD



📍 ACADEMY MUSEUM OF MOTION PICTURES





The
Desmond
Building

The Desmond Building



The Desmond Building

5500 WILSHIRE BOULEVARD

MUSEUM ROW | MIRACLE MILE



ZACUTO GROUP
COMMERCIAL REAL ESTATE

JAKE ZACUTO

Managing Director

310.469.9012

jake@zacutogroup.com

DRE #01377441

ANDREW SINASOHN

Executive Vice President

310.469.9023

andrew@zacutogroup.com

DRE #01951740

JACOB DE LA HOYA

Director

213.509.8899

jacob@zacutogroup.com

DRE #02243676

No warranty, express or implied, is made as to the accuracy of the information contained herein. This information is submitted subject to errors, omissions, change of price, rental or other conditions, withdrawal without notice. All parties who receive this material should not rely on it, but should use it as a starting point of analysis, and should independently confirm the accuracy of the information contained herein through a due diligence review of the books, records, files and documents that constitute reliable sources of the information described herein. Logos and images are for identification purposes only and may be trademarks of their respective companies. All terms provided are approximate. Leasee to verify. 12/2025

ZACUTOGROUP.COM | 310-469-9300

