

177-199 Crossways Park Drive, Woodbury NY



OFFICE SUBLEASE | 6,222 SF

AVAILABLE SUBLEASE SPACE

1st Floor: 6,222 sq. ft.

SUBLEASE TERM

Thru March 28, 2028

ASKING RENT

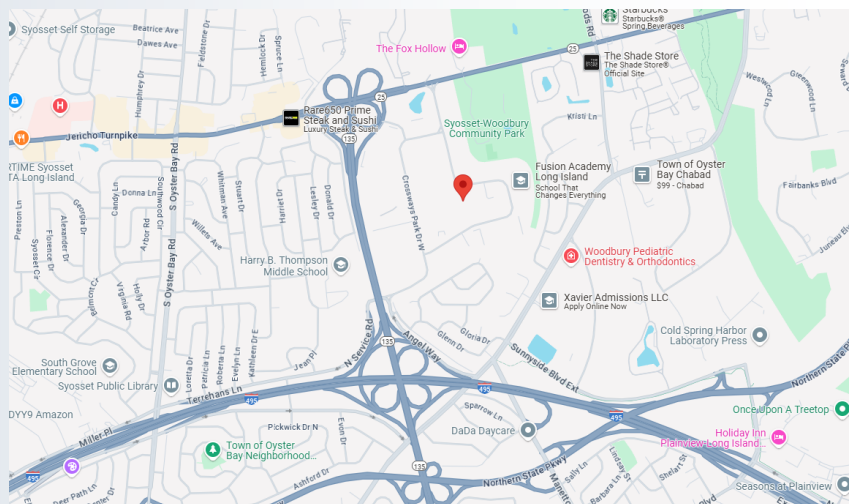
Negotiable

PARKING

5 cars per 1,000 sq. ft.

COMMENTS

- Furniture included
- Submetered utilities
- Backup generator
- Located at the intersection of the Seaford-Oyster Bay Expressway and Jericho Turnpike
- Less than 5 minutes to the LIE
- Excellent accessibility in the Crossways Business Park



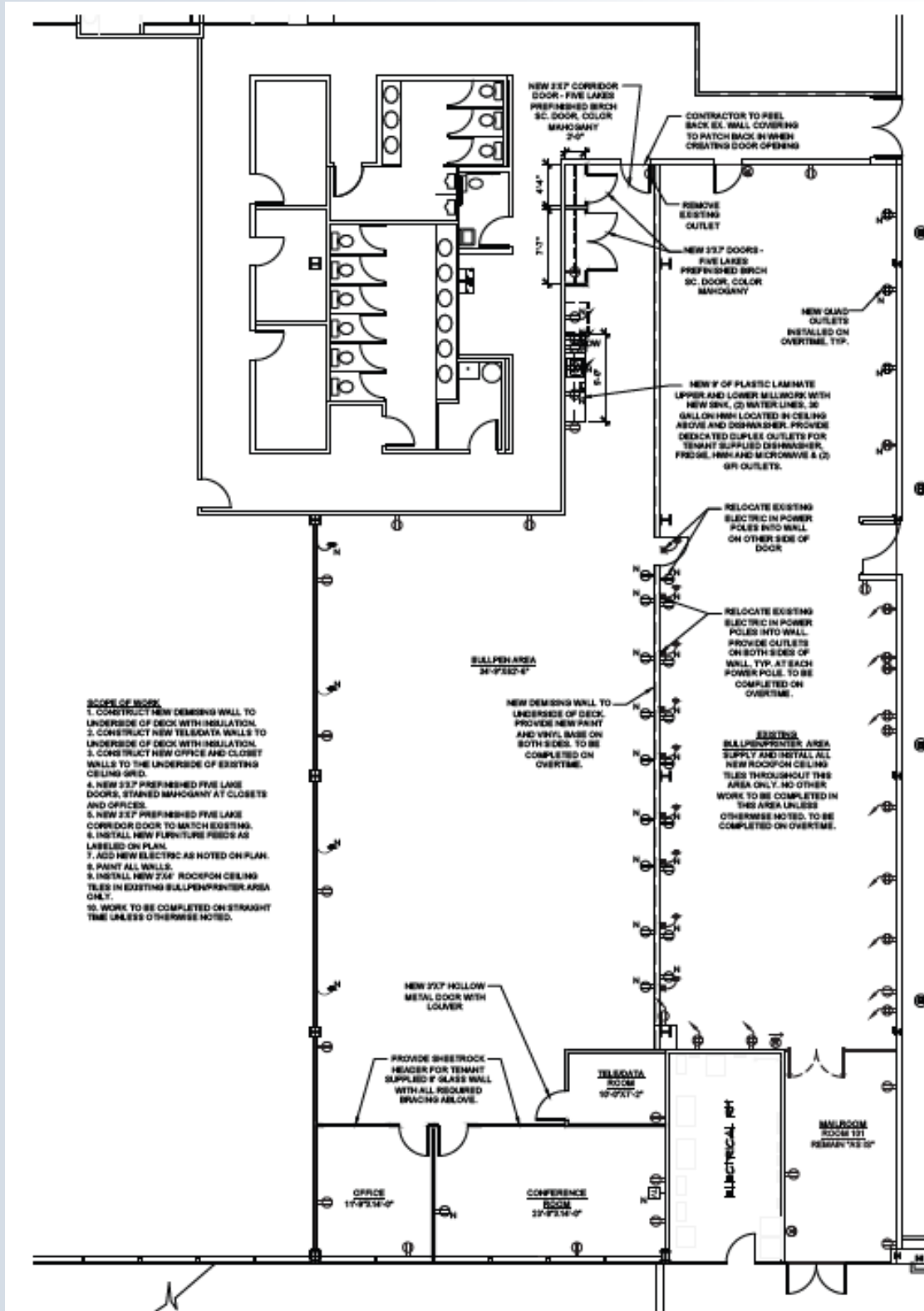
PARAGONGroup^{LLC}
Corporate Real Estate & Tenant Representation

516.336.5440

Jeffrey Nemshin, Partner (ext. 16)
jnemshin@paragongroupllc.com

Jeanine Lanza, Executive Vice President (ext. 13)
jlanza@paragongroupllc.com

177-199 Crossways Park Drive, Woodbury NY



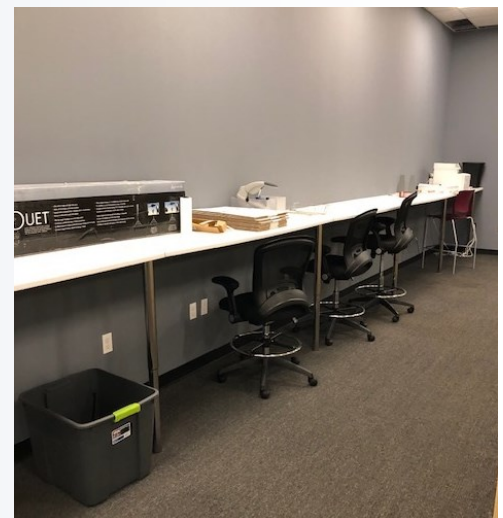
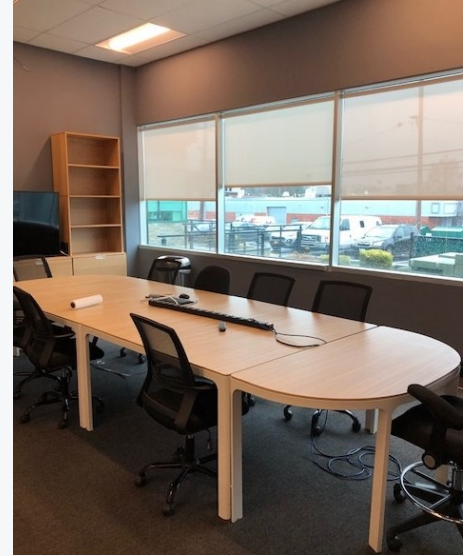
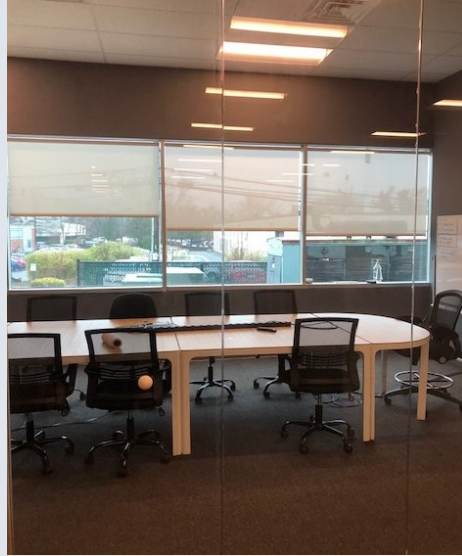
516.336.5440

Jeffrey Nemshin, Partner (ext. 16)
jnemshin@paragongroupllc.com

Jeanine Lanza, Executive Vice President (ext. 13)
jlanza@paragongroupllc.com

PARAGONGroupLLC
Corporate Real Estate & Tenant Representation

177-199 Crossways Park Drive, Woodbury NY



PARAGONGroup^{LLC}
Corporate Real Estate & Tenant Representation

516.336.5440

Jeffrey Nemshin, Partner (ext. 16)

jnemshin@paragongroupllc.com

Jeanine Lanza, Executive Vice President (ext. 13)

jlanza@paragongroupllc.com