

PILCHER ● LONDON

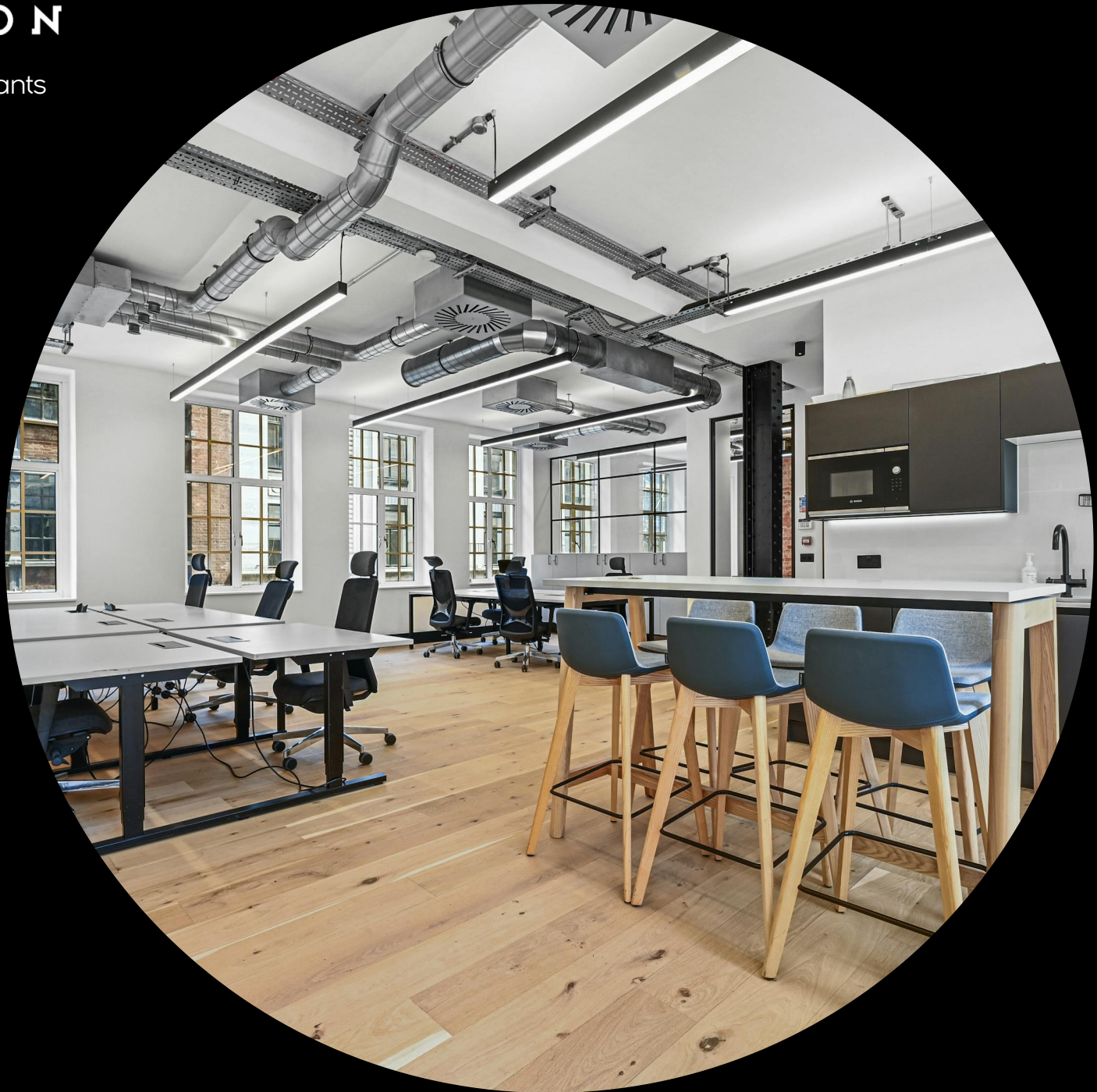
bespoke commercial property consultants

cinema house
93 wardour street
london, w1f

for rent / lease

728 - 1,580 sq ft

stylishly fully fitted office floor
with its own roof terrace in the
heart of soho



www.pilcher.london | 0207399 8600

● cinema house, 93 wardour street, london, w1f

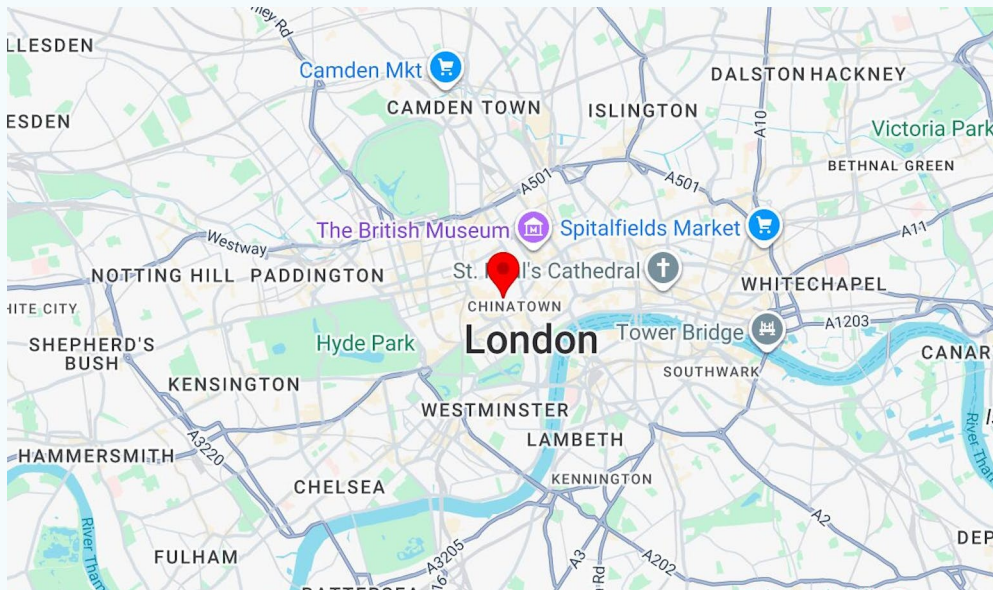


about

these office floors are being offered to a fully fitted spec in the heart of soho for tenants to move into quickly with terraces on the 1st + 5th floors

location

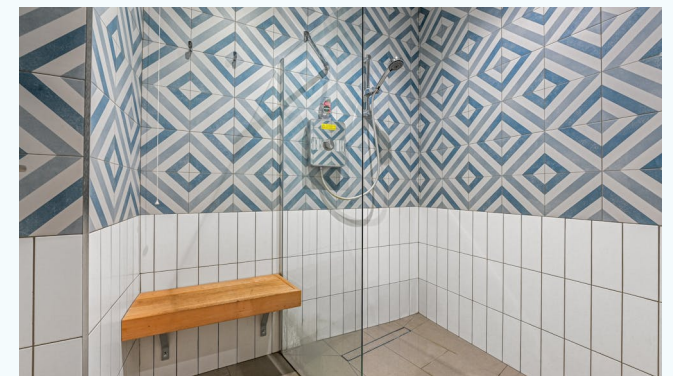
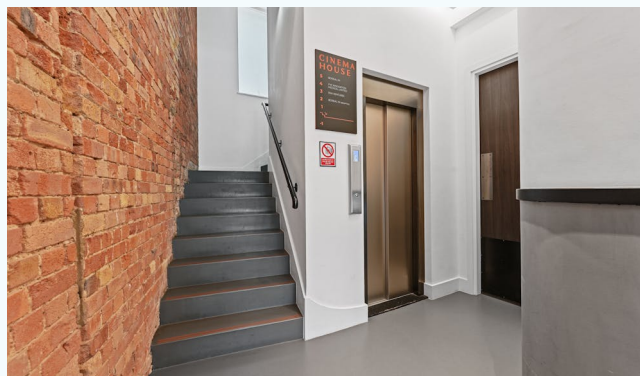
cinema house is situated in the heart of soho close to the junction with brewer st where there are an abundance of trendy restaurants, coffee shops and bars all within close proximity



PILCHER ● LONDON

www.pilcher.london | 0207399 8600

● cinema house, 93 wardour street, london, w1f



 cinema house, 93 wardour street, london, w1f

accommodation

the accommodation comprises the following areas:

name	sq ft	sq m	availability
5th	728	67.63	available
2nd	852	79.15	available
1st - self contained with its own roof terrace	904	83.98	under offer
total	2,484	230.76	

 cinema house, 93 wardour street, london, w1f

amenities

- exclusive roof terrace (1st + 5th floors)
- fully fitted to a high quality
- meeting room on each floor
- air conditioning
- kitchenette on each floor
- passenger lift
- high speed fibre connectivity
- cycle + shower facilities
- camfil cc400 air cleaning and filtration system with hepa filters and camfil air image sensor monitoring and control
- meeting rooms on each floor
- situated in the heart of soho

financials

rent	£89.50 per sq ft
rates payable	£27.94 per sq ft
service charge	£14.50 per sq ft

legal fees

each party to bear their own costs

vat

applicable

lease

new lease flexible by arrangement

possession

available immediately

 cinema house, 93 wardour street, london, w1f

PILCHER ● LONDON

bespoke commercial property consultants



viewings & more information

simon rinder

020 7399 8611 | 07734 488 286

simonrinder@pilcher.london

taylor rosen

020 7399 8610 | 07834 789 346

taylorrosen@pilcher.london

julian wogman

020 7399 8605 | 07904 337 664

julianwogman@pilcher.london

bluebook (joint agent)

020 7167 6400