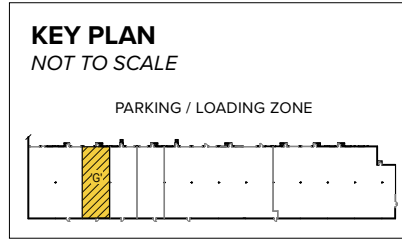




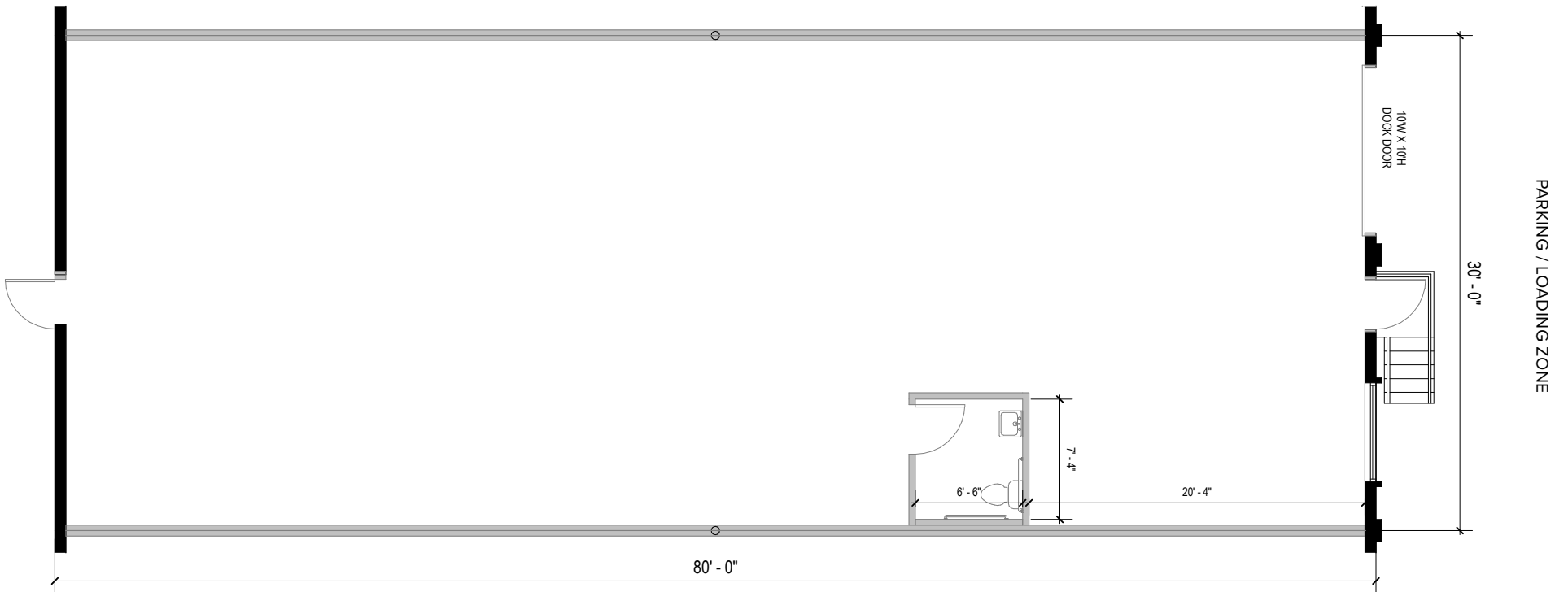
**Total SF Available:**  
2,400 SF

100% warehouse space with  
10'x10' dock door (1)



**CLICK TO VIEW  
VIRTUAL TOUR**

*Note: This space plan is subject to existing field conditions. This drawing is proprietary and the exclusive property of St. John Properties, Inc. Any duplications, distribution, or other unauthorized use is strictly prohibited.*





# Patapsco Business Center

**812 W. Patapsco Avenue**  
**Baltimore, MD 21230**

Patapsco Business Center is a 41,600 square foot single-story flex/R&D building located on Patapsco Avenue in Baltimore City, MD. The building is situated just minutes from downtown Baltimore via MD 295.

## Flex/R&D Space

812 W. Patapsco Avenue      Suites A-D      9,600 SF

812 W. Patapsco Avenue      Suites E-R      32,000 SF

## Flex/R&D Specifications

Suite Sizes      2,400 up to 32,000 SF

Ceiling Height      16 ft. clear minimum

Offices      Built to suit

Heat      Gas

Roof      EPDM rubber

Exterior Walls      Brick on block

Loading      Dock or drive-in

Zoning      M-2-1



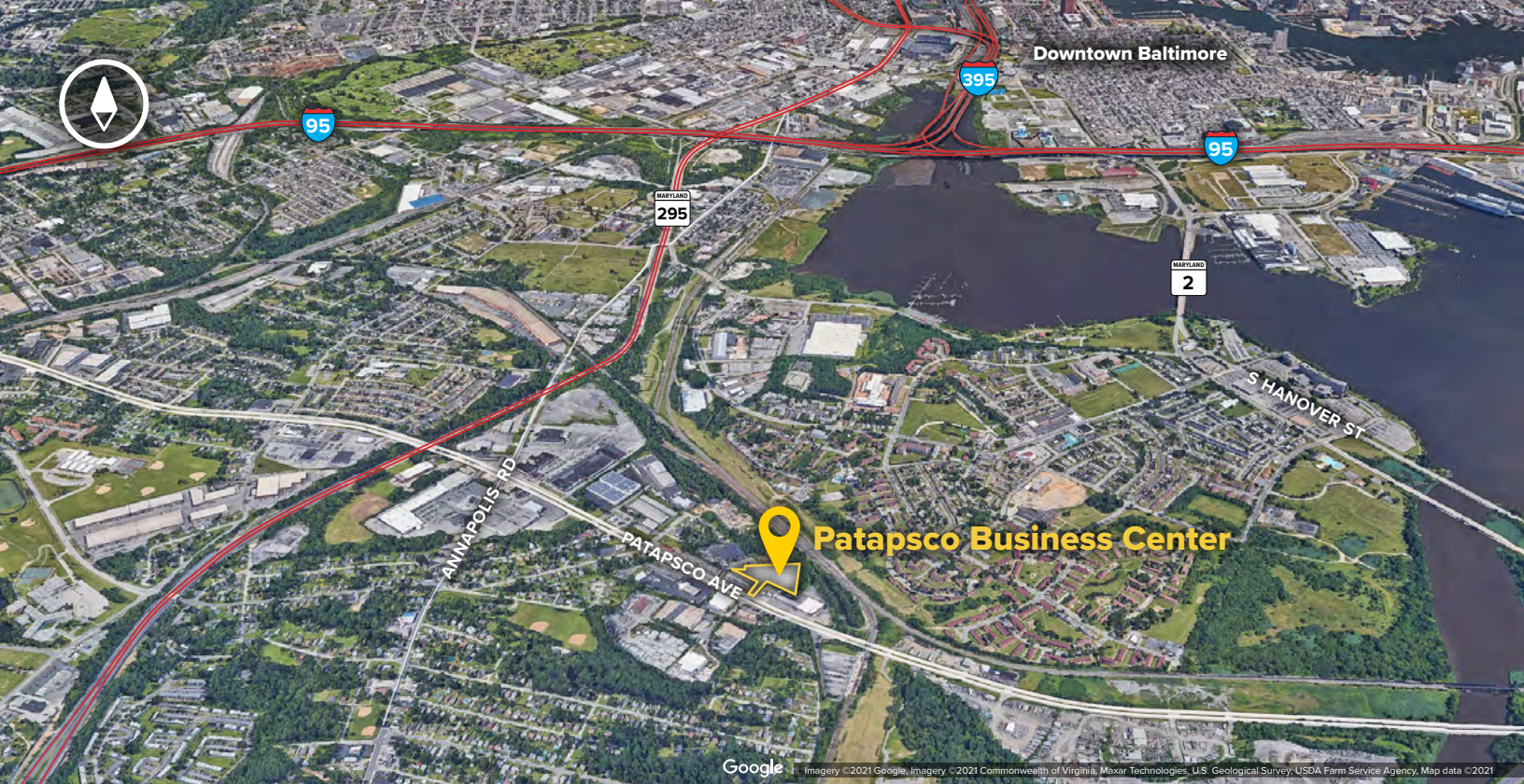
Visit [sjpi.com/patapscobusiness](http://sjpi.com/patapscobusiness) to learn more



Placing Our Clients' Needs First Since 1971

**SJPI.COM | 410.788.0100**





**Distances to:**

- Interstate 95 ..... 2 miles
- MD 295 ..... 2 miles
- Baltimore, MD (Downtown) ..... 4 miles
- Interstate 695 ..... 4 miles
- BWI Airport ..... 6 miles
- Annapolis, MD (Downtown) ..... 22 miles
- Washington, D.C. .... 36 miles



**Scan with your mobile device to take a virtual tour, download floor plans and more!**

# Contact Us

For additional leasing information or to schedule a tour, contact:

**Claire Cobert**

Leasing Representative

CCobert@sjpi.com | 410.369.1274

**Corporate Headquarters:**

2560 Lord Baltimore Drive | Baltimore, MD 21244

**410.788.0100 | SJPI.COM**

**About St. John Properties**

St. John Properties, Inc. is one of the nation's largest and most successful privately held commercial real estate firms. The company owns, manages, and has developed office, flex/research and development, warehouse, retail, and multifamily space nationwide.

Connect with us @stjohnprop



*This information contained in this publication has been obtained from sources believed to be reliable. St. John Properties makes no guarantee, warranty or representation about this information. Any projections, opinions, assumptions or estimates used here are for example only and do not represent the current or future performance of the property. Interested parties should conduct an independent investigation to determine whether the property suits their needs. REV 10/25*