

FOR LEASE

Greenville Center

RETAIL / OFFICE | 3801 KENNETT PIKE | GREENVILLE, DE 19807



OFFERING SUMMARY

Available SF:	330 - 4,010 SF
Lease Rate:	Negotiable
Lot Size:	10.54 Acres
Building Size:	134,480 SF
Zoning:	CR-UDC

PROPERTY OVERVIEW

This 134,480 SF grocery anchored retail and office complex includes a great mix of high end retailers, local boutiques, restaurants, fitness centers, and businesses. Tenants include Janssen's Market, Talbots, Pizza by Elizabeth's, White House Black Market, Wells Fargo, WSFS, M & T Bank, the US Post Office, and Pure Barre.

LOCATION OVERVIEW

Greenville Center is located in the heart of highly affluent Greenville, Delaware across from Powder Mill Square. It is within close proximity to great shopping, restaurants, and fitness centers, as well as major employment centers including downtown Wilmington, north Wilmington, and growing Hockessin, DE.



PETTINARO

PETTINARO.COM

[f](#) PettinaroCRE/
[in](#) company/pettinaro/
[t](#) PettinaroCRE/

CORPORATE OFFICES

234 North James Street
Newport, DE 19804
302.999.0708

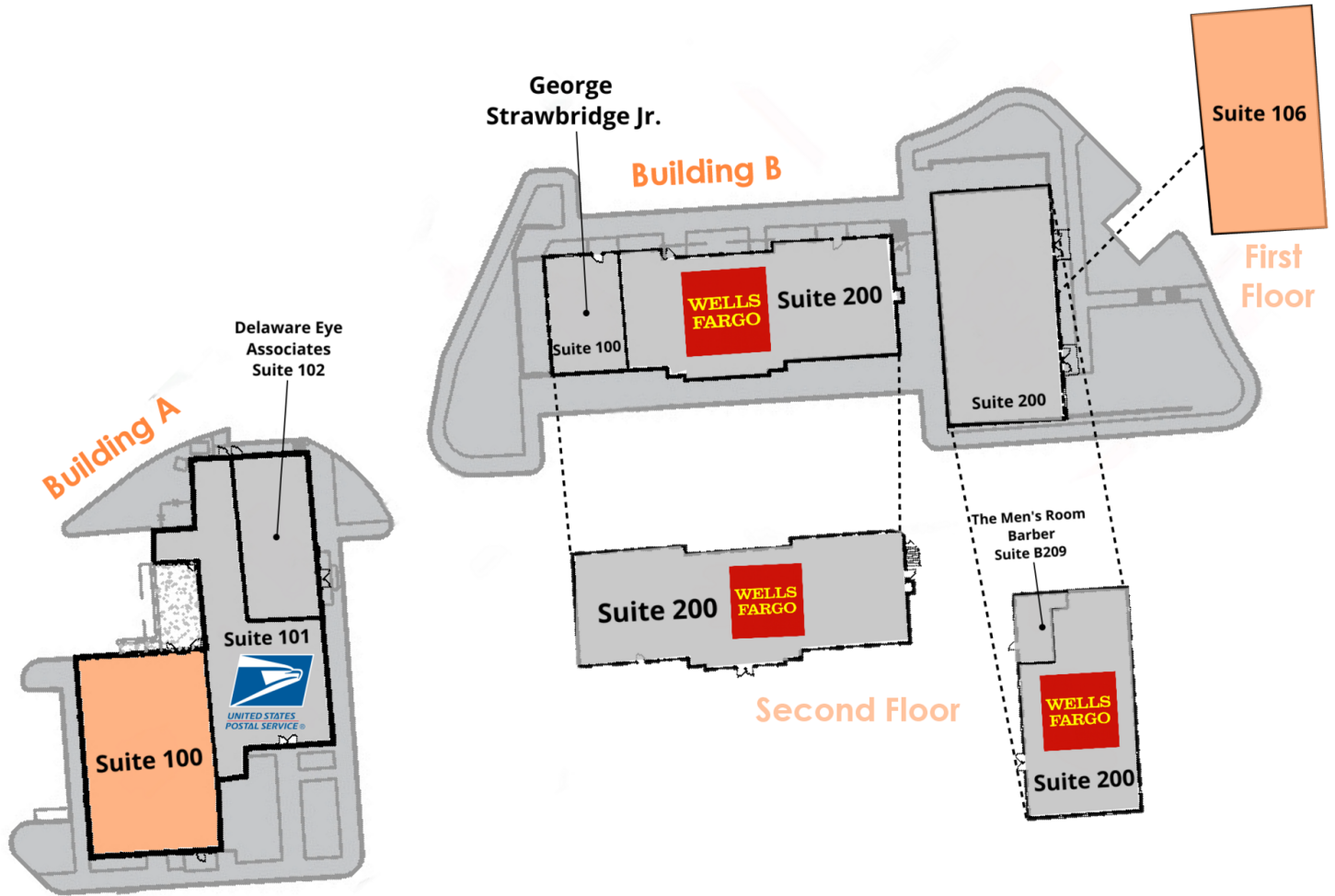
LEASING INQUIRIES

Matt Guers Director of Office Leasing 609.605.1843 mguers@pettinaro.com	Timothy "TJ" Spencer, CCIM Director of Retail Leasing 302.999.0708 tjspencer@pettinaro.com
--	---

FOR LEASE

Greenville Center

RETAIL / OFFICE | 3801 KENNETT PIKE | GREENVILLE, DE 19807



LEGEND

Available

Unavailable

PETTINARO

PETTINARO.COM

f PettinaroCRE/
company/pettinaro/
in
PettinaroCRE/
PettinaroCRE/

CORPORATE OFFICES

234 North James Street
Newport, DE 19804
302.999.0708

LEASING INQUIRIES

Matt Guers	Timothy "TJ" Spencer, CCIM
Director of Office Leasing	Director of Retail Leasing
609.605.1843	302.999.0708
mguers@pettinaro.com	tjspencer@pettinaro.com

FOR LEASE

Greenville Center

RETAIL / OFFICE | 3801 KENNETT PIKE | GREENVILLE, DE 19807

AVAILABLE SPACES

SUITE	TENANT	SIZE	TYPE	RATE
Building A - Suite 100	Available	3,240 SF	NNN	Negotiable
Building B - Suite 106	Available	3,712 SF	NNN	Negotiable



PETTINARO.COM

 PettinaroCRE/
 company/pettinaro/
 PettinaroCRE/

CORPORATE OFFICES

234 North James Street
Newport, DE 19804
302.999.0708

LEASING INQUIRIES

Matt Guers
Director of Office Leasing
609.605.1843
mguers@pettinaro.com

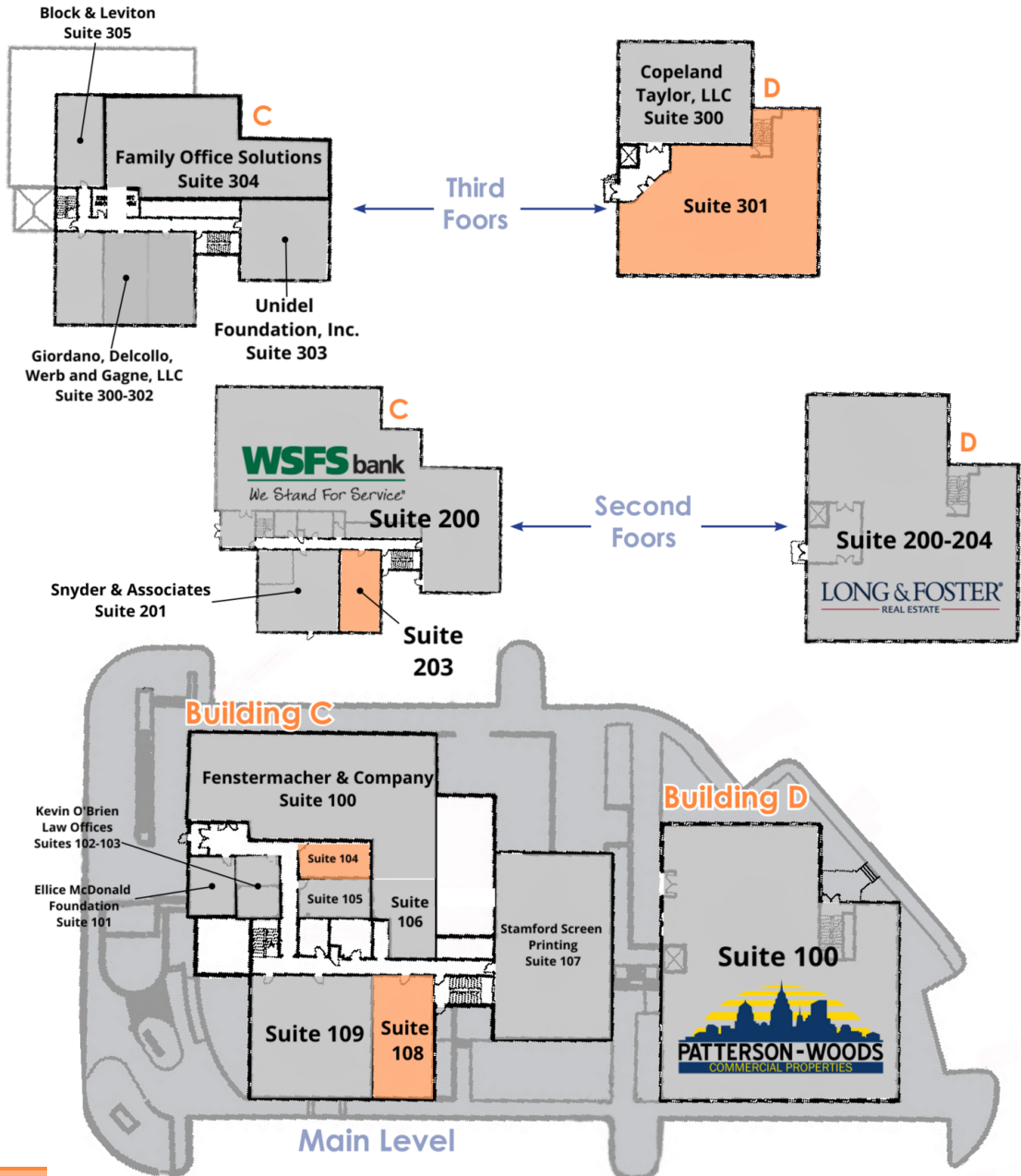
Timothy "TJ" Spencer, CCIM
Director of Retail Leasing
302.999.0708
tjspencer@pettinaro.com

FOR LEASE

Greenville Center

RETAIL / OFFICE | 3801 KENNETT PIKE | GREENVILLE, DE 19807

Buildings C & D



LEGEND

Available

Unavailable

PETTINARO

PETTINARO.COM

f PettinaroCRE/
company/pettinaro/
in
PettinaroCRE/
PettinaroCRE/

CORPORATE OFFICES

234 North James Street
Newport, DE 19804
302.999.0708

LEASING INQUIRIES

Matt Guers
Director of Office Leasing
609.605.1843
mguers@pettinaro.com

Timothy "TJ" Spencer, CCIM
Director of Retail Leasing
302.999.0708
tjspencer@pettinaro.com

FOR LEASE

Greenville Center

RETAIL / OFFICE | 3801 KENNETT PIKE | GREENVILLE, DE 19807

AVAILABLE SPACES

SUITE	TENANT	SIZE	TYPE	RATE
Building C - Suite 104	Available	330 SF	Modified Net	Negotiable
Building C - Suite 108	Available	880 SF	Modified Gross	Negotiable
Building C - Suite 203	Available	770 SF	Modified Gross	Negotiable
Building D - Suite 301	Available	4,010 SF	Modified Gross	Negotiable



PETTINARO.COM

 PettinaroCRE/
 company/pettinaro/
 PettinaroCRE/

CORPORATE OFFICES

234 North James Street
Newport, DE 19804
302.999.0708

LEASING INQUIRIES

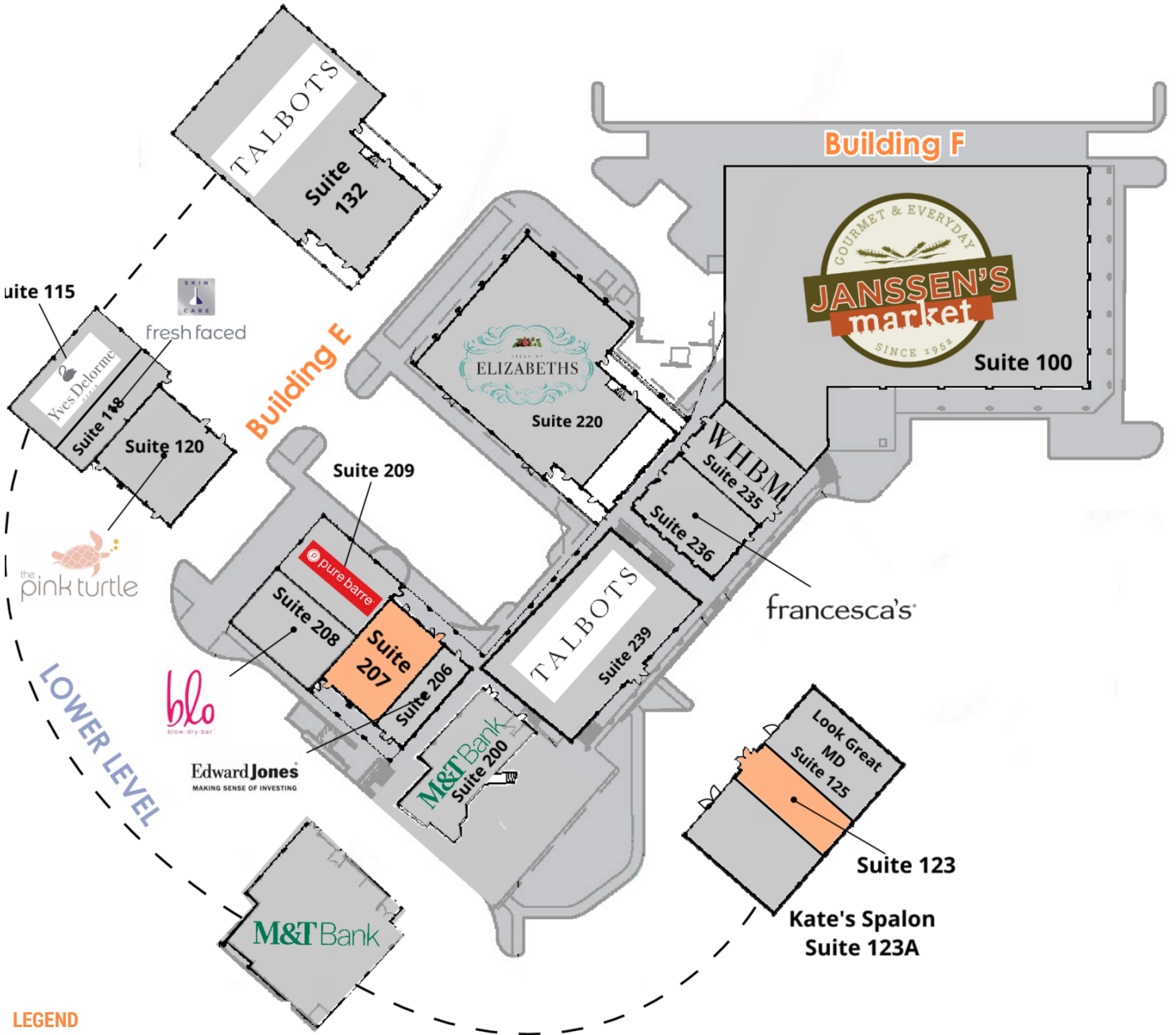
Matt Guers
Director of Office Leasing
609.605.1843
mguers@pettinaro.com

Timothy "TJ" Spencer, CCIM
Director of Retail Leasing
302.999.0708
tjspencer@pettinaro.com

FOR LEASE

Greenville Center

RETAIL / OFFICE | 3801 KENNETT PIKE | GREENVILLE, DE 19807



LEGEND

Available

Unavailable

PETTINARO

PETTINARO.COM

f PettinaroCRE/
 in company/pettinaro/
 Twitter PettinaroCRE/

CORPORATE OFFICES

234 North James Street
 Newport, DE 19804
 302.999.0708

LEASING INQUIRIES

Matt Guers
 Director of Office Leasing
 609.605.1843
 mguers@pettinaro.com

Timothy "TJ" Spencer, CCIM
 Director of Retail Leasing
 302.999.0708
 tjspencer@pettinaro.com

FOR LEASE

Greenville Center

RETAIL / OFFICE | 3801 KENNETT PIKE | GREENVILLE, DE 19807

AVAILABLE SPACES

SUITE	TENANT	SIZE	TYPE	RATE
Building E - Suite 123	Available	804 SF	Modified Gross	Negotiable
Building E - Suite 207	Available	1,477 SF	Modified Gross	Negotiable



PETTINARO.COM

 PettinaroCRE/
 company/pettinaro/
 PettinaroCRE/

CORPORATE OFFICES

234 North James Street
Newport, DE 19804
302.999.0708

LEASING INQUIRIES

Matt Guers
Director of Office Leasing
609.605.1843
mguers@pettinaro.com

Timothy "TJ" Spencer, CCIM
Director of Retail Leasing
302.999.0708
tjspencer@pettinaro.com

FOR LEASE

Greenville Center

RETAIL / OFFICE | 3801 KENNETT PIKE | GREENVILLE, DE 19807



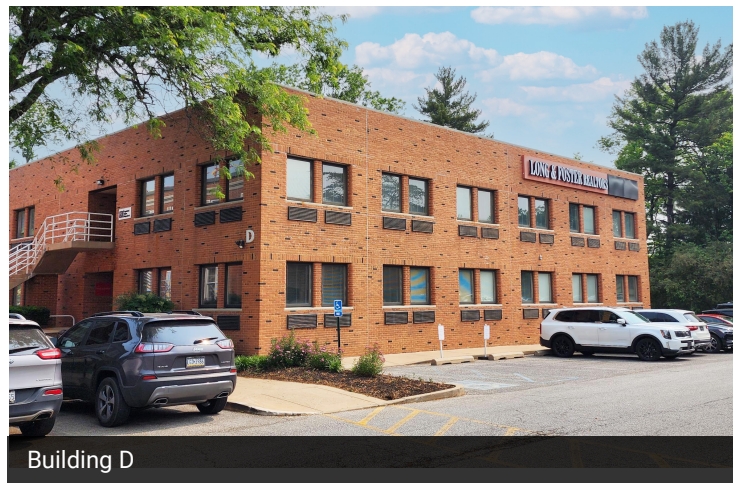
Building A



Building B



Building C



Building D



Building E



Building F - FULLY LEASED



PETTINARO.COM

[f](#) PettinaroCRE/
[in](#) company/pettinaro/
[t](#) PettinaroCRE/

CORPORATE OFFICES

234 North James Street
Newport, DE 19804
302.999.0708

LEASING INQUIRIES

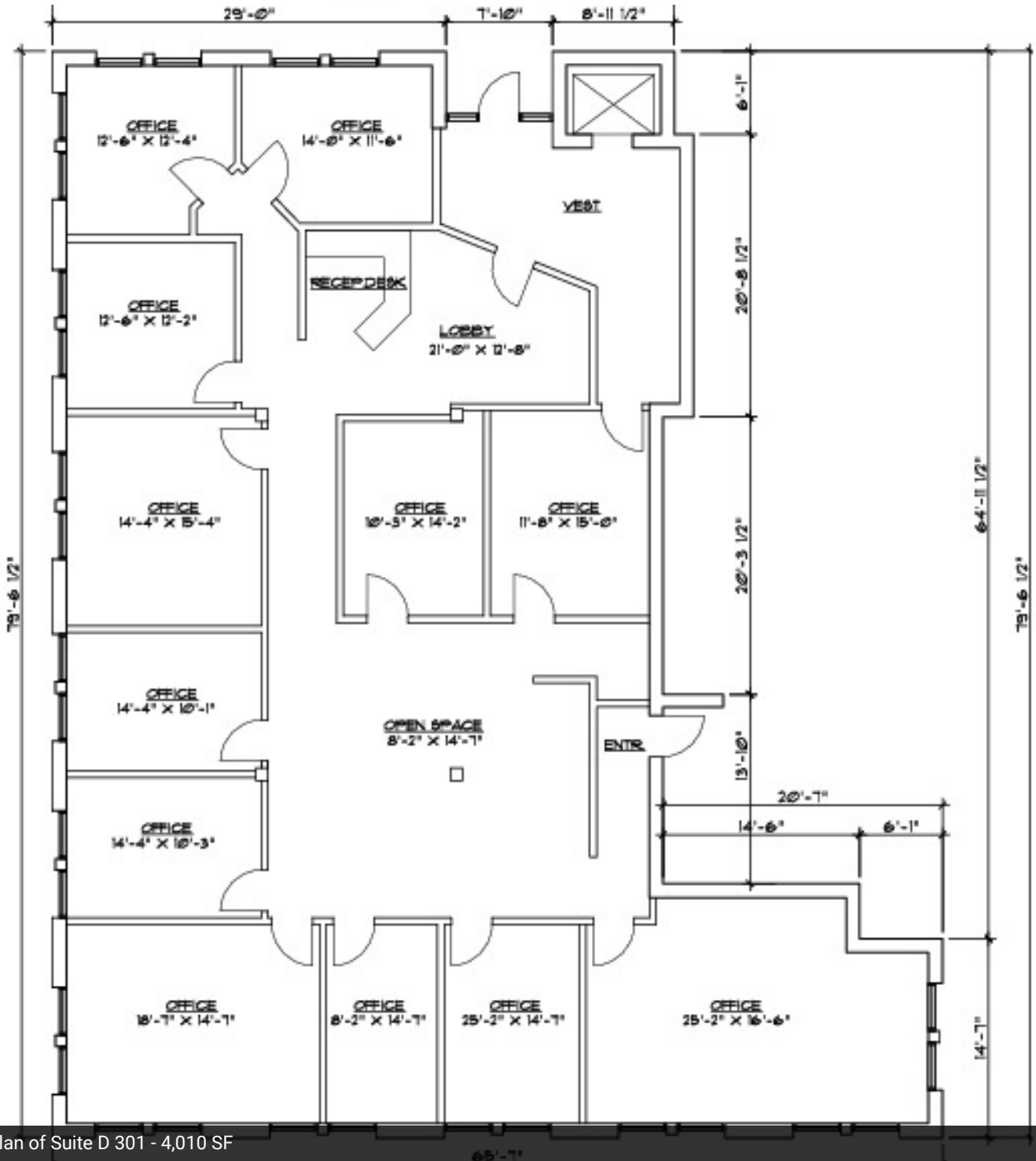
Matt Guers
Director of Office Leasing
609.605.1843
mguers@pettinaro.com

Timothy "TJ" Spencer, CCIM
Director of Retail Leasing
302.999.0708
tjspencer@pettinaro.com

FOR LEASE

Greenville Center

RETAIL / OFFICE | 3801 KENNETT PIKE | GREENVILLE, DE 19807



Floor Plan of Suite D 301 - 4,010 SF



PETTINARO.COM

f PettinaroCRE/
company/pettinaro/
in
PettinaroCRE/
PettinaroCRE/

CORPORATE OFFICES

234 North James Street
Newport, DE 19804
302.999.0708

LEASING INQUIRIES

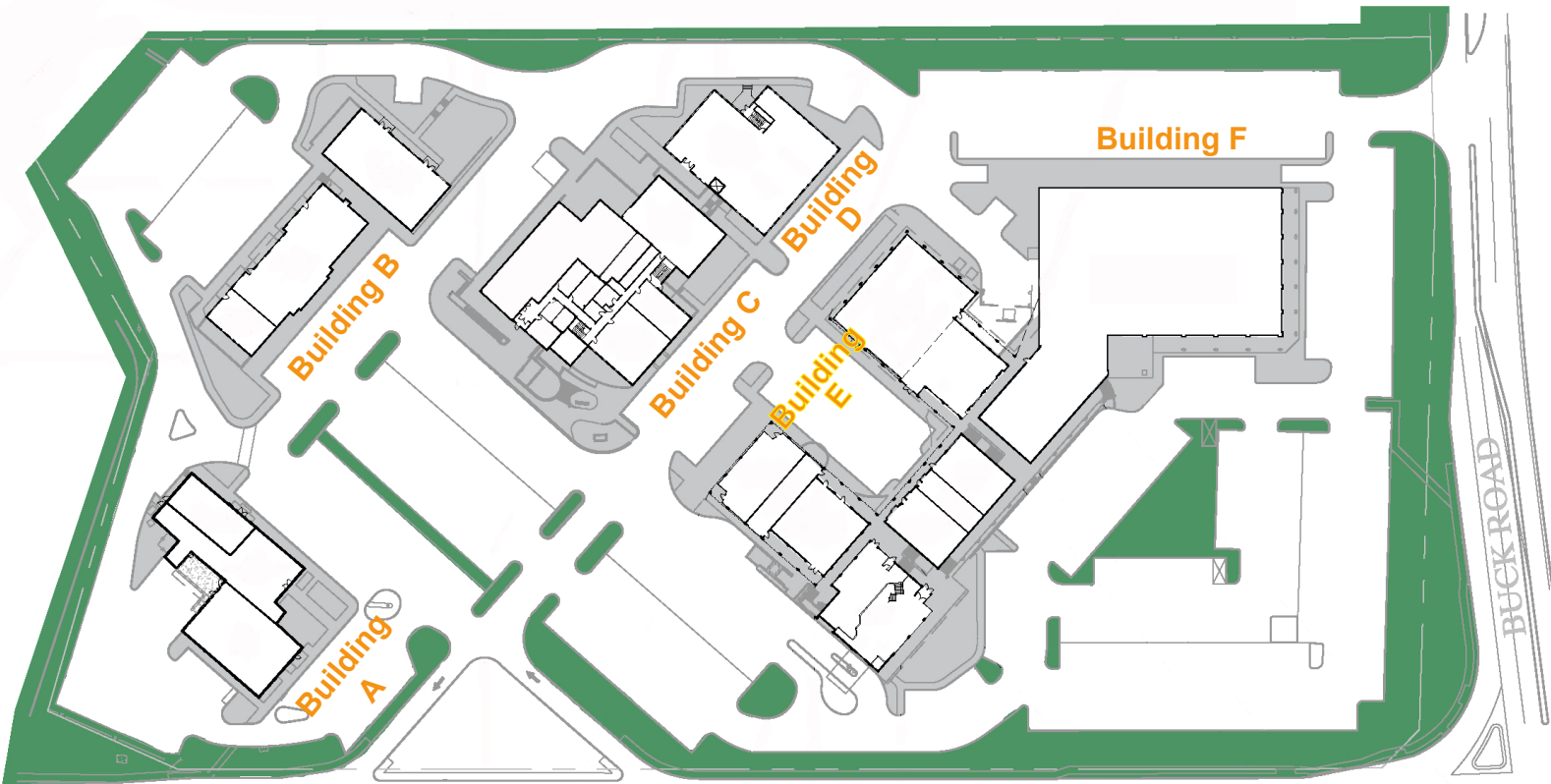
Matt Guers
Director of Office Leasing
609.605.1843
mguers@pettinaro.com

Timothy "TJ" Spencer, CCIM
Director of Retail Leasing
302.999.0708
tjspencer@pettinaro.com

FOR LEASE

Greenville Center

RETAIL / OFFICE | 3801 KENNETT PIKE | GREENVILLE, DE 19807



KENNETT PIKE DE ROUTE 52

PETTINARO

PETTINARO.COM

f PettinaroCRE/
in company/pettinaro/
t PettinaroCRE/

CORPORATE OFFICES

234 North James Street
Newport, DE 19804
302.999.0708

LEASING INQUIRIES

Matt Guers
Director of Office Leasing
609.605.1843
mguers@pettinaro.com

Timothy "TJ" Spencer, CCIM
Director of Retail Leasing
302.999.0708
tjspencer@pettinaro.com

FOR LEASE

Greenville Center

RETAIL / OFFICE | 3801 KENNETT PIKE | GREENVILLE, DE 19807



PETTINARO.COM

f PettinaroCRE/
company/pettinaro/
in
PettinaroCRE/
PettinaroCRE/

CORPORATE OFFICES

234 North James Street
Newport, DE 19804
302.999.0708

LEASING INQUIRIES

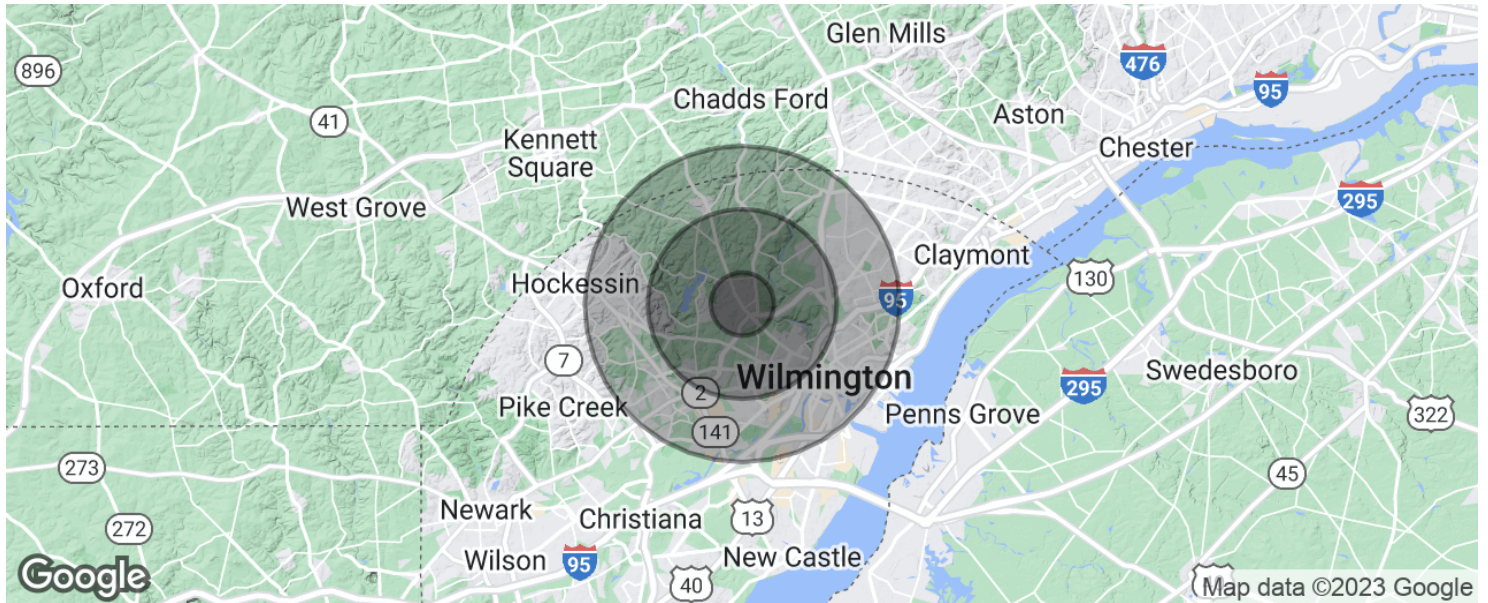
Matt Guers
Director of Office Leasing
609.605.1843
mguers@pettinaro.com

Timothy "TJ" Spencer, CCIM
Director of Retail Leasing
302.999.0708
tjspencer@pettinaro.com

FOR LEASE

Greenville Center

RETAIL / OFFICE | 3801 KENNETT PIKE | GREENVILLE, DE 19807



POPULATION

	1 MILE	3 MILES	5 MILES
Total population	1,225	51,889	175,900
Median age	47.4	38.5	38.6
Median age (Male)	45.3	37.1	36.9
Median age (Female)	49.4	41.1	40.7

HOUSEHOLDS & INCOME

	1 MILE	3 MILES	5 MILES
Total households	488	21,511	70,767
# of persons per HH	2.5	2.4	2.5
Average HH income	\$247,822	\$100,172	\$81,743
Average house value	\$803,436	\$360,588	\$308,505

* Demographic data derived from 2020 ACS - US Census

PETTINARO

PETTINARO.COM

[f](#) PettinaroCRE/
[in](#) company/pettinaro/
[t](#) PettinaroCRE/

CORPORATE OFFICES

234 North James Street
Newport, DE 19804
302.999.0708

LEASING INQUIRIES

Matt Guers
Director of Office Leasing
609.605.1843
mguers@pettinaro.com

Timothy "TJ" Spencer, CCIM
Director of Retail Leasing
302.999.0708
tjspencer@pettinaro.com