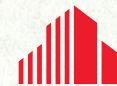




FOR LEASE

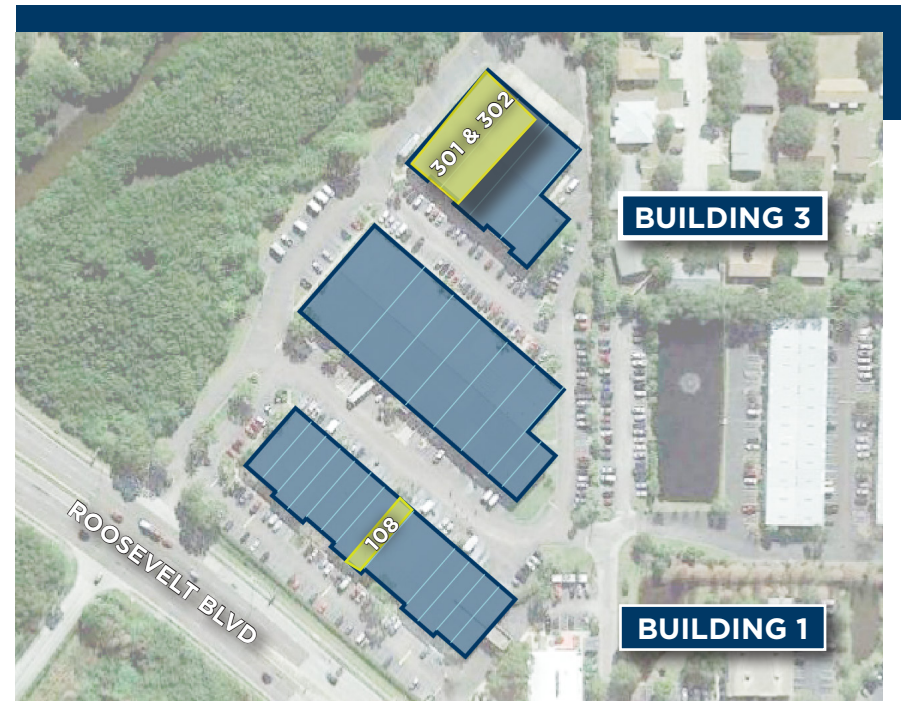
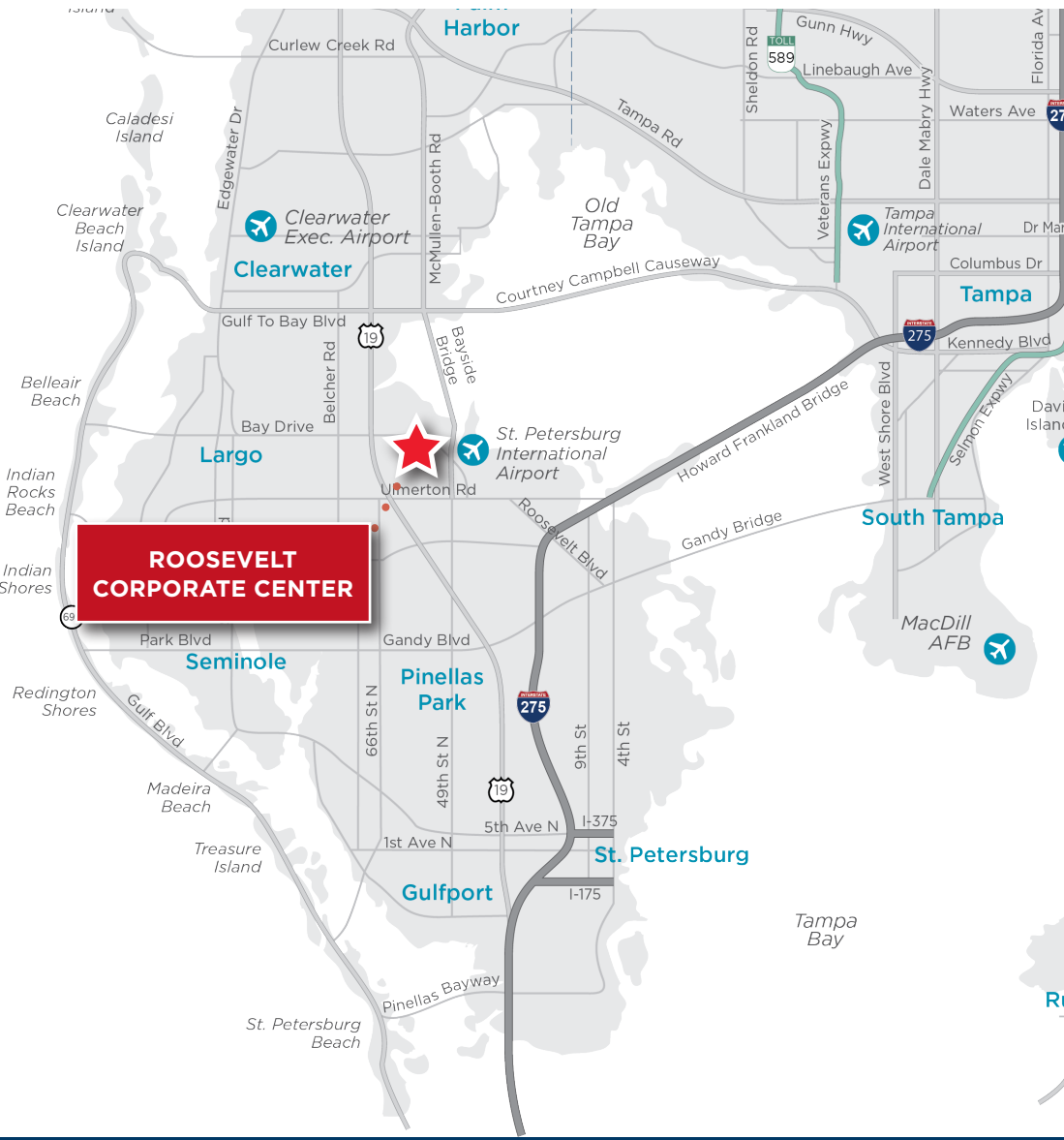
ROOSEVELT PARK

15201, 15251 & 15301 ROOSEVELT BLVD, CLEARWATER, FL 33760



CUSHMAN & WAKEFIELD

PROPERTY OVERVIEW



BUILDING HIGHLIGHTS

GRADE-LEVEL
& DOCK-HIGH
LOADING OPTIONS

16'-21'
CLEAR HEIGHT

1.8 MILES
FROM US HWY 19

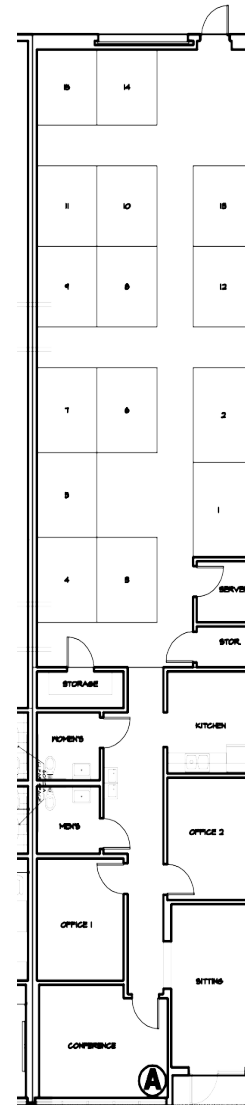
4.5 MILES
FROM I-275

CURRENT AVAILABILITIES

BUILDING 1 - UNIT 108

AVAILABLE SF	2,605 SF - 100% Office
LOADING	Capability to open up (1) Grade Level Door
AVAILABILITY	NOW
Notes	Ownership open to office modifications

SUITE 108

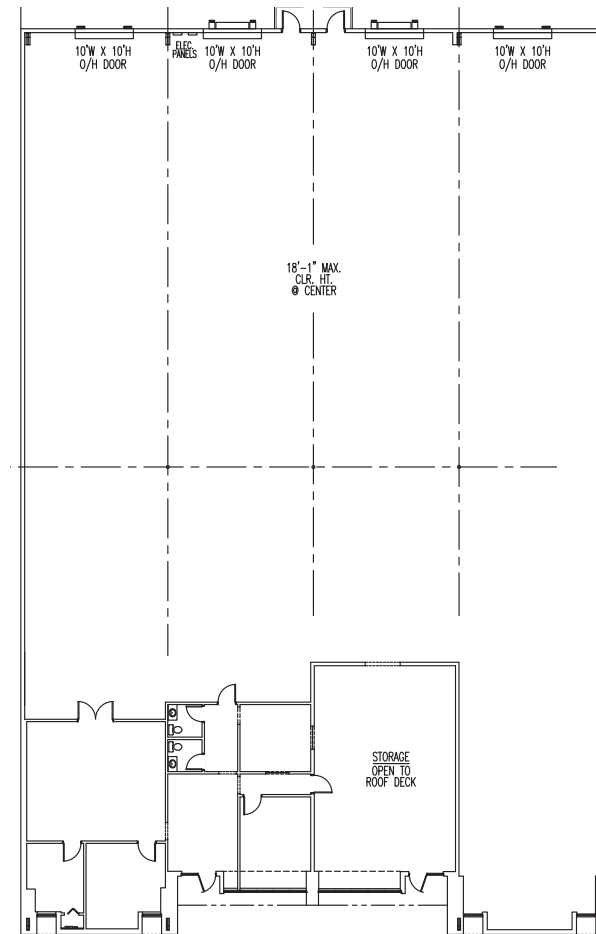


CURRENT AVAILABILITIES

BUILDING 3 - UNIT 301 & 302

AVAILABLE SF	15,357 SF
OFFICE SF	± 1,614 SF
LOADING	(4) Dock High Doors
CLEAR HEIGHT	18'
AVAILABILITY	NOW

SUITE 301 & 302



LOCATION MAP



Within two miles of the new Gateway Expressway.

Includes two new 4-lane elevated tolled roadways that provides express connections from US 19 to I-275 and from the Bayside Bridge to I-275.

<https://www.tampabaynext.com/projects/gateway-expressway/>



19 MILES TO
**DOWNTOWN
TAMPA**



1.3 MILES
TO
**ST.PETE-
CLEARWATER
INT'L**



12 MILES TO
**DOWNTOWN
ST. PETE**



SAM KOROLOS
Senior Associate
sam.korolos@cushwake.com
+1 704 989 1327

MELISSA WATTERWORTH
Associate
melissa.watterworths@cushwake.com
+1 813 599 2190

LISA ROSS, SIOR
Managing Director
lisa.ross@cushwake.com
+1 813 760 3209

©2024 Cushman & Wakefield. All rights reserved. The information contained in this communication is strictly confidential. This information has been obtained from sources believed to be reliable but has not been verified. NO WARRANTY OR REPRESENTATION, EXPRESS OR IMPLIED, IS MADE AS TO THE CONDITION OF THE PROPERTY (OR PROPERTIES) REFERENCED HEREIN OR AS TO THE ACCURACY OR COMPLETENESS OF THE INFORMATION CONTAINED HEREIN, AND SAME IS SUBMITTED SUBJECT TO ERRORS, OMISSIONS, CHANGE OF PRICE, RENTAL OR OTHER CONDITIONS, WITHDRAWAL WITHOUT NOTICE, AND TO ANY SPECIAL LISTING CONDITIONS IMPOSED BY THE PROPERTY OWNER(S). ANY PROJECTIONS, OPINIONS OR ESTIMATES ARE SUBJECT TO UNCERTAINTY AND DO NOT SIGNIFY CURRENT OR FUTURE PROPERTY PERFORMANCE.

