

169 HUDSON

TRIBECA RETAIL FOR LEASE

BETWEEN VESTRY AND LAIGHT STREET

CURRENT

169 HUDSON

SIZE

Ground Floor: 4,000 SF

Lower Level: 2,500 SF

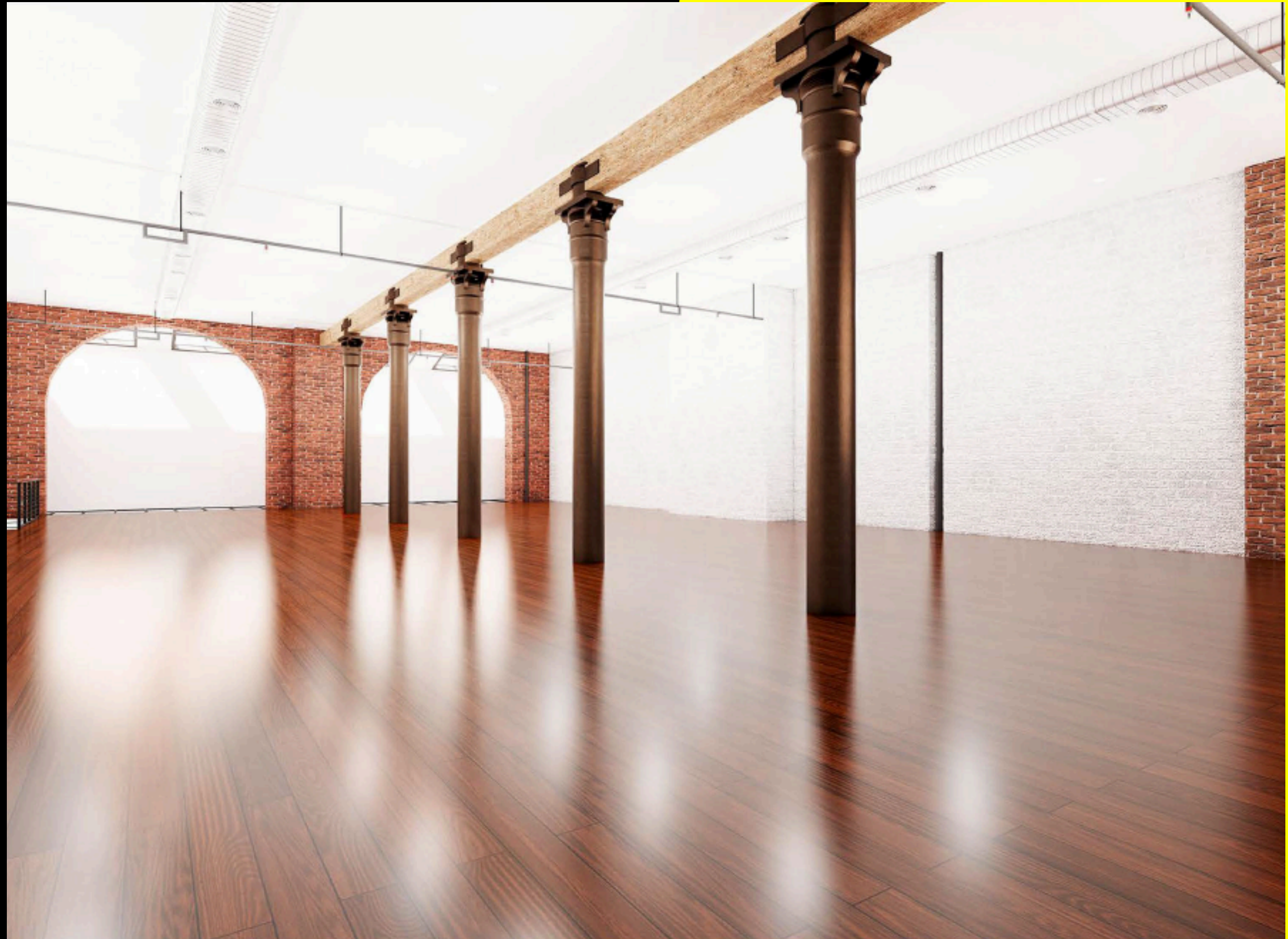
Total: 6,500 SF

ASKING RENT

\$38k/month

HIGHLIGHTS

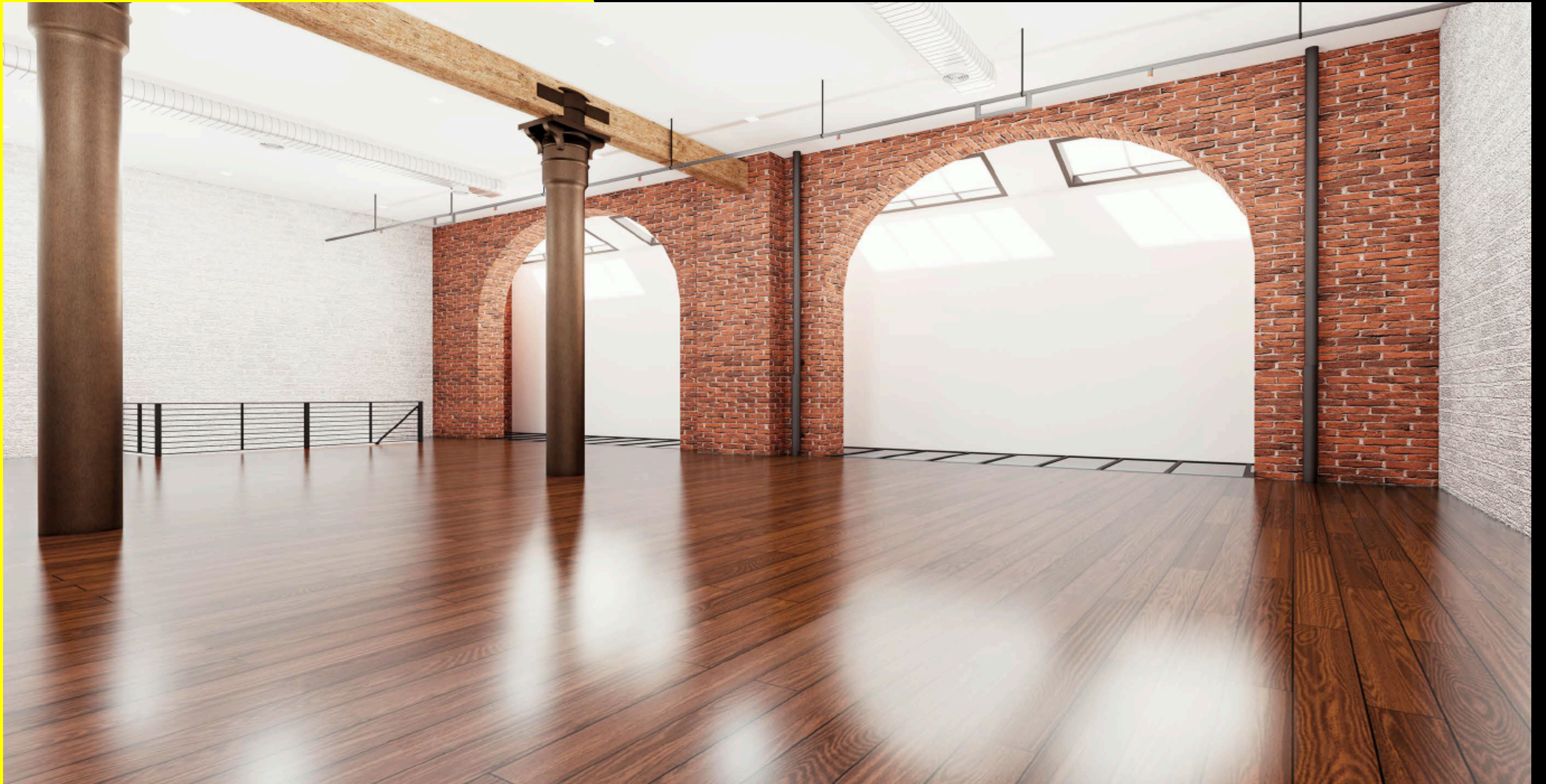
- Unique retail opportunity in the most prestigious and sought-after zip code in the city
- Grand 20-foot exposed brick arches with authentic loft architecture
- Ceiling heights:
 - Ground Floor: 12'
 - Lower Level: 9'
- Skylights and glass floor panels deliver natural light to the lower level
- Exposed steel columns, original materials, and refined industrial character
- 600 amps of power, dedicated HVAC, and private building systems
- Skylights and glass floors along the rear of space allow for ample light to reach lower level
- Ideal for flagship retail, gallery, showroom, creative studio, or professional offices (no food use)



169 HUDSON



169 HUDSON



169 HUDSON



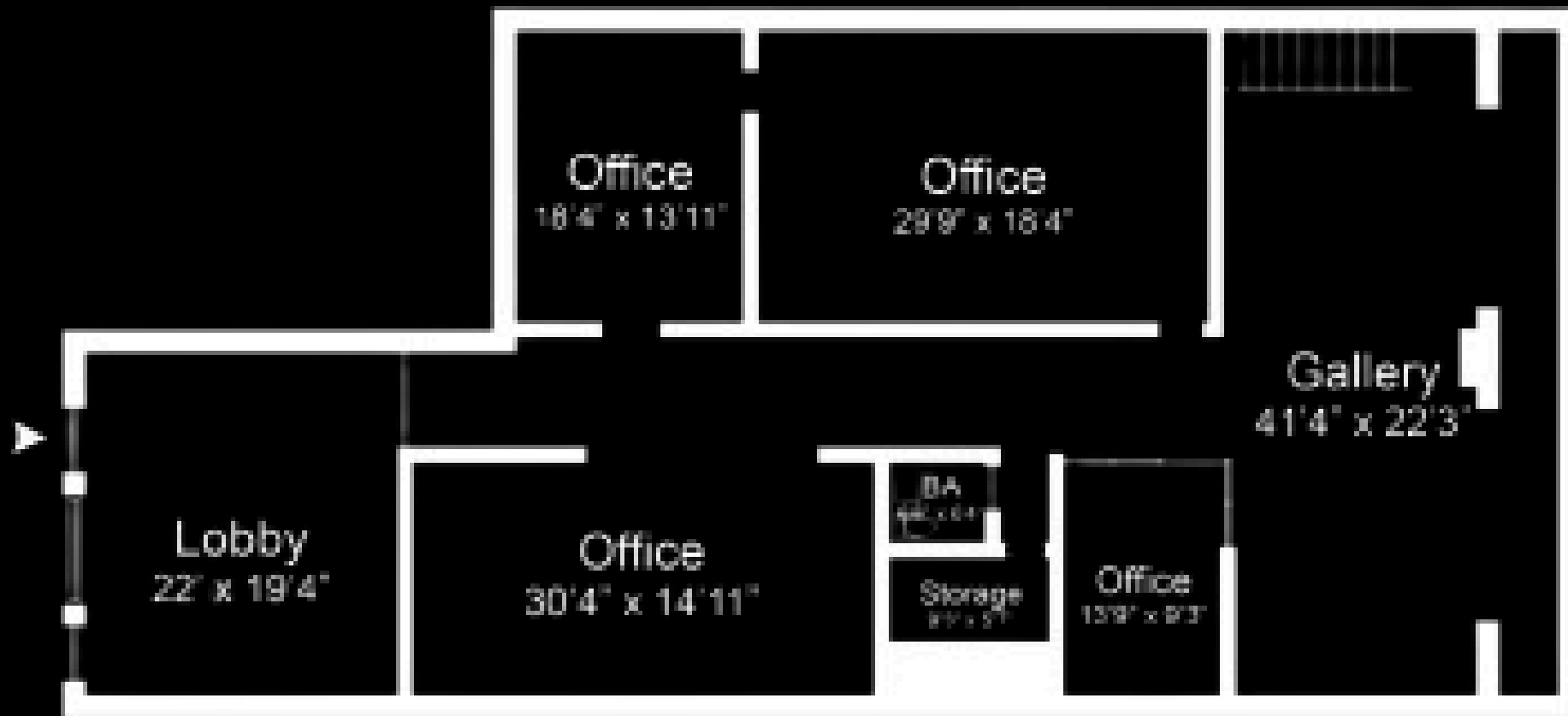
169 HUDSON



169 HUDSON

FLOOR PLANS

GROUND FLOOR



[VIRTUAL TOUR](#)

LOWER LEVEL



[VIRTUAL TOUR](#)



CONTACT

MICHAEL SEGERMAN
msegerman@currentadvisors.com
516.297.3337

CURRENT[®]
Real Estate Advisors