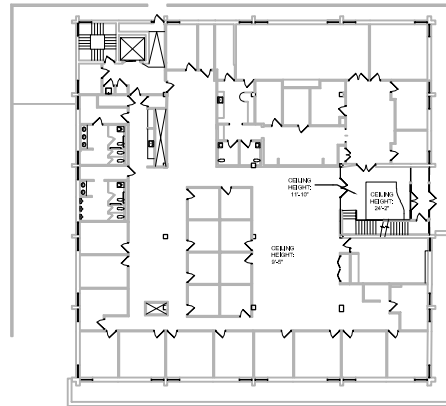
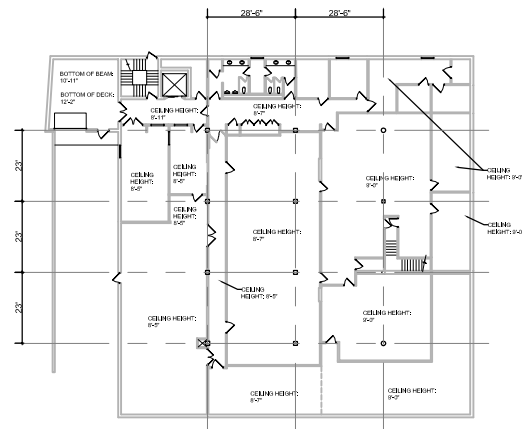


LEVEL 2



LEVEL 1



LOWER LEVEL

WSDEVELOPMENT

Notes:

1. Tenant (and/or Tenant architect) is responsible for field verification of all physical conditions.
2. Tenant architect is responsible for code compliance and life safety pertaining to the Tenant's space.

LOD Clarifications:

1. LOD is **preliminary** until indicated as final.
2. Revisions may involve, but are not limited to: demising, columns, storefront, access/egress, and utilities.
3. Tenant is advised that its fit-up plan and design for construction can only be based upon Landlord issued final construction documents (CD's), and/or field verification of physical conditions. Any fit-up plan or design based upon any LOD can only be considered preliminary and not for construction.
4. For detailed description Landlord and Tenant scope of work, see Exhibit B.

LOD

Lease Outline Drawing

Tenant Approval:

Signature _____
Date _____

Chestnut Hill Office Park
Brookline, MA

1280 Boylston Street
42,095 SF
September 30, 2021