

EXPANSIVE[®]
w o r k s p a c e

Dana Goncalves 321-204-1191
expansive.com | (877) 301-6217



Why Expansive?

At Expansive, we own the buildings we develop and operate. This allows us to share the incomparable advantages of a fully-integrated, nationwide property owner with our clients, including our four cornerstones of workspace success:

Vibrant Inclusivity

To foster community and build relationships

Unparalleled Flexibility

To realize your vision even as it evolves

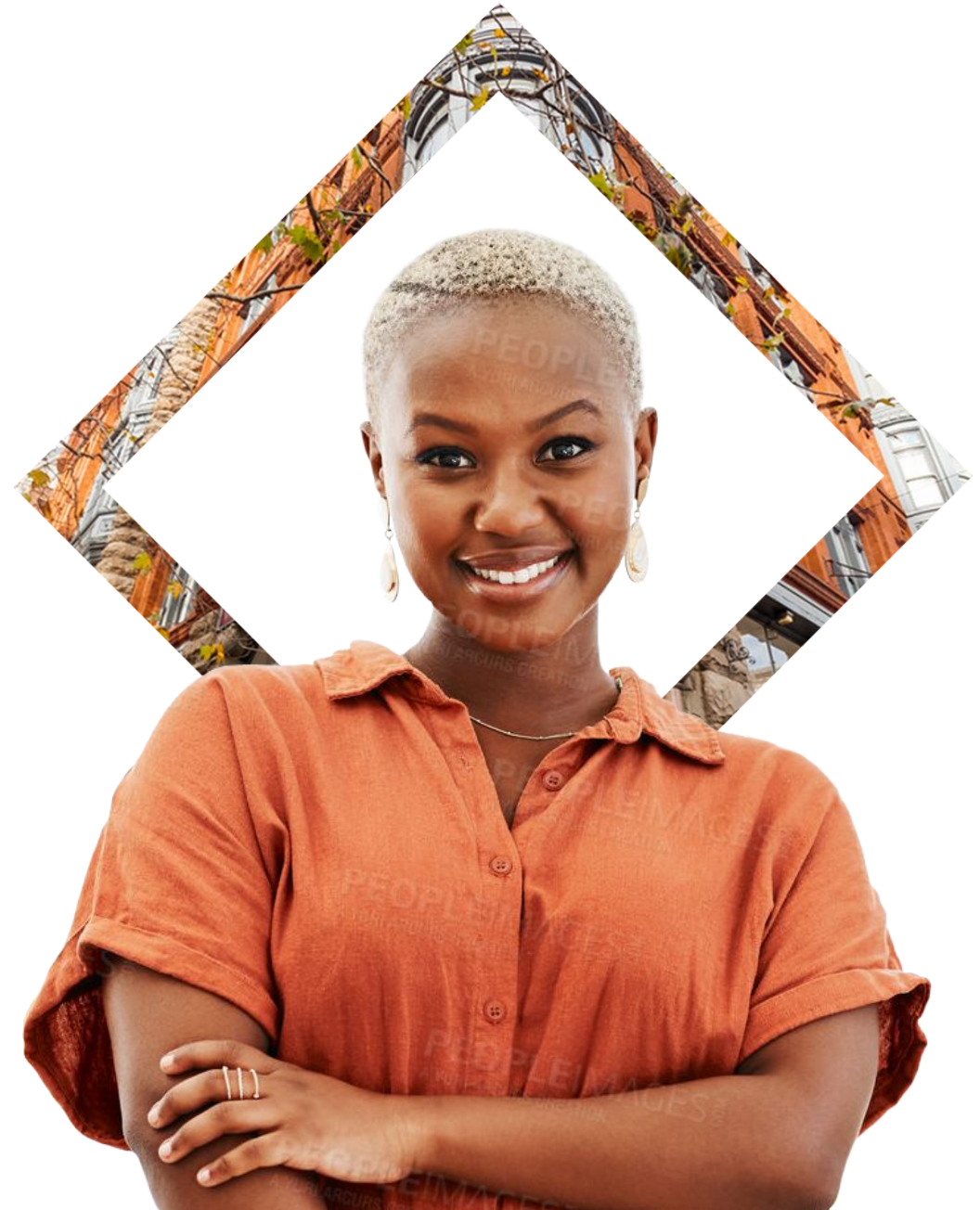
Maximum Stability

To establish confidence in an uncertain world

Comprehensive Value

To drive cost efficiencies and trust

Enterprise Clients We Serve



Expansive Workspace Angebilt Building

37 N. Orange Ave., Orlando, FL

Once the tallest building in Orlando and home to the city's finest hotel, the historic Angebilt Building has been a local landmark ever since its opening in 1923. Now converted into an office building, the Angebilt Building features executive suites, private offices, office space for lease, and virtual offices in Orlando with state-of-the-art technology and amenities. This elegant red-brick building offers entrepreneurs, small businesses, and enterprise companies a prestigious base at the heart of the Central Business District. Read on to see the highlights and benefits of our prime office space in Orlando.

Shared Amenities

3 Conference Rooms

- [1] 2nd Floor
- [1] 3rd Floor
- [1] 8th Floor

10 Phone Booths

- [3] 2nd Floor
- [4] 3rd Floor
- [3] 8th Floor

1 Expansive Lounge

- Located on 2nd^h Floor



Center Photos



[Check Out Our Community!](#)



Proposed Solution Suite 400E

Layout Breakdowns

13 Workstations

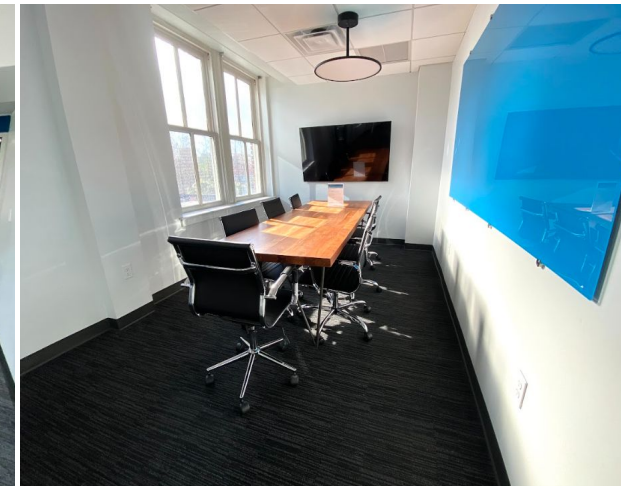
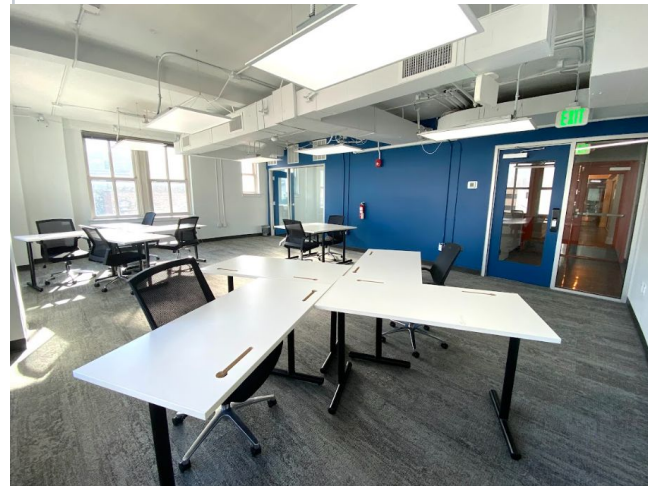
-Desks And Chairs
Included

1 Kitchenette

- Refrigerator
- Dishwasher
- Microwave

1 Private Conference Room

Keyless Entry
Smart TV
Blue Glass Dry Erase Board



All-Inclusive Pricing

400E | 916 Square Feet

- Accommodates up to 13 workstations
- 12 month agreement- \$3,960
- 24 month agreement-\$3,960 per month with one free promo month
-

Suite agreement process:

- First months rent
- Retainer – equals one months rent
- One time Setup fee - \$750



Expansive ClubSuite® Membership Includes:

- 24/7 secure building access with keyless entry
- Business mailing address
- Furnished with as many desks and chairs as needed
- Dedicated Meeting room with Smart TV
- Company logo on Suite Door, as well as member directory listing on Expansive App
- On-site management
- Access to Expansive amenities, including:
 - Mothers room
 - Balcony patio
 - Community App
 - Meeting and event facilities
 - Mail & package receipt services
 - Community lounge area with unlimited espresso, coffee and tea
 - Community networking events



Special Event Amenities

Available Across the
Expansive Network

Impress your team and clients!

- Networking Events
- Company Conference
- First floor, lobby areas
- Recruiting Fair
- Team Retreats



Visit expansivevenues.com
to See Location and Venue Details



Your Membership Includes Access to All Locations

34

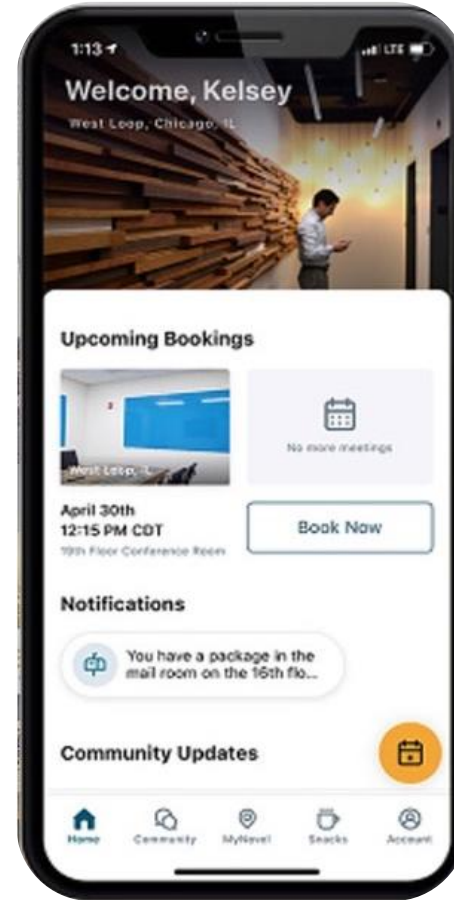
Cities

3.8M

SF

45

Locations



Seattle, WA



Cincinnati, OH



Denver, CO



Minneapolis, MN

What Happens Next

We invite you to proceed in two simple steps.

1 Choose your solution

Act now to avoid disappointment. We operate on a first-come, first-served basis.

2 Easy online sign up

Once you have chosen your preference option, we will send you a one page agreement which is just one click to sign.

Further questions? Please contact us if we haven't given you the right solution here. Talk to us. Other options are available.

Email: info@expansive.com or call **877.301.6217**

