

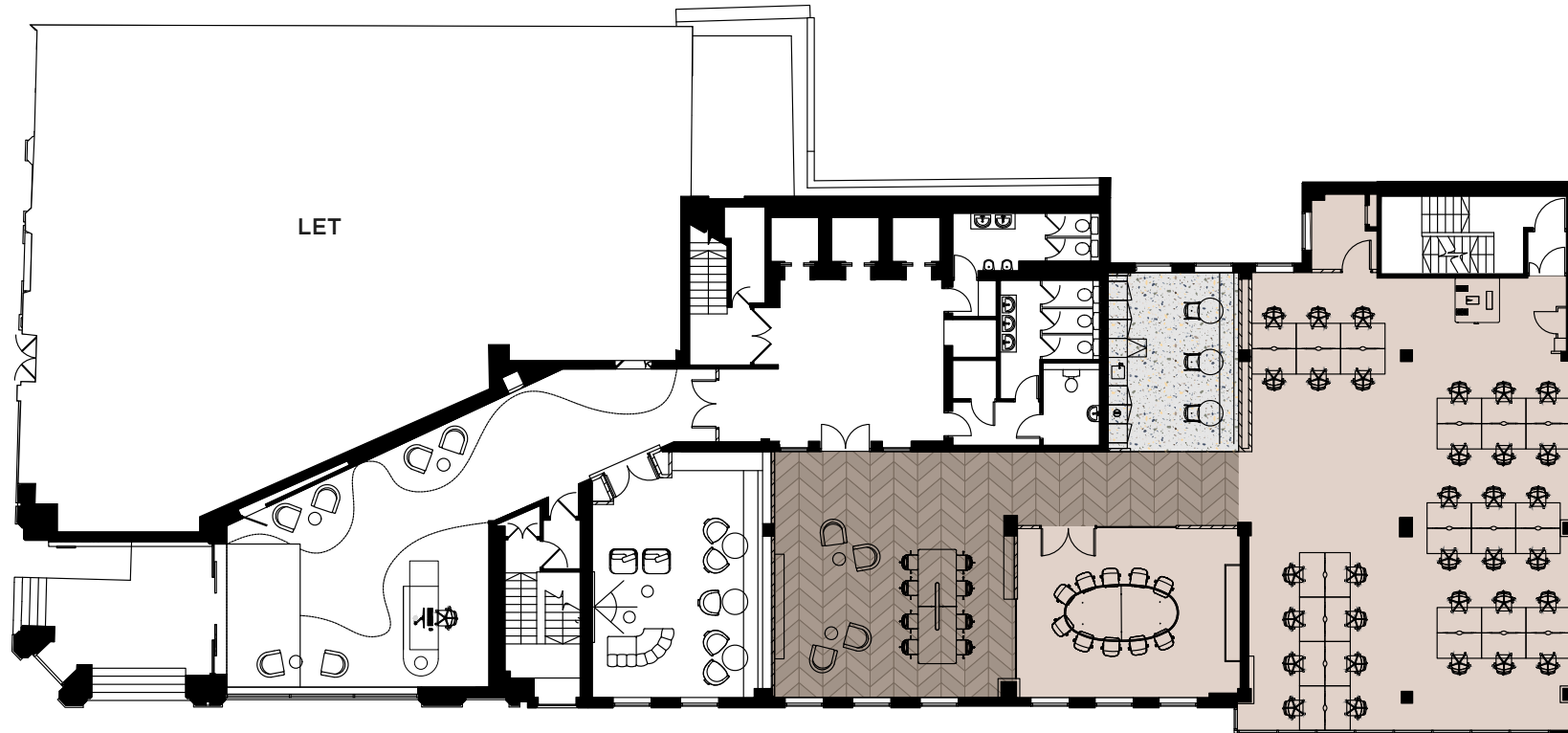
# FLOOR PLANS

GROUND (FULLY FITTED)

3,154 SQ FT

**FULL FITOUT INCLUDES:**

- 32 Desks
- Collaboration spaces
- Zoom pod
- Welcome zone
- Kitchen & social space
- 10 Person meeting room
- Indicative comms room location



# FLOOR PLANS

FIFTH (FULLY FITTED)

5,637 SQ FT

**FULL FITOUT INCLUDES:**

- 42 Desks
- Business hub
- 2 Zoom pods
- Meet & greet area
- Kitchen & social space
- 10 Person formal meeting room
- 6 Person formal meeting room
- 4 Person informal meeting room
- Indicative comms room location

