



**INDUSTRIAL SPACE FOR LEASE**

# CENTRAL PARK BUSINESS CENTER

10390–10422 Central Park Drive, Manassas, Virginia

**STREAM**

**BOUNDARY**  
COMPANIES

# PROPERTY OVERVIEW



Property	Central Park
Address	10390-10422 Central Park Dr
Year Built	2001
Buildings / SF	Three Buildings / 32,520 RSF
Parking Ratio	4.6 per 1,000 SF
Clear Height	18'
Zoning (City of Manassas)	I-2 (Heavy Industrial)

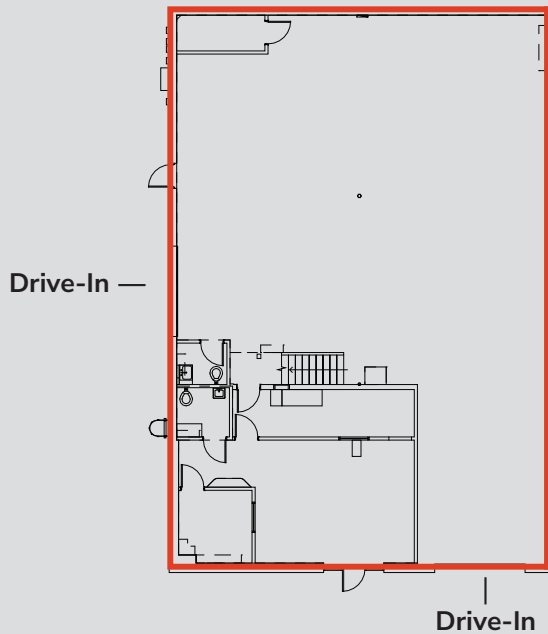


# VACANCY

10404 Central Park Drive



GROUND FLOOR



## Suite 10404

Size 3,750 SF

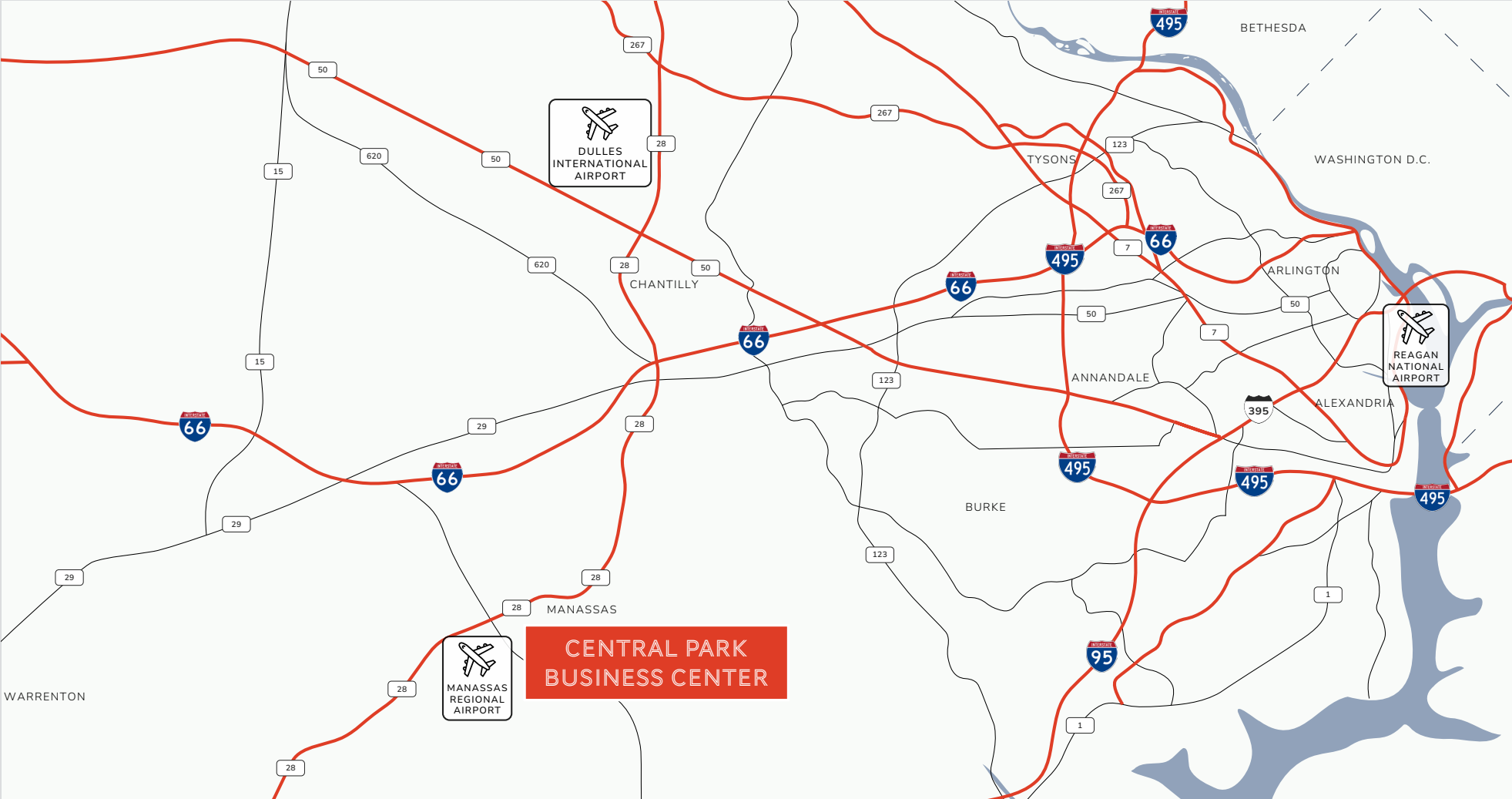
Clear Height 18'

Loading 2 Drive-Ins

# AMENITIES MAP



# REGIONAL MAP



## LOCATION & TRAVEL TIMES

MANASSAS AIRPORT	2.6 MI	495 BELTWAY	21.9 MI
I-66	6.4 MI	TYSONS CORNER	25.0 MI
I-95	16.2 MI	WASHINGTON, D.C.	33.5 MI
DULLES AIRPORT (IAD)	21.1 MI	BALTIMORE	72.9 MI

# CONTACT US

## ANDREW HASSETT

703.705.2921

[andrew.hassett@streamrealty.com](mailto:andrew.hassett@streamrealty.com)

## CAULLEY DERINGER

703.705.2907

[caulley.deringer@streamrealty.com](mailto:caulley.deringer@streamrealty.com)

## STEVE CLOUD

703.705.2918

[steve.cloud@streamrealty.com](mailto:steve.cloud@streamrealty.com)

## ANABELLE GARTLAND

703.574.3621

[anabelle.gartland@streamrealty.com](mailto:anabelle.gartland@streamrealty.com)



7900 Tysons One Place  
Suite 280  
McLean, VA 22102

Copyright © 2024 Stream Realty Partners, All rights reserved.

The information contained herein was obtained from sources believed reliable; however, Stream Realty Partners, L.P. make no guarantees, warranties, or representations as to the completeness or accuracy thereof. The presentation of this property is submitted subject to errors, change of price, or conditions, prior sale or lease, or withdrawal without notice.

**STREAM**

**BOUNDARY**  
COMPANIES