



For Lease

# Merchants Walk One

11850 & 11870 Merchants Walk, Newport News, VA

Easy access to I-64, the Newport News/Williamsburg International Airport and Public Transportation

### Spaces ranging from 1,149 SF - 1,968 SF

- 34,332 SF building
- Tenants include GSA, Merrick & Company, Whitman, Requardt & Associates, LLP
- Shopping and dining within walking distance

#### Contact us:

##### Perry Frazer

Executive Vice President  
+1 757 228 1833  
perry.frazer@colliers.com

##### Brian Davidson

Vice President  
+1 757 228 1809  
brian.davidson@colliers.com

##### Patrick McCormick

Associate  
+1 757 213 8140  
patrick.mccormick@colliers.com

#### Colliers

150 West Main St | Suite 1100  
Norfolk, VA 23510  
P: +1 757 490 3300  
colliers.com

Copyright © 2024 Colliers International.

Information herein has been obtained from sources deemed reliable, however its accuracy cannot be guaranteed. The user is required to conduct their own due diligence and verification.

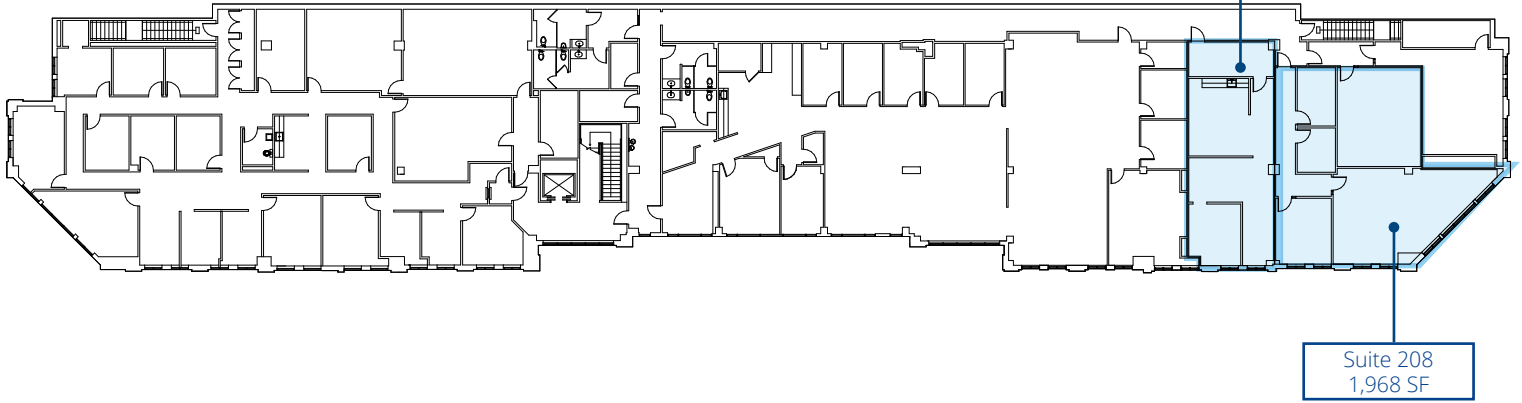
# Merchants Walk One

## Available Suites

Suite 206 1,149 SF

Suite 208 1,968 SF

2nd Floor



# Merchants Walk One



## Demographics



2022 population

**86,785**

(3 miles)

**177,134**

(5 miles)

**385,734**

(10 miles)

Daytime population

**87,788**

(3 miles)

**168,147**

(5 miles)

**396,502**

(10 miles)



2022 Average Household Income

**\$94,104**

(3 miles)

**\$96,177**

(5 miles)

**\$90,532**

(10 miles)

Number of households

**35,658**

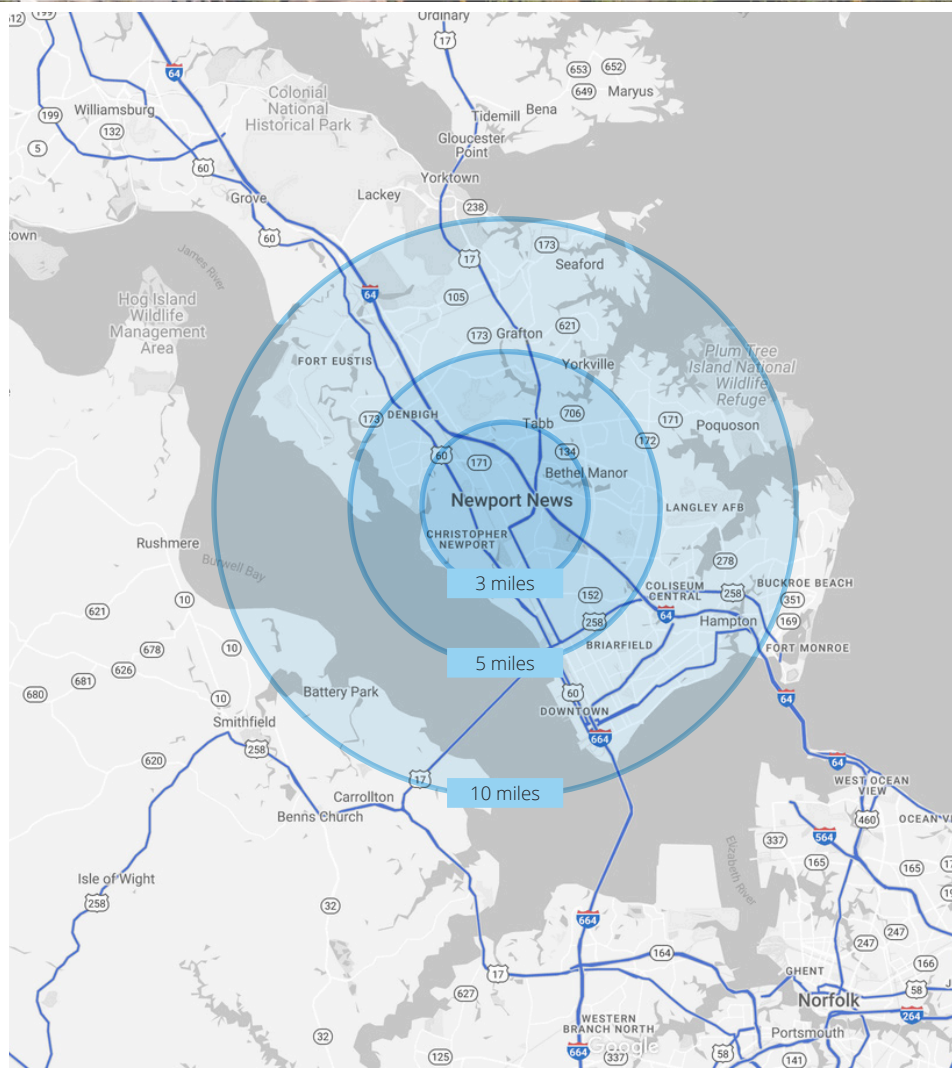
(3 miles)

**73,305**

(5 miles)

**156,212**

(10 miles)



# Merchants Walk One



**Contact us:**

**Perry Frazer**  
Executive Vice President  
+1 757 228 1833  
perry.frazer@colliers.com

**Brian Davidson**  
Vice President  
+1 757 228 1809  
brian.davidson@colliers.com

**Patrick McCormick**  
Associate  
+1 757 213 8140  
patrick.mccormick@colliers.com

---

**Colliers**  
150 West Main St | Suite 1100  
Norfolk, VA 23510  
P: +1 757 490 3300