

**190 MAIN STREET
PATERSON, NJ**



FOR LEASE

**Iconic building on the corner of
Main St & Ellison Street**

Currently: Unique Thrift Store

Ground Floor: 27,969 sf

Selling Lower Level: 32,500 sf

Second Floor: 13,540 sf

TOTAL: 74,009 sf

Divisions Considered

Ground Floor Frontage: 52.5'

Second Floor Frontage: 82'-8" on Main St.
221'-4" on Ellison St.

Nearby Tenants: Bank of America, Burlington,
Snipes, Marshalls, Foot Locker, Oportun,
Rainbow, M&T Bank, Easy Pickens, Spectrum,
7Eleven

Ralph Hanan

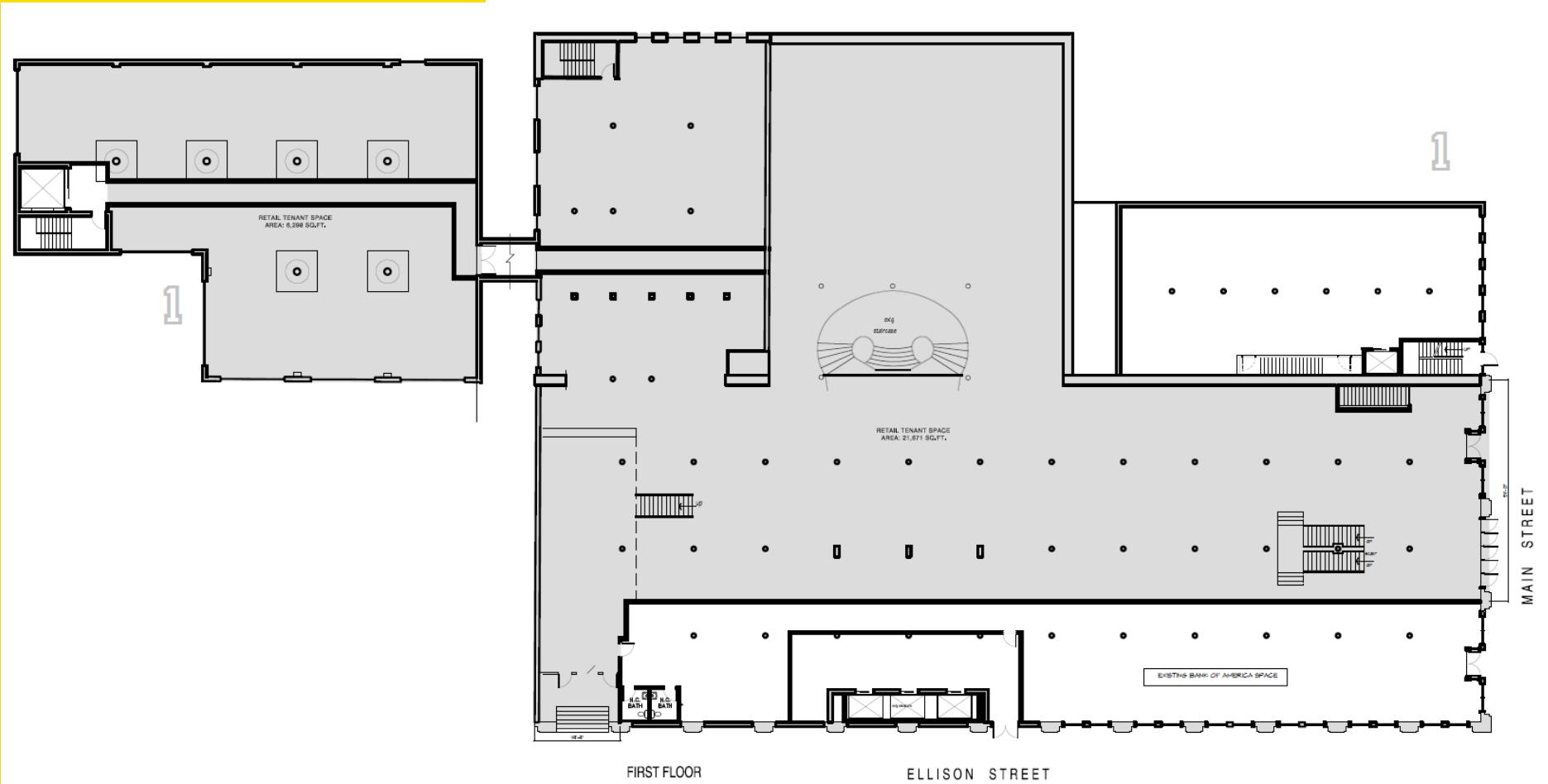
Ph: 908-433-6624

ralph.s.hanan@gmail.com

FOR LEASE

**190 MAIN STREET
PATERSON, NJ**

Ground Floor



Ralph Hanan

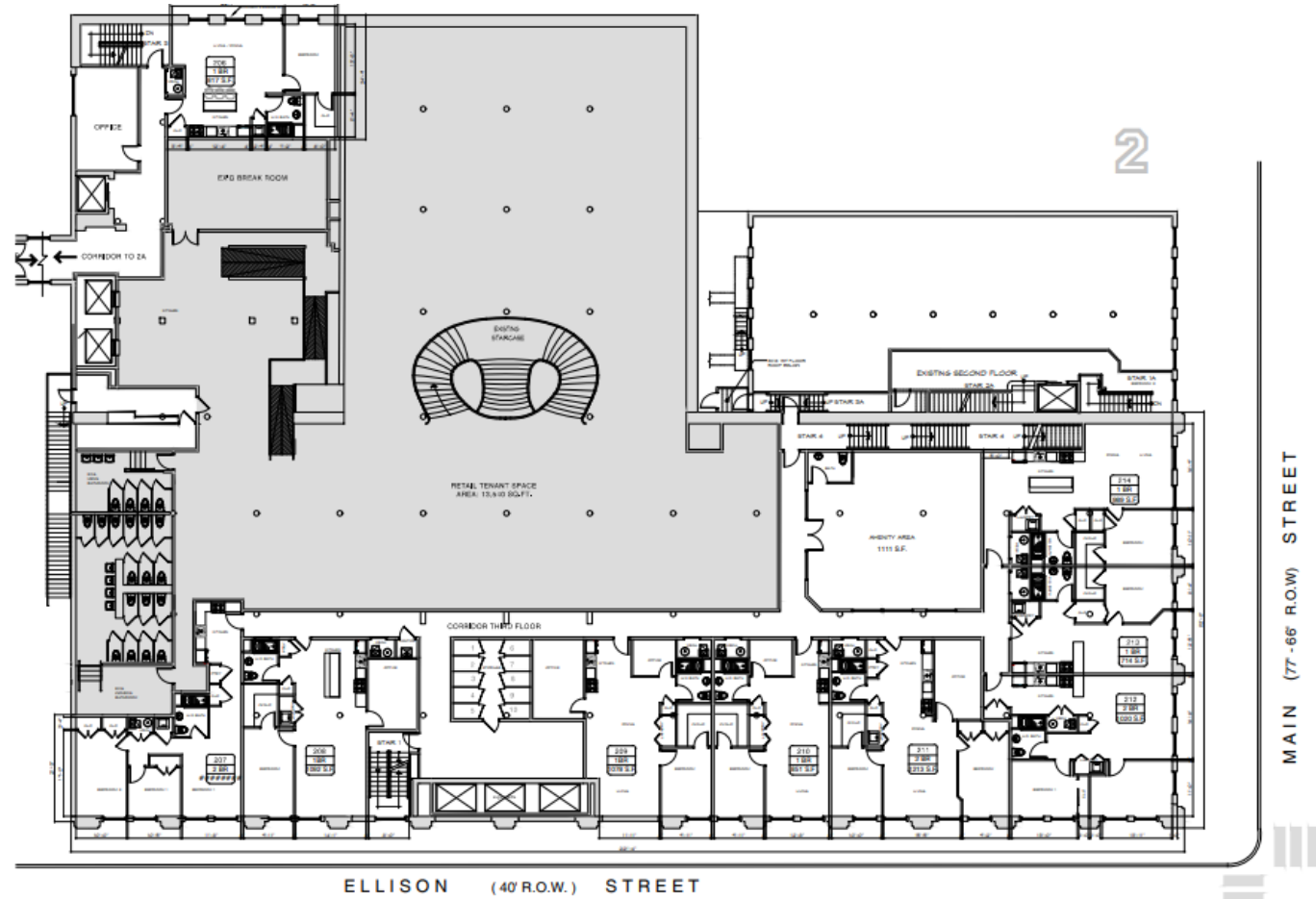
Ph: 908-433-6624

ralph.s.hanan@gmail.com

FOR LEASE

**190 MAIN STREET
PATERSON, NJ**

Second Floor



Ralph Hanan

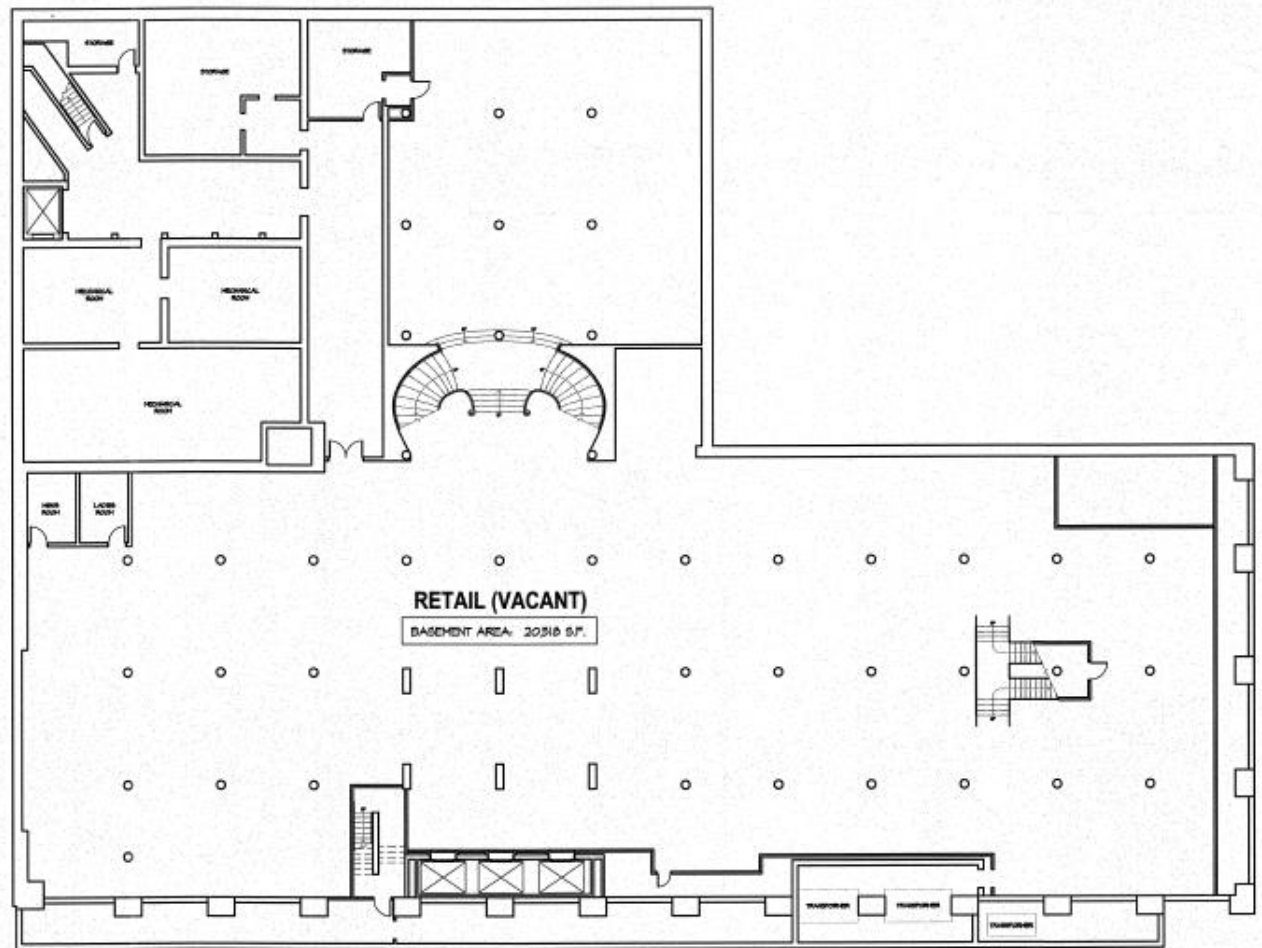
Ph: 908-433-6624

ralph.s.hanan@gmail.com

FOR LEASE

**190 MAIN STREET
PATERSON, NJ**

Lower Level



Ralph Hanan

Ph: 908-433-6624

Ralph.s.hanan@gmail.com