

MEDICAL SPACE FOR LEASE

12626 Riverside Dr • Valley Village | CA



Todd Wuschnig
Principal
818.933.0301
twuschnig@lee-re.com
DRE 01367230

Jennifer Donaldson
Principal
818.933.0347
jdonaldson@lee-re.com
DRE 01317737

No warranty or representation is made to the accuracy of the foregoing information. Terms of sale or lease and availability are subject to change or withdrawal without notice. CID 01191898

12626 Riverside Dr • Valley Village | CA MEDICAL SPACE AVAILABLE FOR LEASE



PROPERTY DETAILS

Lease Rate: \$3.25/SF FSG
Parking: \$100.00 per car, per month
Term: 3-5 Years

AVAILABILITY

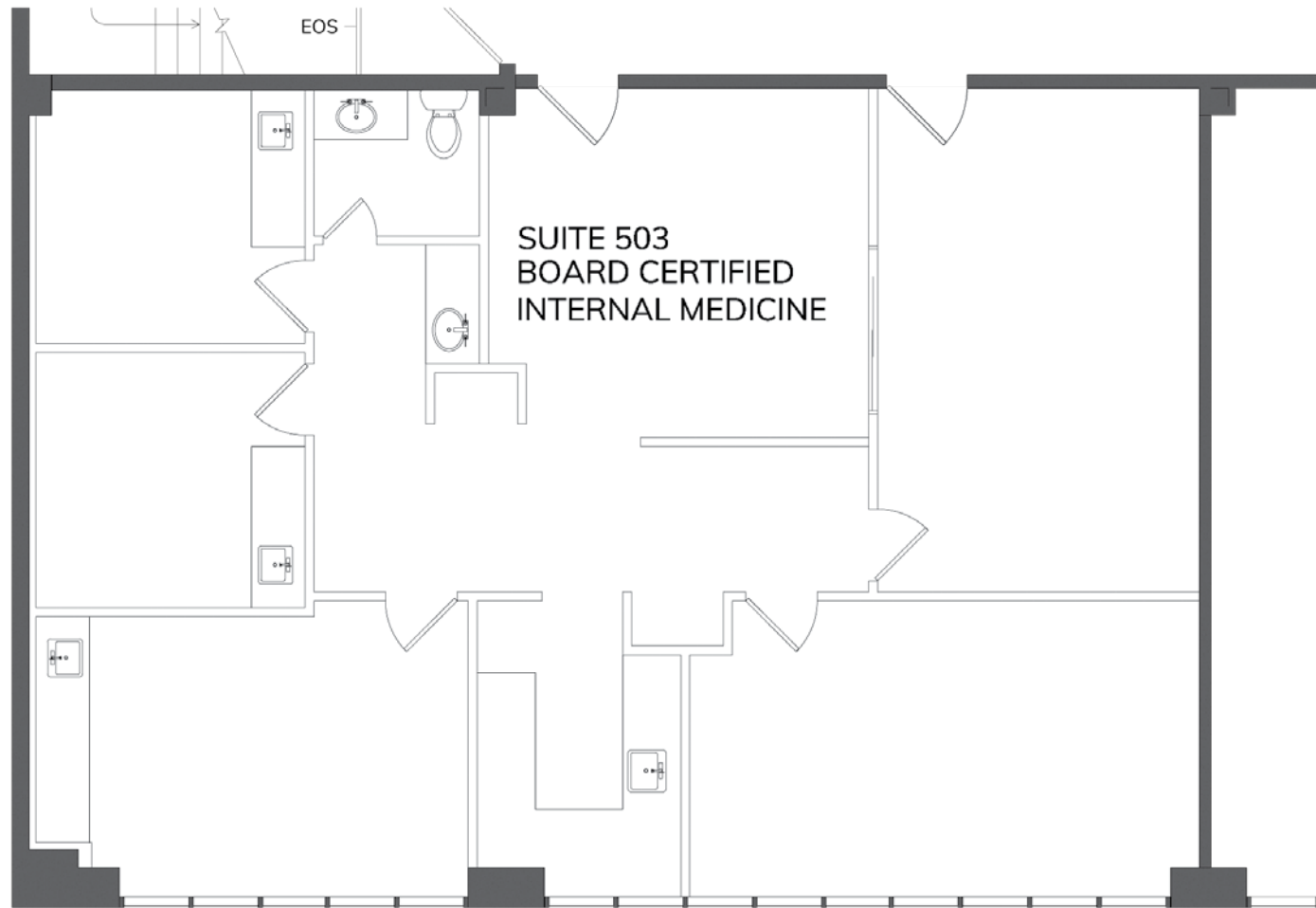
SUITE	SQ. FT.
503	±1,579 RSF



PROPERTY HIGHLIGHTS

- New Ownership
- New Renovations
- On-Site Pharmacy
- Great Window Line
- Great Street Parking (free & Unmetered)
- Covered on-site parking in secured lot

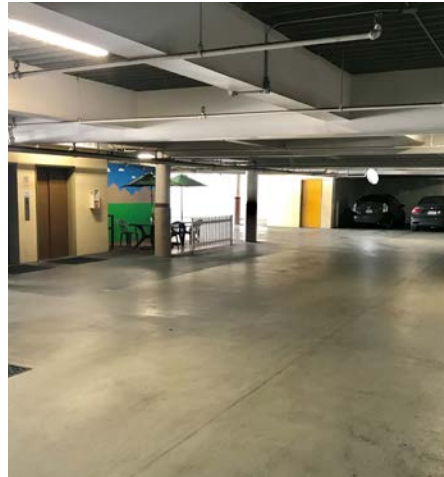
SUITE 503 FLOOR PLAN • ±1,579 RSF



NOT TO SCALE

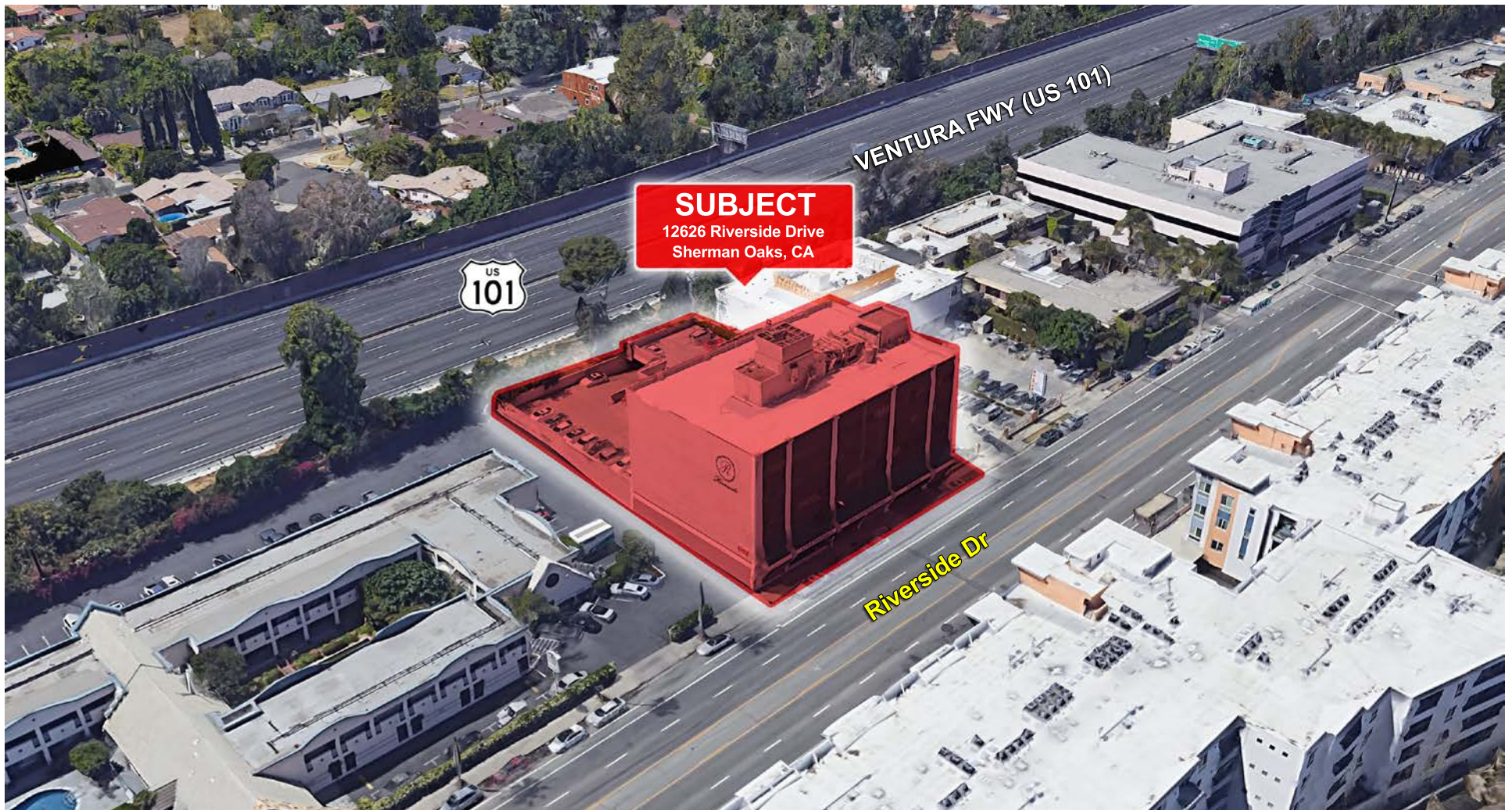
12626 Riverside Dr • Valley Village | CA MEDICAL SPACE AVAILABLE FOR LEASE

PROPERTY PHOTOS



12626 Riverside Dr • Valley Village | CA MEDICAL SPACE AVAILABLE FOR LEASE

AERIAL



12626 Riverside Dr • Valley Village | CA

OFFICE SPACE AVAILABLE FOR LEASE



For more information:

Todd Wuschig

Principal
818.933.0301
twuschig@lee-re.com
DRE# 01320005

Jennifer Donaldson

Principal
818.933.0347
jdonaldson@lee-re.com
DRE# 01317737



Lee & Associates® - LA North/Ventura, Inc.
Corporate ID #01191898
A Member of the Lee & Associates®
Group of Companies
15250 Ventura Blvd., Suite 100
Sherman Oaks, CA 91403
P:818.223.4388 F:818.591.1450