



# OFFICE SPACE FOR RENT

3845 Tenth Street | RIVERSIDE, CA 92502

PARKING  
LOT  
3  
PUBLIC PARKING

# LWCO

LAUNA WILSON CONSULTING

Located in the heart of Downtown Riverside's Arts and Culture District, 3845 Tenth Street offers a walkable, business-forward environment surrounded by creativity and commerce. Just minutes from Main Street and near City Hall, the Convention Center, and the Greater Riverside Chambers of Commerce, this address places your office at the center of civic, cultural, and professional activity.

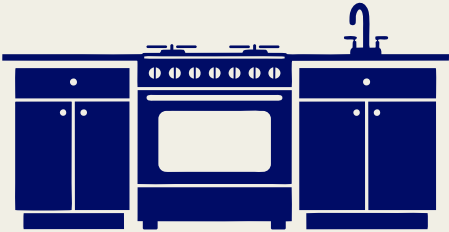


# Features

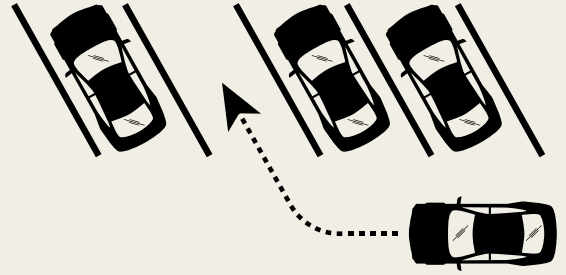
*Conference Room*



*Kitchen*



*On-Site Parking*



*Hi-Speed Internet*



*Common Areas*



*Secure Access*



# Features

- Private second-floor office suite
- Access to shared common areas
- Reservable conference room
- Kitchen / break area
- Secure building access with monitored entry points
- High-speed internet and utilities included
- Quiet, professional work environment
- Flexible layout suitable for professional users
- On-site and nearby parking options
- Walkable Downtown Riverside location
- Located within the Arts and Culture District
- Close proximity to Main Street, City Hall, and the Convention Center
- Freeway access to CA- 91/ CA-60



# Interior Photos- 1<sup>st</sup> Floor



Foyer



Common Space-  
1<sup>st</sup> Floor

# Interior Photos- 1<sup>st</sup> Floor



Kitchen



Conference Room

# Office Suite A - 2<sup>nd</sup> Floor



Entrance

Window

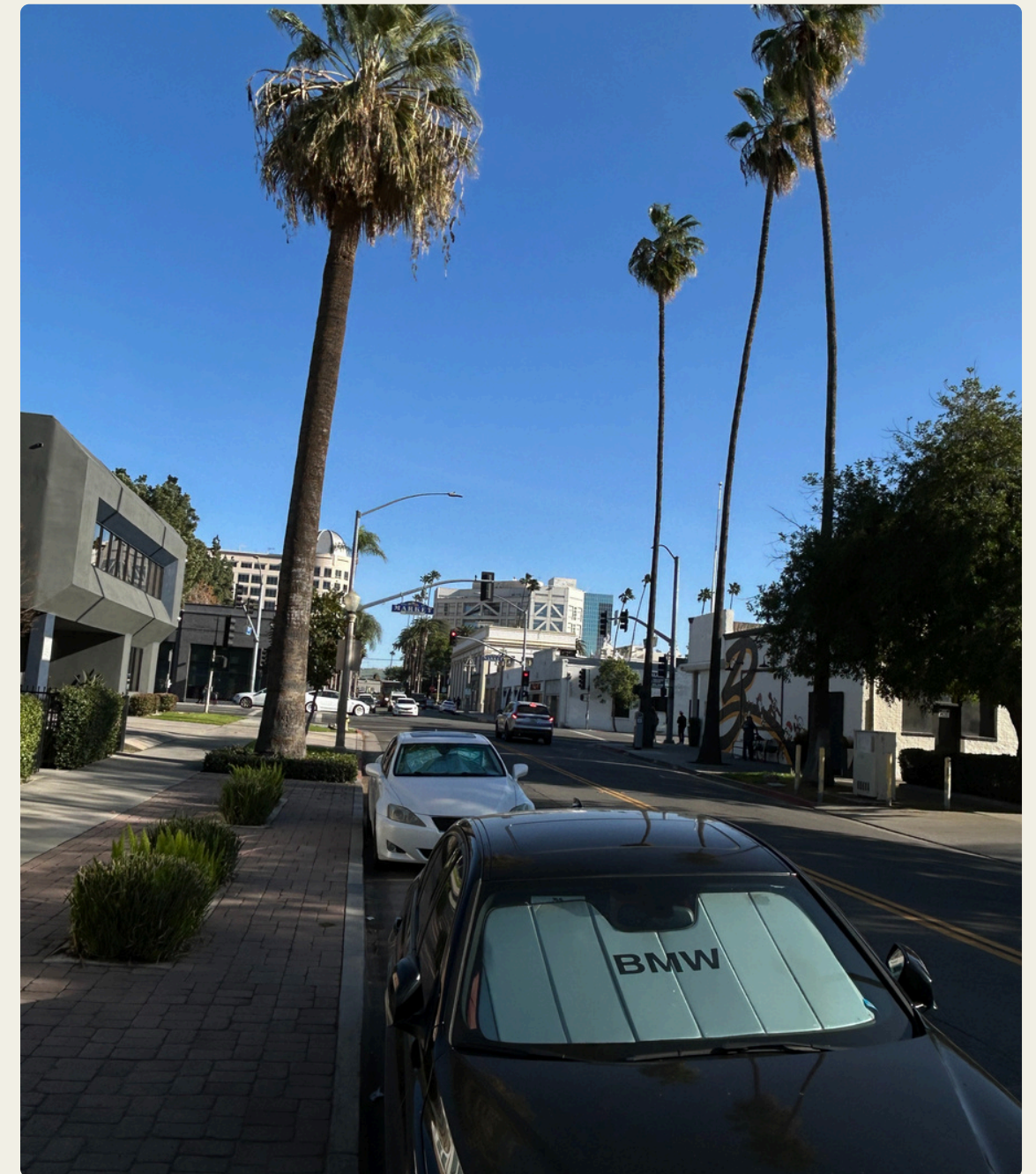
Interior

# Exterior Photos



Private parking located in rear of building.

# Additional Photos



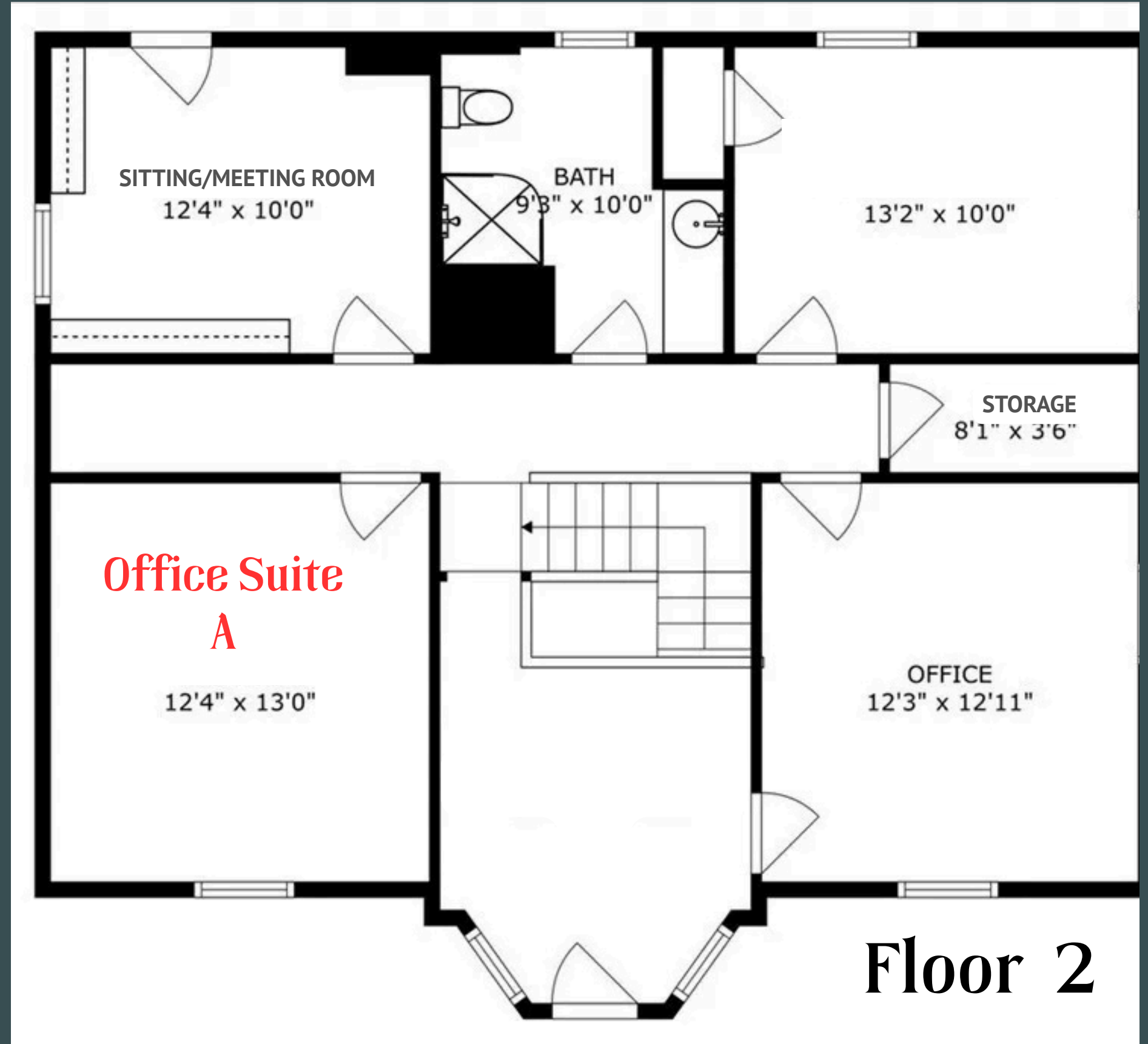
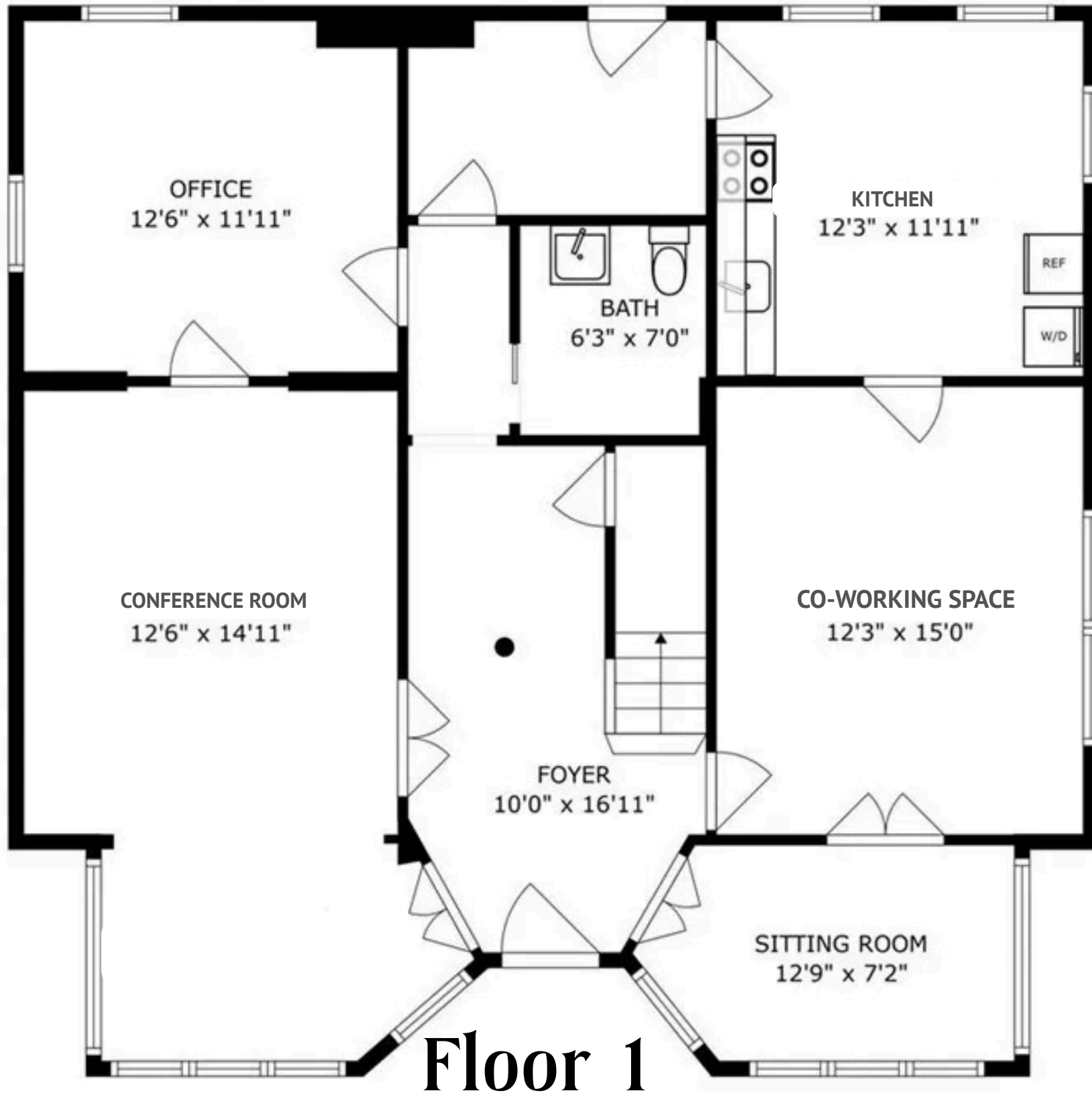
Common Space-  
2<sup>nd</sup> Floor

Exterior- Front

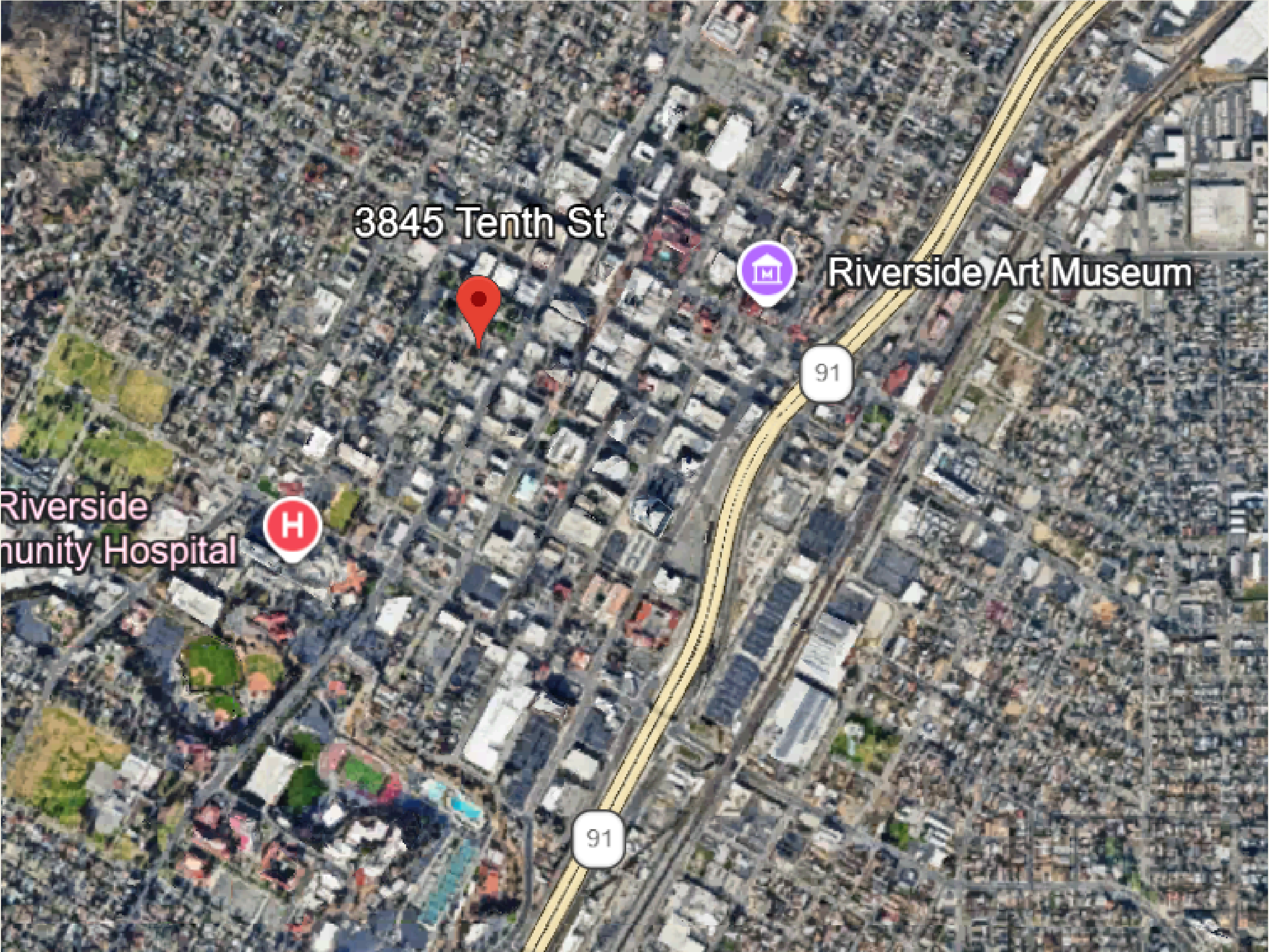
Street View

# Floor Plans

SIZES AND DIMENSIONS ARE APPROXIMATE, ACTUAL MAY VARY.



# Aerial



Any  
*questions?*

Ashley Lopez-  
Padilla

Email

[ashley@launawilson.com](mailto:ashley@launawilson.com)

Call

(626) 975- 2448