

**RIDDLE ASSOCIATES Inc.**  
Commercial Real Estate

# OFFICE / WAREHOUSE SPACE FOR LEASE

500 Freeman Avenue, Suite 105 | Chesapeake, VA



- AVAILABLE 8/01/26
- LEASE RATE: \$12.50/SF NNN at \$2.00/SF
- 1,420 SF
- Zoned M2
- 3-phase power, 14' ceiling height, 10' x 12' grade door, HVAC heat pump and gas.

**EXCLUSIVELY OFFERED BY:**

**LARRY RUMSEY | [lrumsey@riddleassociates.com](mailto:lrumsey@riddleassociates.com) | 757.353.2473**

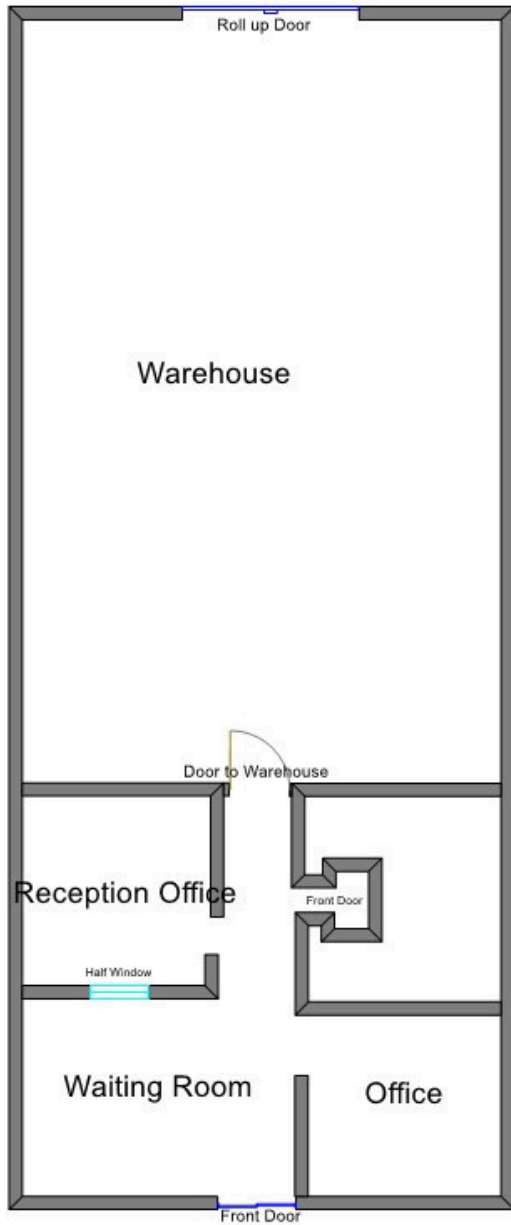
**CALL TODAY FOR PRICING AND TO SCHEDULE YOUR PRIVATE TOUR!**

**RIDDLE ASSOCIATES, INC.**  
Commercial Real Estate

**“Real Estate Services Tailored to Your Needs”**

The information presented in this marketing flyer is obtained from sources believed to be reliable, but is not warranted. This offer is subject to prior sale or lease, errors, omissions or withdrawal without notice.

530 Woodlake Circle • Suite 100 • Chesapeake, VA 23320 • [www.riddleassociates.com](http://www.riddleassociates.com)



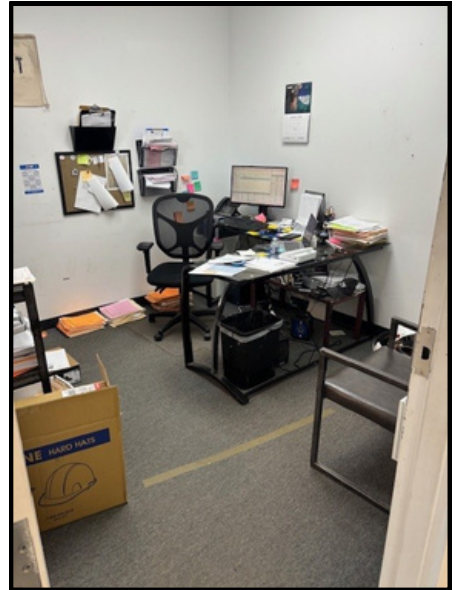
# RIDDLE ASSOCIATES, INC.

Commercial Real Estate

“Real Estate Services Tailored to Your Needs”

*The information presented in this marketing flyer is obtained from sources believed to be reliable, but is not warranted. This offer is subject to prior sale or lease, errors, omissions or withdrawal without notice.*

530 Woodlake Circle • Suite 100 • Chesapeake, VA 23320 • [www.riddleassociates.com](http://www.riddleassociates.com)



# RIDDLE ASSOCIATES, INC.

Commercial Real Estate

“Real Estate Services Tailored to Your Needs”

*The information presented in this marketing flyer is obtained from sources believed to be reliable, but is not warranted. This offer is subject to prior sale or lease, errors, omissions or withdrawal without notice.*

530 Woodlake Circle • Suite 100 • Chesapeake, VA 23320 • [www.riddleassociates.com](http://www.riddleassociates.com)



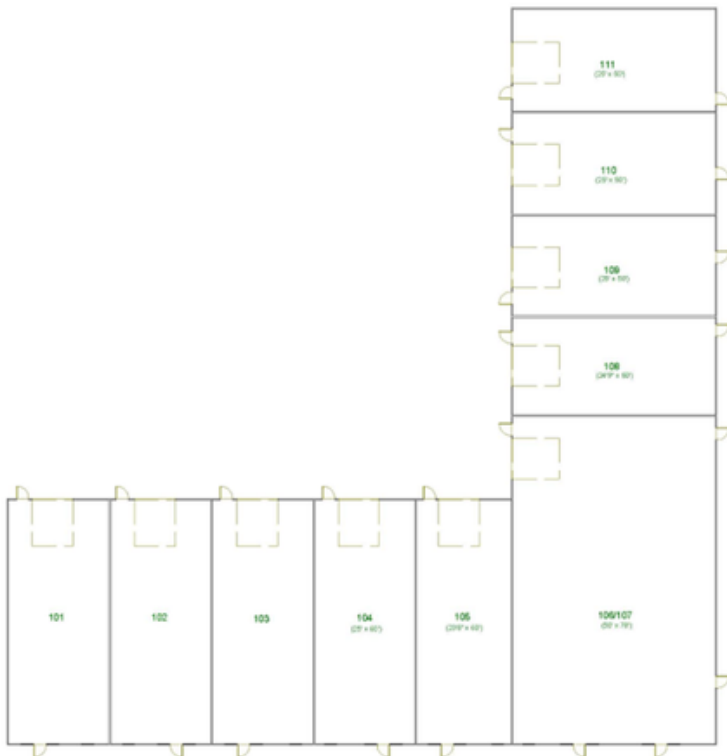
# RIDDLE ASSOCIATES, INC.

Commercial Real Estate

“Real Estate Services Tailored to Your Needs”

*The information presented in this marketing flyer is obtained from sources believed to be reliable, but is not warranted. This offer is subject to prior sale or lease, errors, omissions or withdrawal without notice.*

530 Woodlake Circle • Suite 100 • Chesapeake, VA 23320 • [www.riddleassociates.com](http://www.riddleassociates.com)



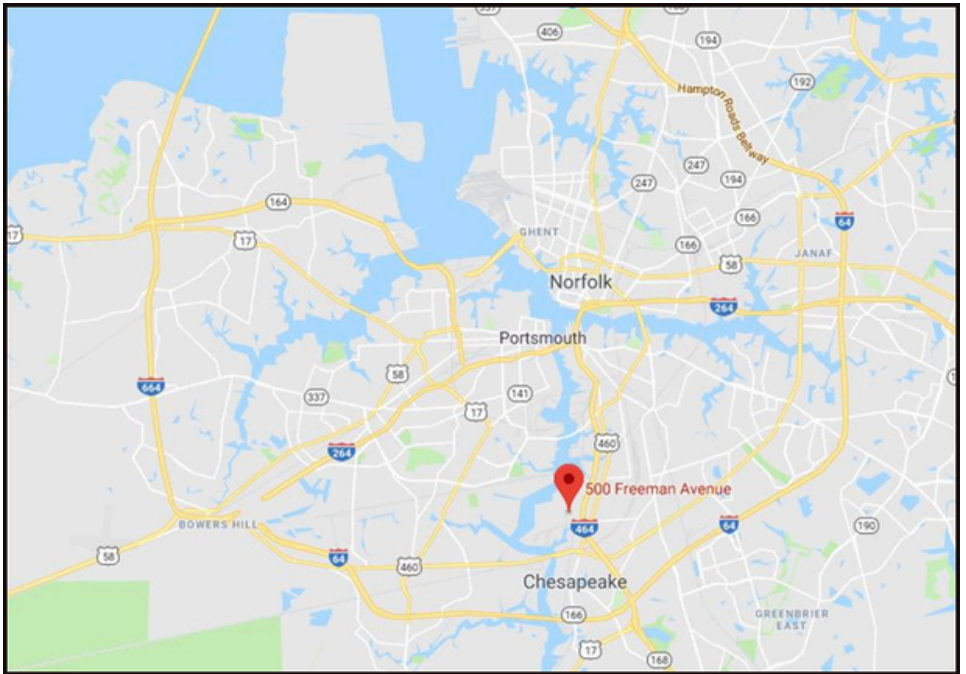
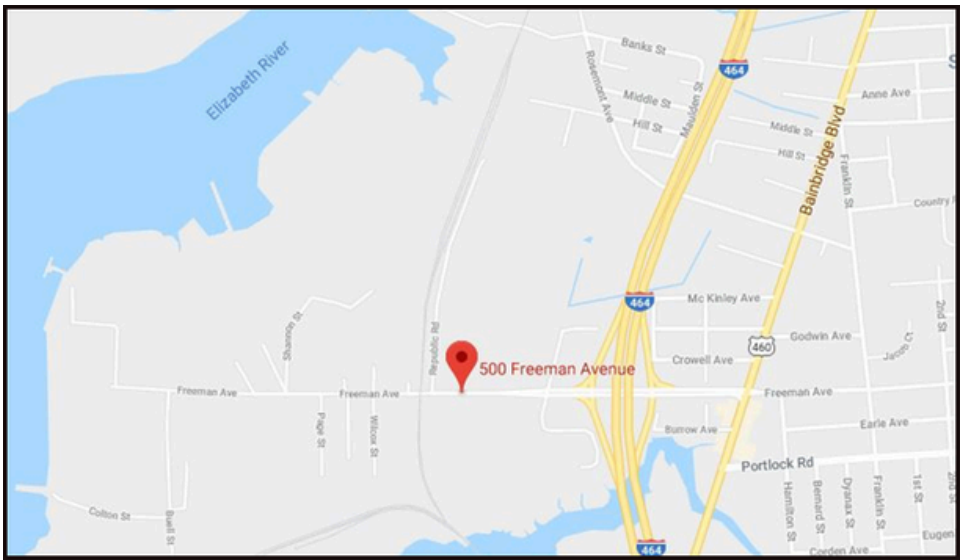
# RIDDLE ASSOCIATES, INC.

Commercial Real Estate

“Real Estate Services Tailored to Your Needs”

*The information presented in this marketing flyer is obtained from sources believed to be reliable, but is not warranted. This offer is subject to prior sale or lease, errors, omissions or withdrawal without notice.*

530 Woodlake Circle • Suite 100 • Chesapeake, VA 23320 • [www.riddleassociates.com](http://www.riddleassociates.com)



# RIDDLE ASSOCIATES, INC.

Commercial Real Estate

“Real Estate Services Tailored to Your Needs”

*The information presented in this marketing flyer is obtained from sources believed to be reliable, but is not warranted. This offer is subject to prior sale or lease, errors, omissions or withdrawal without notice.*

530 Woodlake Circle • Suite 100 • Chesapeake, VA 23320 • [www.riddleassociates.com](http://www.riddleassociates.com)