

RedStone

4041 MacArthur Blvd., 4th Floor, Newport Beach, CA 92660



PRIVATE OFFICES

Highly professional private offices for individuals and teams that are flexible and scaled for growth.

MEETING ROOMS

Spacious, well-appointed meeting rooms with on-site administrative support. Available for an hour, day or longer.

VIRTUAL OFFICES

Establish a business presence with mail handling, phone answering or meeting room time.

ABOUT THIS LOCATION

The workspace features modern private offices, fully equipped conference rooms, and spacious, light-filled lounges ideal for collaboration. Whether you need a private office suite, coworking space, or flexible workspace solution, this Newport Beach office location adapts to your business needs.

CONTACT US

Let's touch base! Contact the on-site General Manager at 949-260-9000 or REDmanager@premierworkspaces.com to schedule a tour.



PREMIER AMENITIES

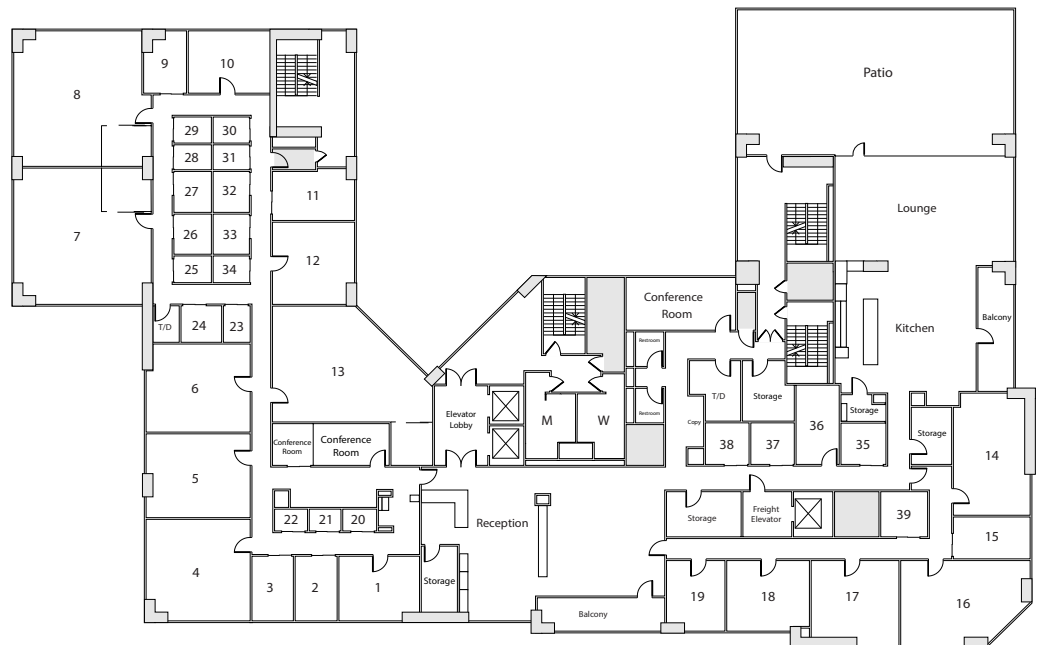
Our private suites can be easily customized to fit your desired aesthetic and brand.

- Private Offices
- Team Rooms
- High Speed Internet
- Telephone Answering
- Mail Collection
- Equipped Kitchen
- Day Offices
- Meeting Rooms
- Daily Janitorial
- Furnished or Unfurnished

PREMIER DIFFERENCE

We've been perfecting the professional workspace for over 23 years.

- Highly-Professional Atmosphere
- On-Site Manager & Support Staff
- Scalable Solutions for Individuals and Teams
- On-Site Billing
- 90+ Locations Nationwide



NEARBY AMENITIES

Located in the heart of the Redstone business campus, our Newport Beach flexible office space offers a bright, professional environment designed to support growing businesses and established teams alike.

On-Site Amenities:

- Private Patio with Wifi
- EV Charging Stations
- Ample Surface Parking
- Lobby Level Tenant Lounge
- Outdoor seating and landscaped gathering areas
- On-Site Security
- The Lost Bean Organic Coffee & Tea

Nearby Amenities:

- Fashion Island (Restaurants, Shops, and Theaters)
- Hoag Memorial Hospital
- Newport Beach Civic Center
- Newport Beach Country Club
- South Coast Plaza
- Upper Newport Bay Nature Reserve
- Whole Foods

CONTACT US

Let's touch base! Contact the on-site General Manager at 949-260-9000 or REDmanager@premierworkspaces.com to schedule a tour.