



Strata House

An impressive high class
office building overlooking
Heathrow Airport. Perfect for
bringing your team together
in one office space.





Bright, refurbished, flexible office space.

Impeccably renovated to meet the highest standards, our office space offers comfort and fosters a culture of collaboration.



VRF Air Conditioning



Building Manager



36x On-site Private Parking Spaces



Suspended Ceilings With LED Lighting



Full Access Raised Flooring



CCTV & Pass-Controlled Entry System



8 Person Passenger Lift



Comms Room On 2nd Floor



Male, Female & Disabled W/C's



Shower on Ground Floor



Kitchen Facilities

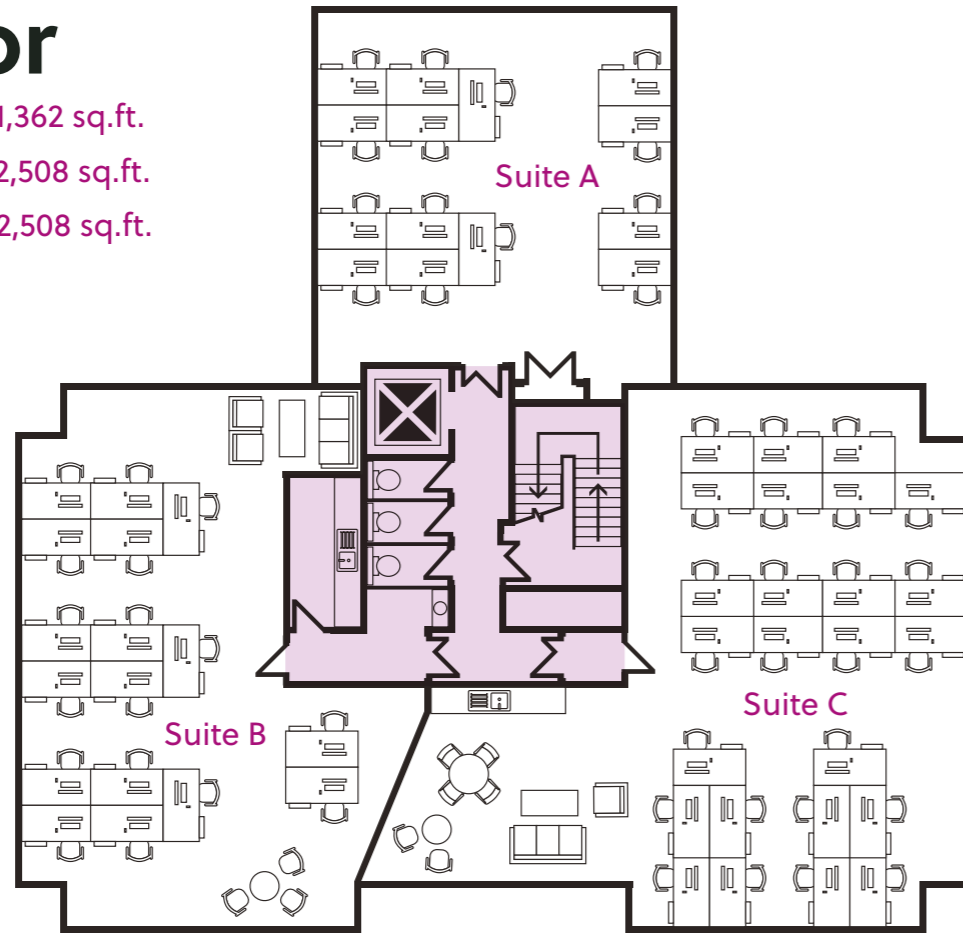


Convenient Transport Links



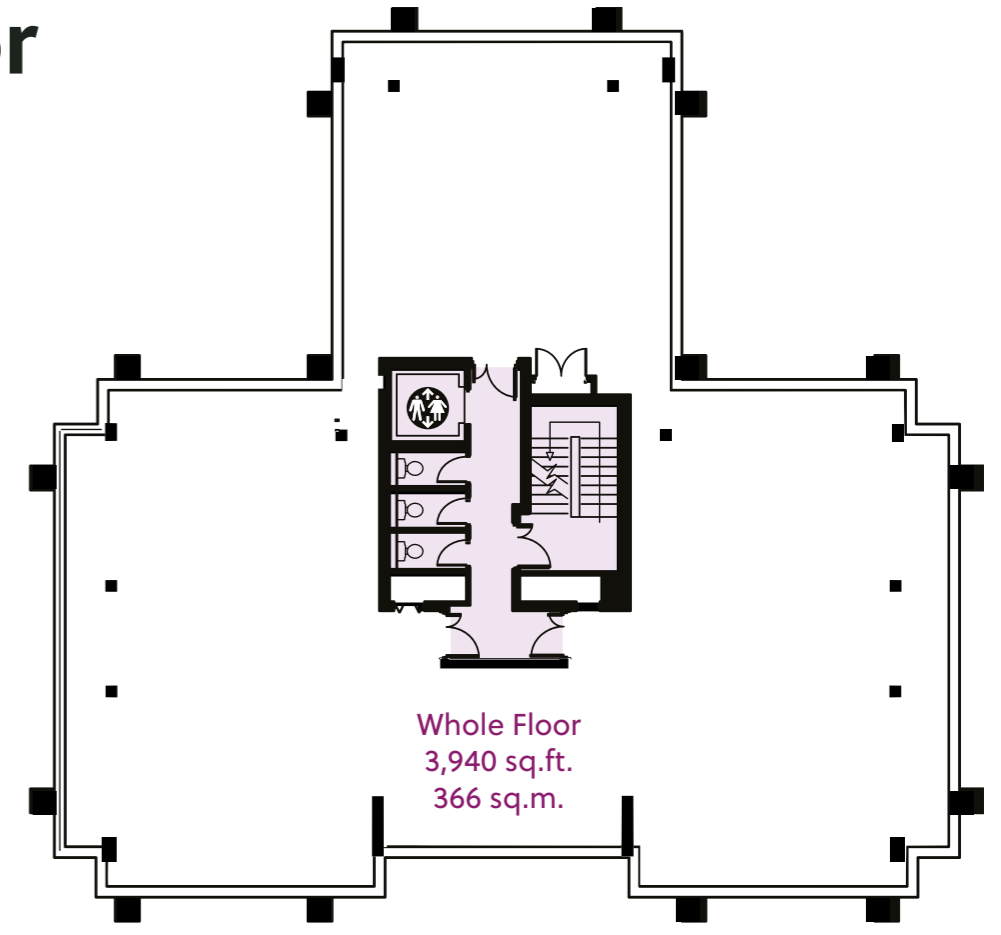
First Floor

Proposed Plan Suite A | 1,362 sq.ft.
Proposed Plan Suite B | 2,508 sq.ft.
Proposed Plan Suite C | 2,508 sq.ft.



Third Floor

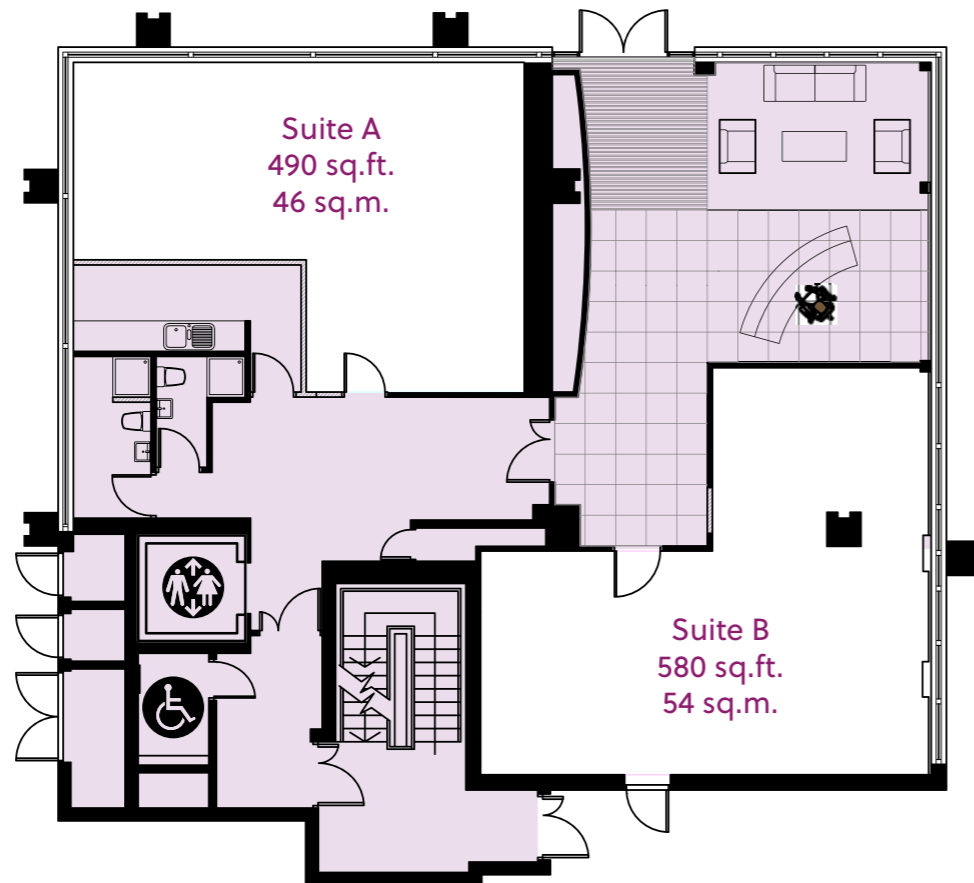
Whole Floor | 3,940 sq.ft.



Whole Floor
3,940 sq.ft.
366 sq.m.

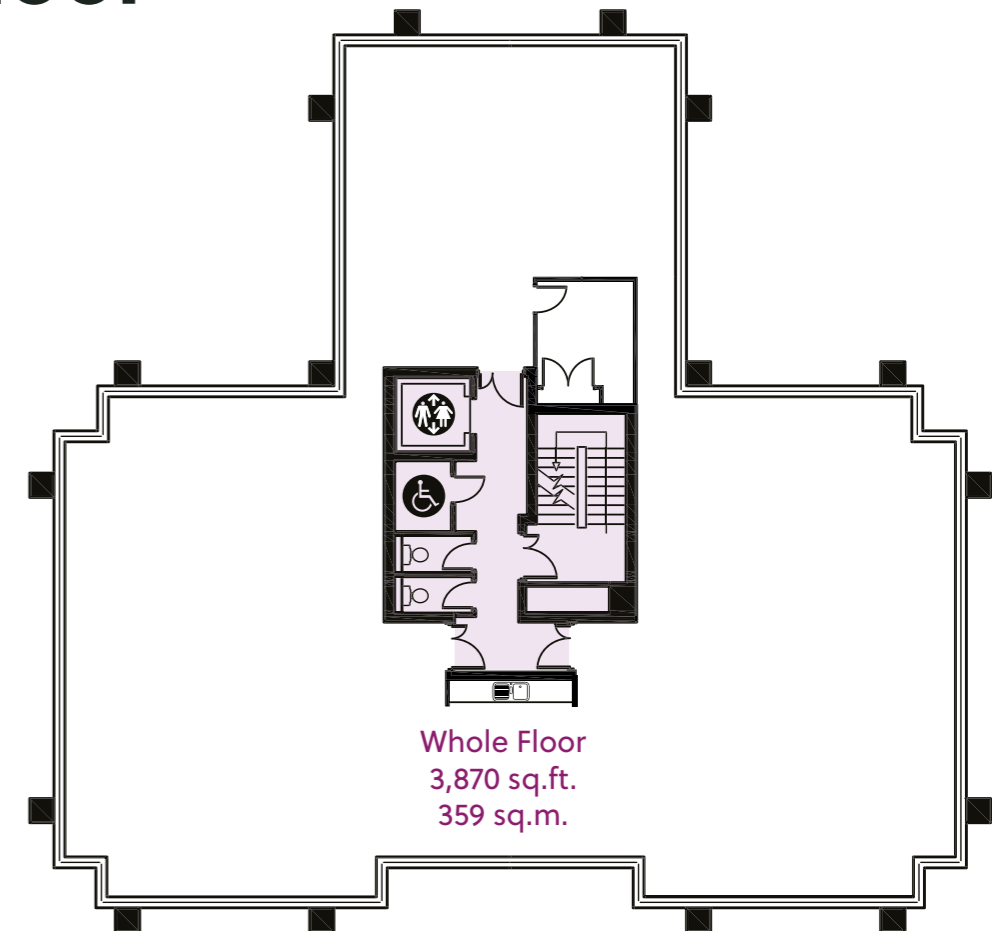
Ground Floor

Suite A | 490 sq.ft.
Suite B | 580 sq.ft.



Second Floor

Whole Floor | 3,870 sq.ft.

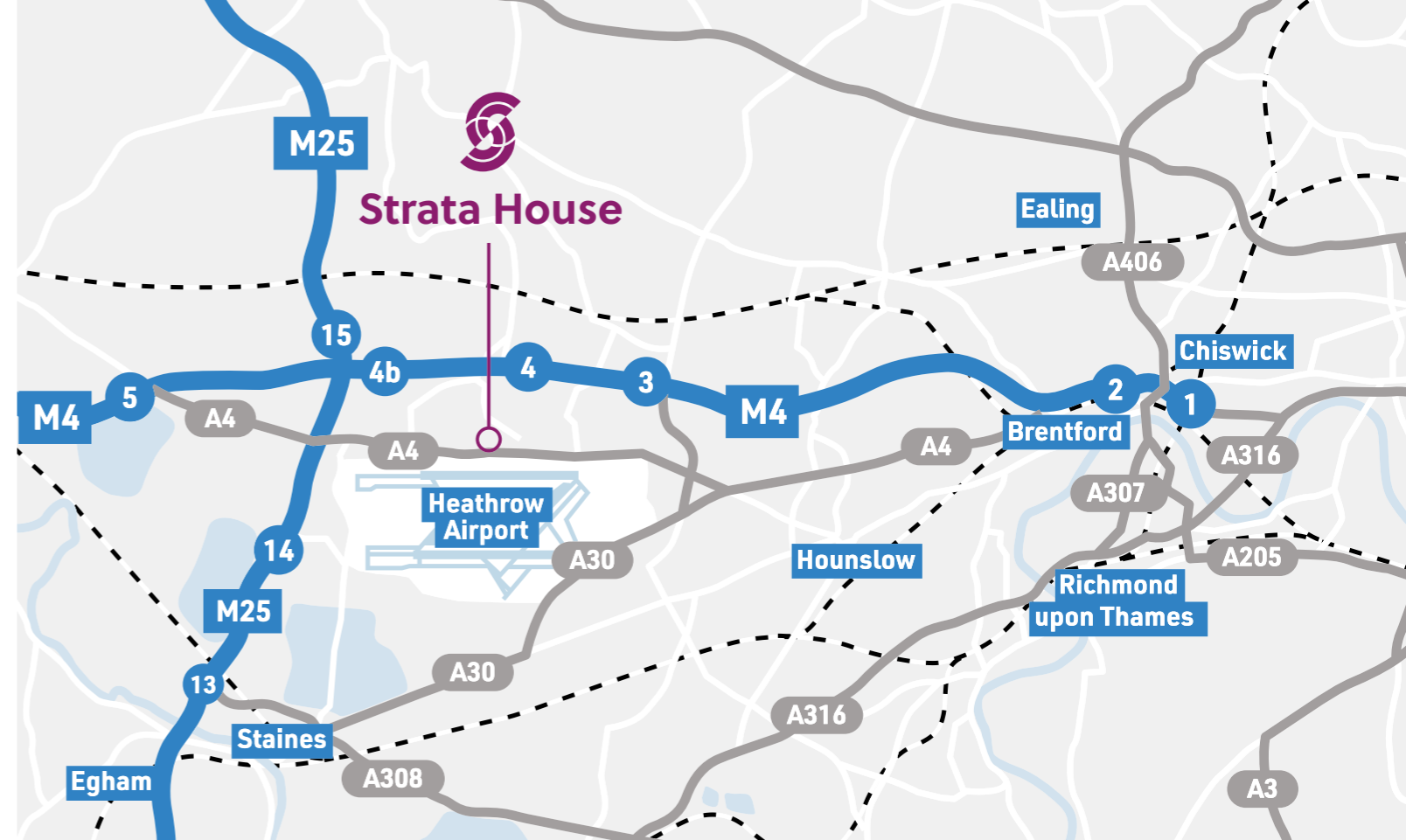


Whole Floor
3,870 sq.ft.
359 sq.m.

Relocate to the heart of Heathrow

This is a well-established office location with a bus stop immediately outside that provides a bus service to Heathrow Airport.

From there the Piccadilly line, Elizabeth line, and Heathrow Express provide easy access to Central London. Local bus routes provide direct services to Hounslow, Slough and Uxbridge.



Travel by Car

Terminals 2 & 3 ✈️	1.2 miles	5 mins
M4 (Junction 4)	1.4 miles	6 mins
Terminal 5 ✈️	2.7 miles	9 mins
M25 (Junction 14)	3.4 miles	8 mins
Staines	7.7 miles	18 mins
Central London	15 miles	30 mins

T5 Underground Heathrow *Peak time 12 trains per hour*

Green Park (Piccadilly Line)	52 mins
Tottenham Court Road (Elizabeth Line)	28 mins

Travel by Train

Paddington Station	15 miles
--------------------	----------

Walking

Sovereign Court Shops	2 mins
Steak & Lobster / Radisson Blu	7 mins
Carluccio's / The Marriott	10 mins

Travel by Bus

Local Busses: 105 / 140 / 111 / 423 / 285 / 555





Heathrow Airport



Strata House

RENAISSANCE HOTEL

SOVEREIGN COURT

HOTEL IBIS STYLES

Local Occupiers



In Good Company

EAT

Westcombe Restaurant <i>Within Ibis</i>	1 min walk
Convenience Shop, Sovereign Food & Wine	2 min walk
Three Magpies	3 min walk
Skyway Brasserie	7 min walk
Carluccio's	10 min walk
The Pheasant Inn	13 min walk

RELAX

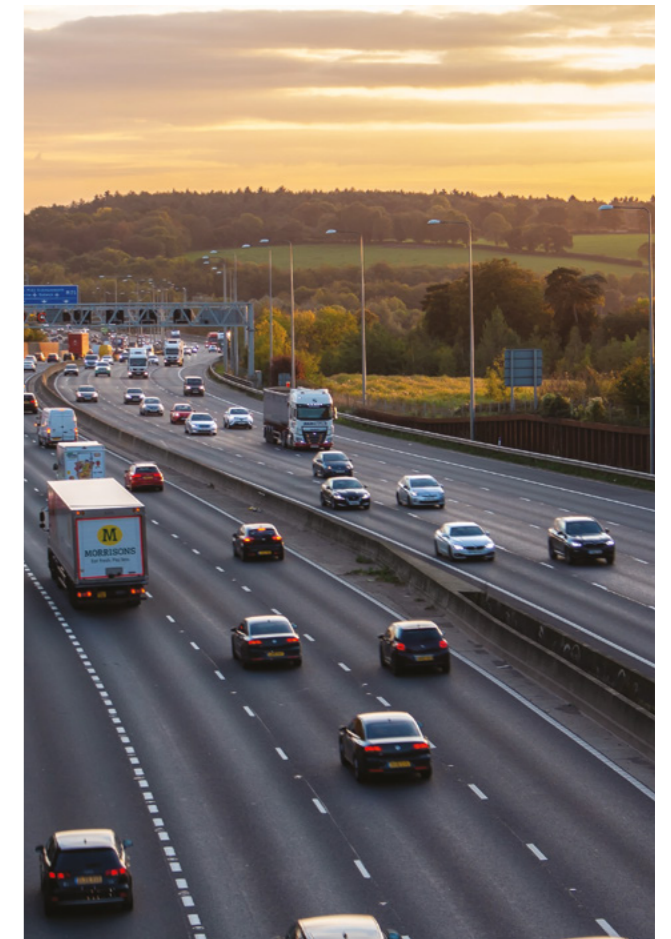
Sipson Recreation Ground	9 min walk
--------------------------	------------

EXERCISE

David Lloyd, Heston	10 min drive
Botwell Green Sports & Leisure Centre	15 min drive
Pure Gym, Hayes or Staines	18 min drive

SLEEP

Hotel Ibis Styles	1 min walk
Renaissance London Heathrow	6 min walk
Radisson Blu	7 min walk
London Heathrow Marriott	10 min walk
Sheraton Skyline Hotel	10 min walk





Strata House

264-270 Bath Road, Heathrow UB3 5JJ

Orbit
Southern

020 8750 1410
www.orbitsouthern.co.uk

DISCLAIMER: These Particulars are believed to be correct at time of going to Press, but the Developer reserves the right to change the scheme in the future. However, the Vendors/Lessors and Agents of this property give notice that: (1) These Particulars are intended as a general outline only, for the guidance of prospective purchasers or tenants, and do not constitute the whole or any part of an offer or contract. (2) They cannot guarantee the accuracy of any description, dimension or other details contained in these Particulars and prospective purchasers or tenants should not rely on them as statements of fact or representation, but must satisfy themselves as to the accuracy of such details. (3) No employee of the Agents has any authority to make or give any representation or warranty, or enter into any contract whatsoever in relation to the property. 0625