

501 BROADWAY | SM, CA

DOWNTOWN, ENLIVENED.

501 BROADWAY



TISHMAN SPEYER
Where Matters

CBRE

| | | | | |
|---------------|-----------------------------|-------------------|-------------|------------------|
| Apple | HOLLISTER | ZARA | CHASE | JR DONNELLY |
| H&M | TILLYS | VICTORIA'S SECRET | VANS | STARBUCKS COFFEE |
| lululemon | athletica | BELLA + CANVAS | Foot Locker | |
| alo | CHASE | SEPHORA | amc | ufo |
| ANTHROPOLOGIE | McConnell's FINE ICE CREAMS | SKECHERS | | |

| | |
|--------------|----------------------------|
| tendergreens | HILLSTONE RESTAURANT GROUP |
| burgerlounge | CYCLEBAR |
| Yogurtland | |

| |
|-------------------------|
| Mendocino Farms |
| Silence COGNAC & COFFEE |

WELLS FARGO

Santa Monica Place Mall

Third Street Promenade

501 BROADWAY

New Residential/Retail Projects (completed)

Future Residential/Retail Developments

Future Residential/Retail Developments

FUTURE VONS SUPERMARKET

Future Residential/Retail Developments

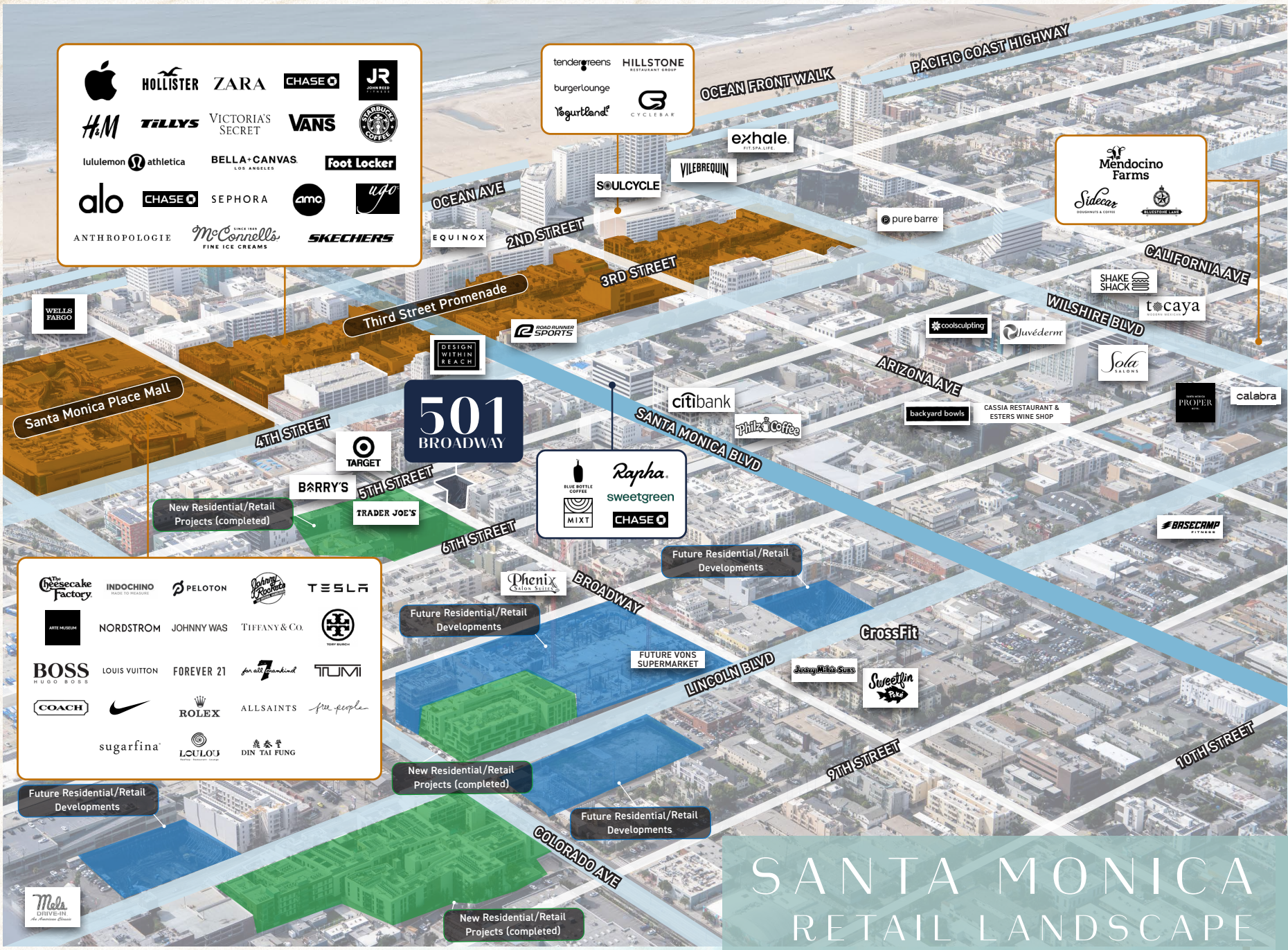
New Residential/Retail Projects (completed)

Future Residential/Retail Developments

New Residential/Retail Projects (completed)

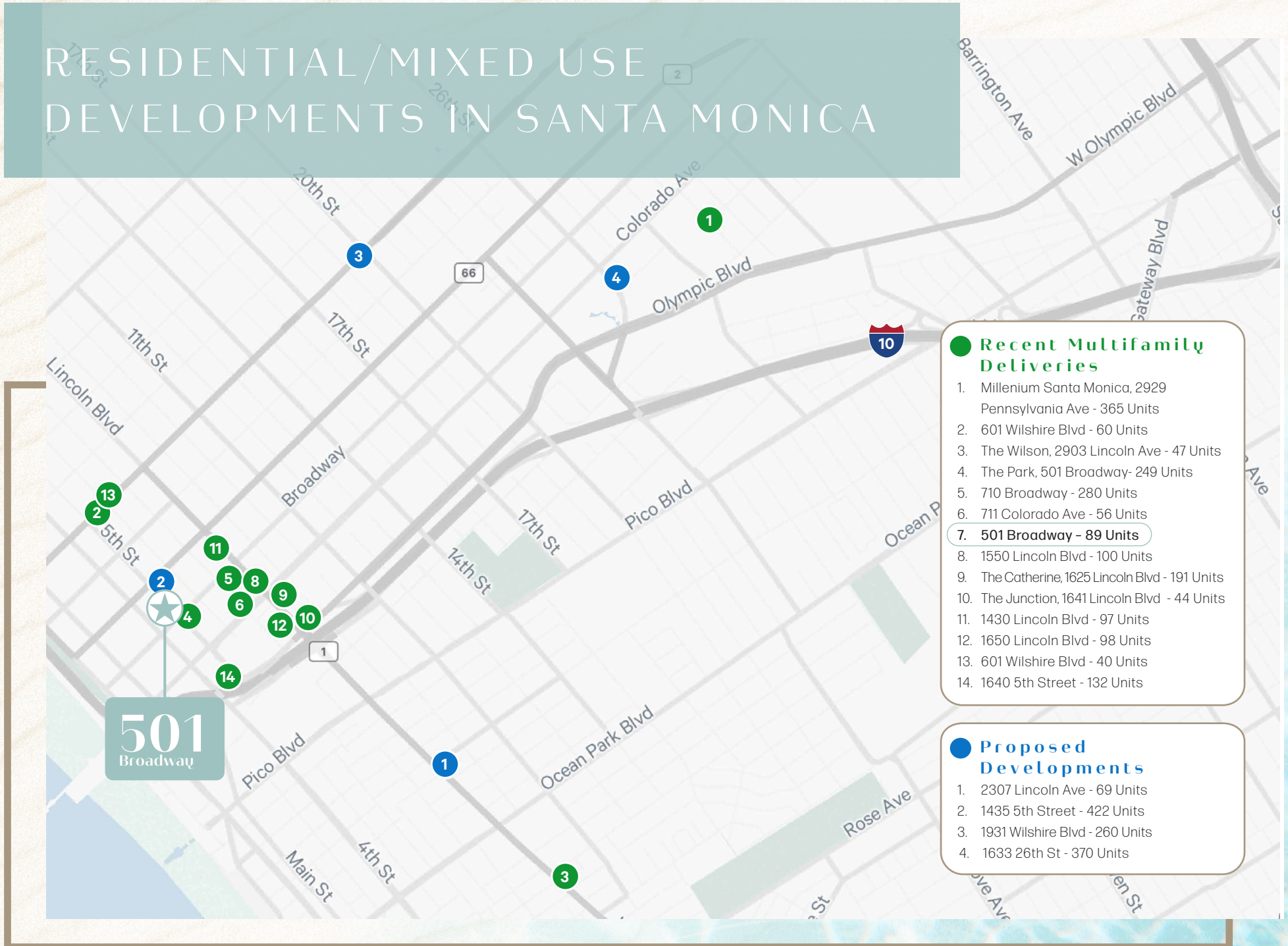
| | | | | |
|-------------------|---------------|--------------|-----------------|---------------|
| Chesecake Factory | INDOCHINO | PELOTON | Johnny Rockets | TESLA |
| ARTS MUSEUM | NORDSTROM | JOHNNY WAS | TIFFANY & CO. | TIFFANY & CO. |
| BOSS HUGO BOSS | LOUIS VUITTON | FOREVER 21 | for all mankind | TUMI |
| COACH | NIKE | ROLEX | ALLSAINTS | free people |
| sugarfina | LOU LOJ | DIN TAI FUNG | | |

| | |
|--------------------|------------|
| Blue Bottle Coffee | Rapha |
| MIXT | sweetgreen |
| CHASE | |



SANTA MONICA RETAIL LANDSCAPE

RESIDENTIAL/MIXED USE DEVELOPMENTS IN SANTA MONICA



THE PROJECT



501 Broadway is located in the heart of Santa Monica at the intersection of 5th and **Broadway** and within walking distance of the Third Street Promenade. Construction is underway for this **89-unit** state of the art mixed use residential building with retail on the ground floor.

THE SPACE



Delivery Date:
February 2026



Patio:
700 SF



Size:
2,950 SF



Frontage:
44' on 5th St. &
51' on Broadway



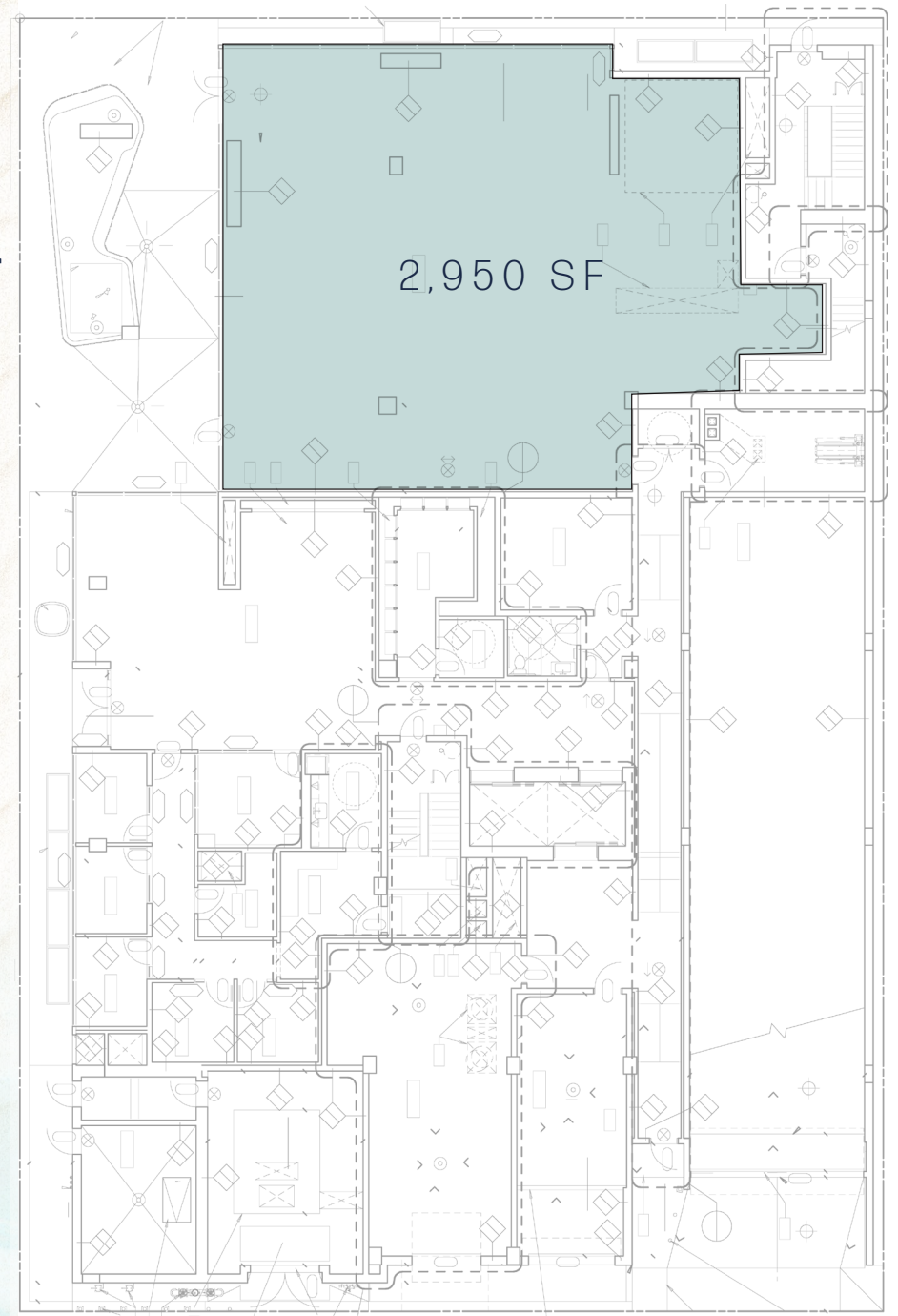
Venting/Grease: Shaft In Place for Venting. Grease Line In Place.

Centrally located with immediate access to 10 Freeway and PCH and dozens of dining, entertainment and retail options.

Strong neighboring brands including Target, CVS, WeWork, Benihana, Trader Joes and more!

5th Street

Broadway



THE NEIGHBORHOOD



COMMUNITY DEMOGRAPHICS



**EXCELLENT
TRANSIT**

(77)



**WALKER'S
PARADISE**

(94)



**VERY
BIKEABLE**



\$164,403

Average HH Income
within 1 mile



RESIDENTIAL

1,062

units under construction
within 1 mile



OFFICE

42,000

square feet of office/medical
space within 1 mile



67,221

daytime workers
within 1 mile

501 BROADWAY

SANTA MONICA, CA

FOR LEASING INQUIRIES:

Ryan Gurman

SENIOR VICE PRESIDENT

Lic. 01972081

+1 310 650 7545

ryan.gurman@cbre.com

Bronson Morgan

SENIOR ASSOCIATE

Lic. 02194401

+1 415 446 8796

bronson.morgan@cbre.com

Alex Sagues

SENIOR VICE PRESIDENT

Lic. 02055525

+1 415 772 0306

alex.sagues@cbre.com



TISHMAN SPEYER
Where Matters

CBRE



© 2025 CBRE, Inc. All rights reserved. This information has been obtained from sources believed reliable, but has not been verified for accuracy or completeness. You should conduct a careful, independent investigation of the property and verify all information. Any reliance on this information is solely at your own risk. CBRE and the CBRE logo are service marks of CBRE, Inc. All other marks displayed on this document are the property of their respective owners, and the use of such logos does not imply any affiliation with or endorsement of CBRE. Photos herein are the property of their respective owners. Use of these images without the express written consent of the owner is prohibited.