

beyond Fox Court

workspace
for changemakers



beyond is the bold new future

We create flexible local workspaces to empower global human endeavour. We are here to serve a generation of extraordinary change-makers and forward thinking business innovators. In fact, people and businesses like you. Whose world has changed forever.

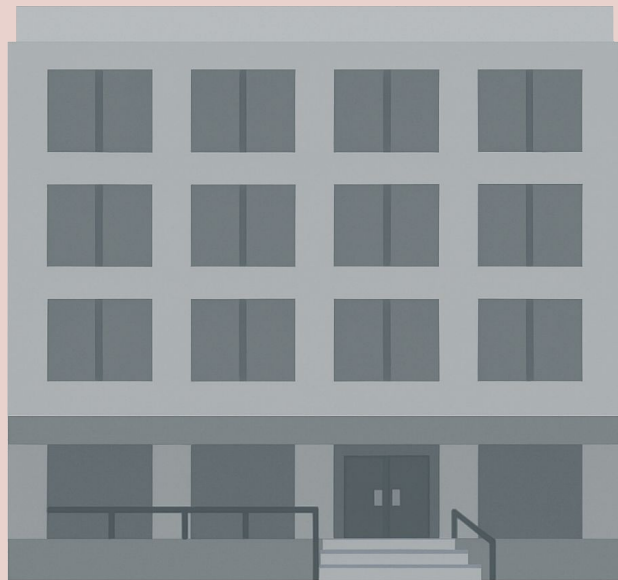
As our name suggests, we think way **beyond** work space. We are unlocking a bold new future with a finely tuned formula.

We are about local community, global connection and high spec technology. We offer world class space and customised curated services. It's our manifesto that places you at the heart of your neighbourhood with a mind blowing array of opportunity.

Sounds like your kind of future? Let's get to work.

World class workspace in heart of London

**Fox
Court**



beyond Fox Court is a bold, modern workspace in the heart of London – designed for teams that thrive on energy, connection, and flexibility.

Spread across nine vibrant floors, this expansive location features more than 1,700 workstations, including private offices, fully equipped meeting rooms, and a variety of collaborative communal spaces. A standout feature is the outdoor courtyard – a rare find in central London – offering space to unwind, connect, or catch a breath of fresh air between meetings.

Located at 14 Gray's Inn Road, **beyond Fox Court** sits at the intersection of culture and commerce, on the top of Chancery Lane and walking distance from Farringdon and Holborn stations. Surrounded by a lively mix of cafés, restaurants, pubs, and shops, the location offers teams everything they need – both inside and out – to do their best work.

Designed for the way modern teams work, **beyond Fox Court** blends flexibility, style, and community into one seamless workspace experience.

The perfect balance of location, style and service

beyond Fox Court's central London location means there's a huge amount to do and see within a stone's throw of the workspace. What's more, it also provides easy access to the capital's vibrant hubs – the West End, the Square Mile, Chinatown, Covent Garden, Bloomsbury or King's Cross St Pancras are all easily accessible.

Set within this amazing location, the workspace itself brings together contemporary style with excellent facilities. As well as private offices, modern coworking spaces, and collaborative breakout areas and meeting rooms, there are also bright lounge areas and an outdoor courtyard to ensure members have everything they need to thrive.

Our world class **beyond app** creates further connections across our global membership and building communities, while our on-site community managers provide exceptional support.





Find Inspiration at **beyond** Fox Court

A step **beyond**.

Our unique formula goes way beyond workspace convention. A human centric approach converges high spec technology, curated services and global connectivity for businesses across the world.



A global mindset for local opportunity

beyond is an energy hub for innovation, collaboration & connection. Our cutting edge technology means we are able to bring together the local ecosystem and all types of companies across the world. Through rapid digital content and communication, we're transforming future opportunity for businesses across the world.



World class technology that drives innovation

Our unrivalled app technology opens a world of opportunity for our members. From easy meeting room bookings to discounted product purchases and the chance to connect directly with **beyond** members or even a wider business community. Our technology is transforming the future of flexible workspace.



beyond workspace for performance & positivity

Light-filled spaces that ignite imagination. Bold colour palettes that spark a creative mindset. Open, relaxing lounge spaces to support team collaboration or quiet contemplation.

beyond workspace is designed to enhance human performance and connectivity.

Why is Holborn so special?

It's a hub where London's history meets modernity, blending legal tradition, literary heritage and dynamic business energy. It's a thriving base for progressive companies and ambitious professionals.

Right in the heart of the capital, the area around Holborn, Chancery Lane and Farringdon is a hotspot for business and innovation. You will find everything from global law firms to leading creative agencies, fast-growing tech startups and established management consultancies.

It's a lively, characterful neighbourhood. The charm of nearby Leather Lane market, the independent coffee shops and boutiques of Lamb's Conduit Street, and the quiet elegance of Gray's Inn Gardens create a unique and inspiring backdrop.

The area is exceptionally well connected, with Holborn, Chancery Lane and Farringdon stations just a short walk away for fast links across London and beyond. The Eurostar is 10 minutes away, and City or Heathrow airports are reachable in 40 minutes.



Memberships at beyond Fox Court



Coworking

Your daily or monthly subscription in a shared space, all on flexible terms. Mon-Fri access



Desk

Your own dedicated desk in a shared space, all on flexible terms. 24/7 access



Office

Private office space customised to fit your company, all on flexible terms. 24/7 access



Meeting

Fully equipped, modern and designer meeting rooms. Impressive event space for larger groups. 24/7 access



Benefits at beyond Fox Court



Fully flexible terms



Coffee and Tea facilities



Mixed working spaces from open lounge to areas for quiet contemplation



Global Access



Printing area



beyond mobile app



Member guests are welcome for meeting room bookings



Outdoor courtyard



IT support



All inclusive pricing



Events programme



Ultra-fast WiFi



Phone booths



Exclusive members perks

Ready to become our broker?

Now more than ever before, companies are relying on your knowledge and expertise when it comes **to choosing the right workspace strategy**. We work with you to find new inspiring and collaborative workspace solutions for your clients, creating a **positive impact in communities across local neighborhoods**. Whether your customers are looking for a new HQ, managed office or their own hub & spoke model, **our flexible space solutions can help you** meet their changing business requirements.

We are committed to fully pay our agents in a speedy and efficient manner - regardless of the transaction type.

Our commision:

Contact us for the latest promotions and commission payments.



Tech that connects a community

beyond embraces technology that transforms workspace member experiences and benefits entire buildings.

Our custom made **beyond app** creates a universe of opportunity for all. A rapid click puts members in touch with each other and even connects business communities within entire buildings. A smart swipe opens **members benefits** from discounted business services to expert suppliers.

A library of content and connections gives our users opportunities **to elevate knowledge, enhance their expertise and thrive.** In one easy step, members can book desks or rooms to brainstorm.



Fancy an office in the heart of London?

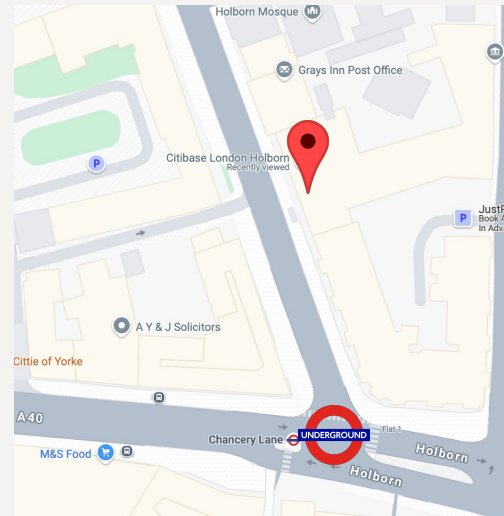


Let's Talk

Joshua Moulder

+44 (0) 20 8050 7269

foxcourt.enquiries@wearebeyond.work



[View live map](#)

Visit us

Fox Court, 14 Grays Inn Rd, London WC1X 8HN

[Book a tour](#)

<https://www.wearebeyond.work/beyond-fox-court>

beyond is operated by [infiniSpace](#) and is part of its flexible workspaces portfolio