

66

SLATER STREET

Ottawa, Ontario

1,091 - 4,069 sq.ft.
Ground Floor Retail



CHRIS TURVILL
Leasing Manager, Sales Representative
Colonnade BridgePort Realty Inc., Brokerage

343.633.5088

FRASER PADDISON
Director, Retail Leasing, Broker
Colonnade BridgePort Realty Inc., Brokerage

343.633.5078

**COLONNADE
BRIDGEPORT**
Realty Inc., Brokerage

66 SLATER STREET

Ottawa, Ontario

LEASE DETAILS

Rental Rate: Please Contact
Taxes & Operating: \$18.25/sq.ft.

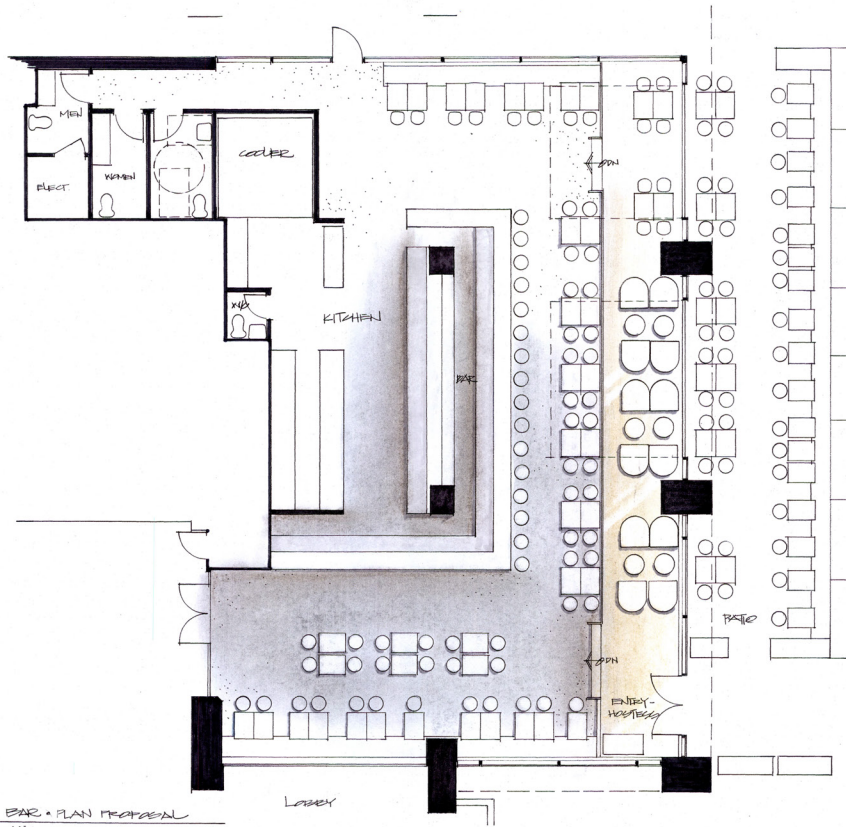
Operating costs, tax estimates and rental ranges are based on 2021 figures and are subject to change.

OPPORTUNITY

Suite 101 - 1,091 sq.ft.
Suite 102 - 4,069 sq.ft.
(can be demised)

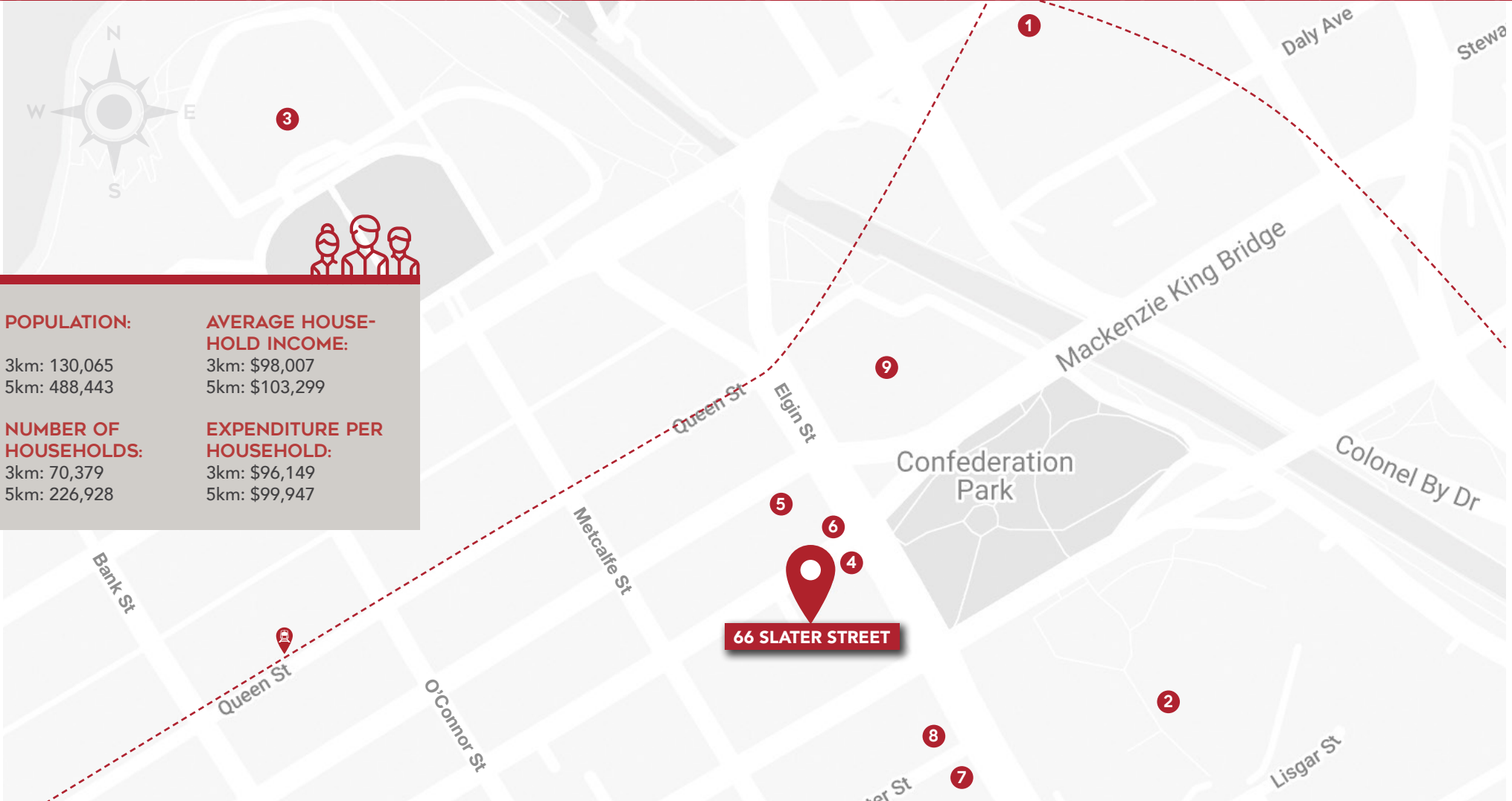
HIGHLIGHTS

- ✓ Located on the main downtown transitway corridor and steps from LRT station
- ✓
 - High profile corner of Elgin Street and Slater Street
 - On-site, underground parking available
 - Easily accessible from the Queensway
- ✓ Close to downtown amenities including Lord Elgin, BMO, Rideau Centre, NAC, and Elgin Street shops and amenities
- ✓ 66 Slater is 270,000 sq.ft. office tower home to SPACES, a 6-floor, 75,000 sq.ft. collaborative workspace
- ✓ Certified Wired Gold rated building
- ✓ The retail unit is ideal suited for a restaurant looking to do an a la carte breakfast, full lunch, dinner and after dinner menus



66 CAFE BAR - PLAN PROPOSAL
66 SLATER AVE

AREA MAP



POPULATION:

3km: 130,065
5km: 488,443

AVERAGE HOUSEHOLD INCOME:

3km: \$98,007
5km: \$103,299

NUMBER OF HOUSEHOLDS:

3km: 70,379
5km: 226,928

EXPENDITURE PER HOUSEHOLD:

3km: \$96,149
5km: \$99,947

66 SLATER STREET

- | | | | | | |
|---|------------------|---|-------------|---|----------------------|
| 1 | CF Rideau Centre | 4 | Grill 41 | 7 | Brown's Social House |
| 2 | Ottawa City Hall | 5 | Tim Hortons | 8 | Beckta Dining & Wine |
| 3 | Parliament Hill | 6 | Starbucks | 9 | National Arts Centre |

66 SLATER STREET
Ottawa, Ontario

66

SLATER STREET

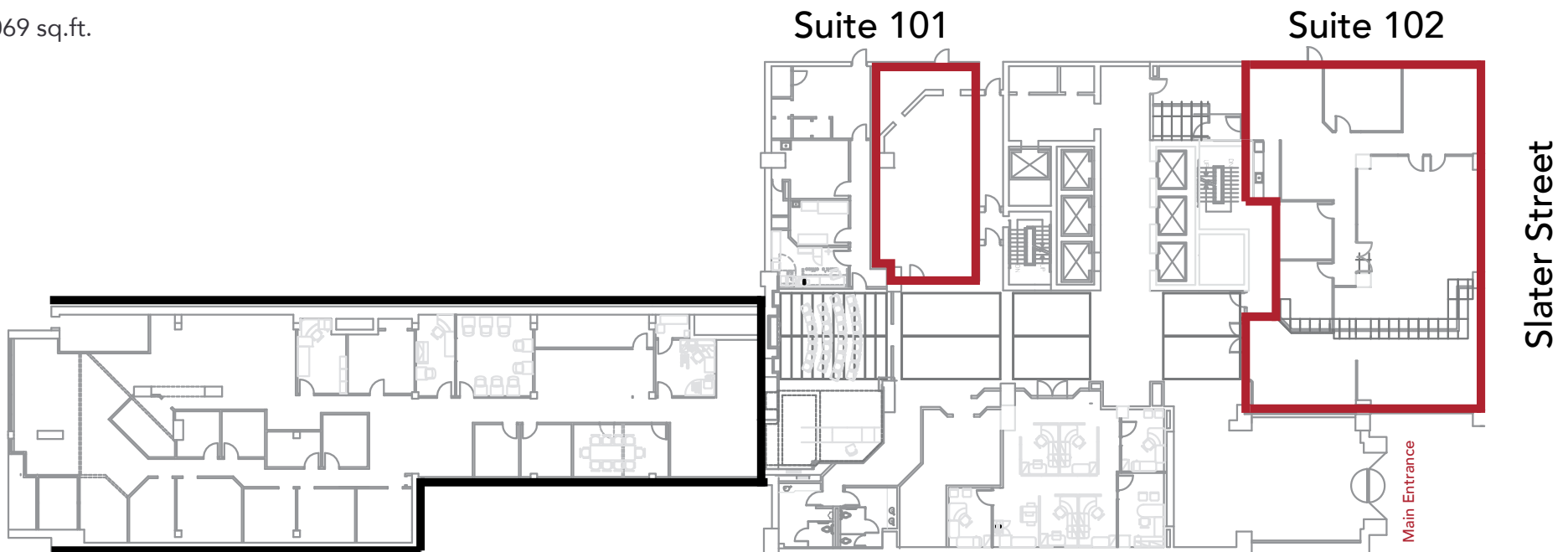
Ottawa, Ontario

SUITE 101

1,091 sq.ft.

SUITE 102

4,069 sq.ft.



◆ SPACES.

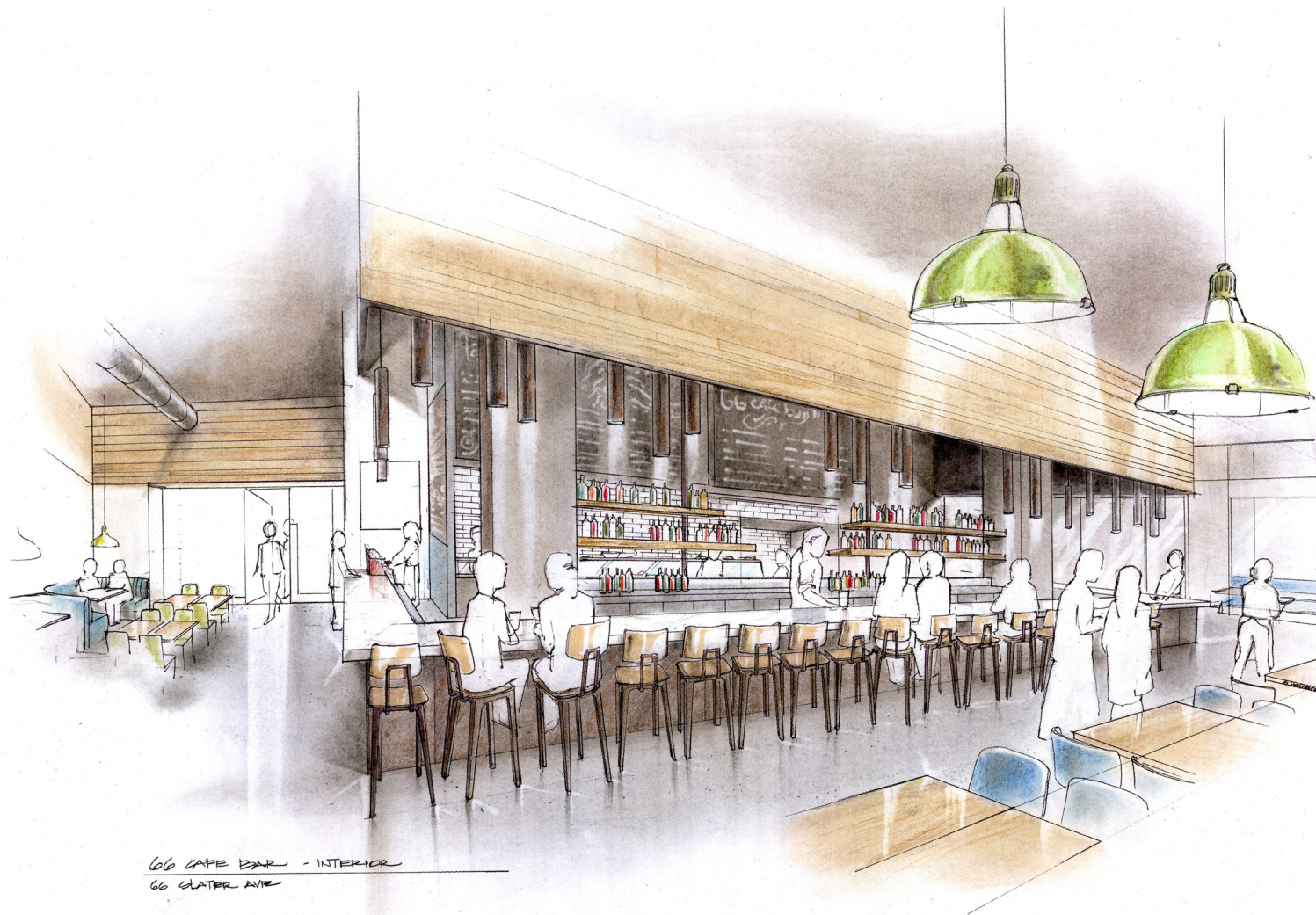
66

SLATER STREET

Ottawa, Ontario

GROUND FLOOR CONCEPT RENDERING

4,069 sq.ft.



66 CAFE BAR - INTERIOR
66 SLATER AVE