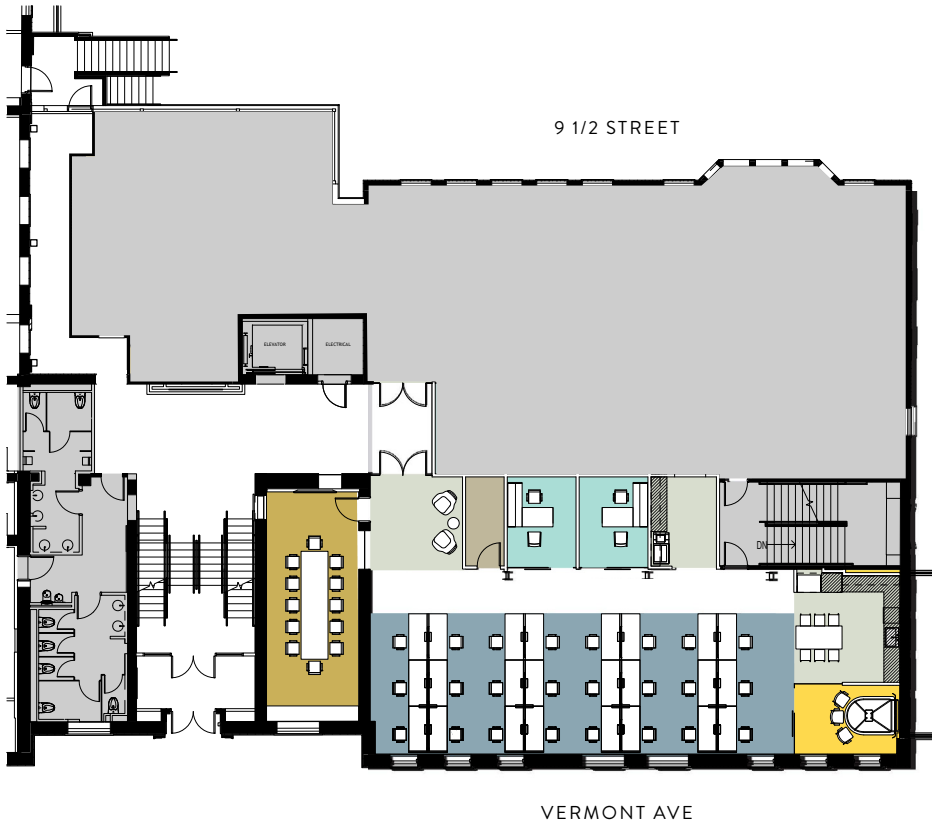


SUITE 101 / 3,301 SF

1923 VERMONT AVE NW

GRIMKE
School



PROGRAM SUMMARY -
COLOR LEGEND

- OFFICE
- WORKSTATION
- COLLABORATION
- CONFERENCE
- STORAGE
- SUPPORT

| SUITE 100A (3,301 SF) | PROVIDED |
|--------------------------|----------|
| OFFICE (1 HUDDLE/OFFICE) | 2/3 |
| BENCHING | 24 |
| CONFERENCE (12 PP) | 1 |
| RECEPTION | 1 |
| WORKROOM | 1 |
| LAN/STORAGE | 1 |
| OPEN CAFE | 1 |

JOHN KLINKE
202.595.1446
jklinke@streamrealty.com

TIM McCARTY
202-886-8827
tim.mccarty@streamrealty.com

STREAM

SUITE 300 / 7,124 SF

1923 VERMONT AVE NW

GRIMKE
School



- OFFICE
- WORKSTATION
- EXEC OFFICE
- COLLABORATION
- CONFERENCE
- STORAGE
- VIDEO CONFERENCE
- SUPPORT

| PROGRAM SUMMARY | PROVIDED |
|------------------------|----------|
| OFFICE | 4-7 |
| BENCHING | 20 |
| RECEPTION | 1 |
| LARGE CONFERENCE | 2 |
| VIDEO CONFERENCE | 3 |
| HUDDLE (OPEN) | 3 |
| LOUNGE AREAS | 4 |
| TOUCH DOWN | 1 |
| PANTRY | 1 |
| COPY/PRINT | 1 |
| STORAGE/LAN | 1 |
| COAT CLOSET | 1 |
| PHONE / WELLNESS | 2 |
| RECONFIGURED RESTROOMS | 2 |

SQUARE FOOTAGE
7,124 TOTAL RSF*

* RENTABLE SQUARE FOOTAGE IS APPROXIMATE AND SUBJECT TO CHANGE. FINAL RSF MUST BE VERIFIED BY LANDLORD.

JOHN KLINKE
202.595.1446
jklinke@streamrealty.com

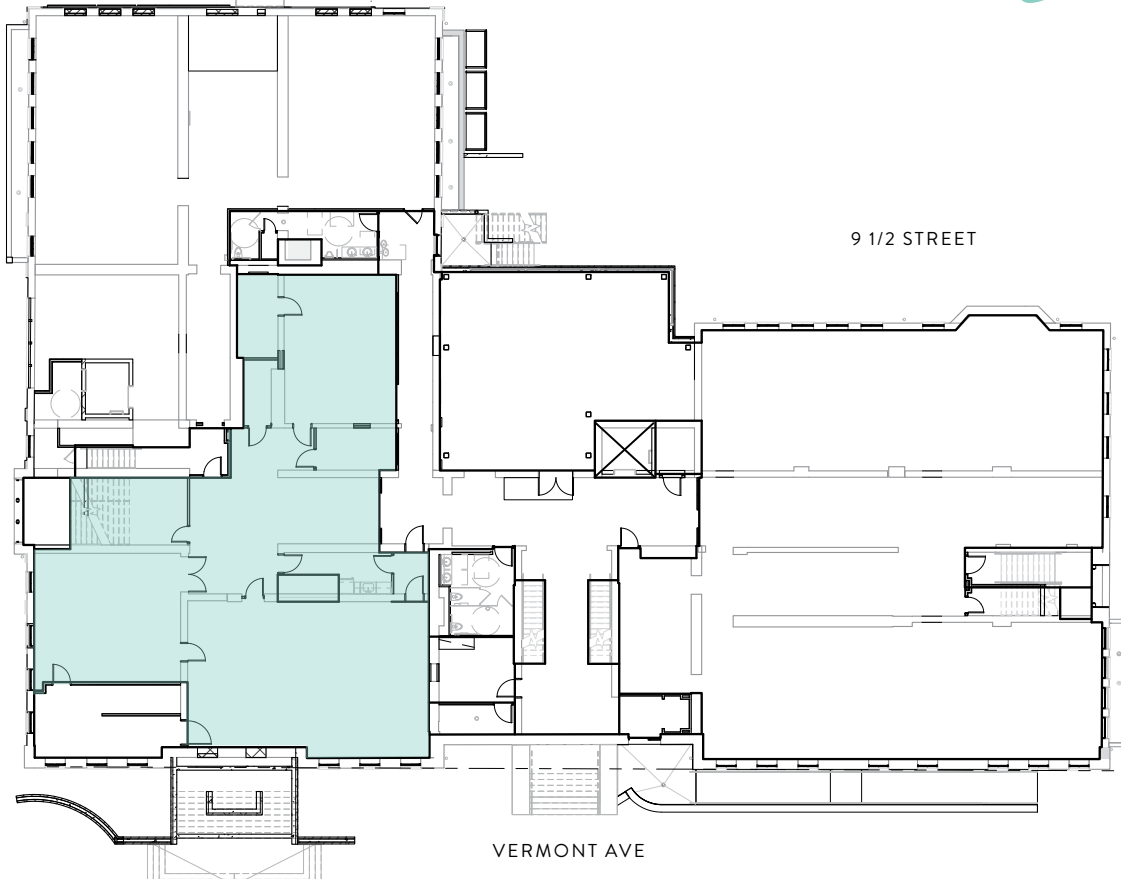
TIM McCARTY
202-886-8827
tim.mccarty@streamrealty.com

STREAM

SUITE 002 / 4,616 SF

1923 VERMONT AVE NW

GRIMKE
School



JOHN KLINKE
202.595.1446
jklinke@streamrealty.com

TIM McCARTY
202-886-8827
tim.mccarty@streamrealty.com

STREAM