

PROMO RATE

3 MONTHS OF FREE RENT
\$1.00 FSG FOR 1ST 6 MONTHS
\$2.50 FSG THEREAFTER

FOR SUBLEASE

±1,817 SF OFFICE SUITE AVAILABLE

27201

27201 PUERTA REAL, #140

MISSION VIEJO, CA 92691

LA LEE &
ASSOCIATES
COMMERCIAL REAL ESTATE SERVICES

OC
OFFICE GROUP

PROPERTY FEATURES

- ±1,817 SF OFFICE SUITE
- 3 PRIVATE OFFICES, CONFERENCE ROOM, BREAK ROOM, OPEN AREA
- FURNITURE AVAILABLE
- AMPLE STRUCTURED AND FREE SURFACE PARKING
- FITNESS FACILITY ON-SITE
- MINUTES FROM THE SHOPS AT MISSION VIEJO AND KALEIDOSCOPE
- DIRECT ACCESS TO THE 5 FREEWAY

AVAILABILITIES

- **ASKING RATE:** \$1.00/SF FSG FOR THE 1ST 6 MONTHS, \$2.50/SF FSG THEREAFTER
 - 3 MONTHS OF FREE RENT
- **SUBLEASE EXPIRATION:** SEPTEMBER 30, 2028



KYLEE KING
Vice President
Lic. #02101275
949.790.3108
kking@leeirvine.com



The information contained herein has been obtained from the property owner or other third party and is provided to you without verification as to accuracy. We (Lee & Associates, its brokers, employees, agents, principals, officers, directors and affiliates) make no warranty or representation regarding the information, property, or transaction. You and your attorneys, advisors and consultants should conduct your own investigation of the property and transaction.

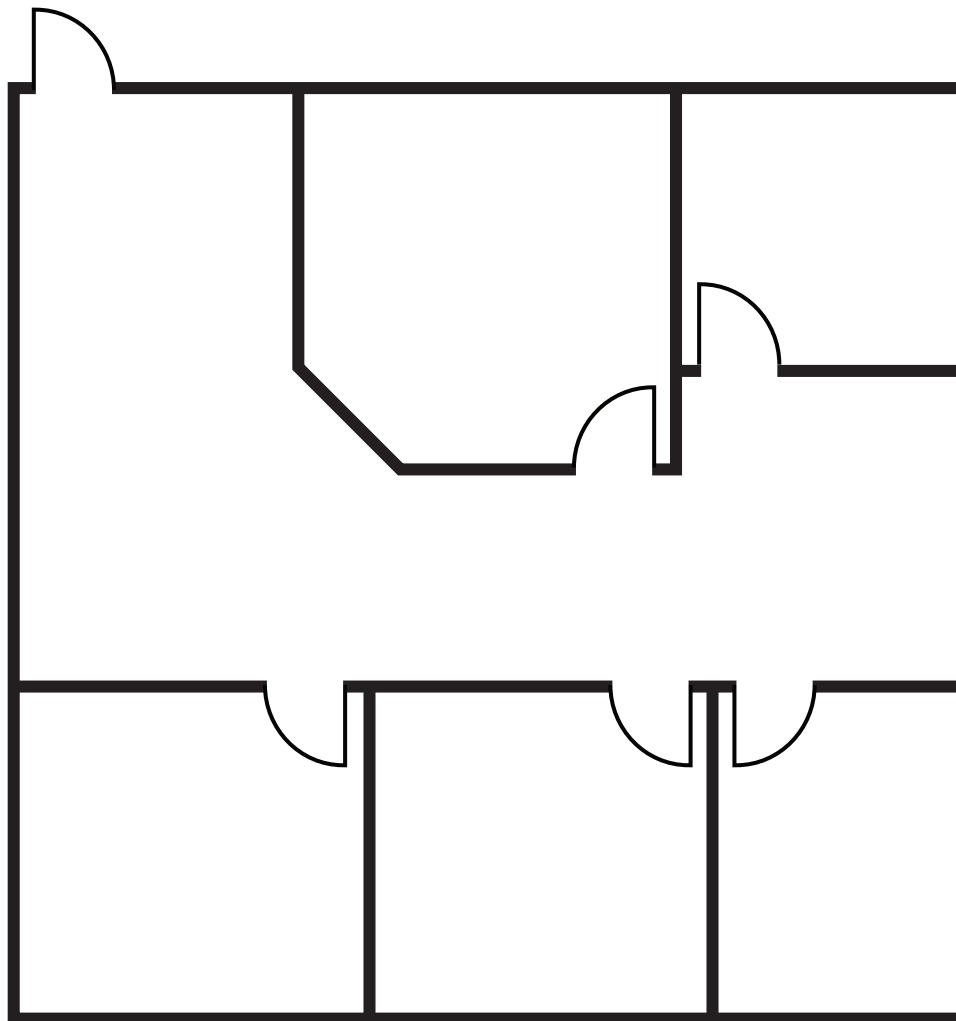


27201 PUERTA REAL, #140
MISSION VIEJO, CA 92691

27201 PURETA REAL, #140

MISSION VIEJO, CA 92691

FLOOR PLAN



SUITE 140

± 1,817 SF

27201 PURETA REAL, #140
MISSION VIEJO, CA 92691

NEARBY AMENITIES

